



# Pneumatic Shuttle Valve Fittings

## Shuttle Valves

These shuttle valves automatically select the higher of two inlet pressures and direct that flow to the outlet.

## Features

- Various porting options including push-to-connect fittings
- Space saving
- Long service life
- Low cracking pressure (less than 1 psi)
- Porting versatility - eliminates excess fitting requirements
- Made in USA



Part No. SV10N

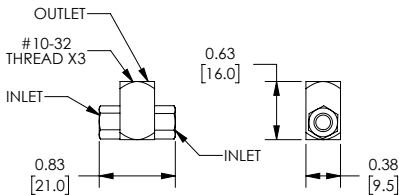
NITRA™ Pneumatic Union Check Valve Fittings				
Part No.	Price	Description	Parts Per Pkg	Weight (lbs)
SV10N	\$8.75	NITRA pneumatic threaded fitting, shuttle valve, nickel-plated brass body, nickel-plated brass threads, (3) #10-32 female threaded connection(s).	1	0.05
SV18N	\$9.50	NITRA pneumatic threaded fitting, shuttle valve, anodized aluminum body, nickel-plated brass threads, (3) 1/8in female NPT connection(s).	1	0.10
SV14	\$14.75	NITRA pneumatic threaded fitting, shuttle valve, anodized aluminum body, nickel-plated brass threads, (3) 1/4in push-to-connect tubing connection(s).	1	0.15

## Dimensions

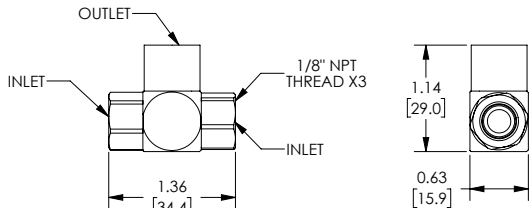
inches [mm]



Part No. SV18N



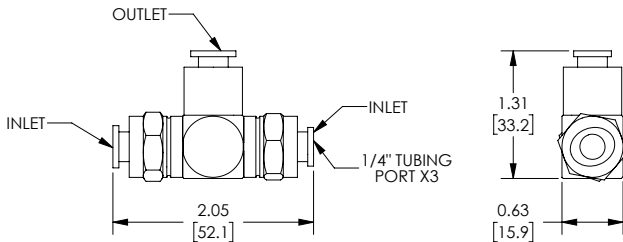
Part No. SV10N



Part No. SV18N



Part No. SV14



Part No. SV14

See our website [www.AutomationDirect.com](http://www.AutomationDirect.com) for complete Engineering drawings.