

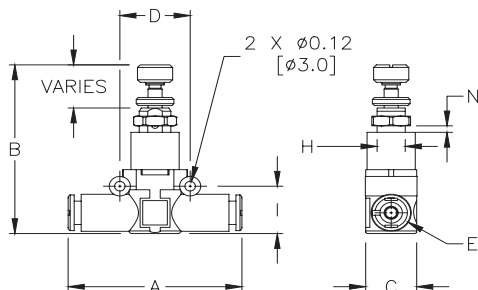


# Inline Pressure Regulators and Gauges

**NITRA** pneumatic push-to-connect miniature pressure regulators have a technopolymer body and nickel-plated brass internal parts. Downstream air pressure can be easily adjusted to a range of 15 to 120 psi with a built-in relief valve to exhaust over-pressure. These regulators can be installed in series or parallel with other special inline fittings.

## Features

- Works with flexible pneumatic tubing
- Easily added to existing circuits
- Ideal for use in secondary branches of a pneumatic system
- Use with PGU series pressure gauges for precise control
- Two-year warranty



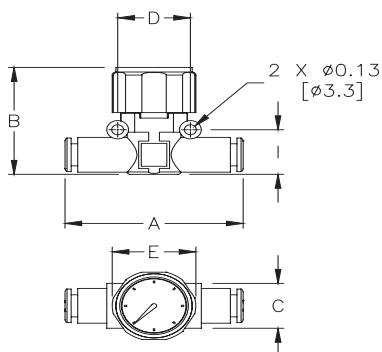
NITRA Inline Pressure Regulators														
Inch Sizes - dimensions in inches (in.)														
Part No.	Price	Tube Size	Ø	A	B	C	D	E	H	I	N	Inlet Pressure Range (psi)	Flow Rate (scfm)*	Package Weight (lbs)
<b>PRU14</b>	\$25.00	1/4 in. x 1/4 in.	1/4	1.85	1.81-2.05	0.58	0.79	0.45	M9x0.75	0.57	0.18	29-145	5.3	0.1
<b>PRU516</b>	\$26.50	5/16 in. [8mm] x 5/16 in. [8mm]	5/16	2.18	2.05-2.28	0.74	0.94	0.54	M11x1	0.74	0.15	29-145	9.2	0.1

\*Flow conditions: 90psi inlet pressure, 14.5 psi ΔP

**NITRA** pneumatic push-to-connect in-line pressure gauges have a technopolymer body and metal gauge casing. They install easily anywhere in a pneumatic circuit and have a range of 0 to 170 psi.

## Features

- Works with flexible pneumatic tubing
- Easily added to existing circuits



NITRA Inline Pressure Gauges											
Inch Sizes - dimensions in inches (in.)											
Part No.	Price	Tube Size	Ø	A	B	C	D	E	I	Max Pressure (psi)	Package Weight (lbs)
<b>PGU14</b>	\$22.00	1/4 in. x 1/4 in.	1/4	1.85	1.38	0.58	0.79	0.45	0.57	174	0.1
<b>PGU516</b>	\$23.50	5/16 in. [8mm] x 5/16 in. [8mm]	5/16	2.18	1.61	0.74	0.94	0.54	0.74	174	0.1

See our website [www.AutomationDirect.com](http://www.AutomationDirect.com) for complete Engineering drawings.



# Special Purpose Push-to-Connect Pneumatic Fittings

**NITRA** pneumatic inline fittings are special purpose products mounted inline with pneumatic circuits. With these small, highly efficient components it is possible to perform many pneumatic functions at any point in a circuit.

- Ultra-modular
- Components can be connected in parallel
- Push-to-Connect: No tools required!
- Made of lightweight technopolymer
- Stem adapters connect push-to-connect fittings to NPT ports



*(Fasteners shown not included)*



***Inline Pressure Regulators  
from \$20.25***



***Inline Pressure Gauges  
from \$17.75***



***Inline Pressure Indicators  
from \$11.75***



***Inline Manual Shutoff Valves  
from \$11.25***



***Inline Quick Exhaust Valves  
from \$8.75***



***Stem Adapters  
from \$3.25***