



# Inline Manual Shutoff Valves - 2-Way/ 3-Way Locking/Non-Locking



Non-Locking Valve

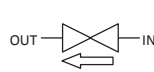
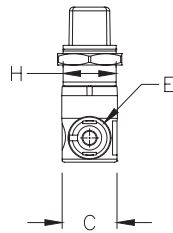
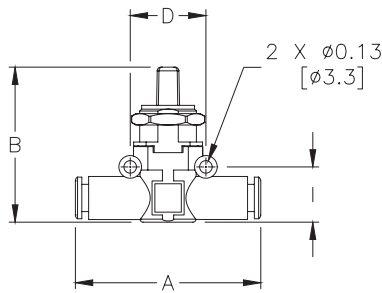
Locking Valve



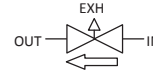
NITRA pneumatic push-to-connect in-line hand valves have a technopolymer body and nickel-plated brass valve insert, with a range of 0 to 150 psi. Both 2-way and 3-way valves are available with or without locking capability. 3-way valves relieve pressure downstream when in the closed position.

## Features

- Works with flexible pneumatic tubing
- Easily added to existing circuits
- 2-way and 3-way valves available
- Lockable valves keep valve in closed position during maintenance (Note: Valve can only be locked in closed position)
- Two-year warranty



2-Way Valve



3-Way Valve

NITRA® Inline Manual Shutoff Valves													
Inch Sizes - dimensions in inches (in.)													
Part No.	Price	Tube Size	Position	A	B	C	D	E	H	I	Max Pressure (psi)	Flow Rate (scfm)*	Package Weight (lbs)
HVU14-2	\$12.50	1/4 in. x 1/4 in.	2-way (non-locking)	1.85	1.61	0.58	0.79	0.45	M15x1	0.55	145	9.9	0.1
HVU14-3	\$12.50	1/4 in. x 1/4 in.	3-way (non-locking)										0.1
HVU516-2	\$14.00	5/16 in. [8mm] x 5/16 in. [8mm]	2-way (non-locking)	2.18	1.81	0.74	0.94	0.54	M15x1	0.59	145	16.6	0.1
HVU516-3	\$14.00	5/16 in. [8mm] x 5/16 in. [8mm]	3-way (non-locking)										0.1
HVU14-2L	\$21.00	1/4 in. x 1/4 in.	2-way (locking)	1.85	1.61	0.58	0.79	0.45	M15x1	0.55	145	9.9	0.1
HVU14-3L	\$27.50	1/4 in. x 1/4 in.	3-way (locking)										0.1
HVU516-2L	\$22.50	5/16 in. [8mm] x 5/16 in. [8mm]	2-way (locking)	2.18	1.81	0.74	0.94	0.54	M15x1	0.59	145	16.6	0.2
HVU516-3L	\$22.00	5/16 in. [8mm] x 5/16 in. [8mm]	3-way (locking)										0.2

\*Flow conditions: 90psi inlet pressure, 14.5 psi ΔP

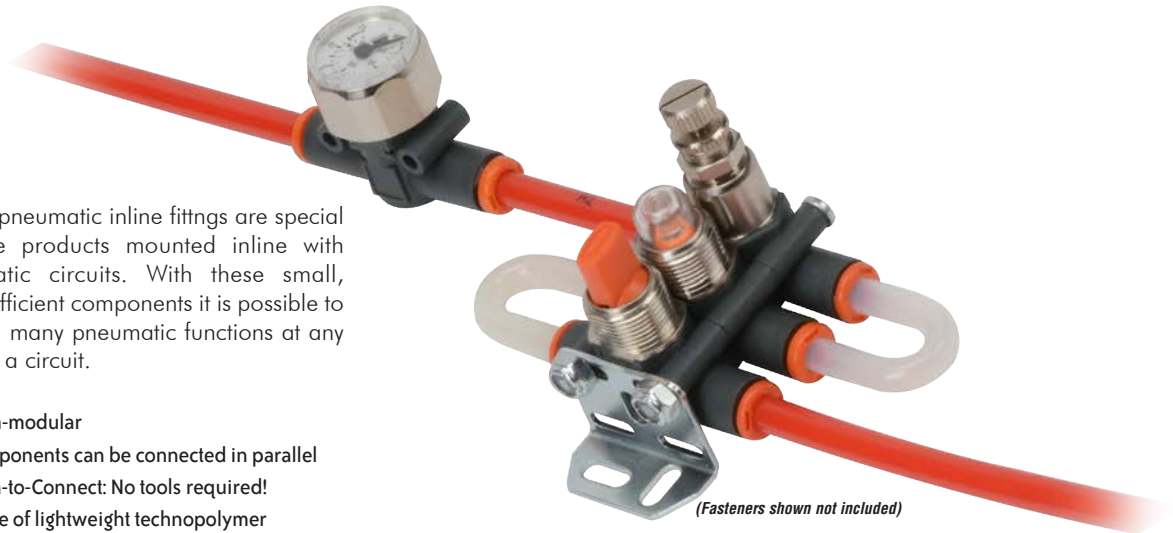
See our website [www.AutomationDirect.com](http://www.AutomationDirect.com) for complete Engineering drawings.



# Special Purpose Push-to-Connect Pneumatic Fittings

NITRA pneumatic inline fittings are special purpose products mounted inline with pneumatic circuits. With these small, highly efficient components it is possible to perform many pneumatic functions at any point in a circuit.

- Ultra-modular
- Components can be connected in parallel
- Push-to-Connect: No tools required!
- Made of lightweight technopolymer
- Stem adapters connect push-to-connect fittings to NPT ports



**INLINE PRESSURE REGULATORS**  
from \$20.25



**INLINE PRESSURE GAUGES**  
from \$17.75



**INLINE PRESSURE INDICATORS**  
from \$11.75



**INLINE MANUAL SHUTOFF VALVES**  
from \$11.25



**INLINE QUICK EXHAUST VALVES**  
from \$8.75



**STEM ADAPTERS**  
from \$3.25