

# D-Series Heavy Duty Pneumatic Cylinders – 2-1/2 inch Bore

## 2-1/2 in. Bore, Double-acting, Tapped End Caps, Magnetic Piston



NITRA heavy duty pneumatic, NFPA interchangeable cylinder, 2-1/2 inch bore, 5/8" diameter piston rod, 1/4" female NPT ports, double acting, tapped end caps and one side for mount, flange, pivot and clevis mount options available. Some models available with cushions on both ends.

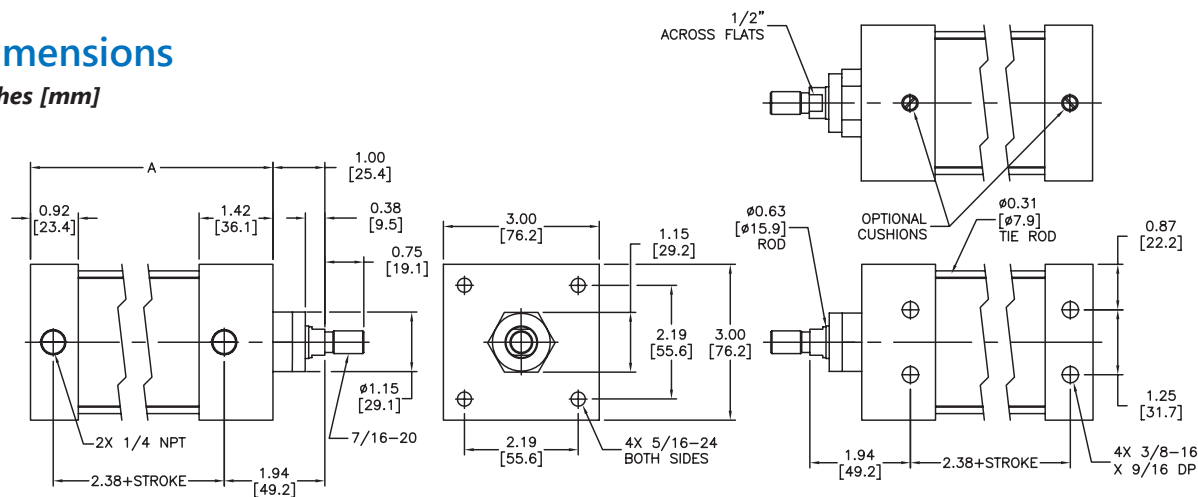
2-1/2 in bore, double acting, tapped end caps						
Part Number no Cushions	Price	Part Number w/ Cushions*	Price	Stroke Length (in)	"A" (in [mm])	Weight (lb)
–		<u><b>D40020DT-MC</b></u>	Retired	2	5.75 [146.0]	3.7
<u><b>D40160DT-M</b></u>	Retired	–		16	19.75 [501.6]	7.3

\* The cushions decelerate the piston rod over the last 11/16 inch (approx.) of stroke and are adjustable. Cushioned cylinders have an adjustable orifice and pre-lubricated nitrile cushion seal.

Specifications	
Aluminum hard anodized to 60 Rc cylinder body	4.91 sq. in. piston area
Solid aluminum bar, black anodized end caps	Pressure rating 250 psi, AIR ONLY
High tensile ground and polished hard chrome plated steel piston rod	Non-detergent petroleum based oil is recommended
Low friction Buna-N seals	Temperature range -40°F to 250°F (-40 to 121°C)
Extend force at 100 psi = 491 lb.	Retract force at 100 psi = 460 lb.
Filtration: Not essential, however a standard 40 micron filter placed upstream will prolong seal life.	

Mounting Accessories		
Style	NFPA Designation	Part No.
Front Flange	MF1	<u>DFM-3</u>
Rear Flange	MF2	<u>DFM-3</u>

## Dimensions

**inches [mm]**



# D-Series Heavy Duty Pneumatic Cylinders

## Nitra Heavy Duty Pneumatic Air Cylinders

The NITRA Pneumatics D-Series heavy duty cylinders include bore sizes from 1-1/2" to 4" and stroke lengths from 1" to 24" to meet a broad range of applications where abusive conditions exist. These heavy duty cylinders are constructed with high quality aluminum components and a magnetic piston fitted with a PTFE wear band.

The cylinders are fitted with a Teflon® impregnated and hardcoat anodized heavy-duty external rod bearing. This bearing ensures smooth rod motion while maintaining rod rigidity and stability.

All D-Series cylinders have a magnetic piston that can be used along with solid state or reed switches for rod position sensing. The solid state and reed switches sense the rod position by emitting an electrical signal when the magnetized piston reaches a point adjacent to their location. Tie rod mounting allows fast and accurate positioning setup.

Cushioned cylinders are also available to provide end-of-

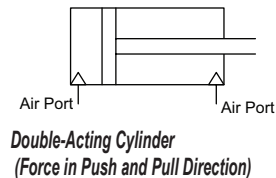
stroke deceleration at both ends. The cushions decelerate the piston rod at the end-of-stroke and are adjustable with a flat head screwdriver.

### Features

- Interchangeable with other popular brands of NFPA cylinders
- Available bore sizes: 1-1/2", 2", 2-1/2", 3-1/4", 4"
- Wide selection of stroke lengths
- All models are double-acting
- Head and tail caps drilled for mounting
- All models have a magnetic piston
- Teflon® impregnated and hardcoat anodized heavy-duty external rod bearing
- 250 psi max operating pressure
- Some models available with adjustable cushions (both ends)
- Made in the USA
- All models are typically available for same-day shipment

## Operation

Double-acting cylinders have two compressed air ports. One of the ports will extend the rod in the "push" direction and the other port will retract the rod in the "pull" direction.



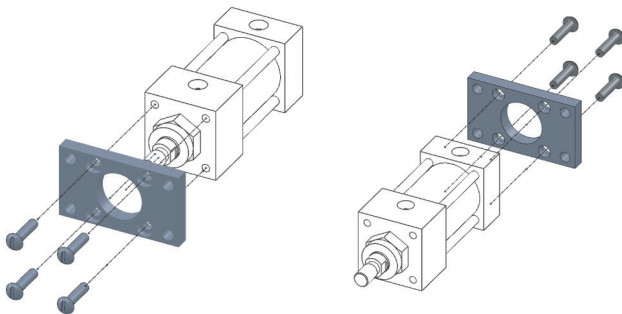
## Mounting Options

### Flange Mounted:

The cylinder has holes on the ends of the end caps that allow easy mounting to a plate or other surfaces. See Flange Mount Kits in Accessories section.

Front Flange Mount (MF1)

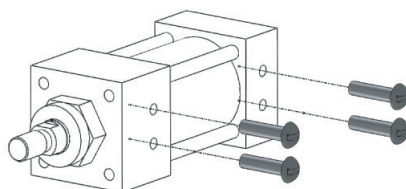
Rear Flange Mount (MF2)



### Side Mounted:

The cylinder has holes on the sides of the end caps that allow easy mounting to a surface. No mounting kit needed, only bolts.

Side Tap Mount (MS4)

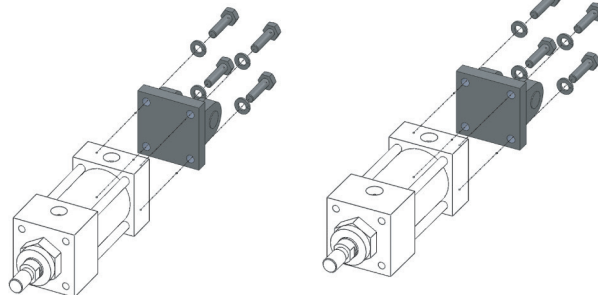


### Rear Clevis and Rear Pivot Mount:

Clevis and Pivot mounts use a bracket that allows a pivoted mount. See Rear Clevis and Pivot Attachments in Accessories section.

Rear Clevis Mount (MP2)

Rear Pivot Mount (MP4)

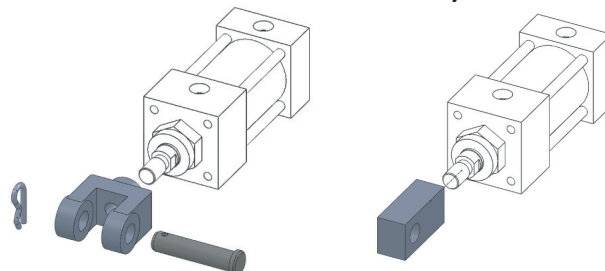


### Rod Clevis:

The Rod Clevis uses a rod-mounted bracket and pin that allows a pivoted mount. Rod Eye uses a rod-mounted block with eye that allows a pivoted mount. See Accessories Section.

Rod Clevis

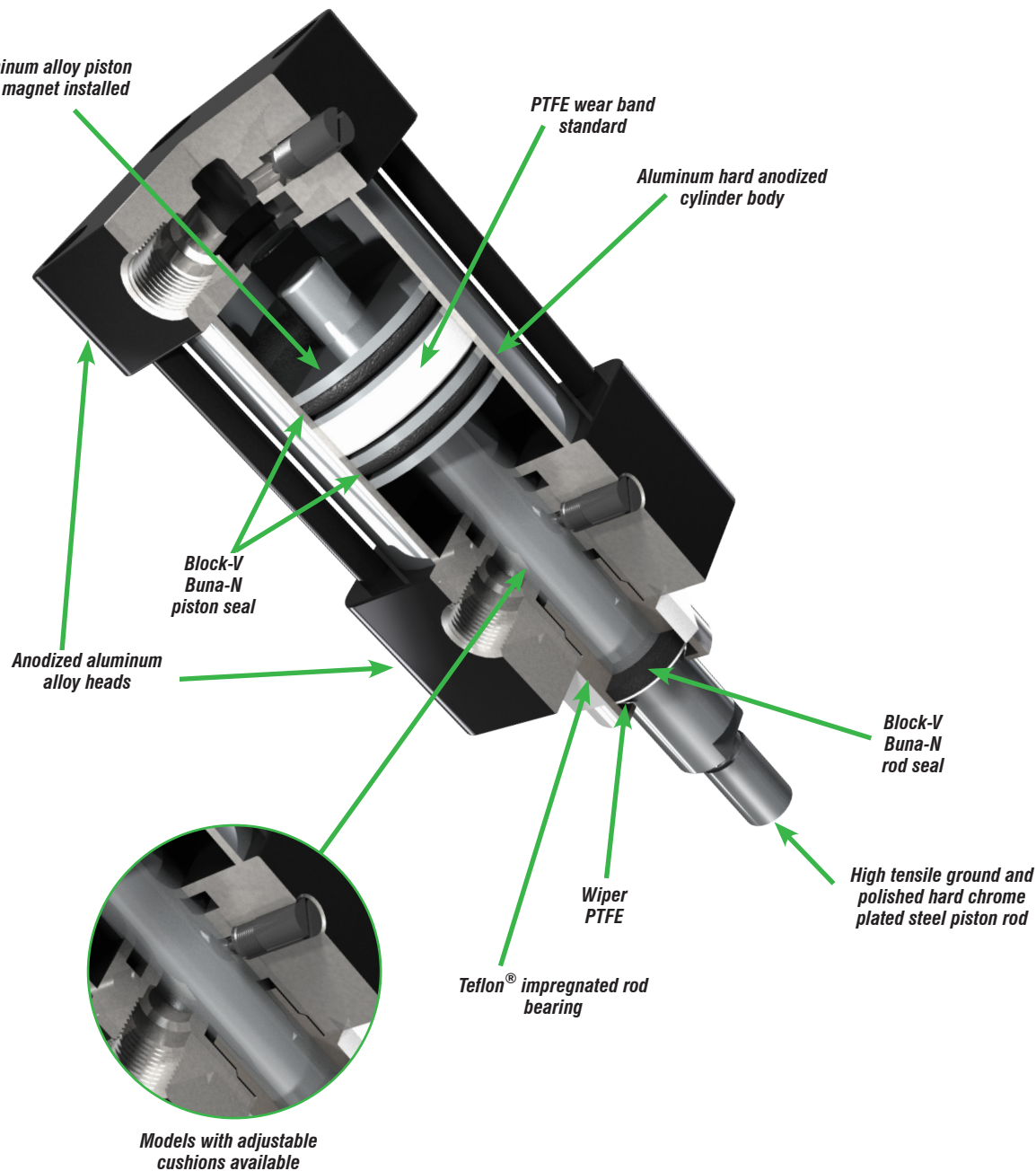
Rod Eye





# D-Series Heavy Duty Pneumatic Cylinders

## Cylinder Features





# D-Series Heavy Duty Pneumatic Cylinders – Accessories

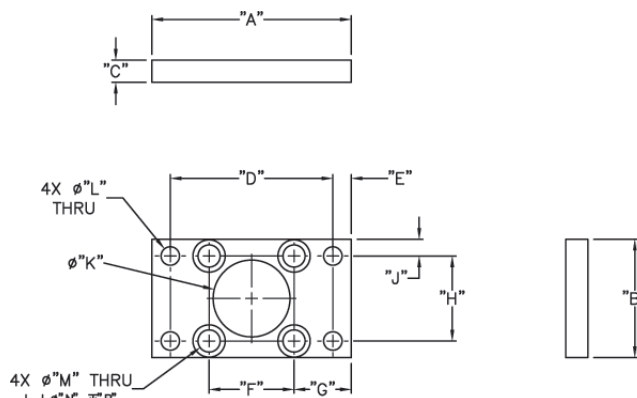
D-Series Heavy Duty Pneumatic Cylinder Accessories				
<i>Part Number</i>	<i>Description</i>	<i>Pcs/Pkg</i>	<i>Wt (lb)</i>	<i>Price</i>
<b><u>DFM-3</u></b>	NFPA style MF1 or MF2 cylinder flange mounting plate and attaching hardware, for 2-1/2 inch bore NITRA NFPA D-series pneumatic cylinders	1	0.5	Retired



# D-Series Heavy Duty Pneumatic Cylinders – Accessories

## Flange Attachment Dimensions

inches [mm]



**Flange Attachment Dimension Table**

Part #	A	B	C	D	E	F	G	H	J	(Dia) K	(Dia) L	(Dia) M	(Dia) N	P
<b>DFM-3</b>	4.63 [117.6]	3.00 [76.2]	0.38 [9.7]	3.88 [98.6]	0.38 [9.7]	2.19 [55.6]	1.22 [31.0]	2.19 [55.6]	0.41 [10.4]	ø1.74 [ø44.2]	ø0.38 [ø9.7]	ø0.38 [ø9.7]	ø0.66 [ø16.8]	0.16 [4.1]



# CPS Series Cylinder Position Switches

## Position Switch Cross Reference Chart

NITRA Switch Type	Cylinder Brand (may fit some of these cylinders)	Photo Example	Groove Illustration	
<b>CPS</b> <b>CPSF</b>	NITRA A-Series, D-Series, F-Series			
<b>CPS9C</b>	DE-STA-CO Robohand SMC Compact Air			
<b>CPS9D</b>	Fabco Numatics Rotomation			
<b>CPS9F</b>	NITRA G-Series Fabco Festo Numatics Rotomation			
<b>CPS9H</b>	NITRA E-Series NITRA H-Series			
<b>CPS9M</b>	Norgren			
<b>CPS9Q</b>	NITRA G-Series Parker			
<b>CPS9T</b>	SMC			