



Pneumatic Gripper - Parallel (End Mount Grip)

Single Acting - Normally Open



KP06MSA-MB

NITRA Pneumatics grippers are an excellent choice for many automation applications. They are available in both parallel and angular travels in seven different body sizes. Grippers are either double acting, single acting normally closed or single acting normally open. Anodized aluminum bodies include integral mounting slots for position switches.

Features

- Seven sizes available (6 to 40mm bore)
- Double acting or single acting N.O. or N.C.
- Anodized aluminum bodies
- Position switch ready with integral mounting slots



NITRA Pneumatic Gripper - Parallel (End Mount Grip) - Single Acting Normally Open										
Part No.	Description	Style	Action	Size - Bore (mm)	Stroke (mm)	Grip	Body	Port(s)	Price	Weight (lbs)
<u>KP06MSA-MB</u>	NITRA pneumatic gripper	Parallel	Single acting, normally open	6	4	End Mount	Anodized aluminum	M3 x 0.5	\$231.00	0.1
<u>KP10MSA-MB</u>				10					\$249.00	0.2
<u>KP16MSA-MB</u>				16	6			M5 x 0.8	\$255.00	0.3
<u>KP20MSA-MB</u>				20	10				\$362.00	0.5
<u>KP25MSA-MB</u>				25	14				\$432.00	1.0
<u>KP32MSA-MB</u>				32	22				\$652.00	1.9
<u>KP40MSA-MB</u>				40	30				\$746.00	3.1

NITRA Pneumatic Gripper Specifications		
Fluid		Air (clean/dry)
Pressure Range	6mm, 10mm	50 to 101 psig (3.45 to 6.96 bar)
	16mm to 40mm	36 to 101 psig (2.48 to 6.96 bar)
Proof Pressure		175 psig
Temperature Range		-4°F to 160°F (0°C to 60°C)
Lubrication		Not required
Repeatability	6mm to 25mm	± 0.01 mm
	32mm to 40mm	± 0.02 mm
Max Frequency	6mm to 25mm	180 cycles/min
	32mm to 40mm	60 cycles/min
Port Size		M3 x 0.5 (6 to 10mm units) M5 x 0.8 (16 to 40mm units)
Sensor Switch Compatibility		Nitra CPS9H-xx-x or CPS9C-xx-x
Includes		Magnet
Approvals		None



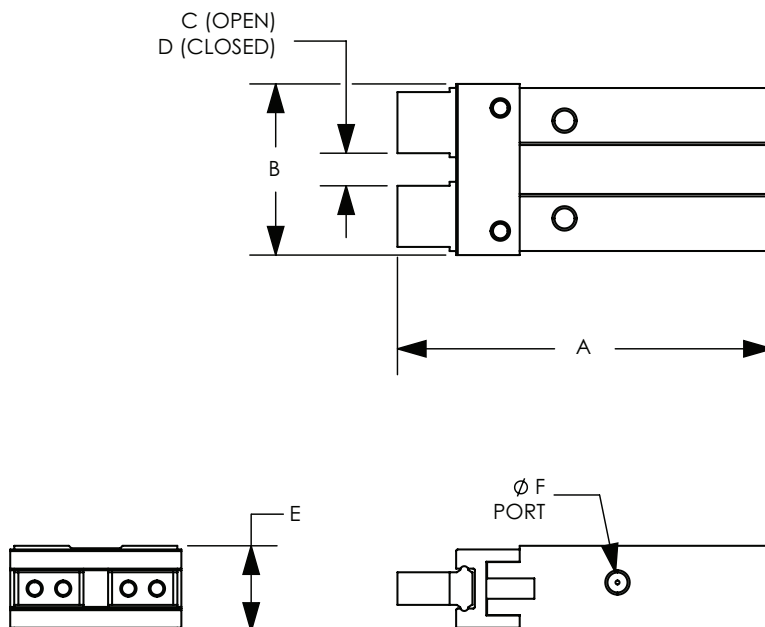
Click the above icon or scan the QR code to be taken to www.automationdirect.com/selectors/p_pneumaticgripper for our online Gripper Configuration Tool for further selection assistance.



Pneumatic Gripper - Parallel (End Mount Grip)

Dimensions

mm [inches]



Pneumatic Gripper Dimensions						
Part #	A	B	C	D	E	ØF
KP06MSA-MB	46.0 [1.81]	21.0 [0.83]	4.0 [0.16]	1.5 [0.06]	10.5 [0.41]	M3 x 0.5
KP10MSA-MB	48.7 [1.92]	30.0 [1.18]	5.5 [0.22]	1.5 [0.06]	16.5 [0.65]	M3 x 0.5
KP16MSA-MB	58.3 [2.30]	39.0 [1.54]	7.5 [0.30]	1.5 [0.06]	23.5 [0.93]	M5 x 0.8
KP20MSA-MB	73.0 [2.87]	53.0 [2.09]	11.5 [0.45]	1.5 [0.06]	27.5 [1.08]	M5 x 0.8
KP25MSA-MB	88.1 [3.47]	71.0 [2.80]	16.0 [0.63]	2.0 [0.08]	33.5 [1.32]	M5 x 0.8
KP32MSA-MB	106.0 [4.17]	106.0 [4.17]	25.0 [0.98]	3.0 [0.12]	40.0 [1.57]	M5 x 0.8
KP40MSA-MB	133.0 [5.24]	132.0 [5.20]	33.0 [1.30]	3.0 [0.12]	48.0 [1.89]	M5 x 0.8

See our website www.AutomationDirect.com for complete Engineering drawings.