



Pneumatic Gripper - Parallel (End Mount Grip)

Double Acting



KP06MD-MB

NITRA Pneumatics grippers are an excellent choice for many automation applications. They are available in both parallel and angular travels in seven different body sizes. Grippers are either double acting, single acting normally closed or single acting normally open. Anodized aluminum bodies include integral mounting slots for position switches.

Features

- Seven sizes available (6 to 40mm bore)
- Double acting or single acting N.O. or N.C.
- Anodized aluminum bodies
- Position switch ready with integral mounting slots



NITRA Pneumatic Gripper - Parallel (End Mount Grip) - Double Acting										
Part No.	Description	Style	Action	Size - Bore (mm)	Stroke (mm)	Grip	Body	Port(s)	Price	Weight (lbs)
KP06MD-MB	NITRA pneumatic gripper	Parallel	Double acting	6	4	End mount	Anodized aluminum	M3 x 0.5	\$130.00	0.1
KP10MD-MB				10					\$140.00	0.2
KP16MD-MB				16	6			M5 x 0.8	\$144.00	0.3
KP20MD-MB				20	10				\$204.00	0.5
KP25MD-MB				25	14				\$244.00	1.0
KP32MD-MB				32	22				\$367.00	1.9
KP40MD-MB				40	30				\$420.00	3.1

NITRA Pneumatic Gripper Specifications		
Fluid	Air (clean/dry)	
Pressure Range	6mm, 10mm	29 to 101 psig (1.99 to 6.97 bar)
	16mm to 40mm	22 to 101 psig (1.52 to 6.97 bar)
Proof Pressure	175 psig	
Temperature Range	-4°F to 160°F (-20°C to 60°C)	
Lubrication	Not required	
Repeatability	6mm to 25mm	± 0.01 mm
	32mm to 40mm	± 0.02 mm
Max Frequency	6mm to 25mm	180 cycles/min
	32mm to 40mm	60 cycles/min
Port Size	M3 x 0.5 (6 to 10mm units) M5 x 0.8 (16 to 40mm units)	
Sensor Switch Compatibility	Nitra CPS9H-xx-x or CPS9C-xx-x	
Includes	Magnet	
Approvals	None	



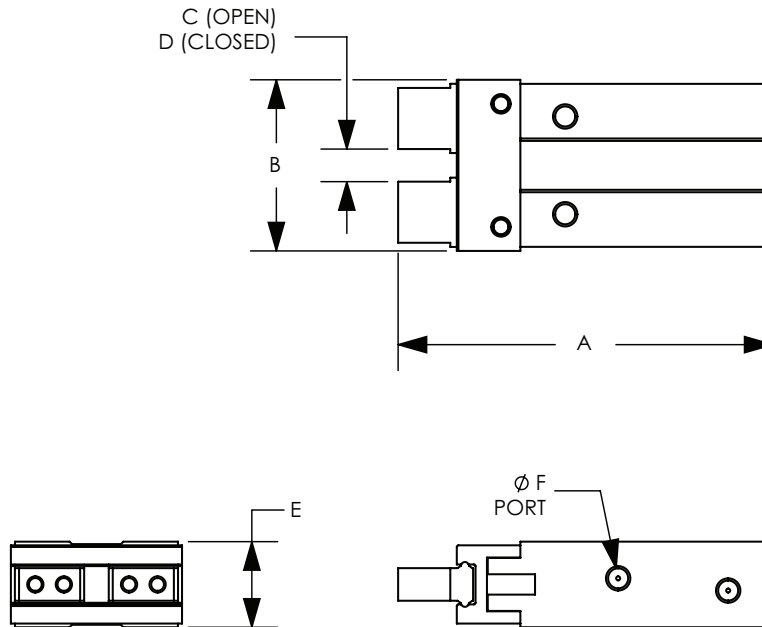
Click the above icon or scan the QR code to be taken to www.automationdirect.com/selectors/pneumaticgripper for our online Gripper Configuration Tool for further selection assistance.



Pneumatic Gripper - Parallel (End Mount Grip)

Dimensions

mm [inches]



Pneumatic Gripper Dimensions						
Part #	A	B	C	D	E	ØF
KP06MD-MB	46.0 [1.81]	21.0 [0.83]	4.0 [0.16]	1.5 [0.06]	10.5 [0.41]	M3 x 0.5
KP10MD-MB	48.7 [1.92]	30.0 [1.18]	5.5 [0.22]	1.5 [0.06]	16.5 [0.65]	M3 x 0.5
KP16MD-MB	58.3 [2.30]	39.0 [1.54]	7.5 [0.30]	1.5 [0.06]	23.5 [0.93]	M5 x 0.8
KP20MD-MB	73.0 [2.87]	53.0 [2.09]	11.5 [0.45]	1.5 [0.06]	27.5 [1.08]	M5 x 0.8
KP25MD-MB	88.1 [3.47]	71.0 [2.80]	16.0 [0.63]	2.0 [0.08]	33.5 [1.32]	M5 x 0.8
KP32MD-MB	106.0 [4.17]	106.0 [4.17]	25.0 [0.98]	3.0 [0.12]	40.0 [1.57]	M5 x 0.8
KP40MD-MB	133.0 [5.24]	132.0 [5.20]	33.0 [1.30]	3.0 [0.12]	48.0 [1.89]	M5 x 0.8

See our website www.AutomationDirect.com for complete Engineering drawings.