



# Pneumatic Gripper - Angular (Side Mount Grip)

## Single Acting - Normally Open



KA06MSA-M

NITRA Pneumatics grippers are an excellent choice for many automation applications. They are available in both parallel and angular travels in seven different body sizes. Grippers are either double acting, single acting normally closed or single acting normally open. Anodized aluminum bodies include integral mounting slots for position switches.

### Features

- Six sizes available (6 to 32mm bore)
- Double acting or single acting N.O.
- Anodized aluminum bodies
- Position switch ready with integral mounting slots



NITRA Pneumatic Gripper - Angular - Normally Open										
Part No.	Description	Style	Action	Size - Bore (mm)	Position	Grip	Body	Port(s)	Price	Weight (lbs)
KA06MSA-M	NITRA pneumatic gripper	Angular	Single acting, normally open	6	30 degrees open, -10 degrees closed	Side mount grip	Anodized aluminum	M3 x 0.5	\$67.00	0.1
KA10MSA-M				10					\$94.00	0.2
KA16MSA-M				M5 x 0.8				16	\$97.00	0.3
KA20MSA-M								20	\$117.00	0.5
KA25MSA-M								25	\$130.00	1.0
KA32MSA-M								32	\$144.00	1.9

NITRA Pneumatic Gripper Specifications		
<b>Fluid</b>	Air (clean/dry)	
<b>Pressure Range</b>	6mm	45 to 101 psig (3.10 to 6.97 bar)
	10mm to 32mm	36 to 101 psig (2.48 to 6.97 bar)
<b>Proof Pressure</b>	175 psig	
<b>Temperature Range</b>	-4°F to 160°F (-20°C to 60°C)	
<b>Lubrication</b>	Cylinder: not required - Jaws: grease regularly	
<b>Cushion Type</b>	Bumper	
<b>Integrated Flow Control</b>	6mm	N/A
	10mm to 32mm	Standard - flow control in closing direction
<b>Maximum Frequency</b>	180 cycles/min	
<b>Port Size</b>	M3 x 0.5 (6mm to 10mm units) M5 x 0.8 (16mm to 32mm units)	
<b>Sensor Switch Compatibility</b>	Nitra CPS9H-xx-x or CPS9C-xx-x	
<b>Includes</b>	Magnet	
<b>Approvals</b>	None	



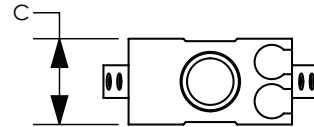
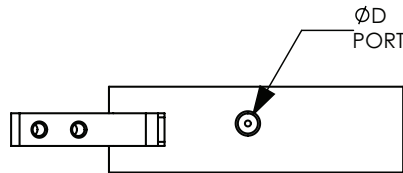
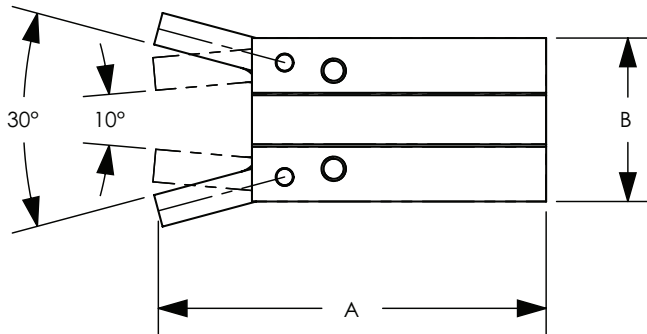
See [www.automationdirect.com](http://www.automationdirect.com) for our online Configuration Tool for further selection assistance.



# Pneumatic Gripper - Angular (Side Mount Grip)

## Dimensions

mm [inches]



Pneumatic Gripper Dimensions				
Part #	A	B	C	ØD
<b>KA06MSA-M</b>	47.5 [1.87]	20.0 [0.79]	10.5 [0.41]	M3 x 0.5
<b>KA10MSA-M</b>	52.5 [2.07]	23.0 [0.91]	16.5 [0.65]	M3 x 0.5
<b>KA16MSA-M</b>	62.5 [2.46]	30.5 [1.20]	23.5 [0.93]	M5 x 0.8
<b>KA20MSA-M</b>	78.0 [3.07]	42.0 [1.65]	27.5 [1.08]	M5 x 0.8
<b>KA25MSA-M</b>	92.0 [3.62]	52.0 [2.05]	33.5 [1.32]	M5 x 0.8
<b>KA32MSA-M</b>	96.5 [3.80]	60.0 [2.36]	40.0 [1.57]	M5 x 0.8

See our website [www.AutomationDirect.com](http://www.AutomationDirect.com) for complete Engineering drawings.