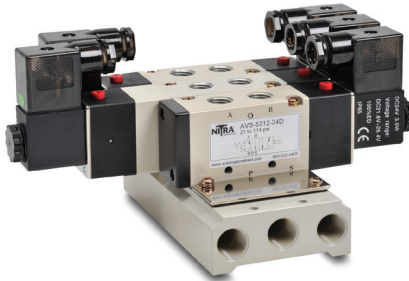




Pneumatic Directional Control Solenoid Valves – AVS-5 Series

AVS-5211



AVS-5221

Stacked solenoids shown mounted on optional manifold

NITRA™ pneumatic AVS-5 series directional control solenoid valves are body ported 5-port (4-way) spool valves. Available port sizes are 1/8", 1/4", 3/8" or 1/2" NPT with flow coefficients (Cv) from 0.50 to 2.79. Models are available with single solenoid, spring return or double solenoid 2-position operation. In addition, double solenoid models are available with 3-position, center closed or center exhaust operation. Solenoid coils are available in either 24VDC or 120VAC control voltages. The AVS-5 series can be used in individual valve applications or multiple valves can be field assembled on AM-5 series manifolds simplifying piping connections. AM-5 series manifolds are available in 2, 4, 6 or 8 stations. The DIN style wiring connector includes LED indication of the solenoid coil status.

Features

- Body ported, 5-port (4-way) spool valves
- 1/8", 1/4", 3/8" or 1/2" NPT ports
- 2-position, single solenoid normally closed, spring return; 2-position, double solenoid, energize open/energize closed; 3-position, double solenoid center closed or center exhaust
- 24VDC or 120VAC solenoid coils
- DIN style wiring connector with LED indication
- Single valve or multiple manifold mounted valve applications
- Locking manual operator
- Operating life up to 50,000,000 cycles
- 2 year warranty



AVS-5 Series Specifications																
Model	AVS-5111-24D	AVS-5111-120A	AVS-5121-24D	AVS-5121-120A	AVS-513C1-24D	AVS-513C1-120A	AVS-513E1-24D	AVS-513E1-120A	AVS-5211-24D	AVS-5211-120A	AVS-5221-24D	AVS-5221-120A	AVS-5212-24D	AVS-5212-120A	AVS-5222-24D	AVS-5222-120A
Price	\$18.00	\$18.00	\$29.00	\$29.00	\$42.00	\$42.00	\$42.00	\$42.00	\$21.50	\$21.50	\$32.50	\$32.50	\$21.50	\$21.50	\$32.50	\$32.50
Weight (lb)	0.3	0.3	0.4	0.4	0.5	0.5	0.5	0.5	0.5	0.5	0.8	0.8	0.5	0.5	0.8	0.8
Valve Type	5 port 2 position				5 port 3 position				5 port 2 position							
Acting	Internally Piloted															
Diagram	A		B		C		D		A		B		A		B	
Port Size	In/Out/Exhaust=1/8"				In/Out/Exhaust=1/8"				In/Out/Exhaust=1/8"				In/Out=1/4", Exhaust=1/8"			
Orifice Size	12mm² (Cv=0.67)				9mm² (Cv=0.50)				14mm² (Cv=0.78)				16mm² (Cv=0.89)			
Fluid	Air (to be filtered by 40μ filter element)															
Pressure	Working: 20–115 psi, (0.15–0.8 MPa), (1.5–8.0 bar); Proof: 215 psi, (1.48 MPa), (14.8 bar)															
Voltage (VAC @ 50/60 Hz)	24VDC single solenoid	120VAC single solenoid	24VDC double solenoid	120VAC double solenoid	24VDC center closed double solenoid	120VAC center closed double solenoid	24VDC center exhaust double solenoid	120VAC center exhaust double solenoid	24VDC single solenoid	120VAC single solenoid	24VDC double solenoid	120VAC double solenoid	24VDC single solenoid	120VAC single solenoid	24VDC double solenoid	120VAC double solenoid
Power Consumption	DC: 2.5W AC: 2.5 VA; continuous duty (100% ED)								DC: 3.0W AC: 3.5 VA; continuous duty (100% ED)							
Max Freq	5 cycles/sec				3 cycles/sec				5 cycles/sec							
Insulation	B class															
Min Response	0.05 sec															
Temperature	-5–60°C (23–140°F)															
Lubrication	Not Required															
Protection	IP65 (DIN40050)															
Connection	9.4 mm DIN Terminal								11mm DIN Terminal							
Body	Aluminum Alloy															
Agency Approvals	Solenoid CE marked; RoHS															



Pneumatic AVS Directional Control Solenoid Valves – AVS-5 Series



Diagram "A"



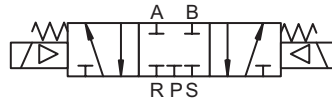
2-Pos, Spring Return

Diagram "B"



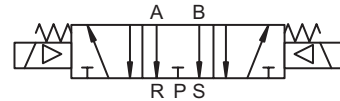
2-Pos, Double Solenoid

Diagram "C"



3-Pos, Closed Center

Diagram "D"



3-Pos, Exhaust Center

AVS-5 Series Specifications																
Model	AVS-5312-24D	AVS-5312-120A	AVS-5322-24D	AVS-5322-120A	AVS-5313-24D	AVS-5313-120A	AVS-5323-24D	AVS-5323-120A	AVS-523C1-24D	AVS-523C1-120A	AVS-523E1-24D	AVS-523E1-120A	AVS-523C2-24D	AVS-523C2-120A	AVS-523E2-24D	AVS-523E2-120A
Price	\$29.50	\$29.50	\$41.50	\$41.50	\$29.50	\$29.50	\$41.50	\$41.50	\$56.00	\$56.00	\$56.00	\$56.00	\$56.00	\$56.00	\$56.00	\$44.50
Weight (lb)	0.8	0.8	1.0	1.0	0.7	0.7	1.0	1.0	0.9	0.8	0.9	0.9	0.9	0.8	0.9	0.8
Valve Type	5 port 2 position								5 port 3 position							
Acting	Internally Piloted															
Diagram	A		B		A		B		C		D		C		D	
Port Size	In/Out/Exhaust=1/4"				In/Out=3/8", Exhaust=1/4"				In/Out/Exhaust=1/8"				In/Out=1/4", Exhaust=1/8"			
Orifice Size	25mm² (Cv=1.4)				30mm² (Cv=1.68)				12mm² (Cv=0.67)							
Fluid	Air (to be filtered by 40μ filter element)															
Pressure	Working: 20~115 psi, (0.15~0.8 MPa), (1.5~8.0 bar); Proof: 215 psi, (1.48 MPa), (14.8 bar)															
Voltage (VAC @ 50/60 Hz)	24VDC single solenoid	120VAC single solenoid	24VDC double solenoid	120VAC double solenoid	24VDC single solenoid	120VAC single solenoid	24VDC double solenoid	120VAC double solenoid	24VDC center closed double solenoid	120VAC center closed double solenoid	24VDC center exhaust double solenoid	120VAC center exhaust double solenoid	24VDC center closed double solenoid	120VAC center closed double solenoid	24VDC center exhaust double solenoid	120VAC center exhaust double solenoid
Power Consumption	DC: 3.0W AC: 3.5 VA; continuous duty (100% ED)															
Max Freq	4 cycles/sec								3 cycles/sec							
Insulation	B class															
Min Response	0.05 sec															
Temperature	-5~60°C (23~140°F)															
Lubrication	Not Required															
Protection	IP65 (DIN40050)															
Connection	11mm DIN Terminal															
Body	Aluminum Alloy															
Agency Approvals	Solenoid CE marked; RoHS															



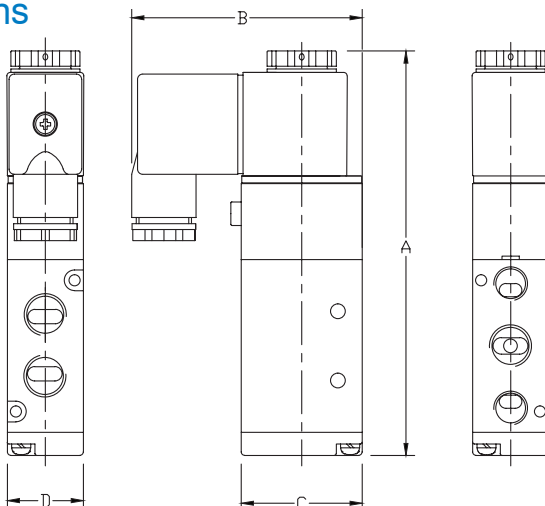
Pneumatic AVS Directional Control Solenoid Valves – AVS-5 Series

AVS-5 Series Specifications																
Model	AVS-533C2-24D	AVS-533C2-120A	AVS-533E2-24D	AVS-533E2-120A	AVS-533C3-24D	AVS-533C3-120A	AVS-533E3-24D	AVS-533E3-120A	AVS-5414-24D	AVS-5414-120A	AVS-5424-24D	AVS-5424-120A	AVS-543C4-24D	AVS-543C4-120A	AVS-543E4-24D	AVS-543E4-120A
Price	\$77.00	\$77.00	\$77.00	\$77.00	\$77.00	\$77.00	\$77.00	\$77.00	\$44.00	\$44.00	\$56.00	\$56.00	\$77.00	\$77.00	\$77.00	\$77.00
Weight (lb)	1.1	1.1	1.1	1.1	1.1	1.1	1.1	1.1	1.3	1.3	1.5	1.5	1.7	1.7	1.7	1.7
Valve Type	5 port 3 position								5 port 2 position				5 port 3 position			
Acting	Internally Piloted															
Diagram	C		D		C		D		A		B		C		D	
Port Size	In/Out/Exhaust=1/4"				In/Out=3/8", Exhaust=1/4"				In/Out/Exhaust=1/2"							
Orifice Size	18mm² (Cv=1.0)								50mm² (Cv=2.79)				30mm² (Cv=1.68)			
Fluid	Air (to be filtered by 40µ filter element)															
Pressure	Working: 20–115 psi, (0.15–0.8 MPa), (1.5–8.0 bar); Proof: 215 psi, (1.48 MPa), (14.8 bar)															
Voltage (VAC @ 50/60 Hz)	24VDC center closed double solenoid	120VAC center closed double solenoid	24VDC center exhaust double solenoid	120VAC center exhaust double solenoid	24VDC center closed double solenoid	120VAC center closed double solenoid	24VDC center exhaust double solenoid	120VAC center exhaust double solenoid	24VDC single solenoid	120VAC single solenoid	24VDC double solenoid	120VAC double solenoid	24VDC center closed double solenoid	120VAC center closed double solenoid	24VDC center exhaust double solenoid	120VAC center exhaust double solenoid
Power Consumption	DC: 3.0W AC: 3.5 VA; continuous duty (100% ED)															
Max Freq	3 cycles/sec															
Insulation	B class															
Min Response	0.05 sec															
Temperature	-5–60°C (23–140°F)															
Lubrication	Not Required															
Protection	IP65 (DIN40050)															
Connection	11mm DIN Terminal															
Body	Aluminum Alloy															
Agency Approvals	Solenoid CE marked; RoHS															

Dimensions

mm [inches]

AVS-5111,
AVS-5211,
AVS-5212,
AVS-5312,
AVS-5313,
AVS-5414



DIMENSION TABLE				
PART NO.	A	B	C	D
AVS-5111-XXX	99.4 [3.91]	55.0 [2.17]	27.0 [1.06]	18.0 [0.71]
AVS-5211-XXX	117.1 [4.61]	66.7 [2.63]	35.0 [1.38]	22.0 [0.87]
AVS-5212-XXX	117.1 [4.61]	66.7 [2.63]	35.0 [1.38]	22.0 [0.87]
AVS-5312-XXX	134.9 [5.31]	69.2 [2.72]	40.0 [1.57]	27.0 [1.06]
AVS-5313-XXX	134.9 [5.31]	69.2 [2.72]	40.0 [1.57]	27.0 [1.06]
AVS-5414-XXX	168.4 [6.63]	74.0 [2.91]	50.0 [1.97]	34.0 [1.34]

See our website www.AutomationDirect.com
for complete Engineering drawings.

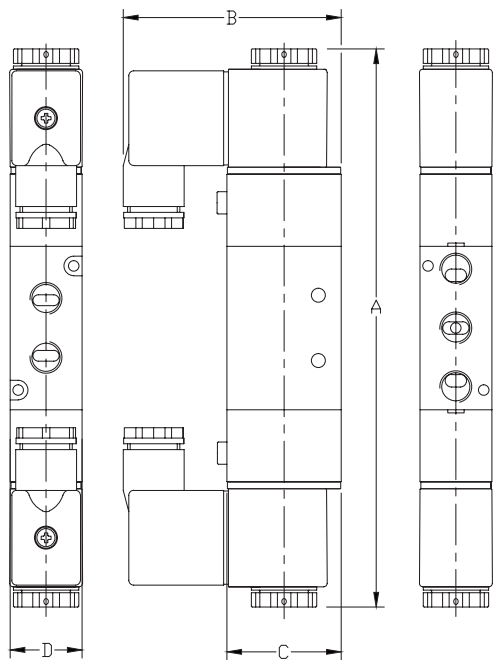


Pneumatic Directional Control Solenoid Valves – AVS-5 Series

Dimensions

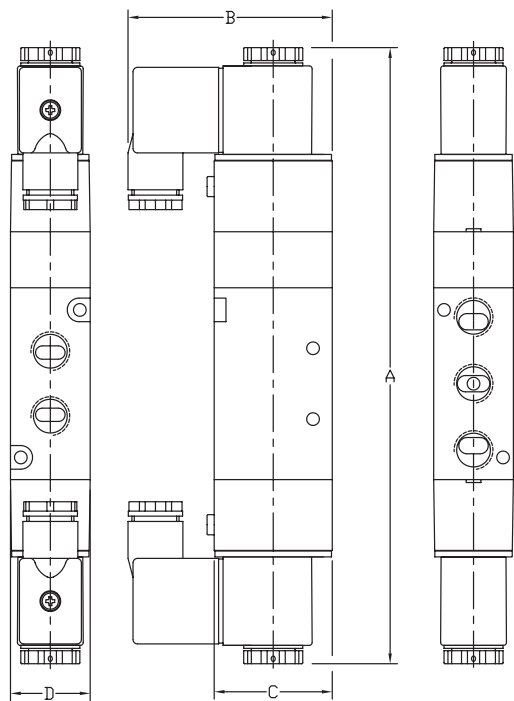
mm [inches]

**AVS-5121,
AVS-5221,
AVS-5222,
AVS-5322,
AVS-5323,
AVS-5424**



DIMENSION TABLE				
PART NO.	A	B	C	D
AVS-5121-XXX	142.4 [5.61]	54.8 [2.16]	27.0 [1.06]	18.0 [0.71]
AVS-5221-XXX	170.8 [6.72]	66.7 [2.63]	35.0 [1.38]	22.0 [0.87]
AVS-5222-XXX	170.8 [6.72]	66.7 [2.63]	35.0 [1.38]	22.0 [0.87]
AVS-5322-XXX	189.8 [7.47]	69.2 [2.72]	40.0 [1.57]	27.0 [1.06]
AVS-5323-XXX	189.8 [7.47]	69.2 [2.72]	40.0 [1.57]	27.0 [1.06]
AVS-5424-XXX	222.8 [8.77]	74.0 [2.91]	50.0 [1.97]	34.0 [1.34]

**AVS-513xx,
AVS-523xx,
AVS-533xx,
AVS-543xx**



DIMENSION TABLE				
PART NO.	A	B	C	D
AVS-513XX-XXX	157.4 [6.20]	54.8 [2.16]	26.6 [1.05]	18.0 [0.71]
AVS-523XX-XXX	189.8 [7.47]	66.7 [2.63]	35.0 [1.38]	22.0 [0.87]
AVS-533XX-XXX	208.8 [8.22]	69.2 [2.72]	40.0 [1.57]	27.0 [1.06]
AVS-543XX-XXX	243.8 [9.60]	74.0 [2.91]	50.0 [1.97]	34.0 [1.34]

See our website www.AutomationDirect.com
for complete Engineering drawings.



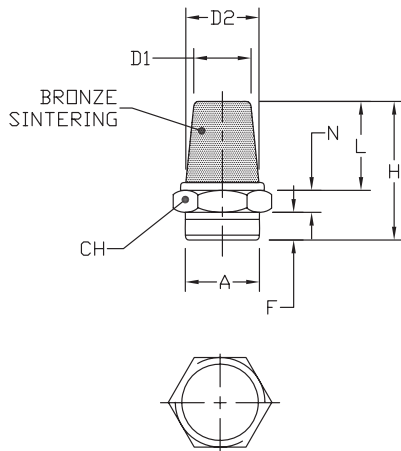
Exhaust Silencers

NITRA™ exhaust silencers are available in three styles and nine popular NPT and BSPT sizes. Add these to the exhaust ports of NITRA directional control solenoid valves to reduce noise.

Features

- Inch and metric sizes available
- Bronze cone and flat styles
- Plastic cylindrical
- Maximum pressure = 150 psi

SBC Silencers



SBC Series



SBF Series



SPL Series

NITRA™ Bronze Cone Silencers											
Inch Sizes - dimensions in inches [mm]											
Part No.	Price	A	CH	D1	D2	F	H	L	N	Package Weight (lb)	Qty. per pack
SBC-18N	\$2.50	MNPT 1/8	0.47 [12.0]	0.32 [8.0]	0.28 [7.0]	0.24 [6.0]	0.94 [24.0]	0.55 [14.0]	0.16 [4.0]	0.01	2
SBC-14N	\$3.00	MNPT 1/4	0.63 [16.0]	0.47 [12.0]	0.40 [10.0]	0.32 [8.0]	1.18 [30.0]	0.71 [18.0]	0.16 [4.0]	0.01	
SBC-38N	\$4.00	MNPT 3/8	0.71 [18.0]	0.55 [14.0]	0.39 [11.0]	0.35 [9.0]	1.38 [35.0]	0.83 [21.0]	0.197 [5.0]	0.05	
SBC-12N	\$6.25	MNPT 1/2	0.94 [24.0]	0.75 [19.0]	0.59 [15.0]	0.40 [10.0]	1.73 [44.0]	1.10 [28.0]	0.24 [6.0]	0.15	
Metric Sizes - dimensions in inches [mm]											
SBC-M5	\$2.00	M5	0.31 [8.0]	0.20 [5.0]	0.16 [4.0]	0.20 [5.0]	0.79 [20.0]	0.47 [12.0]	0.12 [3.0]	0.01	2
SBC-18R	\$2.50	R 1/8	0.47 [12.0]	0.32 [8.0]	0.28 [7.0]	0.24 [6.0]	0.94 [24.0]	0.55 [14.0]	0.16 [4.0]	0.01	
SBC-14R	\$3.00	R 1/4	0.63 [16.0]	0.47 [12.0]	0.40 [10.0]	0.32 [8.0]	1.18 [30.0]	0.71 [18.0]	0.16 [4.0]	0.01	
SBC-38R	\$4.00	R 3/8	0.71 [18.0]	0.55 [14.0]	0.39 [11.0]	0.35 [9.0]	1.38 [35.0]	0.83 [21.0]	0.197 [5.0]	0.05	
SBC-12R	\$6.25	R 1/2	0.94 [24.0]	0.75 [19.0]	0.59 [15.0]	0.40 [10.0]	1.73 [44.0]	1.10 [28.0]	0.24 [6.0]	0.15	

Flow Characteristics

Bronze Cone Silencers

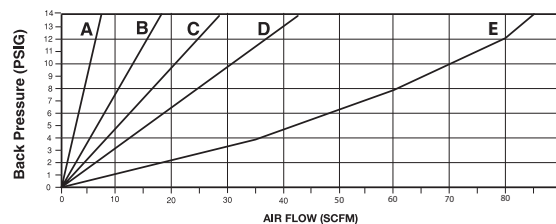
A: SBC-M5

B: SBC-18N; SBC-18R

C: SBC-14N; SBC-14R

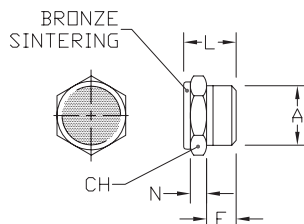
D: SBC-38N; SBC-38R

E: SBC-12N; SBC-12R



Noise Elimination = > 20db
Filtered Element = 40 micron

SBF Silencers



NITRA™ Bronze Flat Silencers								
Inch Sizes - dimensions in inches [mm]								
Part No.	Price	A	CH	F	L	N	Package Weight (lb)	Qty. per pack
SBF-18N	\$2.50	MNPT 1/8	0.47 [12.0]	0.24 [6.0]	0.47 [12.0]	0.16 [4.0]	0.01	2
SBF-14N	\$3.00	MNPT 1/4	0.67 [17.0]	0.32 [8.0]	0.59 [15.0]	0.16 [4.0]	0.01	
SBF-38N	\$4.00	MNPT 3/8	0.75 [19.0]	0.35 [9.0]	0.67 [17.0]	0.20 [5.0]	0.05	
SBF-12N	\$6.25	MNPT 1/2	0.94 [24.0]	0.40 [10.0]	0.71 [18.0]	0.24 [6.0]	0.15	
Metric Sizes - dimensions in inches [mm]								
SBF-M5	\$2.00	M5	0.31 [8.0]	0.20 [5.0]	0.35 [9.0]	0.12 [3.0]	0.01	2
SBF-18R	\$2.50	R 1/8	0.47 [12.0]	0.24 [6.0]	0.47 [12.0]	0.16 [4.0]	0.01	
SBF-14R	\$3.00	R 1/4	0.67 [17.0]	0.32 [8.0]	0.59 [15.0]	0.16 [4.0]	0.01	
SBF-38R	\$4.00	R 3/8	0.75 [19.0]	0.35 [9.0]	0.67 [17.0]	0.20 [5.0]	0.05	
SBF-12R	\$6.25	R 1/2	0.94 [24.0]	0.40 [10.0]	0.71 [18.0]	0.24 [6.0]	0.15	



Exhaust Silencers

Flow Characteristics

Bronze Flat Silencers

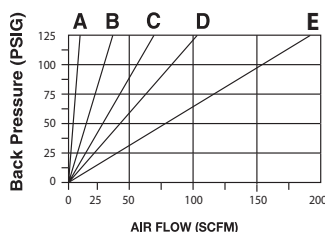
A: SBF-M5

B: SBF-18N; SBF-18R

C: SBF-14N; SBF-14R

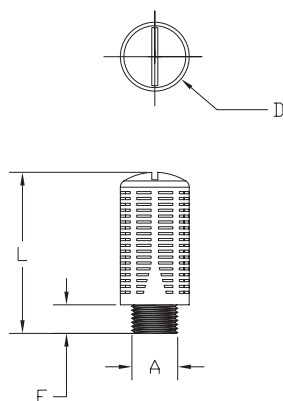
D: SBF-28N; SBF-38R

E: SBF-12N; SBF-12R



Noise Elimination = > 30db
Filtered Element = 40 micron

SPL Silencers



Note: SPL series plastic exhaust silencers have a maximum pressure of 150 PSI.

NITRA™ Plastic Exhaust Silencers							
Inch Sizes - dimensions in inches [mm]							
Part No.	Price	A	D	L	F	Package Weight (lbs)	Qty. per pack
SPL-18N	\$2.00	MNPT 1/8	0.55 [13.8]	1.28 [32.4]	0.33 [8.3]	0.02	2
SPL-14N	\$2.25	MNPT 1/4	0.68 [17.3]	1.68 [42.5]	0.39 [9.9]	0.03	
SPL-38N	\$2.50	MNPT 3/8	0.87 [22.0]	2.10 [53.4]	0.40 [10.0]	0.06	
SPL-12N	\$2.50	MNPT 1/2	1.00 [25.4]	2.66 [67.6]	0.44 [11.1]	0.08	
Metric Sizes - dimensions in inches [mm]							
SPL-18R	\$2.00	R 1/8	0.60 [15.2]	1.33 [33.7]	0.24 [6.1]	0.02	2
SPL-14R	\$2.25	R 1/4	0.60 [18.8]	1.60 [40.6]	0.31 [7.7]	0.03	
SPL-38R	\$2.50	R 3/8	0.94 [24.0]	2.20 [55.9]	0.39 [9.9]	0.06	
SPL-12R	\$2.50	R 1/2	0.94 [24.0]	2.20 [55.9]	0.39 [9.9]	0.08	

Flow Characteristics

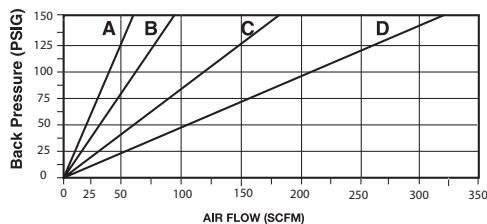
Plastic Silencers

A: SPL-18N; SPL-18R

B: SPL-14N; SPL-14R

C: SPL-38N; SPL-38R

D: SPL-12N; SPL-12R



Noise Elimination = > 30db
Filtered Element = 40 micron



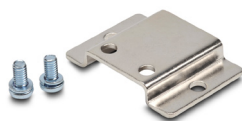
Pneumatic Directional Control Solenoid Valve Manifolds and Accessories



AM Series Manifolds



AM-52BP



AVP-31BKT



AVP-31KIT

Pneumatic Directional Control Solenoid Valve Series Accessories			
Part No.	Price	Description	Weight (lb)
AM-512	\$7.25	NITRA pneumatic valve manifold, 5-port (4-way), 2-station, aluminum, for use with AVS-51 series directional control valves. Valve mounting screws and gaskets included.	0.4
AM-514	\$12.75	NITRA pneumatic valve manifold, 5-port (4-way), 4-station, aluminum, for use with AVS-51 series directional control valves. Valve mounting screws and gaskets included.	0.6
AM-516	\$18.25	NITRA pneumatic valve manifold, 5-port (4-way), 6-station, aluminum, for use with AVS-51 series directional control valves. Valve mounting screws and gaskets included.	0.8
AM-518	\$25.50	NITRA pneumatic valve manifold, 5-port (4-way), 8-station, aluminum, for use with AVS-51 series directional control valves. Valve mounting screws and gaskets included.	1.1
AM-51BP	\$4.00	NITRA pneumatic blanking plate, plated steel, for use with AM-51 series manifolds. Mounting screws included.	0.1
AM-522	\$10.00	NITRA pneumatic valve manifold, 5-port (4-way), 2-station, aluminum, for use with AVS-52 series directional control valves. Valve mounting screws and gaskets included.	0.5
AM-524	\$20.00	NITRA pneumatic valve manifold, 5-port (4-way), 4-station, aluminum, for use with AVS-52 series directional control valves. Valve mounting screws and gaskets included.	0.9
AM-526	\$30.50	NITRA pneumatic valve manifold, 5-port (4-way), 6-station, aluminum, for use with AVS-52 series directional control valves. Valve mounting screws and gaskets included.	1.2
AM-528	\$40.50	NITRA pneumatic valve manifold, 5-port (4-way), 8-station, aluminum, for use with AVS-52 series directional control valves. Valve mounting screws and gaskets included.	1.5
AM-52BP	\$4.25	NITRA pneumatic blanking plate, plated steel, for use with AM-54 series manifolds. Mounting screws included.	0.1
AM-532	\$15.50	NITRA pneumatic valve manifold, 5-port (4-way), 2-station, aluminum, for use with AVS-53 series directional control valves. Valve mounting screws and gaskets included.	0.8
AM-534	\$30.00	NITRA pneumatic valve manifold, 5-port (4-way), 4-station, aluminum, for use with AVS-53 series directional control valves. Valve mounting screws and gaskets included.	1.4
AM-536	\$46.00	NITRA pneumatic valve manifold, 5-port (4-way), 6-station, aluminum, for use with AVS-53 series directional control valves. Valve mounting screws and gaskets included.	1.9
AM-538	\$60.00	NITRA pneumatic valve manifold, 5-port (4-way), 8-station, aluminum, for use with AVS-53 series directional control valves. Valve mounting screws and gaskets included.	2.5
AM-53BP	\$4.25	NITRA pneumatic blanking plate, plated steel, for use with AM-53 series manifolds. Mounting screws provided.	0.1
AM-542	\$16.50	NITRA pneumatic valve manifold, 5-port (4-way), 2-station, aluminum, for use with AVS-54 series directional control valves. Valve mounting screws and gaskets included.	1.7
AM-544	\$33.50	NITRA pneumatic valve manifold, 5-port (4-way), 4-station, aluminum, for use with AVS-54 series directional control valves. Valve mounting screws and gaskets included.	2.8
AM-546	\$52.00	NITRA pneumatic valve manifold, 5-port (4-way), 6-station, aluminum, for use with AVS-54 series directional control valves. Valve mounting screws and gaskets included.	4.0
AM-548	\$62.00	NITRA pneumatic valve manifold, 5-port (4-way), 8-station, aluminum, for use with AVS-54 series directional control valves. Valve mounting screws and gaskets included.	5.2
AM-54BP	\$4.00	NITRA pneumatic blanking plate, plated steel, for use with AM-54 series manifolds. Mounting screws included.	0.1
AVP-31BKT	\$1.00	NITRA pneumatic individual mounting bracket for use with AVP-31 series directional control valves.	0.1
AVP-31KIT	\$1.75	NITRA pneumatic stacking screw kit for use with AVP-31 directional control valves. One kit is required for each additional AVP-31 valve added to the stack.	0.1

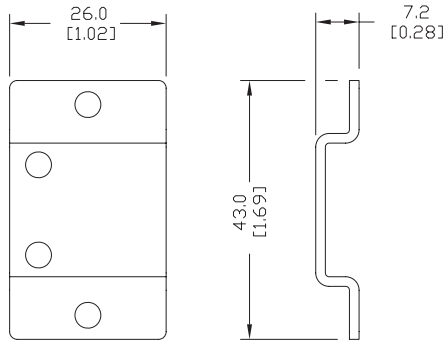


Pneumatic Directional Control Solenoid Valve Manifolds and Accessories

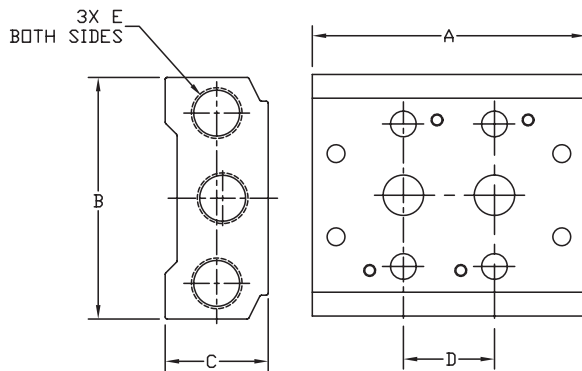
Dimensions

mm [inches]

AVP-31BKT



AM 51 Series Manifolds



MANIFOLD DIMENSIONS					
PART NO.	A	B	C	D	E
AM-512	57.0 [2.24]	58.0 [2.28]	25.0 [0.98]	19.0 [0.75]*	1/4 NPT
AM-514	95.0 [3.74]			3X 19.0 [0.75]*	
AM-516	133.0 [5.24]			5X 19.0 [0.75]*	
AM-518	171.0 [6.73]			7X 19.0 [0.75]*	
AM-522	69.0 [2.72]	61.0 [2.40]	26.0 [1.02]	23.0 [0.91]	3/8 NPT
AM-524	115.0 [4.53]			3X 23.0 [0.91]	
AM-526	161.0 [6.34]			5X 23.0 [0.91]	
AM-528	207.0 [8.15]			7X 23.0 [0.91]	
AM-532	82.0 [3.23]	75.0 [2.95]	30.0 [1.19]	28.0 [1.10]	1/2 NPT
AM-534	138.0 [5.46]			3X 28.0 [1.10]	
AM-536	194.0 [7.64]			5X 28.0 [1.10]	
AM-538	250.0 [9.84]			7X 28.0 [1.10]	
AM-542	98.0 [3.86]	104.0 [4.09]	38.0 [1.50]	35.0 [1.38]	1/2 NPT
AM-544	168.0 [6.61]			3X 35.0 [1.38]	
AM-546	238.0 [9.37]			5X 35.0 [1.38]	
AM-548	308.0 [12.13]			7X 35.0 [1.38]	

* Exhaust holes have 1mm offset from spacing centerline.

See our website www.AutomationDirect.com for complete Engineering drawings.

Solenoid Valve Cables and Connectors



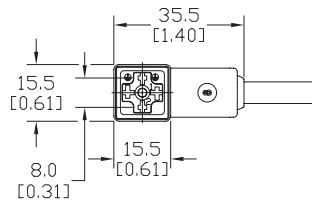
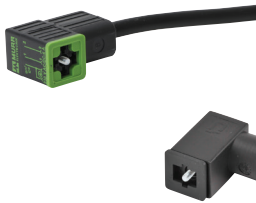
These high quality connectors and over-molded cables help reduce wiring time. The lower voltage models, 24V or 110V AC/DC, include built-in surge suppression, Yellow LED indicator and are rated for connecting with electronics. The 230V AC/DC models are rated for straight wired products. All models are available in five sizes based on DIN 43650.

Features

- 8mm, 9.4mm, 10mm, 11mm and 18mm square DIN styles
- Fits most popular solenoid valves and sensors
- Suppression and LED indication available in 24V or 110V AC/DC models
- PVC jacketed cables in 1, 3 or 5 meter lengths on select connectors
- Field wireable connectors on select models
- Polarity insensitive (follow solenoid, sensor, or other devices wiring diagram)

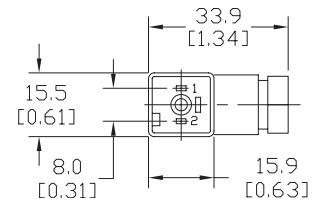
8mm Connectors

Dimensions shown
mm [inches]



Height = 25mm [0.98in]

Connector with Cable



Height = 26mm [1.02]

Field Wireable Connector

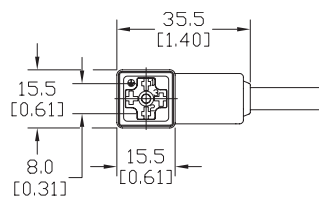
8mm (3-pole) Connectors (per DIN 43650 Form C)												
Part No.	Price	Voltage (AC/DC)	Current Rating	IP Rating	Wire Size	Cable Dia. (in.)	LED	Surge Protection	Wiring Figure	Screw Size/Torque	Weight (lbs)	Agency Approval
SC8-LS24-3	\$11.00	24 ±20%	max 4A	67	18 AWG	0.23	yes	zener diode (D-Z DO-15 47V 2W)	1	m2.5-0.45x25mm/ 0.4 Nm (3.5 in lb)	0.40	CSA (080128-0-000)
SC8-LS24-5	\$13.00							zener diode (D-Z DO-15 47V 2W)	7		0.65	
SC8-LS110-3	\$13.50	110 ±10%	max 4A	67	18 AWG	0.23	yes	zener diode (D-Z DO-41 ZY200 2W)	7	m2.5-0.45x25mm/ 0.4 Nm (3.5 in lb)	0.41	CSA (080128-0-000)
SC8-LS110-5	\$16.00							zener diode (D-Z DO-41 ZY200 2W)	7		0.63	
SC8-3	\$9.75	230	max 6A	65	Solid 12 AWG Stranded 14 AWG w/Ferrule 16 AWG	gland size 0.20 to 0.24	no	none	2	m2.5-0.45x25mm/ 0.5 Nm (4.4 in lb)	0.39	none
SC8-0	\$5.00								9		0.10	
SC8-1	\$9.75								9		0.10	
SC8-5	\$12.00								2		0.68	

Please note: The above parts are not compatible with the AVP and AVS series valves, which have 11mm DIN plugs.

Last digit in part number denotes cable length in meters, a 0 indicates field termination.

8mm Transmitter Connector

Dimensions shown
mm [inches]



Height = 25mm [0.98in]

Connector with Cable

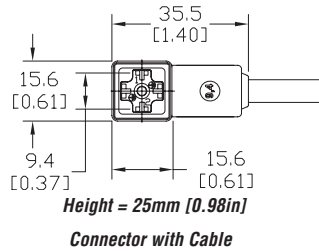
8mm (4-pole) Connectors (per DIN 43650 Form C)												
Part No.	Price	Voltage (AC/DC)	Current Rating	IP Rating	Wire Size	Cable Dia. (in.)	LED	Surge Protection	Wiring Figure	Screw Size/Torque	Weight (lbs)	Agency Approval
SC8-5T	\$17.00	230	max 6A	67	18 AWG	0.26	yes	none	8	m3-0.5x42mm/ 0.5 Nm (4.4 in lb)	0.80	CSA (080128-0-000)

Last digit in part number denotes cable length in meters, a 0 indicates field termination.

Solenoid Valve Cables and Connectors

9.4mm Connectors

Dimensions shown
mm [inches]



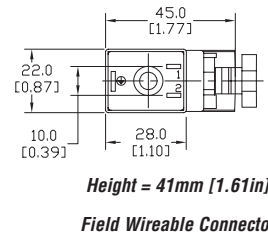
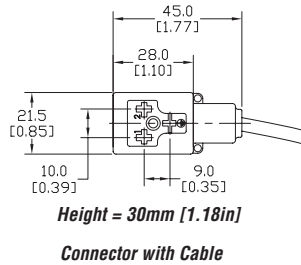
9.4mm (3-pole) Connectors (DIN Style, Form C Industrial)

Part No.	Price	Voltage (AC/DC)	Current Rating	IP Rating	Wire Size	Cable Dia. (in.)	LED	Surge Protection	Wiring Figure	Screw Size/ Torque	Weight (lbs)	Agency Approval
SC9-LS24-3	\$11.00	24 ±20%	max 4A	67	18 AWG	0.23	yes	zener diode (D-Z DO-15 47V 2W)	1	m3-0.5x26mm/ 0.4 Nm (3.5 in lb)	0.40	CSA (080128-0-000)
SC9-LS24-5	\$13.00										0.64	
SC9-LS110-3	\$13.50	110 ±10%						zener diode (D-Z DO-41 ZY200 2W)	7		0.40	
SC9-LS110-5	\$16.00								0.64			
SC9-3	\$9.75	230	max 6A				no	none	2	m3-0.5x26mm/ 0.5 Nm (4.4 in lb)	0.40	none
SC9-5	\$12.00										0.64	

Please note: The above parts are not compatible with the AVP and AVS series valves, which have 11mm DIN plugs.
Last digit in part number denotes cable length in meters.

10mm Connectors

Dimensions shown
mm [inches]



10mm (3-pole) Connectors (per DIN 43650 Form B)

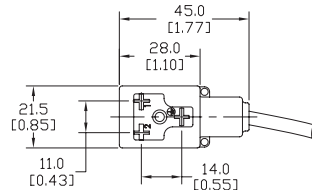
Part No.	Price	Voltage (AC/DC)	Current Rating	IP Rating	Wire Size	Cable Dia. (in.)	LED	Surge Protection	Wiring Figure	Screw Size/ Torque	Weight (lbs)	Agency Approval
SC10-LS24-3	\$11.00	24 ±20%	max 4A	67	18 AWG	0.23	yes	zener diode (D-Z DO-15 47V 2W)	10	m3-0.5x30mm/ 0.4 Nm (3.5 in lb)	0.43	CSA (080128-0-000)
SC10-LS24-5	\$13.00										0.68	
SC10-LS110-3	\$13.50	110 ±10%	max 1A					zener diode (D-Z DO-41 ZY200 2W)	6		0.43	
SC10-LS110-5	\$16.00							0.68				
SC10-3	\$9.75	230	max 10A				no	none	3	0.43		
SC10-5	\$12.00									0.68		
SC10-LS24-0	\$9.50	24 ±20%	max 4A	65	Solid 12 AWG Stranded 14 AWG w/Ferrule 16 AWG	gland size 0.24 to 0.32	yes	zener diode (D-Z DO-15 47V 2W)	4	m3-0.5x42mm/ 0.5 Nm (4.4 in lb)	0.07	none
SC10-LS110-0	\$10.00	110 ±10%	max 1A					mov (SIOV S10 K130)	5		0.07	
SC10-0	\$7.50	230	max 10A				no	none	9		0.06	

Please note: The above parts are not compatible with the AVP and AVS series valves, which have 11mm DIN plugs.
Last digit in part number denotes cable length in meters, a 0 indicates field termination.

Solenoid Valve Cables and Connectors

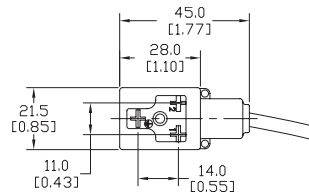
11mm Connectors

Dimensions shown
mm [inches]



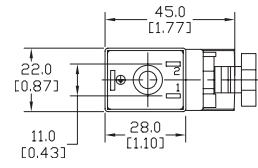
Height = 30mm [1.18in]

Connector with Cable



Height = 30mm [1.18in]

Reverse Connector with Cable



Height = 41mm [1.61in]

Field Wireable Connector

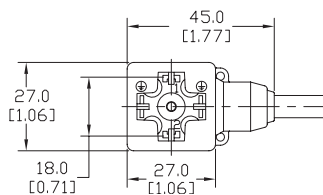
11mm (3-pole) Connectors (DIN Style, Form B Industrial)

Part No.	Price	Voltage (AC/DC)	Current Rating	IP Rating	Wire Size	Cable Dia. (in)	LED	Surge Protection	Wiring Figure	Screw Size/ Torque	Weight (lbs)	Agency Approval
SC11-LS24-3	\$11.00	24 ±20%	max 4A	67	18 AWG	0.23	yes	zener diode (D-Z DO-15 47V 2W)	10	m3-0.5x30mm/ 0.4 Nm (3.5 in lb)	0.44	CSA (080128-0-000)
SC11-LS24-5	\$13.00										0.67	
SC11-LS110-3	\$13.50	110 ±10%	max 1A					zener diode (D-Z DO-41 ZY200 2W)	6		0.44	
SC11-LS110-5	\$16.00										0.67	
SC11-LS24-3R	\$11.00	24 ±20%	max 4A					zener diode (D-Z DO-15 47V 2W)	10		0.44	
SC11-LS24-5R	\$13.00										0.67	
SC11-LS110-3R	\$13.50	110 ±10%	max 1A					zener diode (D-Z DO-41 ZY200 2W)	6		0.44	
SC11-LS110-5R	\$16.00										0.67	
SC11-3	\$9.75	230	max 10A				no	none	3		0.44	
SC11-5	\$12.00								0.67			
SC11-LS24-0	\$9.50	24 ±20%	max 4A	65	Solid 12 AWG Stranded 14 AWG w/Ferrule 16 AWG	gland size 0.24 to 0.32	yes	zener diode (D-Z DO-15 47V 2W)	4	m3-0.5x42mm/ 0.5 Nm (4.4 in lb)	0.07	none
SC11-LS110-0	\$10.00	110 ±10%	max 1A					mov (SIOV S10 K130)	5		0.07	
SC11-0	\$7.50	230	max 10A				no	none	9		0.07	

Last digit in part number denotes cable length in meters, a 0 indicates field termination.

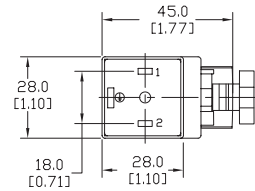
18mm Connectors

Dimensions shown
mm [inches]



Height = 30mm [1.18in]

Connector with Cable



Height = 41mm [1.61in]

Field Wireable Connector

18mm (3-pole) Connectors (per DIN 43650 Form A)

Part No.	Price	Voltage (AC/DC)	Current Rating	IP Rating	Wire Size	Cable Dia. (in)	LED	Surge Protection	Wiring Figure	Screw Size/ Torque	Weight (lbs)	Agency Approval
SC18-LS24-3	\$11.00	24 ±20%	max 4A	67	18 AWG	0.23	yes	zener diode (D-Z DO-15 47V 2W)	7	m3-0.5x30mm/ 0.4 Nm (3.5 in lb)	0.44	CSA (080128-0-000)
SC18-LS24-5	\$13.00										0.69	
SC18-LS110-3	\$13.50	110 ±10%	max 1A					zener diode (D-Z DO-41 ZY200 2W)				
SC18-LS110-5	\$16.00							0.69				
SC18-3	\$9.75	230	max 10A				no	none	2		0.44	
SC18-5	\$12.00										0.69	
SC18-LS24-0	\$9.50	24 ±20%	max 4A	65	Solid 12 AWG Stranded 14 AWG w/Ferrule 16 AWG	gland size 0.24 to 0.32	yes	zener diode (D-Z DO-15 47V 2W)	4	m3-0.5x42mm/ 0.5 Nm (4.4 in lb)	0.07	none
SC18-LS110-0	\$10.00	110 ±10%	max 1A					mov (SIOV S10 K130)	5		0.07	
SC18-0	\$7.50	230	max 10A				no	none	9		0.07	

Please note: The above parts are not compatible with the AVP and AVS series valves, which have 11mm DIN plugs.

Last digit in part number denotes cable length in meters, a 0 indicates field termination.

Solenoid Valve Cables and Connectors Wiring Diagrams

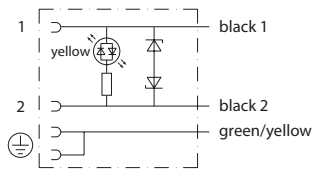


Figure No. 1

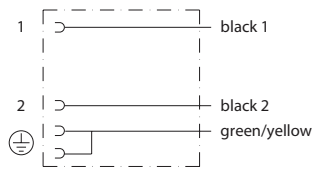


Figure No. 2

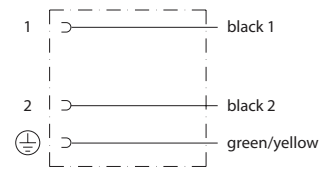


Figure No. 3

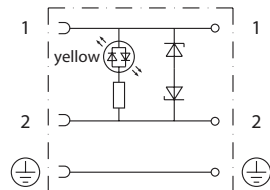


Figure No. 4

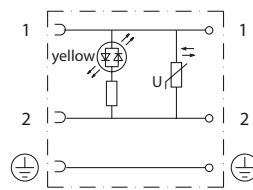


Figure No. 5

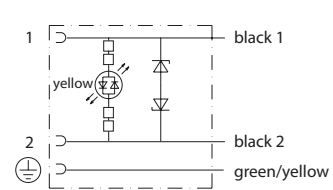


Figure No. 6

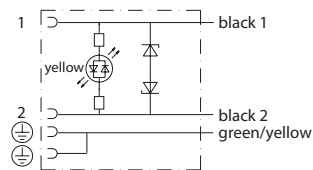


Figure No. 7

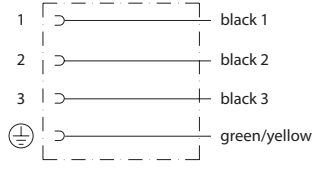


Figure No. 8

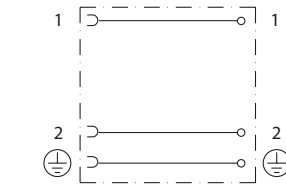


Figure No. 9

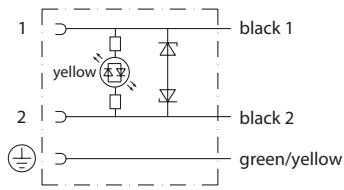


Figure No. 10