

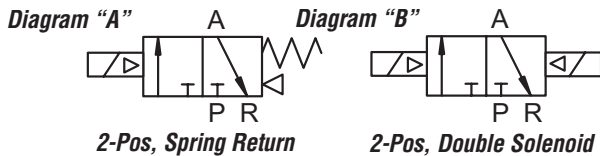


Pneumatic Directional Control Solenoid Valves – AVS-3 Series



AVS-3221

AVS-3211



NITRA™ pneumatic AVS-3 series directional control solenoid valves are body ported 3-port (3-way) spool valves. Available port sizes are 1/8", 1/4" or 3/8" NPT with flow coefficients (Cv) from 0.67 to 1.67. The single solenoid models provide 2-position, normally closed, spring return operation and the double solenoid models provide 2-position, energize open/energize closed operation. Solenoid coils are available in either 24VDC or 120VAC control voltages. The DIN style wiring connector includes LED indication of the solenoid coil status.

Features

- Body ported, 3-port (3-way) spool valves
- 1/8", 1/4" or 3/8" NPT ports
- 2-position, single solenoid normally closed spring return;
2-position, double solenoid energize open/energize closed
- 24VDC or 120VAC solenoid coils
- DIN style wiring connector with LED indication
- Locking manual operator
- Operating life up to 50,000,000 cycles
- 2 year warranty



| AVS-3 Series Specifications | | | | | | | | | | |
|-----------------------------|--|------------------------------|--|------------------------------|-----------------------------|------------------------------|-----------------------------|------------------------------|-----------------------------|------------------------------|
| Model | AVS-3111-24D | AVS-3111-120A | AVS-3211-24D | AVS-3211-120A | AVS-3221-24D | AVS-3221-120A | AVS-3212-24D | AVS-3212-120A | AVS-3222-24D | AVS-3222-120A |
| Price | \$18.00 | \$18.00 | \$21.50 | \$21.50 | \$32.50 | \$32.50 | \$21.50 | \$21.50 | \$32.50 | \$32.50 |
| Weight (lb) | 0.3 | 0.3 | 0.5 | 0.5 | 0.8 | 0.7 | 0.5 | 0.5 | 0.7 | 0.7 |
| Valve Type | 3 port 2 position | | | | | | | | | |
| Acting | Internally Piloted | | | | | | | | | |
| Diagram | A | | A | | B | | A | | B | |
| Port Size | In/Out=1/8" | | In/Out=1/8" | | | | In/Out=1/4" | | | |
| Orifice Size | 12mm² (Cv=0.67) | | 14mm² (Cv=0.78) | | | | 16mm² (Cv=0.89) | | | |
| Fluid | Air (to be filtered by 40µ filter element) | | | | | | | | | |
| Pressure | Working: 20–115 psi, (0.15–0.8 MPa), (1.5–8.0 bar); Proof: 215 psi, (1.48 MPa), (14.8 bar) | | | | | | | | | |
| Voltage | 24VDC single solenoid | 120VAC single solenoid | 24VDC single solenoid | 120VAC single solenoid | 24VDC double solenoid | 120VAC double solenoid | 24VDC single solenoid | 120VAC single solenoid | 24VDC double solenoid | 120VAC double solenoid |
| Power Consumption | DC: 2.5W AC: 2.5 VA; continuous duty (100% ED) | | DC: 3.0W AC: 3.5 VA; continuous duty (100% ED) | | | | | | | |
| Max Freq | 5 cycles/sec | | | | | | | | | |
| Insulation | B class | | | | | | | | | |
| Min Response | 0.05 sec | | | | | | | | | |
| Temperature | -5–60°C (23–140°F) | | | | | | | | | |
| Lubrication | Not Required | | | | | | | | | |
| Protection | IP65 (DIN40050) | | | | | | | | | |
| Connection | 9.4 mm DIN Terminal | | 11mm DIN Terminal | | | | | | | |
| Body | Aluminum Alloy | | | | | | | | | |
| Agency Approvals | Solenoid CE marked; RoHS | | | | | | | | | |



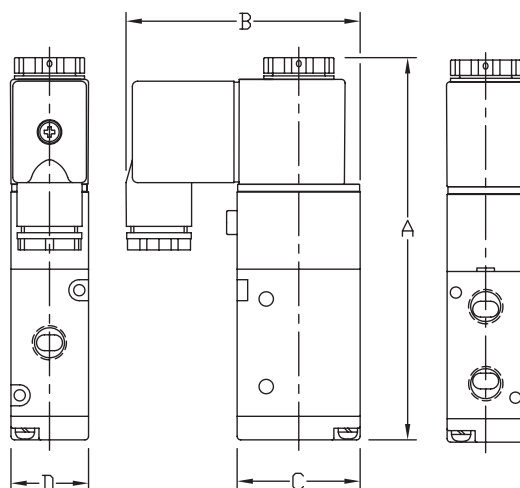
Pneumatic Directional Control Solenoid Valves – AVS-3 Series

| AVS-3 Series Specifications | | | | | | | | |
|-----------------------------|--|------------------------|-----------------------|------------------------|-----------------------|------------------------|-----------------------|------------------------|
| Model | AVS-3312-24D | AVS-3312-120A | AVS-3322-24D | AVS-3322-120A | AVS-3313-24D | AVS-3313-120A | AVS-3323-24D | AVS-3323-120A |
| Price | \$29.50 | \$29.50 | \$39.50 | \$38.00 | \$29.50 | \$29.50 | \$40.50 | \$40.50 |
| Weight (lb) | 0.7 | 0.7 | 0.9 | 0.9 | 0.7 | 0.7 | 0.9 | 0.9 |
| Valve Type | 3 port 2 position | | | | | | | |
| Acting | Internally Piloted | | | | | | | |
| Diagram | A | | B | | A | | B | |
| Port Size | In/Out=1/4" | | | | In/Out=3/8" | | | |
| Orifice Size | 25mm² (Cv=1.39) | | | | 16mm² (Cv=1.67) | | | |
| Fluid | Air (to be filtered by 40μ filter element) | | | | | | | |
| Pressure | Working: 20–115 psi, (0.15–0.8 MPa), (1.5–8.0 bar); Proof: 215 psi, (1.48 MPa), (14.8 bar) | | | | | | | |
| Voltage | 24VDC single solenoid | 120VAC single solenoid | 24VDC double solenoid | 120VAC double solenoid | 24VDC single solenoid | 120VAC single solenoid | 24VDC double solenoid | 120VAC double solenoid |
| Power Consumption | DC: 3.0W AC: 3.5 VA; continuous duty (100% ED) | | | | | | | |
| Max Freq | 5 cycles/sec | | | | | | | |
| Insulation | B class | | | | | | | |
| Min Response | 0.05 sec | | | | | | | |
| Temperature | -5–60°C (23–140°F) | | | | | | | |
| Lubrication | Not Required | | | | | | | |
| Protection | IP65 (DIN40050) | | | | | | | |
| Connection | 11mm DIN Terminal | | | | | | | |
| Body | Aluminum Alloy | | | | | | | |
| Agency Approvals | Solenoid CE marked; RoHS | | | | | | | |

Dimensions

mm [inches]

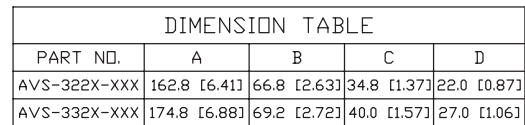
AVS-311x,
AVS-321x,
AVS-331x



| DIMENSION TABLE | | | | |
|-----------------|--------------|-------------|-------------|-------------|
| PART NO. | A | B | C | D |
| AVS-311X-XXX | 88.4 [3.48] | 54.6 [2.15] | 27.0 [1.06] | 18.0 [0.71] |
| AVS-321X-XXX | 109.0 [4.29] | 66.7 [2.63] | 35.0 [1.38] | 22.0 [0.87] |
| AVS-331X-XXX | 119.8 [4.72] | 69.1 [2.72] | 40.0 [1.57] | 27.0 [1.06] |

See our website www.AutomationDirect.com for complete Engineering drawings.

**AVS-322x,
AVS-332x**



Book 2 (14.3)
ePN-47



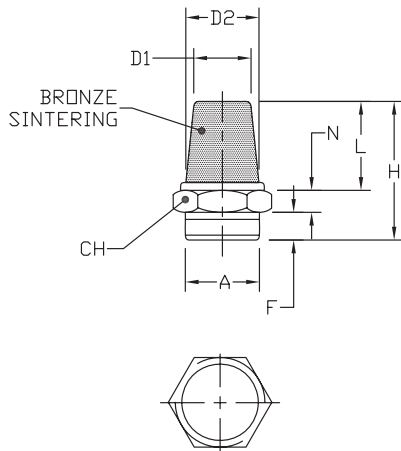
Exhaust Silencers

NITRA™ exhaust silencers are available in three styles and nine popular NPT and BSPT sizes. Add these to the exhaust ports of NITRA directional control solenoid valves to reduce noise.

Features

- Inch and metric sizes available
- Bronze cone and flat styles
- Plastic cylindrical
- Maximum pressure = 150 psi

SBC Silencers



SBC Series



SBF Series



SPL Series

| NITRA™ Bronze Cone Silencers | | | | | | | | | | | |
|--|--------|----------|-------------|-------------|-------------|-------------|-------------|-------------|-------------|---------------------|---------------|
| Inch Sizes - dimensions in inches [mm] | | | | | | | | | | | |
| Part No. | Price | A | CH | D1 | D2 | F | H | L | N | Package Weight (lb) | Qty. per pack |
| SBC-18N | \$2.50 | MNPT 1/8 | 0.47 [12.0] | 0.32 [8.0] | 0.28 [7.0] | 0.24 [6.0] | 0.94 [24.0] | 0.55 [14.0] | 0.16 [4.0] | 0.01 | 2 |
| SBC-14N | \$3.00 | MNPT 1/4 | 0.63 [16.0] | 0.47 [12.0] | 0.40 [10.0] | 0.32 [8.0] | 1.18 [30.0] | 0.71 [18.0] | 0.16 [4.0] | 0.01 | |
| SBC-38N | \$4.00 | MNPT 3/8 | 0.71 [18.0] | 0.55 [14.0] | 0.39 [11.0] | 0.35 [9.0] | 1.38 [35.0] | 0.83 [21.0] | 0.197 [5.0] | 0.05 | |
| SBC-12N | \$6.25 | MNPT 1/2 | 0.94 [24.0] | 0.75 [19.0] | 0.59 [15.0] | 0.40 [10.0] | 1.73 [44.0] | 1.10 [28.0] | 0.24 [6.0] | 0.15 | |
| Metric Sizes - dimensions in inches [mm] | | | | | | | | | | | |
| SBC-M5 | \$2.00 | M5 | 0.31 [8.0] | 0.20 [5.0] | 0.16 [4.0] | 0.20 [5.0] | 0.79 [20.0] | 0.47 [12.0] | 0.12 [3.0] | 0.01 | 2 |
| SBC-18R | \$2.50 | R 1/8 | 0.47 [12.0] | 0.32 [8.0] | 0.28 [7.0] | 0.24 [6.0] | 0.94 [24.0] | 0.55 [14.0] | 0.16 [4.0] | 0.01 | |
| SBC-14R | \$3.00 | R 1/4 | 0.63 [16.0] | 0.47 [12.0] | 0.40 [10.0] | 0.32 [8.0] | 1.18 [30.0] | 0.71 [18.0] | 0.16 [4.0] | 0.01 | |
| SBC-38R | \$4.00 | R 3/8 | 0.71 [18.0] | 0.55 [14.0] | 0.39 [11.0] | 0.35 [9.0] | 1.38 [35.0] | 0.83 [21.0] | 0.197 [5.0] | 0.05 | |
| SBC-12R | \$6.25 | R 1/2 | 0.94 [24.0] | 0.75 [19.0] | 0.59 [15.0] | 0.40 [10.0] | 1.73 [44.0] | 1.10 [28.0] | 0.24 [6.0] | 0.15 | |

Flow Characteristics

Bronze Cone Silencers

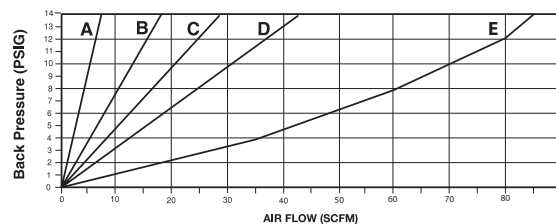
A: SBC-M5

B: SBC-18N; SBC-18R

C: SBC-14N; SBC-14R

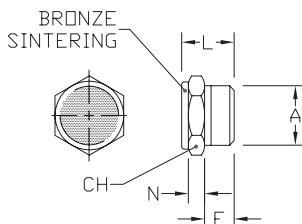
D: SBC-38N; SBC-38R

E: SBC-12N; SBC-12R



Noise Elimination = > 20db
Filtered Element = 40 micron

SBF Silencers



| NITRA™ Bronze Flat Silencers | | | | | | | | |
|--|--------|----------|----------------|----------------|----------------|---------------|---------------------|---------------|
| Inch Sizes - dimensions in inches [mm] | | | | | | | | |
| Part No. | Price | A | CH | F | L | N | Package Weight (lb) | Qty. per pack |
| SBF-18N | \$2.50 | MNPT 1/8 | 0.47 [12.0] | 0.24 [6.0] | 0.47 [12.0] | 0.16 [4.0] | 0.01 | 2 |
| SBF-14N | \$3.00 | MNPT 1/4 | 0.67 [17.0] | 0.32 [8.0] | 0.59 [15.0] | 0.16 [4.0] | 0.01 | |
| SBF-38N | \$4.00 | MNPT 3/8 | 0.75 [19.0] | 0.35 [9.0] | 0.67 [17.0] | 0.20 [5.0] | 0.05 | |
| SBF-12N | \$6.25 | MNPT 1/2 | 0.94 [24.0] | 0.40 [10.0] | 0.71 [18.0] | 0.24 [6.0] | 0.15 | |
| Metric Sizes - dimensions in inches [mm] | | | | | | | | |
| SBF-M5 | \$2.00 | M5 | 0.31 [8.0] | 0.20 [5.0] | 0.35 [9.0] | 0.12 [3.0] | 0.01 | 2 |
| SBF-18R | \$2.50 | R 1/8 | 0.47 [12.0] | 0.24 [6.0] | 0.47 [12.0] | 0.16 [4.0] | 0.01 | |
| SBF-14R | \$3.00 | R 1/4 | 0.67 [17.0] | 0.32 [8.0] | 0.59 [15.0] | 0.16 [4.0] | 0.01 | |
| SBF-38R | \$4.00 | R 3/8 | 0.75 [19.0] | 0.35 [9.0] | 0.67 [17.0] | 0.20 [5.0] | 0.05 | |
| SBF-12R | \$6.25 | R 1/2 | 0.94 [24.0] | 0.40 [10.0] | 0.71 [18.0] | 0.24 [6.0] | 0.15 | |



Exhaust Silencers

Flow Characteristics

Bronze Flat Silencers

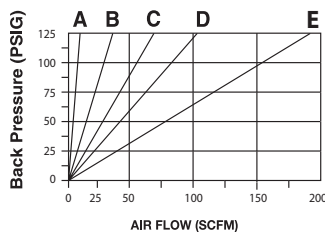
A: SBF-M5

B: SBF-18N; SBF-18R

C: SBF-14N; SBF-14R

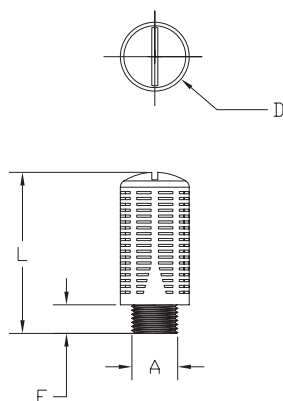
D: SBF-28N; SBF-38R

E: SBF-12N; SBF-12R



Noise Elimination = > 30db
Filtered Element = 40 micron

SPL Silencers



Note: SPL series plastic exhaust silencers have a maximum pressure of 150 PSI.

| NITRA™ Plastic Exhaust Silencers | | | | | | | |
|--|--------|----------|----------------|----------------|----------------|----------------------|---------------|
| Inch Sizes - dimensions in inches [mm] | | | | | | | |
| Part No. | Price | A | D | L | F | Package Weight (lbs) | Qty. per pack |
| SPL-18N | \$2.00 | MNPT 1/8 | 0.55 [13.8] | 1.28 [32.4] | 0.33 [8.3] | 0.02 | 2 |
| SPL-14N | \$2.25 | MNPT 1/4 | 0.68 [17.3] | 1.68 [42.5] | 0.39 [9.9] | 0.03 | |
| SPL-38N | \$2.50 | MNPT 3/8 | 0.87 [22.0] | 2.10 [53.4] | 0.40 [10.0] | 0.06 | |
| SPL-12N | \$2.50 | MNPT 1/2 | 1.00 [25.4] | 2.66 [67.6] | 0.44 [11.1] | 0.08 | |
| Metric Sizes - dimensions in inches [mm] | | | | | | | |
| SPL-18R | \$2.00 | R 1/8 | 0.60 [15.2] | 1.33 [33.7] | 0.24 [6.1] | 0.02 | 2 |
| SPL-14R | \$2.25 | R 1/4 | 0.60 [18.8] | 1.60 [40.6] | 0.31 [7.7] | 0.03 | |
| SPL-38R | \$2.50 | R 3/8 | 0.94 [24.0] | 2.20 [55.9] | 0.39 [9.9] | 0.06 | |
| SPL-12R | \$2.50 | R 1/2 | 0.94 [24.0] | 2.20 [55.9] | 0.39 [9.9] | 0.08 | |

Flow Characteristics

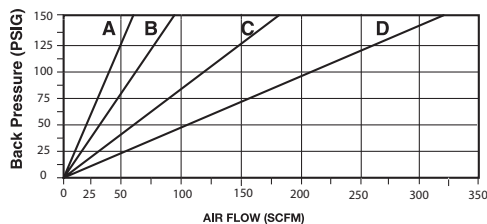
Plastic Silencers

A: SPL-18N; SPL-18R

B: SPL-14N; SPL-14R

C: SPL-38N; SPL-38R

D: SPL-12N; SPL-12R



Noise Elimination = > 30db
Filtered Element = 40 micron



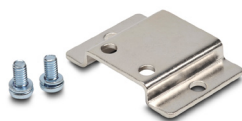
Pneumatic Directional Control Solenoid Valve Manifolds and Accessories



AM Series Manifolds



AM-52BP



AVP-31BKT



AVP-31KIT

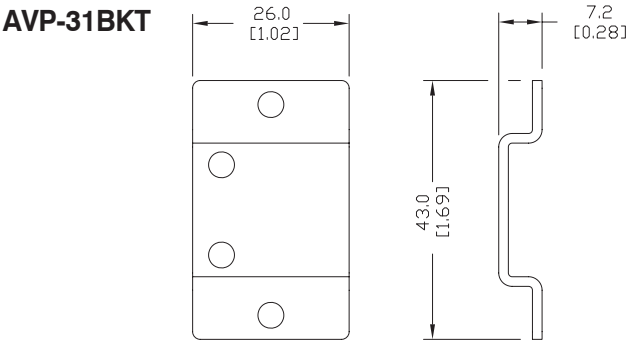
| Pneumatic Directional Control Solenoid Valve Series Accessories | | | |
|---|---------|---|-------------|
| Part No. | Price | Description | Weight (lb) |
| AM-512 | \$7.25 | NITRA pneumatic valve manifold, 5-port (4-way), 2-station, aluminum, for use with AVS-51 series directional control valves. Valve mounting screws and gaskets included. | 0.4 |
| AM-514 | \$12.75 | NITRA pneumatic valve manifold, 5-port (4-way), 4-station, aluminum, for use with AVS-51 series directional control valves. Valve mounting screws and gaskets included. | 0.6 |
| AM-516 | \$18.25 | NITRA pneumatic valve manifold, 5-port (4-way), 6-station, aluminum, for use with AVS-51 series directional control valves. Valve mounting screws and gaskets included. | 0.8 |
| AM-518 | \$25.50 | NITRA pneumatic valve manifold, 5-port (4-way), 8-station, aluminum, for use with AVS-51 series directional control valves. Valve mounting screws and gaskets included. | 1.1 |
| AM-51BP | \$4.00 | NITRA pneumatic blanking plate, plated steel, for use with AM-51 series manifolds. Mounting screws included. | 0.1 |
| AM-522 | \$10.00 | NITRA pneumatic valve manifold, 5-port (4-way), 2-station, aluminum, for use with AVS-52 series directional control valves. Valve mounting screws and gaskets included. | 0.5 |
| AM-524 | \$20.00 | NITRA pneumatic valve manifold, 5-port (4-way), 4-station, aluminum, for use with AVS-52 series directional control valves. Valve mounting screws and gaskets included. | 0.9 |
| AM-526 | \$30.50 | NITRA pneumatic valve manifold, 5-port (4-way), 6-station, aluminum, for use with AVS-52 series directional control valves. Valve mounting screws and gaskets included. | 1.2 |
| AM-528 | \$40.50 | NITRA pneumatic valve manifold, 5-port (4-way), 8-station, aluminum, for use with AVS-52 series directional control valves. Valve mounting screws and gaskets included. | 1.5 |
| AM-52BP | \$4.25 | NITRA pneumatic blanking plate, plated steel, for use with AM-54 series manifolds. Mounting screws included. | 0.1 |
| AM-532 | \$15.50 | NITRA pneumatic valve manifold, 5-port (4-way), 2-station, aluminum, for use with AVS-53 series directional control valves. Valve mounting screws and gaskets included. | 0.8 |
| AM-534 | \$30.00 | NITRA pneumatic valve manifold, 5-port (4-way), 4-station, aluminum, for use with AVS-53 series directional control valves. Valve mounting screws and gaskets included. | 1.4 |
| AM-536 | \$46.00 | NITRA pneumatic valve manifold, 5-port (4-way), 6-station, aluminum, for use with AVS-53 series directional control valves. Valve mounting screws and gaskets included. | 1.9 |
| AM-538 | \$60.00 | NITRA pneumatic valve manifold, 5-port (4-way), 8-station, aluminum, for use with AVS-53 series directional control valves. Valve mounting screws and gaskets included. | 2.5 |
| AM-53BP | \$4.25 | NITRA pneumatic blanking plate, plated steel, for use with AM-53 series manifolds. Mounting screws provided. | 0.1 |
| AM-542 | \$16.50 | NITRA pneumatic valve manifold, 5-port (4-way), 2-station, aluminum, for use with AVS-54 series directional control valves. Valve mounting screws and gaskets included. | 1.7 |
| AM-544 | \$33.50 | NITRA pneumatic valve manifold, 5-port (4-way), 4-station, aluminum, for use with AVS-54 series directional control valves. Valve mounting screws and gaskets included. | 2.8 |
| AM-546 | \$52.00 | NITRA pneumatic valve manifold, 5-port (4-way), 6-station, aluminum, for use with AVS-54 series directional control valves. Valve mounting screws and gaskets included. | 4.0 |
| AM-548 | \$62.00 | NITRA pneumatic valve manifold, 5-port (4-way), 8-station, aluminum, for use with AVS-54 series directional control valves. Valve mounting screws and gaskets included. | 5.2 |
| AM-54BP | \$4.00 | NITRA pneumatic blanking plate, plated steel, for use with AM-54 series manifolds. Mounting screws included. | 0.1 |
| AVP-31BKT | \$1.00 | NITRA pneumatic individual mounting bracket for use with AVP-31 series directional control valves. | 0.1 |
| AVP-31KIT | \$1.75 | NITRA pneumatic stacking screw kit for use with AVP-31 directional control valves. One kit is required for each additional AVP-31 valve added to the stack. | 0.1 |



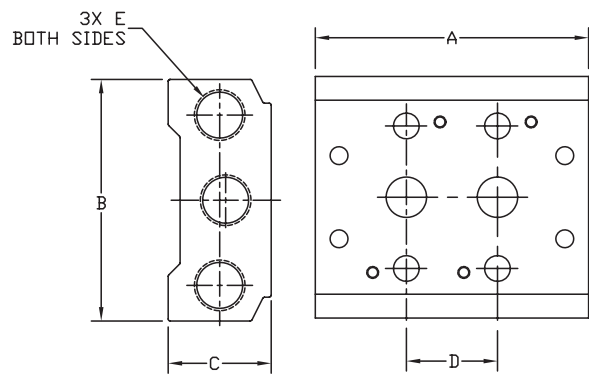
Pneumatic Directional Control Solenoid Valve Manifolds and Accessories

Dimensions

mm [inches]



AM 51 Series Manifolds



| MANIFOLD DIMENSIONS | | | | | |
|---------------------|---------------|--------------|-------------|-----------------|---------|
| PART NO. | A | B | C | D | E |
| AM-512 | 57.0 [2.24] | 58.0 [2.28] | 25.0 [0.98] | 19.0 [0.75]* | 1/4 NPT |
| AM-514 | 95.0 [3.74] | | | 3X 19.0 [0.75]* | |
| AM-516 | 133.0 [5.24] | | | 5X 19.0 [0.75]* | |
| AM-518 | 171.0 [6.73] | | | 7X 19.0 [0.75]* | |
| AM-522 | 69.0 [2.72] | 61.0 [2.40] | 26.0 [1.02] | 23.0 [0.91] | 1/4 NPT |
| AM-524 | 115.0 [4.53] | | | 3X 23.0 [0.91] | |
| AM-526 | 161.0 [6.34] | | | 5X 23.0 [0.91] | |
| AM-528 | 207.0 [8.15] | | | 7X 23.0 [0.91] | |
| AM-532 | 82.0 [3.23] | 75.0 [2.95] | 30.0 [1.19] | 28.0 [1.10] | 3/8 NPT |
| AM-534 | 138.0 [5.46] | | | 3X 28.0 [1.10] | |
| AM-536 | 194.0 [7.64] | | | 5X 28.0 [1.10] | |
| AM-538 | 250.0 [9.84] | | | 7X 28.0 [1.10] | |
| AM-542 | 98.0 [3.86] | 104.0 [4.09] | 38.0 [1.50] | 35.0 [1.38] | 1/2 NPT |
| AM-544 | 168.0 [6.61] | | | 3X 35.0 [1.38] | |
| AM-546 | 238.0 [9.37] | | | 5X 35.0 [1.38] | |
| AM-548 | 308.0 [12.13] | | | 7X 35.0 [1.38] | |

* Exhaust holes have 1mm offset from spacing centerline.

See our website www.AutomationDirect.com for complete Engineering drawings.

Solenoid Valve Cables and Connectors



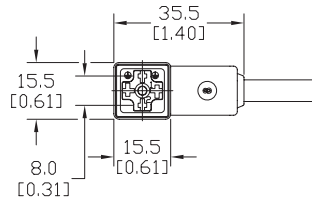
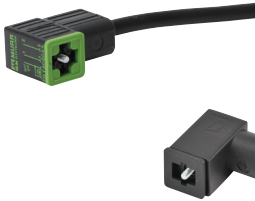
These high quality connectors and over-molded cables help reduce wiring time. The lower voltage models, 24V or 110V AC/DC, include built-in surge suppression, Yellow LED indicator and are rated for connecting with electronics. The 230V AC/DC models are rated for straight wired products. All models are available in five sizes based on DIN 43650.

Features

- 8mm, 9.4mm, 10mm, 11mm and 18mm square DIN styles
- Fits most popular solenoid valves and sensors
- Suppression and LED indication available in 24V or 110V AC/DC models
- PVC jacketed cables in 1, 3 or 5 meter lengths on select connectors
- Field wireable connectors on select models
- Polarity insensitive (follow solenoid, sensor, or other devices wiring diagram)

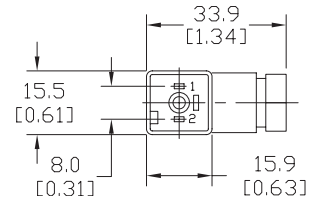
8mm Connectors

Dimensions shown
mm [inches]



Height = 25mm [0.98in]

Connector with Cable



Height = 26mm [1.02]

Field Wireable Connector

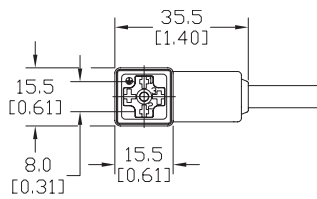
| 8mm (3-pole) Connectors (per DIN 43650 Form C) | | | | | | | | | | | | |
|--|---------|-----------------|----------------|-----------|---|----------------------------|-----|----------------------------------|---------------|---------------------------------------|--------------|--------------------|
| Part No. | Price | Voltage (AC/DC) | Current Rating | IP Rating | Wire Size | Cable Dia. (in.) | LED | Surge Protection | Wiring Figure | Screw Size/Torque | Weight (lbs) | Agency Approval |
| SC8-LS24-3 | \$11.00 | 24 ±20% | max 4A | 67 | 18 AWG | 0.23 | yes | zener diode (D-Z DO-15 47V 2W) | 1 | m2.5-0.45x25mm/ 0.4 Nm (3.5 in lb) | 0.40 | CSA (080128-0-000) |
| SC8-LS24-5 | \$13.00 | | | | | | | zener diode (D-Z DO-15 47V 2W) | 7 | | 0.65 | |
| SC8-LS110-3 | \$13.50 | 110 ±10% | max 4A | 67 | 18 AWG | 0.23 | yes | zener diode (D-Z DO-41 ZY200 2W) | 7 | m2.5-0.45x25mm/ 0.5 Nm (4.4 in lb) | 0.41 | CSA (080128-0-000) |
| SC8-LS110-5 | \$16.00 | | | | | | | zener diode (D-Z DO-41 ZY200 2W) | 7 | | 0.63 | |
| SC8-3 | \$9.75 | 230 | max 6A | 65 | Solid 12 AWG Stranded 14 AWG w/Ferrule 16 AWG | gland size 0.20 to 0.24 | no | none | 2 | m2.5-0.45x25mm/ 0.5 Nm (4.4 in lb) | 0.39 | none |
| SC8-0 | \$5.00 | | | | | | | | 9 | | 0.10 | |
| SC8-1 | \$9.75 | | | | | | | | 9 | | 0.10 | |
| SC8-5 | \$12.00 | | | | | | | | 2 | | 0.68 | |

Please note: The above parts are not compatible with the AVP and AVS series valves, which have 11mm DIN plugs.

Last digit in part number denotes cable length in meters, a 0 indicates field termination.

8mm Transmitter Connector

Dimensions shown
mm [inches]



Height = 25mm [0.98in]

Connector with Cable

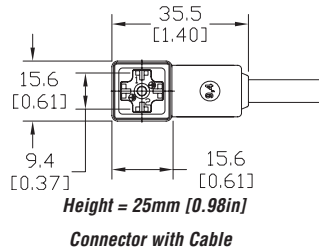
| 8mm (4-pole) Connectors (per DIN 43650 Form C) | | | | | | | | | | | | |
|--|---------|-----------------|----------------|-----------|-----------|------------------|-----|------------------|---------------|------------------------------------|--------------|--------------------|
| Part No. | Price | Voltage (AC/DC) | Current Rating | IP Rating | Wire Size | Cable Dia. (in.) | LED | Surge Protection | Wiring Figure | Screw Size/Torque | Weight (lbs) | Agency Approval |
| SC8-5T | \$17.00 | 230 | max 6A | 67 | 18 AWG | 0.26 | yes | none | 8 | m3-0.5x42mm/ 0.5 Nm (4.4 in lb) | 0.80 | CSA (080128-0-000) |

Last digit in part number denotes cable length in meters, a 0 indicates field termination.

Solenoid Valve Cables and Connectors

9.4mm Connectors

Dimensions shown
mm [inches]



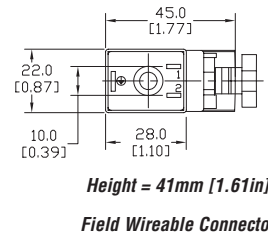
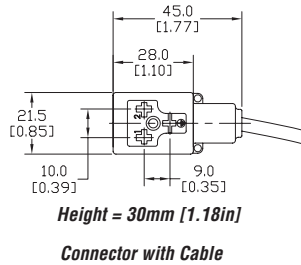
9.4mm (3-pole) Connectors (DIN Style, Form C Industrial)

| Part No. | Price | Voltage (AC/DC) | Current Rating | IP Rating | Wire Size | Cable Dia. (in.) | LED | Surge Protection | Wiring Figure | Screw Size/ Torque | Weight (lbs) | Agency Approval |
|-------------|---------|-----------------|----------------|-----------|-----------|------------------|-----|----------------------------------|---------------|------------------------------------|--------------|--------------------|
| SC9-LS24-3 | \$11.00 | 24 ±20% | max 4A | 67 | 18 AWG | 0.23 | yes | zener diode (D-Z DO-15 47V 2W) | 1 | m3-0.5x26mm/ 0.4 Nm (3.5 in lb) | 0.40 | CSA (080128-0-000) |
| SC9-LS24-5 | \$13.00 | | | | | | | | | | 0.64 | |
| SC9-LS110-3 | \$13.50 | 110 ±10% | | | | | | zener diode (D-Z DO-41 ZY200 2W) | 7 | | 0.40 | |
| SC9-LS110-5 | \$16.00 | | | | | | | | 0.64 | | | |
| SC9-3 | \$9.75 | 230 | max 6A | | | | no | none | 2 | m3-0.5x26mm/ 0.5 Nm (4.4 in lb) | 0.40 | none |
| SC9-5 | \$12.00 | | | | | | | | | | 0.64 | |

Please note: The above parts are not compatible with the AVP and AVS series valves, which have 11mm DIN plugs.
Last digit in part number denotes cable length in meters.

10mm Connectors

Dimensions shown
mm [inches]



10mm (3-pole) Connectors (per DIN 43650 Form B)

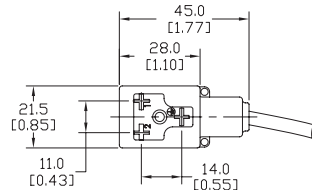
| Part No. | Price | Voltage (AC/DC) | Current Rating | IP Rating | Wire Size | Cable Dia. (in.) | LED | Surge Protection | Wiring Figure | Screw Size/ Torque | Weight (lbs) | Agency Approval |
|--------------|---------|-----------------|----------------|-----------|---|-------------------------|-----|----------------------------------|---------------|------------------------------------|--------------|--------------------|
| SC10-LS24-3 | \$11.00 | 24 ±20% | max 4A | 67 | 18 AWG | 0.23 | yes | zener diode (D-Z DO-15 47V 2W) | 10 | m3-0.5x30mm/ 0.4 Nm (3.5 in lb) | 0.43 | CSA (080128-0-000) |
| SC10-LS24-5 | \$13.00 | | | | | | | | | | 0.68 | |
| SC10-LS110-3 | \$13.50 | 110 ±10% | max 1A | | | | | zener diode (D-Z DO-41 ZY200 2W) | 6 | | 0.43 | |
| SC10-LS110-5 | \$16.00 | | | | | | | 0.68 | | | | |
| SC10-3 | \$9.75 | 230 | max 10A | | | | no | none | 3 | | 0.43 | |
| SC10-5 | \$12.00 | | | | | | | | | | 0.68 | |
| SC10-LS24-0 | \$9.50 | 24 ±20% | max 4A | 65 | Solid 12 AWG Stranded 14 AWG w/Ferrule 16 AWG | gland size 0.24 to 0.32 | yes | zener diode (D-Z DO-15 47V 2W) | 4 | m3-0.5x42mm/ 0.5 Nm (4.4 in lb) | 0.07 | none |
| SC10-LS110-0 | \$10.00 | 110 ±10% | max 1A | | | | | mov (SIOV S10 K130) | 5 | | 0.07 | |
| SC10-0 | \$7.50 | 230 | max 10A | | | | no | none | 9 | | 0.06 | |

Please note: The above parts are not compatible with the AVP and AVS series valves, which have 11mm DIN plugs.
Last digit in part number denotes cable length in meters, a 0 indicates field termination.

Solenoid Valve Cables and Connectors

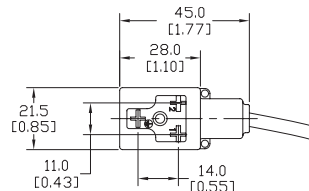
11mm Connectors

Dimensions shown
mm [inches]



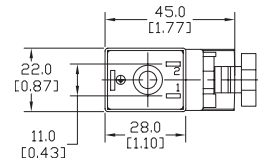
Height = 30mm [1.18in]

Connector with Cable



Height = 30mm [1.18in]

Reverse Connector with Cable



Height = 41mm [1.61in]

Field Wireable Connector

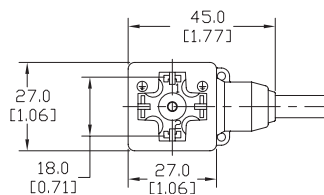
11mm (3-pole) Connectors (DIN Style, Form B Industrial)

| Part No. | Price | Voltage (AC/DC) | Current Rating | IP Rating | Wire Size | Cable Dia. (in) | LED | Surge Protection | Wiring Figure | Screw Size/ Torque | Weight (lbs) | Agency Approval | | | | |
|---------------|---------|-----------------|----------------|-----------|--------------------------------|-----------------|----------------------------------|--|-------------------------|------------------------------------|--------------|--------------------|------|---|------|------|
| SC11-LS24-3 | \$11.00 | 24 ±20% | max 4A | 67 | 18 AWG | 0.23 | yes | zener diode (D-Z DO-15 47V 2W) | 10 | m3-0.5x30mm/ 0.4 Nm (3.5 in lb) | 0.44 | CSA (080128-0-000) | | | | |
| SC11-LS24-5 | \$13.00 | | | | | | | zener diode (D-Z DO-41 ZY200 2W) | 6 | | 0.67 | | | | | |
| SC11-LS110-3 | \$13.50 | 110 ±10% | max 1A | | | | | zener diode (D-Z DO-15 47V 2W) | 10 | | 0.44 | | | | | |
| SC11-LS110-5 | \$16.00 | | | | | | | zener diode (D-Z DO-41 ZY200 2W) | 6 | | 0.67 | | | | | |
| SC11-LS24-3R | \$11.00 | 24 ±20% | max 4A | | | | | zener diode (D-Z DO-15 47V 2W) | 10 | | 0.44 | | | | | |
| SC11-LS24-5R | \$13.00 | | | | | | | zener diode (D-Z DO-41 ZY200 2W) | 6 | | 0.67 | | | | | |
| SC11-LS110-3R | \$13.50 | 110 ±10% | max 1A | | | | zener diode (D-Z DO-15 47V 2W) | 10 | 0.44 | | | | | | | |
| SC11-LS110-5R | \$16.00 | | | | | | zener diode (D-Z DO-41 ZY200 2W) | 6 | 0.67 | | | | | | | |
| SC11-3 | \$9.75 | 230 | max 10A | | | | 65 | Solid 12 AWG Stranded 14 AWG w/Ferrule 16 AWG | gland size 0.24 to 0.32 | | no | | none | 3 | 0.44 | none |
| SC11-5 | \$12.00 | | | | | | | | | | 0.07 | | | | | |
| SC11-LS24-0 | \$9.50 | 24 ±20% | max 4A | yes | zener diode (D-Z DO-15 47V 2W) | 4 | | | | m3-0.5x42mm/ 0.5 Nm (4.4 in lb) | 0.07 | 0.07 | | | | |
| SC11-LS110-0 | \$10.00 | 110 ±10% | max 1A | | mov (SIOV S10 K130) | 5 | | | | | | | | | | |
| SC11-0 | \$7.50 | 230 | max 10A | | no | none | 9 | | | | | | | | | |

Last digit in part number denotes cable length in meters, a 0 indicates field termination.

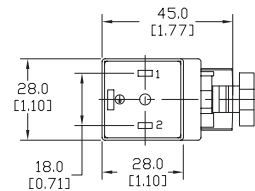
18mm Connectors

Dimensions shown
mm [inches]



Height = 30mm [1.18in]

Connector with Cable



Height = 41mm [1.61in]

Field Wireable Connector

18mm (3-pole) Connectors (per DIN 43650 Form A)

| Part No. | Price | Voltage (AC/DC) | Current Rating | IP Rating | Wire Size | Cable Dia. (in) | LED | Surge Protection | Wiring Figure | Screw Size/ Torque | Weight (lbs) | Agency Approval | |
|--------------|---------|-----------------|----------------|-----------|---|-------------------------|-----|----------------------------------|---------------|---------------------------------|--------------|--------------------|------|
| SC18-LS24-3 | \$11.00 | 24 ±20% | max 4A | 67 | 18 AWG | 0.23 | yes | zener diode (D-Z DO-15 47V 2W) | 7 | m3-0.5x30mm/ 0.4 Nm (3.5 in lb) | 0.44 | CSA (080128-0-000) | |
| SC18-LS24-5 | \$13.00 | | | | | | | zener diode (D-Z DO-41 ZY200 2W) | | | 0.69 | | |
| SC18-LS110-3 | \$13.50 | 110 ±10% | max 1A | | | | | zener diode (D-Z DO-15 47V 2W) | | | 2 | | 0.44 |
| SC18-LS110-5 | \$16.00 | | | | | | | zener diode (D-Z DO-41 ZY200 2W) | | | | | 0.69 |
| SC18-3 | \$9.75 | 230 | max 10A | | | | no | none | 0.44 | | | | |
| SC18-5 | \$12.00 | | | | | | | none | | | 0.69 | | |
| SC18-LS24-0 | \$9.50 | 24 ±20% | max 4A | 65 | Solid 12 AWG Stranded 14 AWG w/Ferrule 16 AWG | gland size 0.24 to 0.32 | yes | zener diode (D-Z DO-15 47V 2W) | 4 | m3-0.5x42mm/ 0.5 Nm (4.4 in lb) | 0.07 | none | |
| SC18-LS110-0 | \$10.00 | 110 ±10% | max 1A | | | | | mov (SIOV S10 K130) | 5 | | 0.07 | | |
| SC18-0 | \$7.50 | 230 | max 10A | | | | no | none | 9 | | 0.07 | | |

Please note: The above parts are not compatible with the AVP and AVS series valves, which have 11mm DIN plugs.

Last digit in part number denotes cable length in meters, a 0 indicates field termination.

Solenoid Valve Cables and Connectors Wiring Diagrams

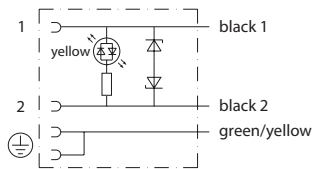


Figure No. 1

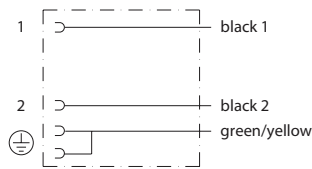


Figure No. 2

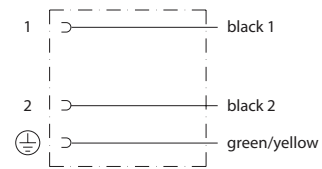


Figure No. 3

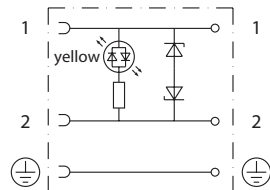


Figure No. 4

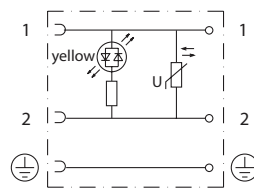


Figure No. 5

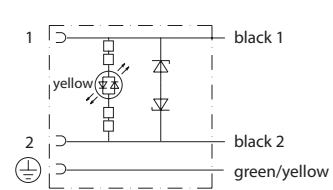


Figure No. 6

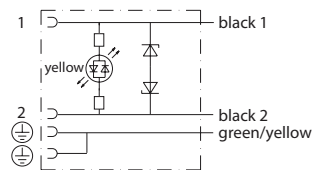


Figure No. 7

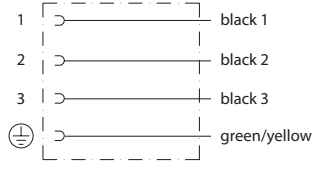


Figure No. 8

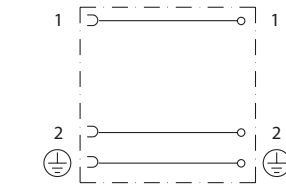


Figure No. 9

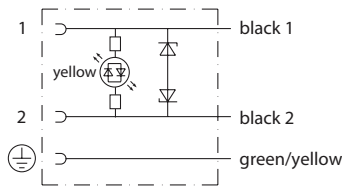


Figure No. 10