



C-Series Pneumatic Cylinders Accessories

| C-Series Pneumatic Cylinder Accessories | | | | |
|---|--|---------|---------|---------|
| Part Number | Description | Pcs/Pkg | Wt (lb) | Price |
| CCB-17 | Clevis bracket, anodized aluminum, stainless steel pin, for use with CRP-09, CRP-12 or CRP-17 Rod Eyes | 1 | 0.20 | \$17.50 |
| CCB-40 | Clevis bracket, anodized aluminum, stainless steel pin, for use with CRP-24 or CRP-40 Rod Eyes | 1 | 0.30 | \$25.50 |
| CCB-48 | Clevis bracket, anodized aluminum, stainless steel pin, for use with CRP-48 Rod Eye | 1 | 0.40 | \$32.50 |
| CRP-09 | Rod eye, #8-32 UNC threads, zinc plated, high strength, heat treated alloy steel, bronze pivot bushing and nut for use with 9/16 inch bore NITRA C-series compact cylinders | 1 | 0.10 | \$11.00 |
| CRP-12 | Rod eye, #10-32 UNF threads, zinc plated, high strength, heat treated alloy steel, bronze pivot bushing and nut for use with 3/4 inch bore NITRA C-series compact cylinders | 1 | 0.10 | \$12.50 |
| CRP-17 | Rod eye, 5/16-24 UNF threads, zinc plated, high strength, heat treated alloy steel, bronze pivot bushing and nut for use with 1-1/16 inch bore NITRA C-series compact cylinders | 1 | 0.20 | \$12.00 |
| CRP-24 | Rod eye, 3/8-24 UNF threads, zinc plated, high strength, heat treated alloy steel, bronze pivot bushing and nut for use with 1-1/2 inch bore NITRA C-series compact cylinders | 1 | 0.30 | \$13.00 |
| CRP-40 | Rod eye, 1/2-20 UNF threads, zinc plated, high strength, heat treated alloy steel, bronze pivot bushing and nut for use with 2 or 2-1/2 inch bore NITRA C-series compact cylinders | 1 | 0.40 | \$13.00 |
| CRP-48 | Rod eye, 5/8-18 UNF threads, zinc plated, high strength, heat treated alloy steel, bronze pivot bushing and nut for use with 3 inch bore NITRA C-series compact cylinders | 1 | 0.50 | \$15.00 |

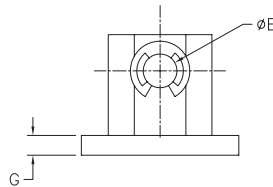
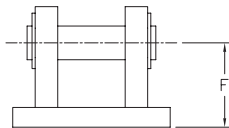
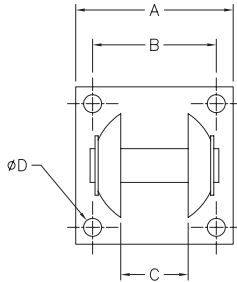


Photo shows C-series pneumatic cylinder with optional clevis bracket and rod eye.

CCB Clevis Brackets



Part No. CCB-40



Dimensions inches [mm]

| PART NUMBER | A | B | C | D | E | F | G |
|-------------|----------------|----------------|----------------|---------------|----------------|----------------|---------------|
| CCB-17 | 1.00 [25.4] | 0.75 [19.1] | 0.39 [9.9] | #6 | 0.19 [4.8] | 0.56 [14.2] | 0.16 [4.1] |
| CCB-40 | 1.75 [44.5] | 1.38 [35.1] | 0.75 [19.1] | #10 | 0.38 [9.7] | 0.94 [23.9] | 0.22 [5.6] |
| CCB-48 | 2.50 [63.5] | 2.00 [50.8] | 1.00 [25.4] | 0.25 [6.4] | 0.63 [16.0] | 1.25 [31.8] | 0.25 [6.4] |

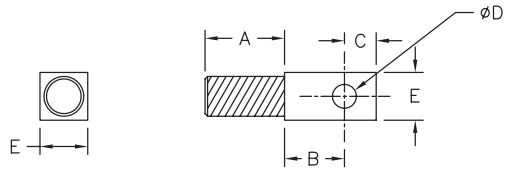


C-Series Pneumatic Cylinders Accessories

CRP Rod Eyes



Part No. CRP-24



| PART NUMBER | CYLINDER BORE SIZE | THREAD SIZE | A | B | C | ØD | E |
|-------------|--------------------|-------------|----------------|----------------|----------------|----------------|----------------|
| CRP-09 | 9/16" [14.3] | #8-32 UNC | 0.38 [9.6] | 0.47 [11.9] | 0.25 [6.4] | 0.19 [4.8] | 0.38 [9.6] |
| CRP-12 | 3/4" [19.1] | #10-32 UNF | 0.38 [9.6] | 0.47 [11.9] | 0.25 [6.4] | 0.19 [4.8] | 0.38 [9.6] |
| CRP-17 | 1 1/16" [27.0] | 5/16-24 UNF | 0.63 [16.0] | 0.47 [11.9] | 0.25 [6.4] | 0.19 [4.8] | 0.38 [9.6] |
| CRP-24 | 1 1/2" [38.1] | 3/8-24 UNF | 0.63 [16.0] | 0.72 [18.3] | 0.44 [11.2] | 0.38 [9.6] | 0.75 [19.1] |
| CRP-40 | 2.00" [50.8] | 1/2-20 UNF | 0.75 [19.1] | 0.72 [18.3] | 0.44 [11.2] | 0.38 [9.6] | 0.75 [19.1] |
| CRP-40 | 2 1/2" [63.5] | 1/2-20 UNF | 0.75 [19.1] | 0.72 [18.3] | 0.44 [11.2] | 0.38 [9.6] | 0.75 [19.1] |
| CRP-48 | 3.00" [76.2] | 5/8-18 UNF | 0.88 [22.4] | 1.00 [25.4] | 0.63 [16.0] | 0.63 [16.0] | 1.00 [25.4] |

Dimensions inches [mm]



CPS Series Cylinder Position Switches

| Position Switch Cross Reference Chart | | | |
|---------------------------------------|--|---------------|---------------------|
| NITRA Switch Type | Cylinder Brand (may fit some of these cylinders) | Photo Example | Groove Illustration |
| CPS CPSF | NITRA A-Series, D-Series, F-Series | | |
| CPS9C | DE-STA-CO Robohand SMC Compact Air | | |
| CPS9D | Fabco Numatics Rotomation | | |
| CPS9F | NITRA G-Series Fabco Festo Numatics Rotomation | | |
| CPS9H | NITRA E-Series NITRA H-Series | | |
| CPS9M | Norgren | | |
| CPS9Q | NITRA G-Series Parker | | |
| CPS9T | SMC | | |