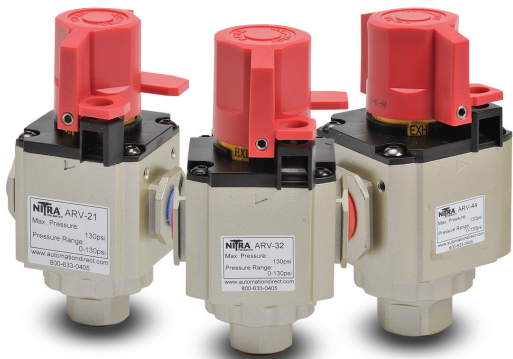




# Pneumatic Air Preparation - ARV Series Manual Shut-off Pressure Relief Valves



ARV-21

ARV-32

ARV-44



Mounting bracket included.



Modular Assembly Example

NITRA® pneumatic manual shut-off pressure relief valves are available with 1/8", 1/4", 3/8" or 1/2" female port sizes to meet a broad range of pneumatic air supply applications. The three-way, two-position (3 threaded ports) design is used to shut off upstream pressure and relieve downstream pressure. The manually rotated knob can be locked out with the included padlock.

Provided with a mounting bracket for stand-alone applications, the modular design also enables easy field assembly with NITRA pneumatic filters, regulators and lubricators (using modular assembly brackets purchased separately).

## Features

- 1/8", 1/4", 3/8", and 1/2" NPT female port sizes
- Three-way, two-position (3 threaded ports) design is used to shut off upstream pressure and relieve down-stream pressure
- Manually rotated knob can be locked out with the provided padlock
- Mounting bracket provided for stand-alone applications
- Modular design enables easy field assembly with NITRA filters, regulators, lubricators and combination filter regulators
- 2 year warranty



Manual Shut-off Relief Valve



See [www.AutomationDirect.com](http://www.AutomationDirect.com) for a wide variety of fitting options

ARV Series Valves											
Part No.	Price	Weight (lbs)	Port Size	Fluid	Acting Type	Valve Type	Temperature	Operating Pressure	Maximum Pressure	Proof Pressure	Operation Angle
ARV-21	\$21.50	0.6	1/8"	Air	Manual	3 way 2 position (3 threaded ports)	-5-60°C (23-140°F)	20-130psi (0.15-0.90 MPa) (1.5-9.0 bar)	130psi (0.90MPa) (9.0 bar)	215psi (1.5MPa) (15 bar)	90°
ARV-22	\$21.50	0.6	1/4"								
ARV-32	\$24.50	1.3	1/4"								
ARV-33	\$24.50	1.3	3/8"								
ARV-44	\$32.50	2.1	1/2"								

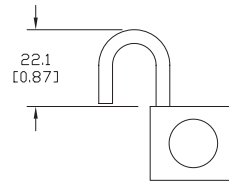
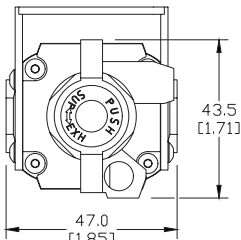
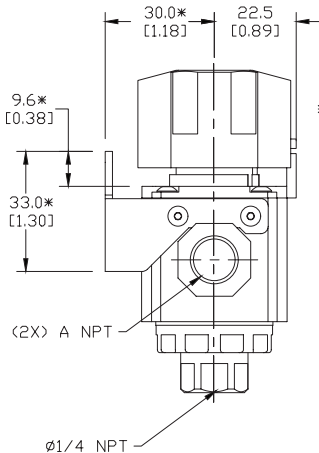
\*MOUNTING BRACKET INSTALLATION OPTIONAL

## Dimensions

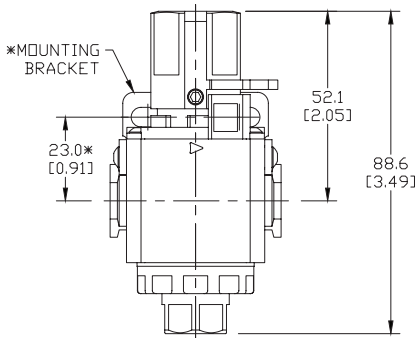
mm [inches]

ARV-2x

PART NO.	A NPT
ARV-21	1/8
ARV-22	1/4



Note: lock included with valve



Note: Unit dimensions are the same for listed models, port NPT varies based on model. See our Web site [www.AutomationDirect.com](http://www.AutomationDirect.com) for complete Engineering drawings.



# Pneumatic Air Preparation - ARV Series Manual Shut-off Pressure Relief Valves

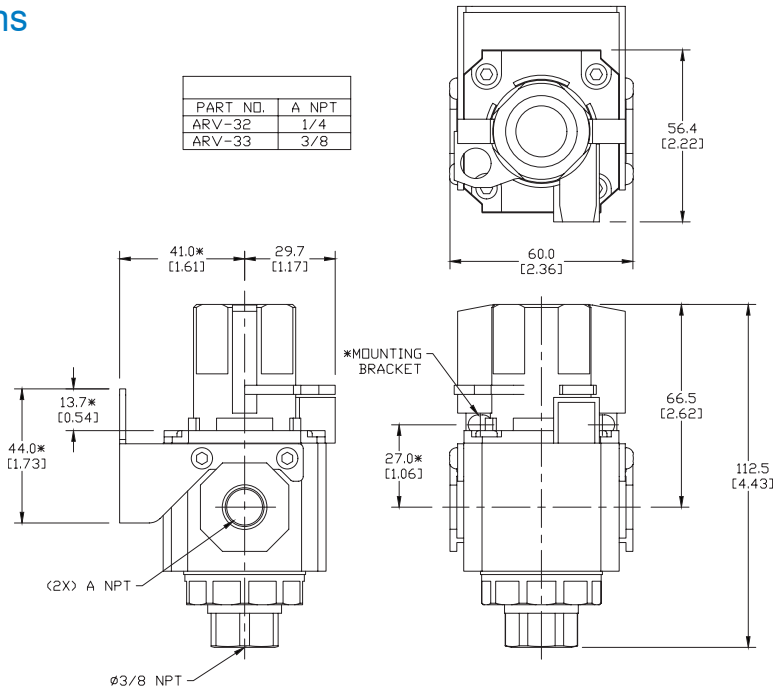
## Dimensions

mm [inches]

ARV-3x

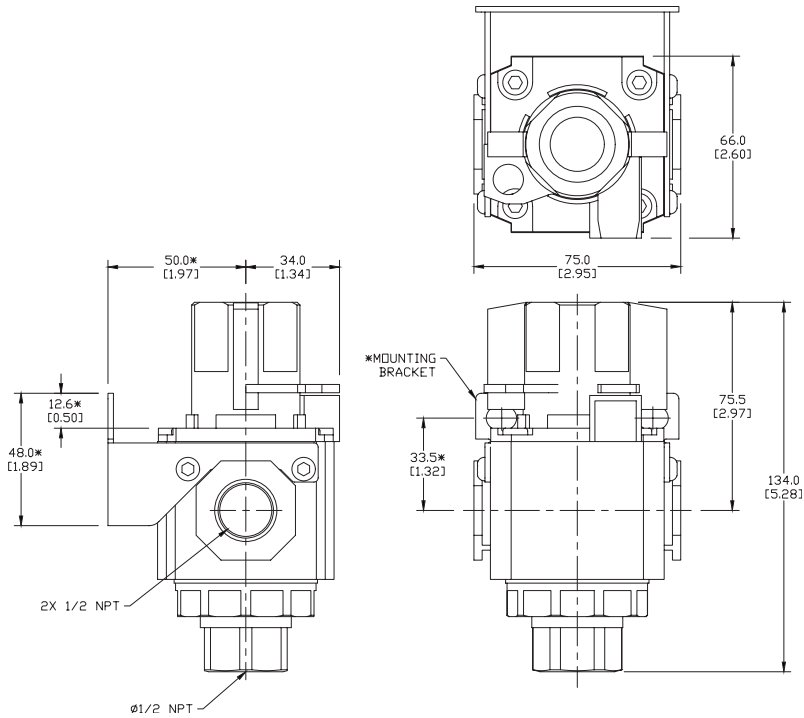
\*MOUNTING BRACKET INSTALLATION OPTIONAL

PART NO.	A NPT
ARV-32	1/4
ARV-33	3/8



ARV-4x

\*MOUNTING BRACKET INSTALLATION OPTIONAL



**Note:** Unit dimensions are the same for listed models, port NPT varies based on model.

See our Web site [www.AutomationDirect.com](http://www.AutomationDirect.com) for complete Engineering drawings.



# Pneumatic Air Preparation Accessories

Pneumatic Air Preparation Accessories			
Part No.	Price	Description	Weight (lbs)
<b>AGP-21</b>	\$5.75	NITRA pneumatic gauge port adapter plate, 1/8 inch NPT female port, with mounting screws. Easy field assembly with NITRA pneumatic AR-2 series regulators and AFR-2 series filter / regulators.	0.03
<b>AGP-32</b>	\$5.75	NITRA pneumatic gauge port adapter plate, 1/4 inch NPT female port, with mounting screws. Easy field assembly with NITRA pneumatic AR-3, AR-4 and AR-6 series regulators and AFR-3, AFR-4 and AFR-6 series filter / regulators.	0.04
<b>ADB-21</b>	\$11.00	NITRA pneumatic distribution block with four (4) 1/8 inch NPT female ports. Modular design enables easy field assembly with NITRA pneumatic AF-21 series filters, AR-21 series regulators, AL-21 series lubricators and AFR-21 series filter / regulators.	0.1
<b>ADB-22</b>	\$11.00	NITRA pneumatic distribution block with four (4) 1/4 inch NPT female ports. Modular design enables easy field assembly with NITRA pneumatic AF-22 series filters, AR-22 series regulators, AL-22 series lubricators and AFR-22 series filter / regulators.	0.1
<b>ADB-32</b>	\$15.00	NITRA pneumatic distribution block with four (4) 1/4 inch NPT female ports. Modular design enables easy field assembly with NITRA pneumatic AF-32 series filters, AR-32 series regulators, AL-32 series lubricators and AFR-32 series filter / regulators.	0.2
<b>ADB-33</b>	\$15.00	NITRA pneumatic distribution block with four (4) 3/8 inch NPT female ports. Modular design enables easy field assembly with NITRA pneumatic AF-33 series filters, AR-33 series regulators, AL-33 series lubricators and AFR-33 series filter / regulators.	0.2
<b>ADB-44</b>	\$16.50	NITRA pneumatic distribution block with four (4) 1/2 inch NPT female ports. Modular design enables easy field assembly with NITRA pneumatic AF-44 series filters, AR-44 series regulators, AL-44 series lubricators and AFR-44 series filter / regulators.	0.4
<b>AB-2T</b>	\$8.00	NITRA pneumatic modular assembly and mounting T-bracket with two mounting tangs, used to assemble and mount individual NITRA AF-2 series filters, AR-2 series regulators, AL-2 series lubricators and AFR-2 series filter/regulators as a combined unit	0.2
<b>AB-2L</b>	\$8.00	NITRA pneumatic modular assembly and mounting L-bracket with one mounting tang, used to assemble and mount individual NITRA AF-2 series filters, AR-2 series regulators, AL-2 series lubricators and AFR-2 series filter/regulators as a combined unit	0.2
<b>AB-2U</b>	\$8.00	NITRA pneumatic modular assembly U-bracket (no mounting tangs), used to assemble individual NITRA AF-2 series filters, AR-2 series regulators, AL-2 series lubricators and AFR-2 series filter/regulators as a combined unit	0.1
<b>AB-3T</b>	\$9.00	NITRA pneumatic modular assembly and mounting T-bracket with two mounting tangs, used to assemble and mount individual NITRA AF-3 series filters, AR-3 series regulators, AL-3 series lubricators and AFR-3 series filter/regulators as a combined unit	0.3
<b>AB-3L</b>	\$9.00	NITRA pneumatic modular assembly and mounting L-bracket with one mounting tang, used to assemble and mount individual NITRA AF-3 series filters, AR-3 series regulators, AL-3 series lubricators and AFR-3 series filter/regulators as a combined unit	0.3
<b>AB-3U</b>	\$9.00	NITRA pneumatic modular assembly U-bracket (no mounting tangs), used to assemble individual NITRA AF-3 series filters, AR-3 series regulators, AL-3 series lubricators and AFR-3 series filter/regulators as a combined unit	0.2
<b>AB-4T</b>	\$10.50	NITRA pneumatic modular assembly and mounting T-bracket with two mounting tangs, used to assemble and mount individual NITRA AF-4 series filters, AR-4 series regulators, AL-4 series lubricators and AFR-4 series filter/regulators as a combined unit	0.5
<b>AB-4L</b>	\$10.50	NITRA pneumatic modular assembly and mounting L-bracket with one mounting tang, used to assemble and mount individual NITRA AF-4 series filters, AR-4 series regulators, AL-4 series lubricators and AFR-4 series filter/regulators as a combined unit	0.5
<b>AB-4U</b>	\$10.50	NITRA pneumatic modular assembly U-bracket (no mounting tangs), used to assemble individual NITRA AF-4 series filters, AR-4 series regulators, AL-4 series lubricators and AFR-4 series filter/regulators as a combined unit	0.4
<b>AB-6T</b>	\$15.50	NITRA pneumatic modular assembly and mounting T-bracket with two mounting tangs, used to assemble and mount individual NITRA AF-6 series filters, AR-6 series regulators, AL-6 series lubricators and AFR-6 series filter/regulators as a combined unit	1.3
<b>AB-6L</b>	\$15.50	NITRA pneumatic modular assembly and mounting L-bracket with one mounting tang, used to assemble and mount individual NITRA AF-6 series filters, AR-6 series regulators, AL-6 series lubricators and AFR-6 series filter/regulators as a combined unit	1.2
<b>AB-6U</b>	\$15.50	NITRA pneumatic modular assembly U-bracket (no mounting tangs), used to assemble individual NITRA AF-6 series filters, AR-6 series regulators, AL-6 series lubricators and AFR-6 series filter/regulators as a combined unit	0.8



**Part No. AGP-21**



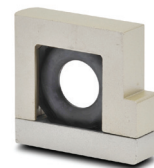
**Part No. ADB-21**



**Part No. AB-4T**



**Part No. AB-4L**



**Part No. AB-4U**



# Pneumatic Air Preparation Accessories

Pneumatic Air Preparation Accessories			
Part No.	Price	Description	Weight (lbs)
<b>AFE-23</b>	\$1.00	NITRA replacement filter element, tin-copper, 40 micron, for AF-2 series filters or AFR-2 series filter/regulators	0.02
<b>AFE-33</b>	\$2.00	NITRA replacement filter element, tin-copper, 40 micron, for AF-3 series filters or AFR-3 series filter/regulators	0.05
<b>AFE-43</b>	\$3.50	NITRA replacement filter element, tin-copper, 40 micron, for AF-4 series filters or AFR-4 series filter/regulators	0.1
<b>AFE-63</b>	\$13.00	NITRA replacement filter element, tin-copper, 40 micron, for AF-6 series filters or AFR-6 series filter/regulators	0.4
<b>AFE-21</b>	\$1.00	NITRA replacement filter element, fiber, 5 micron, for AF-2 series filters or AFR-2 series filter/regulators	0.1
<b>AFE-31</b>	\$1.25	NITRA replacement filter element, fiber, 5 micron, for AF-3 series filters or AFR-3 series filter/regulators	0.1
<b>AFE-41</b>	\$1.50	NITRA replacement filter element, fiber, 5 micron, for AF-4 series filters or AFR-4 series filter/regulators	0.1
<b>AFE-61</b>	\$13.00	NITRA replacement filter element, tin-copper, 5 micron, for AF-6 series filters or AFR-6 series filter/regulators	0.4



**Part No. AFE-43**



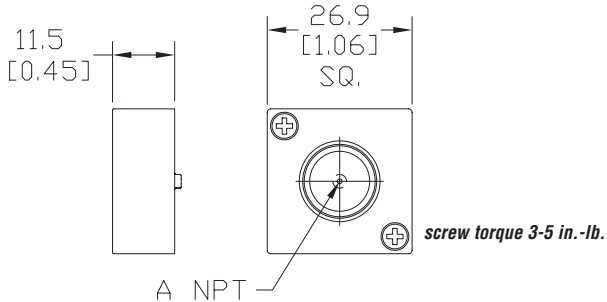
**Part No. AFE-41**

## Dimensions

mm [inches]

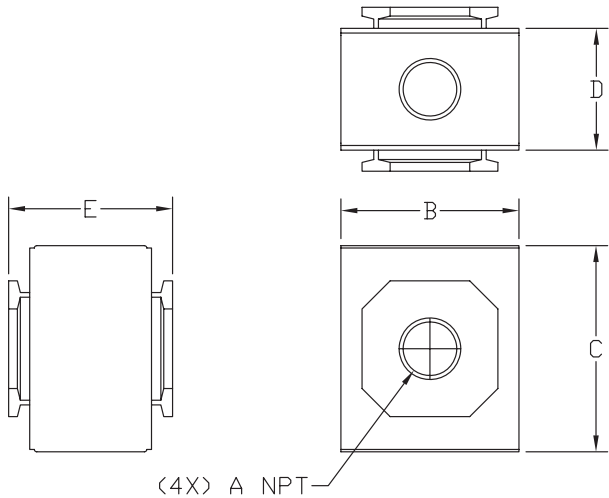
### AGP-x

PART NO.	A NPT
APG-21	1/8
APG-32	1/4



### ADB-x

PART NO.	A NPT	DIM B	DIM C	DIM D	DIM E
ADB-21	1/8	30.0 [1.18]	36.0 [1.42]	19.5 [0.77]	28.5 [1.12]
ADB-22	1/4	30.0 [1.18]	36.0 [1.42]	19.5 [0.77]	28.5 [1.12]
ADB-32	1/4	38.0 [1.50]	44.0 [1.73]	26.0 [1.02]	35.0 [1.38]
ADB-33	3/8	38.0 [1.50]	44.0 [1.73]	26.0 [1.02]	35.0 [1.38]
ADB-44	1/2	52.0 [2.05]	52.0 [2.05]	30.0 [1.18]	42.0 [1.65]



See our Web site [www.AutomationDirect.com](http://www.AutomationDirect.com) for complete Engineering drawings.



# Pneumatic Air Preparation Accessories

## Dimensions

mm [inches]

### AB-xT

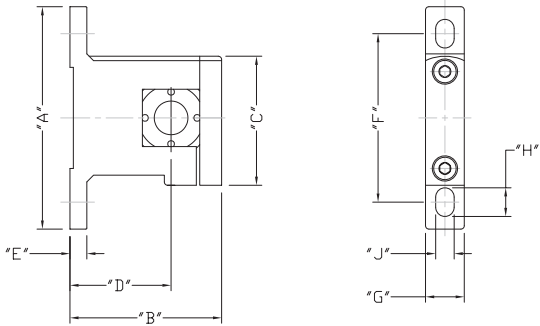


TABLE 1									
PART NUMBER	DIM "A"	DIM "B"	DIM "C"	DIM "D"	DIM "E"	DIM "F"	DIM "G"	DIM "H"	DIM "J"
AB-2T	66.0 [2.60]	45.0 [1.77]	38.3 [1.51]	30.0 [1.18]	5.0 [0.20]	50.0 [1.97]	11.5 [0.45]	8.5 [0.33]	5.5 [0.22]
AB-3T	88.0 [3.46]	60.5 [2.38]	49.3 [1.94]	41.5 [1.63]	7.0 [0.28]	70.0 [2.76]	12.5 [0.49]	9.0 [0.35]	6.5 [0.26]
AB-4T	104.0 [4.09]	76.0 [2.99]	58.5 [2.30]	50.0 [1.97]	7.0 [0.28]	80.0 [3.15]	15.5 [0.61]	12.0 [0.47]	8.6 [0.34]
AB-6T	128.0 [5.04]	104.0 [4.09]	79.5 [3.13]	70.0 [2.76]	10.0 [0.39]	100.0 [3.94]	19.5 [0.77]	16.0 [0.63]	11.0 [0.43]

### AB-xL

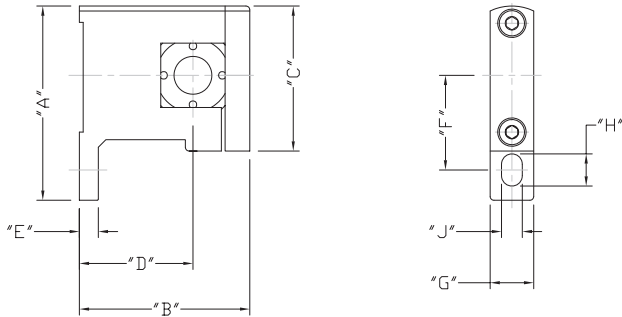


TABLE 1									
PART NUMBER	DIM "A"	DIM "B"	DIM "C"	DIM "D"	DIM "E"	DIM "F"	DIM "G"	DIM "H"	DIM "J"
AB-2L	51.3 [2.02]	45.0 [1.77]	38.3 [1.51]	30.0 [1.18]	5.0 [0.20]	25.0 [0.98]	11.5 [0.45]	8.5 [0.33]	5.5 [0.22]
AB-3L	68.6 [2.70]	60.5 [2.38]	49.3 [1.94]	41.5 [1.63]	7.0 [0.28]	35.0 [1.38]	12.5 [0.49]	9.0 [0.35]	6.5 [0.26]
AB-4L	79.5 [3.13]	76.0 [2.99]	58.5 [2.30]	50.0 [1.97]	7.0 [0.28]	40.0 [1.57]	15.5 [0.61]	12.0 [0.47]	8.6 [0.34]
AB-6L	103.5 [4.07]	104.0 [4.09]	79.5 [3.13]	70.0 [2.76]	10.0 [0.39]	50.0 [1.97]	19.5 [0.77]	16.0 [0.63]	11.0 [0.43]

### AB-xU

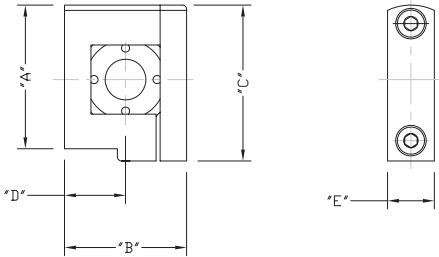


TABLE 1					
PART NUMBER	DIM "A"	DIM "B"	DIM "C"	DIM "D"	DIM "E"
AB-2U	35.5 [1.39]	30.0 [1.18]	38.3 [1.51]	15.0 [0.59]	11.5 [0.45]
AB-3U	43.8 [1.72]	38.0 [1.50]	49.3 [1.94]	19.5 [0.75]	12.5 [0.49]
AB-4U	52.5 [2.07]	52.0 [2.05]	58.5 [2.30]	26.0 [1.02]	15.5 [0.61]
AB-6U	76.5 [3.01]	68.0 [2.68]	79.5 [3.13]	34.0 [1.34]	19.5 [0.77]

See our Web site [www.AutomationDirect.com](http://www.AutomationDirect.com) for complete Engineering drawings.