

Pneumatic Air Preparation - ARV Series Manual Shut-off Pressure Relief Valves



ARV-21

ARV-32

ARV-44



Mounting bracket included.

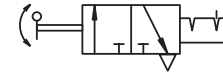


Modular Assembly Example

NITRA™ pneumatic manual shut-off pressure relief valves are available with 1/8", 1/4", 3/8" or 1/2" female port sizes to meet a broad range of pneumatic air supply applications. The three-way, two-position (3 threaded ports) design is used to shut off upstream pressure and relieve downstream pressure. The manually rotated knob can be locked out with the included padlock. Provided with a mounting bracket for stand-alone applications, the modular design also enables easy field assembly with NITRA pneumatic filters, regulators and lubricators (using modular assembly brackets purchased separately).

Features

- 1/8", 1/4", 3/8", and 1/2" NPT female port sizes
- Three-way, two-position (3 threaded ports) design is used to shut off upstream pressure and relieve down-stream pressure
- Manually rotated knob can be locked out with the provided padlock
- Mounting bracket provided for stand-alone applications
- Modular design enables easy field assembly with NITRA filters, regulators, lubricators and combination filter regulators
- 2 year warranty



Manual Shut-off Relief Valve



ARV Series Valves											
Part No.	Price	Weight (lbs)	Port Size	Fluid	Acting Type	Valve Type	Temperature	Operating Pressure	Maximum Pressure	Proof Pressure	Operation Angle
ARV-21	<--->	0.6	1/8"	Air	Manual	3 way 2 position (3 threaded ports)	-5-60°C (23-140°F)	20-130psi (0.15-0.90 MPa) (1.5-9.0 bar)	130psi (0.90MPa) (9.0 bar)	215psi (1.5MPa) (15 bar)	90°
ARV-22	<--->	0.6	1/4"								
ARV-32	<--->	1.3	1/4"								
ARV-33	<--->	1.3	3/8"								
ARV-44	<--->	2.1	1/2"								

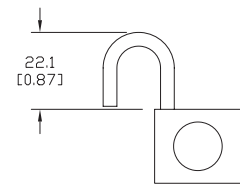
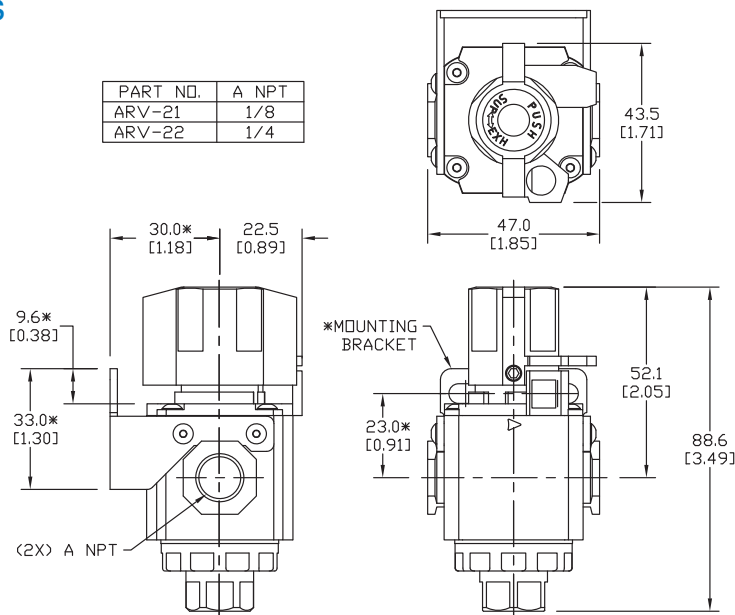
Dimensions

mm [inches]

ARV-2x

*MOUNTING BRACKET INSTALLATION OPTIONAL

PART NO.	A NPT
ARV-21	1/8
ARV-22	1/4



Note: lock included with valve

Note: Unit dimensions are the same for listed models, port NPT varies based on model.

See our Web site www.AutomationDirect.com for complete Engineering drawings.



Pneumatic Air Preparation - ARV Series

Manual Shut-off Pressure Relief Valves

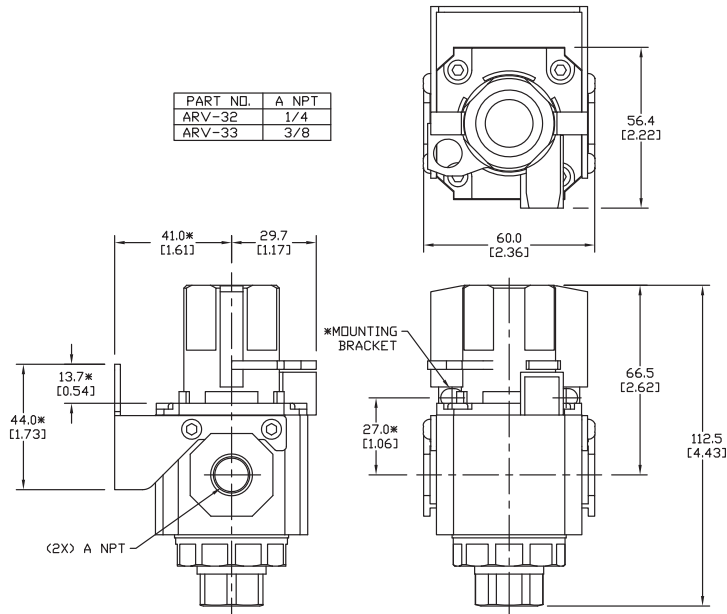
Dimensions

mm [inches]

ARV-3x

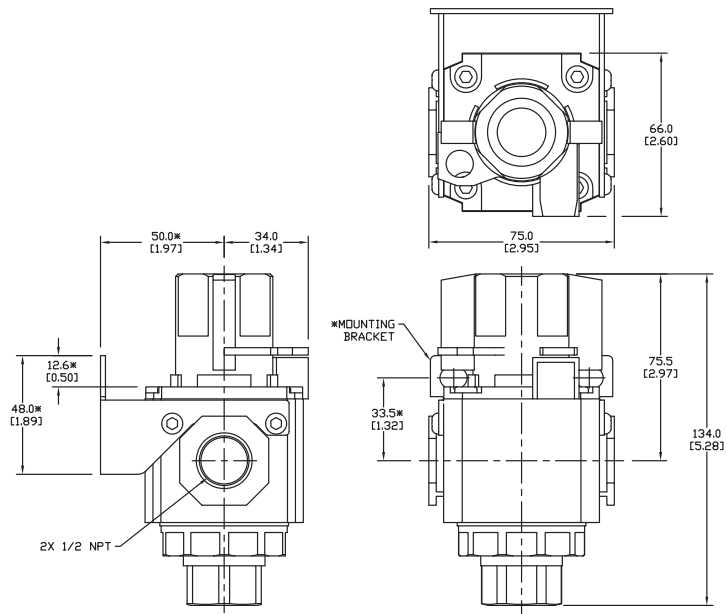
*MOUNTING BRACKET INSTALLATION OPTIONAL

PART NO.	A NPT
ARV-32	1/4
ARV-33	3/8



ARV-4x

*MOUNTING BRACKET INSTALLATION OPTIONAL



Note: Unit dimensions are the same for listed models, port NPT varies based on model.

See our Web site www.AutomationDirect.com for complete Engineering drawings.

Pneumatic Air Preparation Accessories			
Part No.	Price	Description	Weight (lbs)
AGP-21	<--->	NITRA pneumatic gauge port adapter plate, 1/8 inch NPT female port, with mounting screws. Easy field assembly with NITRA pneumatic AR-2 series regulators and AFR-2 series filter / regulators.	0.03
AGP-32	<--->	NITRA pneumatic gauge port adapter plate, 1/4 inch NPT female port, with mounting screws. Easy field assembly with NITRA pneumatic AR-3, AR-4 and AR-6 series regulators and AFR-3, AFR-4 and AFR-6 series filter / regulators.	0.04
ADB-21	<--->	NITRA pneumatic distribution block with four (4) 1/8 inch NPT female ports. Modular design enables easy field assembly with NITRA pneumatic AF-21 series filters, AR-21 series regulators, AL-21 series lubricators and AFR-21 series filter / regulators.	0.1
ADB-22	<--->	NITRA pneumatic distribution block with four (4) 1/4 inch NPT female ports. Modular design enables easy field assembly with NITRA pneumatic AF-22 series filters, AR-22 series regulators, AL-22 series lubricators and AFR-22 series filter / regulators.	0.1
ADB-32	<--->	NITRA pneumatic distribution block with four (4) 1/4 inch NPT female ports. Modular design enables easy field assembly with NITRA pneumatic AF-32 series filters, AR-32 series regulators, AL-32 series lubricators and AFR-32 series filter / regulators.	0.2
ADB-33	<--->	NITRA pneumatic distribution block with four (4) 3/8 inch NPT female ports. Modular design enables easy field assembly with NITRA pneumatic AF-33 series filters, AR-33 series regulators, AL-33 series lubricators and AFR-33 series filter / regulators.	0.2
ADB-44	<--->	NITRA pneumatic distribution block with four (4) 1/2 inch NPT female ports. Modular design enables easy field assembly with NITRA pneumatic AF-44 series filters, AR-44 series regulators, AL-44 series lubricators and AFR-44 series filter / regulators.	0.4
AB-2T	<--->	NITRA pneumatic modular assembly and mounting T-bracket with two mounting tangs, used to assemble and mount individual NITRA AF-2 series filters, AR-2 series regulators, AL-2 series lubricators and AFR-2 series filter/regulators as a combined unit	0.2
AB-2L	<--->	NITRA pneumatic modular assembly and mounting L-bracket with one mounting tang, used to assemble and mount individual NITRA AF-2 series filters, AR-2 series regulators, AL-2 series lubricators and AFR-2 series filter/regulators as a combined unit	0.2
AB-2U	<--->	NITRA pneumatic modular assembly U-bracket (no mounting tangs), used to assemble individual NITRA AF-2 series filters, AR-2 series regulators, AL-2 series lubricators and AFR-2 series filter/regulators as a combined unit	0.1
AB-3T	<--->	NITRA pneumatic modular assembly and mounting T-bracket with two mounting tangs, used to assemble and mount individual NITRA AF-3 series filters, AR-3 series regulators, AL-3 series lubricators and AFR-3 series filter/regulators as a combined unit	0.3
AB-3L	<--->	NITRA pneumatic modular assembly and mounting L-bracket with one mounting tang, used to assemble and mount individual NITRA AF-3 series filters, AR-3 series regulators, AL-3 series lubricators and AFR-3 series filter/regulators as a combined unit	0.3
AB-3U	<--->	NITRA pneumatic modular assembly U-bracket (no mounting tangs), used to assemble individual NITRA AF-3 series filters, AR-3 series regulators, AL-3 series lubricators and AFR-3 series filter/regulators as a combined unit	0.2
AB-4T	<--->	NITRA pneumatic modular assembly and mounting T-bracket with two mounting tangs, used to assemble and mount individual NITRA AF-4 series filters, AR-4 series regulators, AL-4 series lubricators and AFR-4 series filter/regulators as a combined unit	0.5
AB-4L	<--->	NITRA pneumatic modular assembly and mounting L-bracket with one mounting tang, used to assemble and mount individual NITRA AF-4 series filters, AR-4 series regulators, AL-4 series lubricators and AFR-4 series filter/regulators as a combined unit	0.5
AB-4U	<--->	NITRA pneumatic modular assembly U-bracket (no mounting tangs), used to assemble individual NITRA AF-4 series filters, AR-4 series regulators, AL-4 series lubricators and AFR-4 series filter/regulators as a combined unit	0.4
AB-6T	<--->	NITRA pneumatic modular assembly and mounting T-bracket with two mounting tangs, used to assemble and mount individual NITRA AF-6 series filters, AR-6 series regulators, AL-6 series lubricators and AFR-6 series filter/regulators as a combined unit	1.3
AB-6L	<--->	NITRA pneumatic modular assembly and mounting L-bracket with one mounting tang, used to assemble and mount individual NITRA AF-6 series filters, AR-6 series regulators, AL-6 series lubricators and AFR-6 series filter/regulators as a combined unit	1.2
AB-6U	<--->	NITRA pneumatic modular assembly U-bracket (no mounting tangs), used to assemble individual NITRA AF-6 series filters, AR-6 series regulators, AL-6 series lubricators and AFR-6 series filter/regulators as a combined unit	0.8



Part No. AGP-21



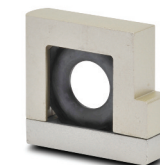
Part No. ADB-21



Part No. AB-4T



Part No. AB-4L



Part No. AB-4U

Pneumatic Air Preparation Accessories			
Part No.	Price	Description	Weight (lbs)
AFE-23	<-->	NITRA replacement filter element, tin-copper, 40 micron, for AF-2 series filters or AFR-2 series filter/regulators	0.02
AFE-33	<-->	NITRA replacement filter element, tin-copper, 40 micron, for AF-3 series filters or AFR-3 series filter/regulators	0.05
AFE-43	<-->	NITRA replacement filter element, tin-copper, 40 micron, for AF-4 series filters or AFR-4 series filter/regulators	0.1
AFE-63	<-->	NITRA replacement filter element, tin-copper, 40 micron, for AF-6 series filters or AFR-6 series filter/regulators	0.4
AFE-21	<-->	NITRA replacement filter element, fiber, 5 micron, for AF-2 series filters or AFR-2 series filter/regulators	0.1
AFE-31	<-->	NITRA replacement filter element, fiber, 5 micron, for AF-3 series filters or AFR-3 series filter/regulators	0.1
AFE-41	<-->	NITRA replacement filter element, fiber, 5 micron, for AF-4 series filters or AFR-4 series filter/regulators	0.1
AFE-61	<-->	NITRA replacement filter element, tin-copper, 5 micron, for AF-6 series filters or AFR-6 series filter/regulators	0.4



Part No. AFE-43



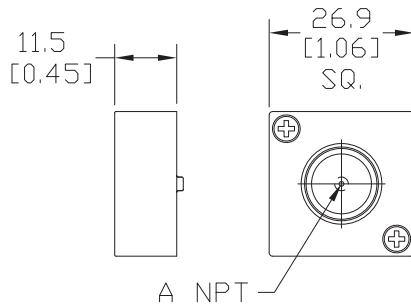
Part No. AFE-41

Dimensions

mm [inches]

AGP-x

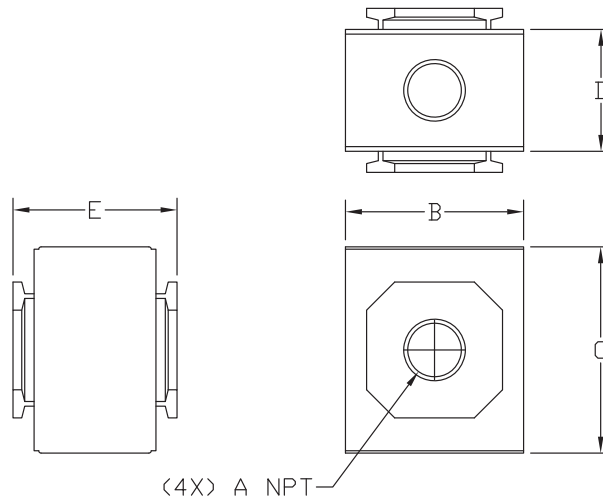
PART NO.	A NPT
APG-21	1/8
APG-32	1/4



screw torque 3-5 in.-lb.

ADB-x

PART NO.	A NPT	DIM B	DIM C	DIM D	DIM E
ADB-21	1/8	30.0 [1.18]	36.0 [1.42]	19.5 [0.77]	28.5 [1.12]
ADB-22	1/4	30.0 [1.18]	36.0 [1.42]	19.5 [0.77]	28.5 [1.12]
ADB-32	1/4	38.0 [1.50]	44.0 [1.73]	26.0 [1.02]	35.0 [1.38]
ADB-33	3/8	38.0 [1.50]	44.0 [1.73]	26.0 [1.02]	35.0 [1.38]
ADB-44	1/2	52.0 [2.05]	52.0 [2.05]	30.0 [1.18]	42.0 [1.65]

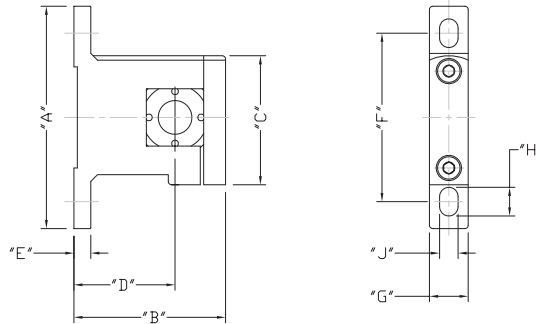


See our Web site www.AutomationDirect.com for complete Engineering drawings.

Dimensions

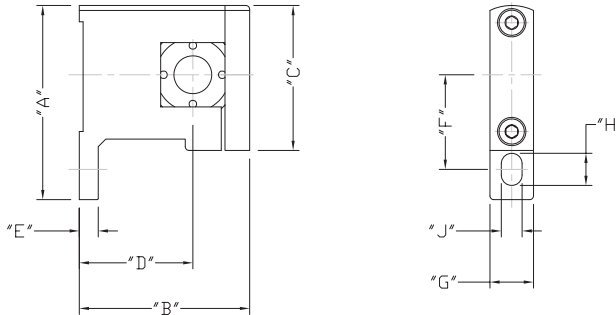
mm [inches]

AB-xT



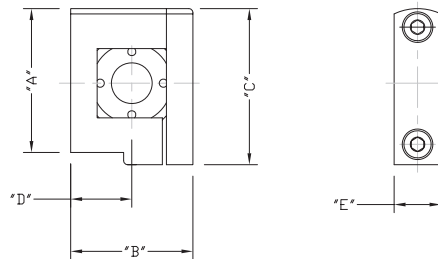
PART NUMBER	DIM "A"	DIM "B"	DIM "C"	DIM "D"	DIM "E"	DIM "F"	DIM "G"	DIM "H"	DIM "J"
AB-2T	66.0 [2.60]	45.0 [1.77]	38.3 [1.51]	30.0 [1.18]	5.0 [0.20]	50.0 [1.97]	11.5 [0.45]	8.5 [0.33]	5.5 [0.22]
AB-3T	88.0 [3.46]	60.5 [2.38]	49.3 [1.94]	41.5 [1.63]	7.0 [0.28]	70.0 [2.76]	12.5 [0.49]	9.0 [0.35]	6.5 [0.26]
AB-4T	104.0 [4.09]	76.0 [2.99]	58.5 [2.30]	50.0 [1.97]	7.0 [0.28]	80.0 [3.15]	15.5 [0.61]	12.0 [0.47]	8.6 [0.34]
AB-6T	128.0 [5.04]	104.0 [4.09]	79.5 [3.13]	70.0 [2.76]	10.0 [0.39]	100.0 [3.94]	19.5 [0.77]	16.0 [0.63]	11.0 [0.43]

AB-xL



PART NUMBER	DIM "A"	DIM "B"	DIM "C"	DIM "D"	DIM "E"	DIM "F"	DIM "G"	DIM "H"	DIM "J"
AB-2L	51.3 [2.02]	45.0 [1.77]	38.3 [1.51]	30.0 [1.18]	5.0 [0.20]	25.0 [0.98]	11.5 [0.45]	8.5 [0.33]	5.5 [0.22]
AB-3L	68.6 [2.70]	60.5 [2.38]	49.3 [1.94]	41.5 [1.63]	7.0 [0.28]	35.0 [1.38]	12.5 [0.49]	9.0 [0.35]	6.5 [0.26]
AB-4L	79.5 [3.13]	76.0 [2.99]	58.5 [2.30]	50.0 [1.97]	7.0 [0.28]	40.0 [1.57]	15.5 [0.61]	12.0 [0.47]	8.6 [0.34]
AB-6L	103.5 [4.07]	104.0 [4.09]	79.5 [3.13]	70.0 [2.76]	10.0 [0.39]	50.0 [1.97]	19.5 [0.77]	16.0 [0.63]	11.0 [0.43]

AB-xU



PART NUMBER	DIM "A"	DIM "B"	DIM "C"	DIM "D"	DIM "E"
AB-2U	35.5 [1.39]	30.0 [1.18]	38.3 [1.51]	15.0 [0.59]	11.5 [0.45]
AB-3U	43.8 [1.72]	38.0 [1.50]	49.3 [1.94]	19.5 [0.75]	12.5 [0.49]
AB-4U	52.5 [2.07]	52.0 [2.05]	58.5 [2.30]	26.0 [1.02]	15.5 [0.61]
AB-6U	76.5 [3.01]	68.0 [2.68]	79.5 [3.13]	34.0 [1.34]	19.5 [0.77]

See our Web site www.AutomationDirect.com for complete Engineering drawings.