

NEMA 4, 4X, 12 and 13 Stainless Steel Single-Door Wall Mount



Applications

Provides unmatched protection for housing electrical components in highly corrosive environments. This enclosure is used in indoor and outdoor settings that are frequently wet or have constant exposure to water, other liquids, or contaminants.

Construction

- Fabricated from 14 gauge type 304 or 316L stainless steel
- Rolled lip on three sides of door and all sides of enclosure opening is provided to exclude liquids and contaminants
- Quick and easy-to-operate stainless steel door clamps are provided
- Hasp and staple is provided for padlocking
- Doors are sealed with poured-in-place polyurethane gasket
- Collar studs provided for mounting optional subpanels
- External mounting feet for mounting enclosure
- Grounding provisions provided
- Optional subpanels must be ordered separately
- Continuously plasma-welded seams
- [Uses WAN4XRA clamp](#)

Finish

- Cover and outside of enclosure have smooth grained finish

Listings

- UL 508, Types 4, 4X, 12 and 13 [File E64791]
- CSA Certified, Types 4 and 12 [File LL66078]
- Meets NEMA/EEMAC Types 4, 4X, 12 and 13 requirements



NEMA 4, 4X, 12 and 13 Stainless Steel Single-Door Wall Mount Enclosure

304 Stainless Steel	Price	316L Stainless Steel	Price	Dimensions HxWxD	Painted Steel Subpanel	Stainless Steel Subpanel	Galvanized Subpanel	Perforated Subpanel
SSN4161206	\$593.00	SSN4161206A	\$687.00	16.00 x 12.00 x 7.03 [406 x 305 x 179]	NP1612	NP1612SS	NP1612G	NP1612PP
SSN4161208	\$581.00	SSN4161208A	\$781.00	16.00 x 12.00 x 9.03 [406 x 305 x 229]	NP1612	NP1612SS	NP1612G	NP1612PP
SSN4161606	\$667.00	SSN4161606A	\$810.00	16.00 x 16.00 x 7.03 [406 x 406 x 179]	NP1616	NP1616SS	NP1616G	NP1616PP
SSN4162006	\$733.00	SSN4162006A	\$889.00	16.00 x 20.00 x 7.03 [406 x 508 x 179]	NP2016	NP2016SS	NP2016G	NP2016PP
SSN4201606	\$661.00	SSN4201606A	\$831.00	20.00 x 16.00 x 7.03 [508 x 406 x 179]	NP2016	NP2016SS	NP2016G	NP2016PP
SSN4201608	\$763.00	SSN4201608A	\$896.00	20.00 x 16.00 x 9.03 [508 x 406 x 229]	NP2016	NP2016SS	NP2016G	NP2016PP
SSN4201610	\$840.00	SSN4201610A	\$1,020.00	20.00 x 16.00 x 11.03 [508 x 406 x 280]	NP2016	NP2016SS	NP2016G	NP2016PP
SSN4202006	\$796.00	SSN4202006A	\$983.00	20.00 x 20.00 x 7.03 [508 x 508 x 179]	NP2020	NP2020SS	NP2020G	NP2020PP

Notes: Subpanels must be ordered separately.
Dimensions in inches [millimeters].
Letters in table correspond to letters on dimensional drawings.

Continued on next page

Enclosure Shipping Schedule				
Same day	1 - 7 days	1 - 10 days	1 - 15 days	1 - 20 days

Color indicates shipping lead time in business days.

NEMA 4, 4X, 12 and 13 Stainless Steel Single-Door Wall Mount

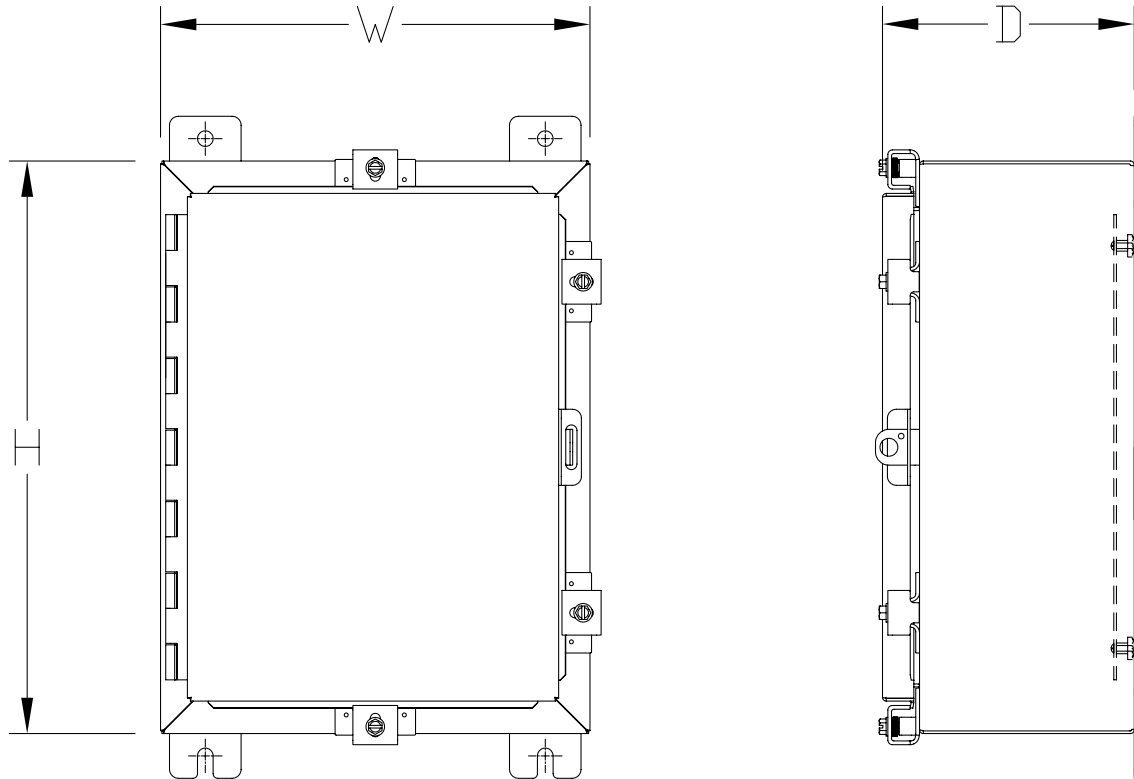
NEMA 4, 4X, 12 and 13 Stainless Steel Single-Door Wall Mount Enclosure [cont.]								
304 Stainless Steel	Price	316L Stainless Steel	Price	Dimensions HxWxD	Painted Steel Subpanel	Stainless Steel Subpanel	Galvanized Subpanel	Perforated Subpanel
-	-	SSN4202008A	\$1,047.00	20.00 x 20.00 x 9.03 [508 x 508 x 229]	NP2020	NP2020SS	NP2020G	NP2020PP
SSN4202408	\$947.00	SSN4202408A	\$1,155.00	20.00 x 24.00 x 9.03 [508 x 610 x 229]	NP2420	NP2420SS	NP2420G	NP2420PP
SSN4241608	\$856.00	SSN4241608A	\$1,042.00	24.00 x 16.00 x 9.03 [610 x 406 x 229]	NP2416	NP2416SS	NP2416G	-
SSN4242006	\$871.00	SSN4242006A	\$1,078.00	24.00 x 20.00 x 7.03 [610 x 508 x 179]	NP2420	NP2420SS	NP2420G	NP2420PP
SSN4242008	\$936.00	SSN4242008A	\$1,087.00	24.00 x 20.00 x 9.03 [610 x 508 x 229]	NP2420	NP2420SS	NP2420G	NP2420PP
SSN4242010	\$1,019.00	SSN4242010A	\$1,235.00	24.00 x 20.00 x 11.03 [610 x 508 x 280]	NP2420	NP2420SS	NP2420G	NP2420PP
-	-	SSN4242406A	\$1,187.00	24.00 x 24.00 x 7.03 [610 x 610 x 179]	NP2424	NP2424SS	NP2424G	NP2424PP
SSN4242408	\$944.00	SSN4242408A	\$1,196.00	24.00 x 24.00 x 9.03 [610 x 610 x 229]	NP2424	NP2424SS	NP2424G	NP2424PP
SSN4242412	\$1,190.00	SSN4242412A	\$1,444.00	24.00 x 24.00 x 13.03 [610 x 610 x 331]	NP2424	NP2424SS	NP2424G	NP2424PP
SSN4243008	\$1,190.00	SSN4243008A	\$1,444.00	24.00 x 30.00 x 9.03 [610 x 762 x 229]	NP3024	NP3024SS	NP3024G	NP3024PP
SSN4302008	\$1,078.00	SSN4302008A	\$1,306.00	30.00 x 20.00 x 9.03 [762 x 508 x 229]	NP3020	NP3020SS	NP3020G	-
SSN4302408	\$1,296.00	SSN4302408A	\$1,357.00	30.00 x 24.00 x 9.03 [762 x 610 x 229]	NP3024	NP3024SS	NP3024G	NP3024PP
SSN4302410	\$1,330.00	SSN4302410A	\$1,531.00	30.00 x 24.00 x 11.03 [762 x 610 x 280]	NP3024	NP3024SS	NP3024G	NP3024PP
SSN4302412	\$1,348.00	SSN4302412A	\$1,538.00	30.00 x 24.00 x 13.03 [762 x 610 x 331]	NP3024	NP3024SS	NP3024G	NP3024PP
SSN4302416	\$1,507.00	SSN4302416A	\$1,791.00	30.00 x 24.00 x 17.03 [762 x 610 x 433]	NP3024	NP3024SS	NP3024G	NP3024PP
SSN4303008	\$1,357.00	SSN4303008A	\$1,648.00	30.00 x 30.00 x 9.03 [762 x 762 x 229]	NP3030	NP3030SS	NP3030G	NP3030PP
SSN4362408	\$1,450.00	SSN4362408A	\$1,614.00	36.00 x 24.00 x 9.03 [914 x 610 x 229]	NP3624	NP3624SS	NP3624G	NP3624PP
SSN4362410	\$1,420.00	SSN4362410A	\$1,723.00	36.00 x 24.00 x 11.03 [914 x 610 x 280]	NP3624	NP3624SS	NP3624G	NP3624PP
SSN4363008	\$1,527.00	SSN4363008A	\$1,741.00	36.00 x 30.00 x 9.03 [914 x 762 x 229]	NP3630	NP3630SS	NP3630G	NP3630PP
SSN4363010	\$1,769.00	SSN4363010A	\$1,971.00	36.00 x 30.00 x 11.03 [914 x 762 x 280]	NP3630	NP3630SS	NP3630G	NP3630PP
SSN4363012	\$1,721.00	SSN4363012A	\$1,964.00	36.00 x 30.00 x 13.03 [914 x 762 x 331]	NP3630	NP3630SS	NP3630G	NP3630PP
SSN4363016	\$1,915.00	SSN4363016A	\$2,326.00	36.00 x 30.00 x 17.03 [914 x 762 x 433]	NP3630	NP3630SS	NP3630G	NP3630PP
SSN4363612	\$2,107.00	SSN4363612A	\$2,347.00	36.00 x 36.00 x 13.03 [914 x 914 x 331]	NP3636	NP3636SS	NP3636G	NP3636PP
SSN4423010	\$1,800.00	SSN4423010A	\$2,135.00	42.00 x 30.00 x 11.03 [1067 x 762 x 280]	NP4230	NP4230SS	NP4230G	NP4230PP
SSN4423608	\$1,915.00	SSN4423608A	\$2,326.00	42.00 x 36.00 x 9.03 [1067 x 914 x 229]	NP4236	NP4236SS	NP4236G	NP4236PP
SSN4483608	\$2,111.00	SSN4483608A	\$2,561.00	48.00 x 36.00 x 9.03 [1219 x 914 x 229]	NP4836	NP4836SS	NP4836G	NP4836PP
SSN4483610	\$2,242.00	SSN4483610A	\$2,749.00	48.00 x 36.00 x 11.03 [1219 x 914 x 280]	NP4836	NP4836SS	NP4836G	NP4836PP
SSN4483612	\$2,358.00	SSN4483612A	\$2,864.00	48.00 x 36.00 x 13.03 [1219 x 914 x 331]	NP4836	NP4836SS	NP4836G	NP4836PP
SSN4483616	\$2,606.00	SSN4483616A	\$2,974.00	48.00 x 36.00 x 17.03 [1219 x 914 x 433]	NP4836	NP4836SS	NP4836G	NP4836PP
SSN4603612	\$2,785.00	SSN4603612A	\$3,379.00	60.00 x 36.00 x 13.03 [1524 x 914 x 331]	NP6036	NP6036SS	NP6036G	NP6036PP
SSN4603616	\$3,141.00	SSN4603616A	\$3,757.00	60.00 x 36.00 x 17.03 [1524 x 914 x 433]	NP6036	NP6036SS	NP6036G	NP6036PP

Notes: Subpanels must be ordered separately.
Dimensions in inches [millimeters].
Letters in table correspond to letters on dimensional drawings.

NEMA 4, 4X, 12 and 13 Stainless Steel Single-Door Wall Mount



Dimensions



See our website: www.AutomationDirect.com for complete engineering drawings.

Enclosure Subpanels



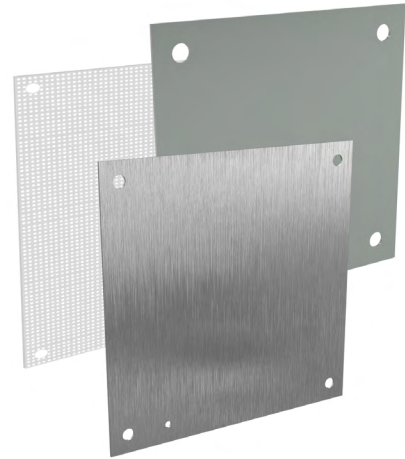
Subpanels for NEMA 1, 12, 4 and 4X Wall Mount Enclosures and WC9 NEMA 12 Operator Consoles

- 12 gauge steel (perforated subpanels are 14 gauge)
- Subpanels with any side over 17" have 3/4" flange on all sides
- Painted steel and perforated subpanels are white polyester powder over phosphatized surfaces
- Galvanized subpanels have a conductive finish (no paint)

Panels listed fit the following enclosures:

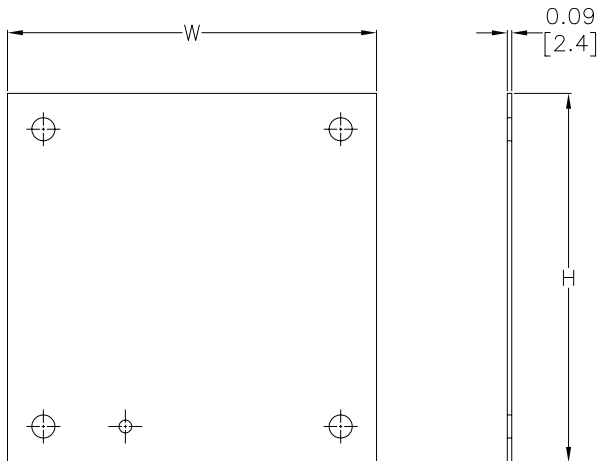
- NEMA 1 large (N1C, 42in width and wider)
- NEMA 12 single door wall mount (N12)
- NEMA 12 two door wall mount (WA_WF)
- NEMA 12 single door flush wall mount (WA_FM)
- NEMA 4 (N4) and 4X (SSN) single door wall mount
- NEMA 12 operator consoles (WC9)
- NEMA 12 Wall Disconnect (SDN12_PL & ABN12)
- NEMA 4 & 4X Wall Mount Disconnect (SSN4 & SSN4X)

NOTE: Use NPxxxx subpanels in NEMA 1, NEMA 4 and 4X, and NEMA 12 enclosures only. Do NOT use NPxxxx subpanels in N412 Ultimate Series enclosures with a C in the suffix.



Dimensions

in [mm]



Perforated panels have 0.13" diameter holes at 0.25" spacing.

NOTE:
SUBPANELS LARGER THAN
20 X 20 HAVE (2) 0.31"
GROUND HOLES.

See our website: www.AutomationDirect.com for complete engineering drawings.

Enclosures Subpanels



Enclosure Shipping Schedule				
Same day	1 - 7 days	1 - 10 days	1 - 15 days	1 - 20 days

Color indicates shipping lead time in business days.

Subpanels for NEMA 1, 12, 4 and 4X Wall Mount Enclosures and WC9 NEMA 12 Operator Consoles									
Painted Steel	Price	Galvanized	Price	Perforated	Price	304 Stainless Steel	Price	Nominal Enclosure Size HxW	Subpanel Size AxB
NP1212	\$16.50	NP1212G	\$16.50	-		-		12 x 12	9.00 x 9.00 [229 x 229]
NP1224	\$31.00	NP1224G	\$31.00	-		-		24 x 12	9.00 x 21.00 [229 x 533]
NP1612	\$20.00	NP1612G	\$20.00	NP1612PP	\$20.00	NP1612SS	\$52.00	12 x 16 16 x 12	13.00 x 9.00 [330 x 229]
NP1616	\$26.50	NP1616G	\$26.50	NP1616PP	\$26.50	NP1616SS	\$71.00	16 x 16	13.00 x 13.00 [330 x 330]
NP2012	\$28.50	NP2012G	\$28.50	-		-		12 x 20 20 x 12	17.00 x 9.00 [432 x 229]
NP2016	\$26.50	NP2016G	\$26.50	NP2016PP	\$26.50	NP2016SS	\$71.00	20 x 16 16 x 20	17.00 x 13.00 [432 x 330]
NP2020	\$33.50	NP2020G	\$33.50	NP2020PP	\$33.50	NP2020SS	\$94.00	20 x 20	17.00 x 17.00 [432 x 432]
NP2416	\$37.50	NP2416G	\$37.50	-		-		24 x 16	21.00 x 13.00 [533 x 330]
NP2420	\$45.50	NP2420G	\$45.50	NP2420PP	\$45.50	NP2420SS	\$121.00	20 x 24 24 x 20	21.00 x 17.00 [533 x 432]
NP2424	\$48.00	NP2424G	\$48.00	NP2424PP	\$48.00	NP2424SS	\$130.00	24 x 24	21.00 x 21.00 [533 x 533]
NP3016	\$49.50	NP3016G	\$49.50	-		-		30 x 16	27.00 x 13.00 [686 x 330]
NP3020	\$60.00	NP3020G	\$60.00	-		NP3020SS	\$166.00	30 x 20	27.00 x 17.00 [686 x 432]
NP3024	\$57.00	NP3024G	\$57.00	NP3024PP	\$57.00	NP3024SS	\$157.00	24 x 30 30 x 24	27.00 x 21.00 [686 x 533]
NP3030	\$98.00	NP3030G	\$98.00	NP3030PP	\$98.00	NP3030SS	\$280.00	30 x 30	27.00 x 27.00 [686 x 686]
NP3624	\$76.00	NP3624G	\$76.00	NP3624PP	\$76.00	NP3624SS	\$216.00	36 x 24	33.00 x 21.00 [838 x 533]
NP3630	\$100.00	NP3630G	\$100.00	NP3630PP	\$100.00	NP3630SS	\$267.00	30 x 36 36 x 30	33.00 x 27.00 [838 x 686]
NP3636	\$119.00	NP3636G	\$119.00	NP3636PP	\$119.00	NP3636SS	\$323.00	36 x 36	33.00 x 33.00 [838 x 838]
NP4024	\$100.00	-	-	-		-		40 x 24	37.00 x 21.00 [940 x 533]
NP4224	\$96.00	NP4224G	\$96.00	-		-		42 x 24	39.00 x 21.00 [991 x 533]
NP4230	\$128.00	NP4230G	\$128.00	NP4230PP	\$128.00	NP4230SS	\$348.00	42 x 30	39.00 x 27.00 [991 x 686]
NP4236	\$150.00	NP4236G	\$150.00	NP4236PP	\$150.00	NP4236SS	\$417.00	42 x 36	39.00 x 33.00 [991 x 838]
NP4824	\$109.00	NP4824G	\$109.00	-		-		48 x 24	45.00 x 21.00 [1143 x 533]
NP4830	\$144.00	NP4830G	\$144.00	-		-		48 x 30	45.00 x 27.00 [1143 x 686]
NP4836	\$170.00	NP4836G	\$170.00	NP4836PP	\$170.00	NP4836SS	\$452.00	48 x 36	45.00 x 33.00 [1143 x 838]
NP6030	\$176.00	NP6030G	\$176.00	-		-		60 x 30	57.00 x 27.00 [1448 x 686]
NP6036	\$209.00	NP6036G	\$209.00	NP6036PP	\$209.00	NP6036SS	\$597.00	60 x 36	57.00 x 33.00 [1448 x 838]
NP7230	\$203.00	NP7230G	\$203.00	-		-		72 x 30	69.00 x 27.00 [1753 x 686]
NP7236	\$248.00	NP7236G	\$248.00	-		-		72 x 36	69.00 x 33.00 [1753 x 838]

Notes: Dimensions in inches [millimeters].

Letters in table correspond to letters on dimensional drawing.

Disconnect enclosures will be up to 2 inches [51mm] wider than width dimensions in this table.

See our website: www.AutomationDirect.com for complete engineering drawings.