

NEMA 4, 12 and 13 Lift-Off Cover Wall Mount



Construction

- Bodies fabricated from 14 gauge steel; Doors fabricated from 16 gauge steel
- Continuously welded seams ground smooth
- Poured-in-place polyurethane gasket
- External mounting feet, top and bottom of enclosure
- Weldnuts are provided for mounting optional subpanels securely on models 6" x 4" and larger
- Stainless steel screws and clamps on four sides of cover to assure watertight seal
- Optional subpanels and terminal kits must be ordered separately
- Grounding provisions provided
- **Uses WABN4JIC clamp**

Finish

- ANSI 61 gray polyester powder light texture inside and out over phosphatized surfaces

Listings

- UL 50, Types 4, 12 & 13 (6x6x4 and above)
- UL 508, Types 4,12 & 13 (6x4x3 and smaller) [UL Files E23553, E64791]
- CSA Certified, Types 4 &12 [CSA File LL66078]
- NEMA/EEMAC Types 4, 12 & 13



Applications

Designed for use as instrument housings, electrical control enclosures, terminal wiring boxes or electrical junction boxes. Provides protection where equipment is hosed down, very wet or in outdoor applications.

Enclosure Shipping Schedule				
Same day	1 - 7 days	1 -10 days	1 - 15 days	1 - 20 days

Color indicates shipping lead time in business days.

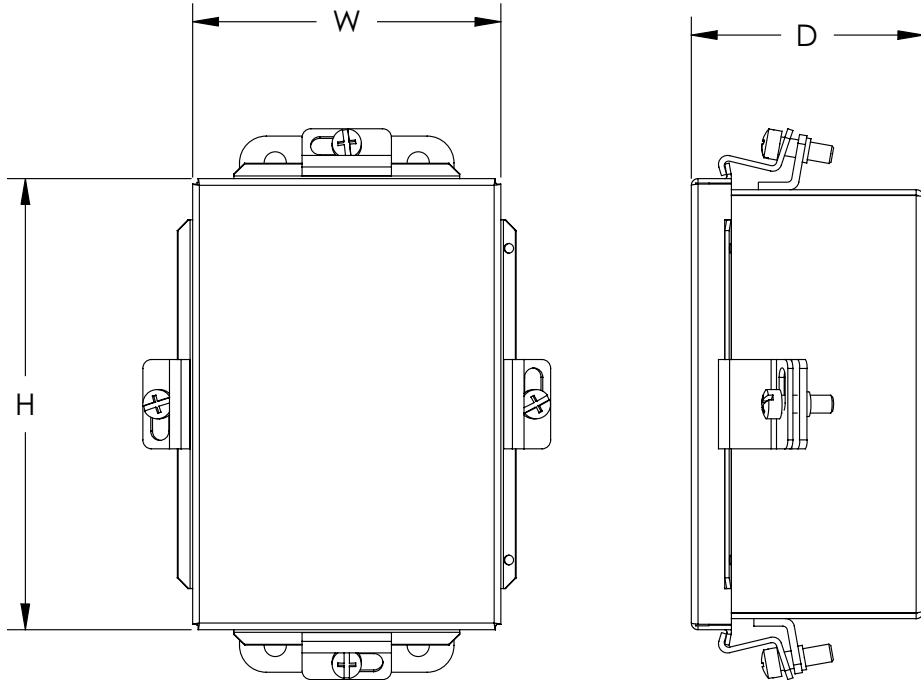
NEMA 4, 12 and 13 Lift-Off Cover Wall Mount					
Part Number	Price	Enclosure Size HxWxD	Painted Steel Subpanel	Stainless Steel Subpanel	Galvanized Subpanel
BN4040403	\$40.00	4.31 x 4.31 x 3.16 [109 x 109 x 80]	-	-	-
BN4060403	\$45.50	6.31 x 4.31 x 3.16 [160 x 109 x 80]	P0604	P0604SS	P0604G
BN4060604	\$55.00	6.31 x 6.31 x 4.16 [160 x 160 x 106]	P0606	P0606SS	P0606G
BN4080603	\$58.00	8.31 x 6.31 x 3.16 [211 x 160 x 80]	P0806	P0806SS	P0806G
BN4100804	\$74.00	10.31 x 8.31 x 4.16 [262 x 211 x 106]	P1008	P1008SS	P1008G
BN4121005	\$94.00	12.31 x 10.31 x 5.16 [313 x 262 x 131]	P1210	P1210SS	P1210G
BN4141206	\$119.00	14.31 x 12.31 x 6.16 [363 x 313 x 156]	P1412	P1412SS	P1412G
BN4161406	\$140.00	16.31 x 14.31 x 6.16 [414 x 363 x 156]	P1614	P1614SS	P1614G

Notes: Subpanels must be ordered separately.
Dimensions in inches [millimeters].

NEMA 4, 12 and 13 Lift-Off Cover Wall Mount



Dimensions



See our website: www.AutomationDirect.com for complete engineering drawings.

Enclosure Subpanels

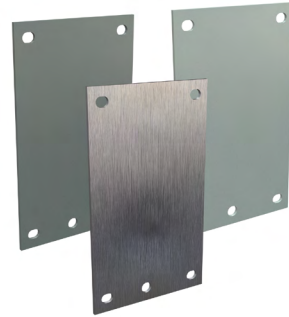


Subpanels

Subpanels are not included with most enclosures and must be purchased separately. The specifications table for each enclosure family lists the part number of the subpanel that goes with each enclosure.

Subpanels for Small NEMA 12 (B) and NEMA 4 (BN4) Enclosures

- 14 gauge (painted, stainless, and galvanized)
- Painted steel subpanels are white polyester powder over phosphatized surfaces
- Galvanized subpanels have a conductive finish (no paint)
- Subpanels fit the following enclosures: B, B_CH, BN4, BN4_CH, BN4_CHQT, BN4_SS, BN4_CHSS, BN4_CHSSA, BN4_CHQTSS, BN4_CHQTSSA ("_" refers to dimensions).



Subpanels for B and BN4 Enclosures							
Painted Steel	Price	304 Stainless Steel	Price	Galvanized	Price	Nominal Enclosure Size HxW	Subpanel Size AxB
P0604	\$3.00	P0604SS	\$11.00	P0604G	\$3.00	6 x 4	4.88 x 2.88 [124 x 73]
P0606	\$3.25	P0606SS	\$13.50	P0606G	\$3.25	6 x 6	4.88 x 4.88 [124 x 124]
P0806	\$4.00	P0806SS	\$16.00	P0806G	\$4.00	8 x 6	6.88 x 4.88 [175 x 124]
P0808	\$4.75	-		P0808G	\$4.75	8 x 8	6.88 x 6.88 [175 x 175]
P1008	\$5.50	P1008SS	\$23.00	P1008G	\$5.50	10 x 8	8.88 x 6.88 [226 x 175]
P1010	\$7.50	-		P1010G	\$7.50	10 x 10	8.88 x 8.88 [226 x 226]
P1206	\$6.00	-		P1206G	\$6.00	12 x 6	10.88 x 4.88 [276 x 124]
P1210	\$7.75	P1210SS	\$30.00	P1210G	\$7.75	12 x 10	10.88 x 8.88 [276 x 226]
P1212	\$9.25	P1212SS	\$38.00	P1212G	\$9.25	12 x 12	10.88 x 10.88 [276 x 276]
P1408	\$8.25	-		P1408G	\$8.25	14 x 8	12.88 x 6.88 [327 x 175]
P1412	\$10.00	P1412SS	\$43.50	P1412G	\$10.00	14 x 12	12.88 x 10.88 [327 x 276]
P1610	\$11.00	-		P1610G	\$11.00	16 x 10	14.88 x 8.88 [378 x 226]
P1614	\$12.00	P1614SS	\$57.00	P1614G	\$12.00	16 x 14	14.88 x 12.88 [378 x 327]

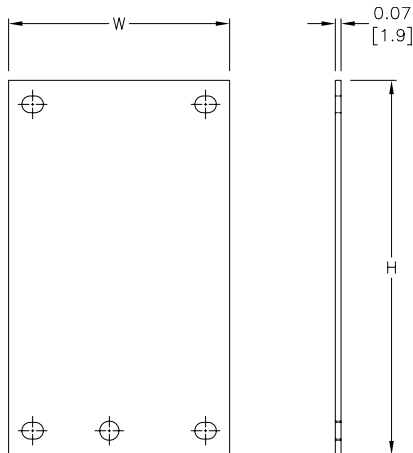
Notes: Dimensions in inches (millimeters). Letters in table correspond to letters on dimensional drawing.

Enclosure Shipping Schedule				
Same day	1 - 7 days	1 -10 days	1 - 15 days	1 - 20 days

Color indicates shipping lead time in business days.

Dimensions

in [mm]



See our website: www.AutomationDirect.com for complete engineering drawings.