

NEMA 4, 12 and 13 Continuous-Hinge Wall Mount



Applications

Designed for use as instrument housings, electrical control enclosures, terminal wiring boxes or electrical junction boxes. Provides protection in areas that are hosed down, very wet, or in outdoor applications.



Construction

- Bodies fabricated from 14 gauge carbon steel; Doors fabricated from 16 gauge carbon steel
- Continuously welded seams ground smooth
- Poured-in-place polyurethane gasket
- External mounting feet, top and bottom
- Weldnuts are provided on models 6" x 4" and larger to secure optional subpanel
- Continuous-hinge cover is secured with stainless steel screws and clamps to ensure a watertight seal
- Cover removable by pulling stainless steel hinge pin
- Grounding provisions provided
- Optional subpanels must be ordered separately
- **Uses WABN4JIC clamp**

Finish

- ANSI 61 gray polyester powder light texture inside and out over phosphatized surfaces

Listings

- UL 50, Types 4, 12 and 13 [UL file E6924 and E64791]
- Meets NEMA/EEMAC Types 4, 12 and 13 requirements



FOR CURRENT LISTINGS, PLEASE SEE WWW.AUTOMATIONDIRECT.COM

Enclosure Shipping Schedule

Same day	1 - 5 days	1 - 7 days	1 - 10 days	1 - 15 days	1 - 20 days
----------	------------	------------	-------------	-------------	-------------

Color indicates shipping lead time in business days.

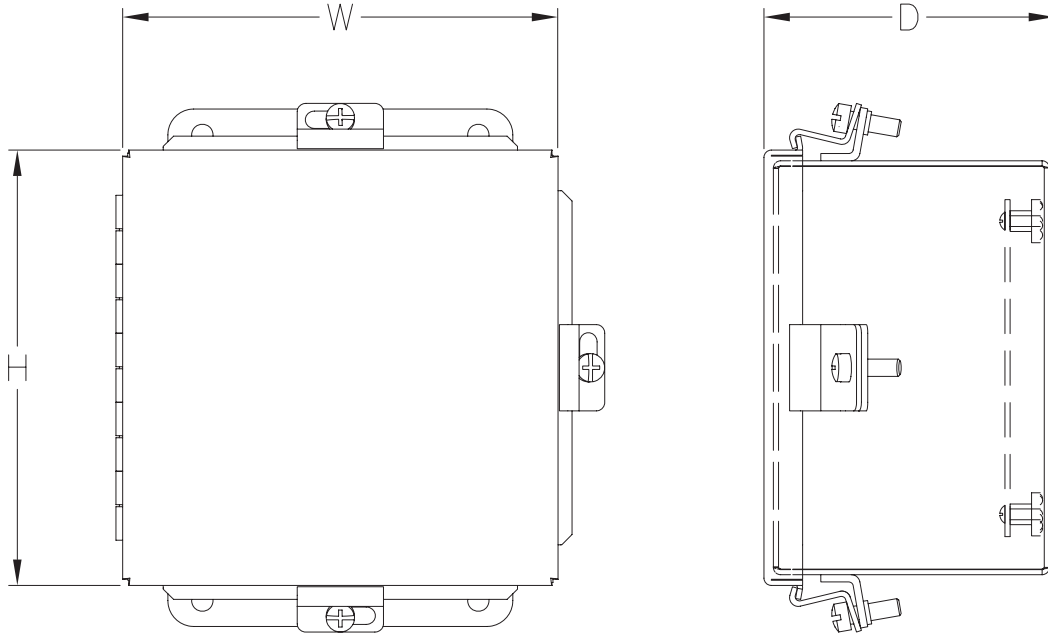
NEMA 4, 12 and 13 Continuous-Hinge Wall Mount

Part Number	Price	Enclosure Size HxWxD	Painted Steel Subpanel	Stainless Steel Subpanel	Galvanized Subpanel
BN4040403CH	\$46.00	4.31 x 4.31 x 3.16 [109 x 109 x 80]	-	-	-
BN4060403CH	\$52.00	6.31 x 4.31 x 3.16 [160 x 109 x 80]	P0604	P0604SS	P0604G
BN4060604CH	\$59.00	6.31 x 6.31 x 4.16 [160 x 160 x 106]	P0606	P0606SS	P0606G
BN4080603CH	\$64.00	8.31 x 6.31 x 3.16 [211 x 160 x 80]	P0806	P0806SS	P0806G
BN4100804CH	\$78.00	10.31 x 8.31 x 4.16 [262 x 211 x 106]	P1008	P1008SS	P1008G
BN4100806CH	\$90.00	10.31 x 8.31 x 6.16 [262 x 211 x 156]	P1008	P1008SS	P1008G
BN4121005CH	\$99.00	12.31 x 10.31 x 5.16 [313 x 262 x 131]	P1210	P1210SS	P1210G
BN4121206CH	\$105.00	12.31 x 12.31 x 6.16 [313 x 313 x 156]	P1212	P1212SS	P1212G
BN4141206CH	\$125.00	14.31 x 12.31 x 6.16 [363 x 313 x 156]	P1412	P1412SS	P1412G
BN4161406CH	\$147.00	16.31 x 14.31 x 6.16 [414 x 363 x 156]	P1614	P1614SS	P1614G

Notes: Subpanels must be ordered separately.
Dimensions in inches [millimeters].

NEMA 4, 12 and 13 Continuous-Hinge Wall Mount

Dimensions



See our website: www.AutomationDirect.com for complete engineering drawings.

Enclosure Subpanels

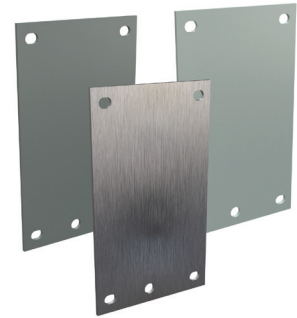
Subpanels

Subpanels are not included with most enclosures and must be purchased separately.

The specifications table for each enclosure family list the part number of the subpanel that goes with each enclosure.

Subpanels for Small NEMA 12 (B) and NEMA 4 (BN4) Enclosures

- 14 gauge (painted, stainless, and galvanized)
- Painted steel subpanels are white polyester powder over phosphatized surfaces
- Galvanized subpanels have a conductive finish (no paint)
- Subpanels fit the following enclosures:
B, B_CH, BN4, BN4_CH, BN4_CHQT, BN4_SS, BN4_CHSS, BN4_CHSSA, BN4_CHQTSS, BN4_CHQTSSA ("_" refers to dimensions).



Enclosure Shipping Schedule					
Same day	1 - 5 days	1 - 7 days	1 - 10 days	1 - 15 days	1 - 20 days

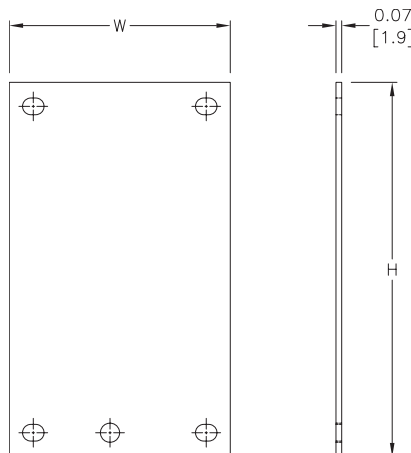
Color indicates shipping lead time in business days.

Subpanels for B and BN4 Enclosures							
Painted Steel	Price	304 Stainless Steel	Price	Galvanized	Price	Nominal Enclosure Size HxW	Subpanel Size AxB
P0604	\$3.50	P0604SS	\$12.50	P0604G	\$3.50	6 x 4	4.88 x 2.88 [124 x 73]
P0606	\$4.25	P0606SS	\$15.00	P0606G	\$4.25	6 x 6	4.88 x 4.88 [124 x 124]
P0806	\$5.00	P0806SS	\$18.00	P0806G	\$5.00	8 x 6	6.88 x 4.88 [175 x 124]
P0808	\$5.75	–	–	P0808G	\$5.75	8 x 8	6.88 x 6.88 [175 x 175]
P1008	\$6.50	P1008SS	\$26.00	P1008G	\$6.50	10 x 8	8.88 x 6.88 [226 x 175]
P1010	\$8.00	–	–	P1010G	\$8.00	10 x 10	8.88 x 8.88 [226 x 226]
P1206	\$6.50	–	–	P1206G	\$6.50	12 x 6	10.88 x 4.88 [276 x 124]
P1210	\$9.25	P1210SS	\$36.50	P1210G	\$9.25	12 x 10	10.88 x 8.88 [276 x 226]
P1212	\$11.00	P1212SS	\$42.50	P1212G	\$11.00	12 x 12	10.88 x 10.88 [276 x 276]
P1408	\$9.00	–	–	P1408G	\$9.00	14 x 8	12.88 x 6.88 [327 x 175]
P1412	\$12.00	P1412SS	\$49.00	P1412G	\$12.00	14 x 12	12.88 x 10.88 [327 x 276]
P1610	\$12.00	–	–	P1610G	\$12.00	16 x 10	14.88 x 8.88 [378 x 226]
P1614	\$16.00	P1614SS	\$64.00	P1614G	\$16.00	16 x 14	14.88 x 12.88 [378 x 327]

Notes: Dimensions in inches [millimeters].
Letters in table correspond to letters on dimensional drawing.

Dimensions

in [mm]



See our website: www.AutomationDirect.com for complete engineering drawings.