

NEMA 4, 4X and 12 Stainless Steel Freestanding Two-Door with 3-Point Handle



Application

Designed to house electrical and electronic controls, terminals, and instruments in areas that are regularly hosed down or are otherwise very wet. Enclosures are also suitable for outdoor applications.

Construction

- Body and doors fabricated from 12 gauge 304 stainless steel
- Continuously welded seams ground smooth
- “Uni-strut” mounting channels are welded horizontally to interior body sides [top, bottom and center]
- Optional swing, half, full and rack panels can be mounted anywhere along “uni-strut” channel
- Rolled lip around three sides of door and along top of enclosure’s opening excludes liquids and contaminants from entering
- 3 -point 316L SS padlocking handles
- Heavy gauge continuous hinge
- Doors are removable by pulling stainless steel continuous hinge pin

- Removable print pocket is provided
- Heavy duty removable lifting eyes
- Doors are sealed with poured in place polyurethane gasket
- Grounding provisions provided
- **Uses WAL3 SS series handles**

Finish

Smooth-grained stainless steel finish.

Listings

- UL 508, Type 4, 4x, and 12 [UL File E64791]
- CSA Certified, Type 4, 4x, and 12 CSA File LL66078]
- NEMA/EEMAC Type 4, 4x, and 12



FOR CURRENT LISTINGS, PLEASE SEE WWW.AUTOMATIONDIRECT.COM

Enclosure Shipping Schedule				
Same day	1 - 7 days	1 -10 days	1 - 15 days	1 - 20 days

Color indicates shipping lead time in business days.

NEMA 4, 4X and 12 Stainless Steel Freestanding Two-Door Enclosures with 3-Point Handle		
Part Number	Price	Enclosure Size HxWxD
WA604818SSFSDN43PT	\$7,249.00	60.06 x 48.06 x 18.06 [1526 x 1221 x 459]
WA724818SSFSDN43PT	\$7,978.00	72.06 x 48.06 x 18.06 [1830 x 1221 x 459]
WA724824SSFSDN43PT	\$8,654.00	72.06 x 48.06 x 24.06 [1830 x 1221 x 611]
WA726018SSFSDN43PT	\$8,986.00	72.06 x 60.06 x 18.06 [1830 x 1526 x 459]
WA726024SSFSDN43PT	\$9,717.00	72.06 x 60.06 x 24.06 [1830 x 1526 x 611]
WA726036SSFSDN43PT	\$11,205.00	72.06 x 60.06 x 36.06 [1830 x 1526 x 916]
WA727218SSFSDN43PT	\$9,989.00	72.06 x 72.06 x 18.06 [1830 x 1830 x 459]
WA727224SSFSDN43PT	\$10,796.00	72.06 x 72.06 x 24.06 [1830 x 1830 x 611]
WA904820SSFSDN43PT	\$9,341.00	90.06 x 48.06 x 20.06 [2288 x 1221 x 510]
WA907220SSFSDN43PT	\$11,794.00	90.06 x 72.06 x 20.06 [2288 x 1830 x 510]
WA907224SSFSDN43PT	\$12,392.00	90.06 x 72.06 x 24.06 [2288 x 1830 x 611]
WA907236SSFSDN43PT	\$14,197.00	90.06 x 72.06 x 36.06 [2288 x 1830 x 916]

Notes: Subpanels must be ordered separately.
Dimensions in inches [millimeters]
Letters in table correspond to letters on dimensional drawings.

NEMA 4, 4X and 12 Stainless Steel Freestanding Two-Door with 3-Point Handle

Enclosure Shipping Schedule

Same day	1 - 7 days	1 - 10 days	1 - 15 days	1 - 20 days
----------	------------	-------------	-------------	-------------

Color indicates shipping lead time in business days.

Standard Subpanels for NEMA 4, 4X and 12 Stainless Steel Freestanding Two-Door Enclosures w/ 3-Point Handle

Enclosures	Full Height		Half Height	
	Painted Steel	Galvanized	Painted Steel	Galvanized
WA604818SSFSDN43PT	WA60P48F1	WA60P48F1G	WA60P48F2	WA60P48F2G
WA724818SSFSDN43PT	WA72P48F1	WA72P48F1G	WA72P48F2	WA72P48F2G
WA724824SSFSDN43PT	WA72P48F1	WA72P48F1G	WA72P48F2	WA72P48F2G
WA726018SSFSDN43PT	WA72P60F1	WA72P60F1G	WA72P60F2	WA72P60F2G
WA726024SSFSDN43PT	WA72P60F1	WA72P60F1G	WA72P60F2	WA72P60F2G
WA726036SSFSDN43PT	WA72P60F1	WA72P60F1G	WA72P60F2	WA72P60F2G
WA727218SSFSDN43PT	WA72P72F1	WA72P72F1G	WA72P72F2	WA72P72F2G
WA727224SSFSDN43PT	WA72P72F1	WA72P72F1G	WA72P72F2	WA72P72F2G
WA904820SSFSDN43PT	WA90P48F1	WA90P48F1G	WA90P48F2	WA90P48F2G
WA907220SSFSDN43PT	WA90P72F1	-	WA90P72F2	WA90P72F2G
WA907224SSFSDN43PT	WA90P72F1	-	WA90P72F2	WA90P72F2G
WA907236SSFSDN43PT	WA90P72F1	-	WA90P72F2	WA90P72F2G

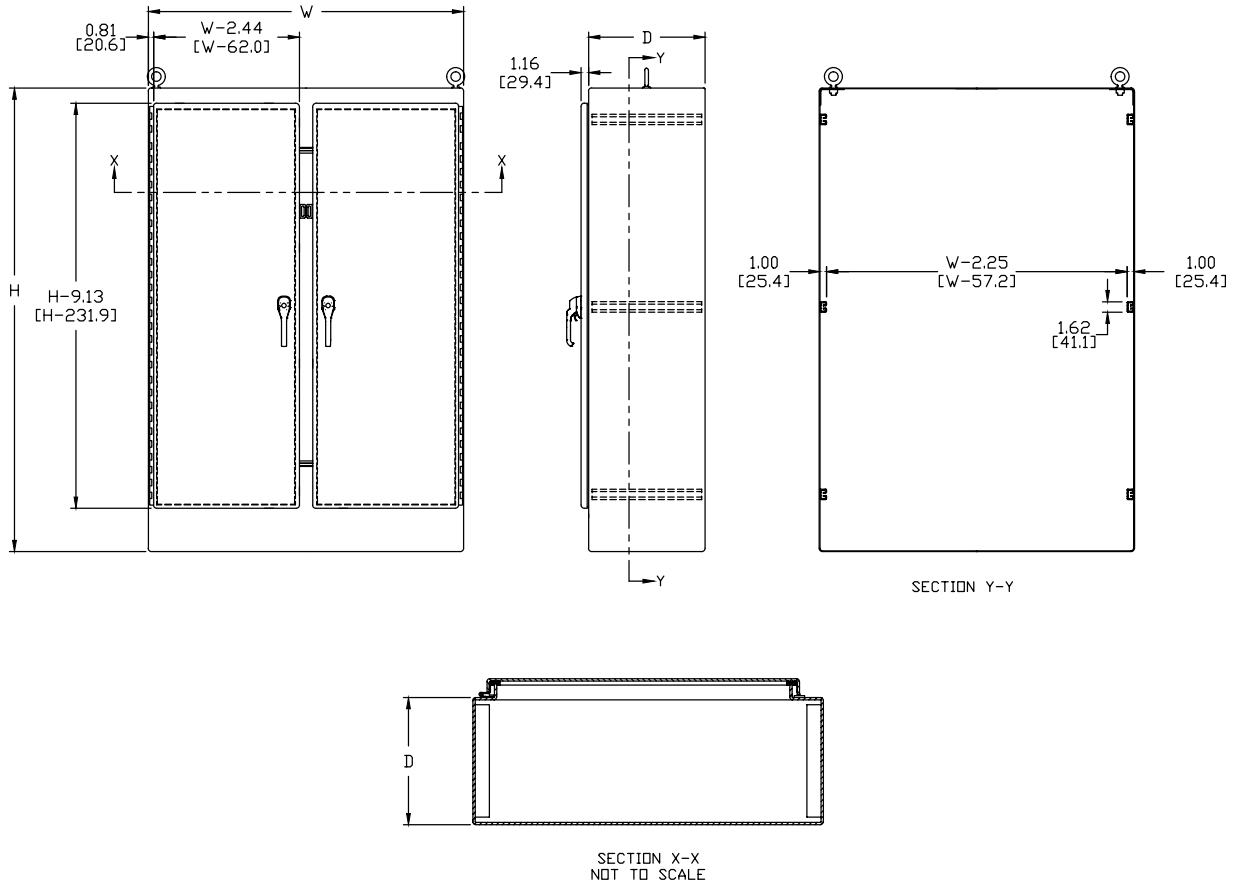
Side-Mount Panels for NEMA 4, 4X and 12 Stainless Steel Freestanding Two-Door Enclosures w/ 3-Point Handle

Enclosures	Painted Steel	Galvanized
WA604818SSFSDN43PT	WA60SMP14	WA60SMP14G
WA724818SSFSDN43PT	WA72SMP14	WA72SMP14G
WA724824SSFSDN43PT	WA72SMP14, WA72SMP20	WA72SMP14G, WA72SMP20G
WA726018SSFSDN43PT	WA72SMP14	WA72SMP14G
WA726024SSFSDN43PT	WA72SMP14, WA72SMP20	WA72SMP14G, WA72SMP20G
WA726036SSFSDN43PT	WA72SMP14, WA72SMP20	WA72SMP14G, WA72SMP20G
WA727218SSFSDN43PT	WA72SMP14	WA72SMP14G
WA727224SSFSDN43PT	WA72SMP14, WA72SMP20	WA72SMP14G, WA72SMP20G
WA904820SSFSDN43PT	WA90SMP14	WA90SMP14G, WA90SMP20G
WA907220SSFSDN43PT	WA90SMP14	WA90SMP14G
WA907224SSFSDN43PT	WA90SMP14, WA90SMP20	WA90SMP14G, WA90SMP20G
WA907236SSFSDN43PT	WA90SMP14, WA90SMP20	WA90SMP14G, WA90SMP20G

Enclosures	Swing-Out Rack	Center Post Support
WA604818SSFSDN43PT	-	WA60FSCPS
WA724818SSFSDN43PT	-	WA72FSCPS
WA724824SSFSDN43PT	-	WA72FSCPS
WA726018SSFSDN43PT	-	WA72FSCPS
WA726024SSFSDN43PT	-	WA72FSCPS
WA726036SSFSDN43PT	-	WA72FSCPS
WA727218SSFSDN43PT	-	WA72FSCPS
WA727224SSFSDN43PT	-	WA72FSCPS
WA904820SSFSDN43PT	-	WA90FSCPS
WA907220SSFSDN43PT	-	WA90FSCPS
WA907224SSFSDN43PT	-	WA90FSCPS
WA907236SSFSDN43PT	-	WA90FSCPS

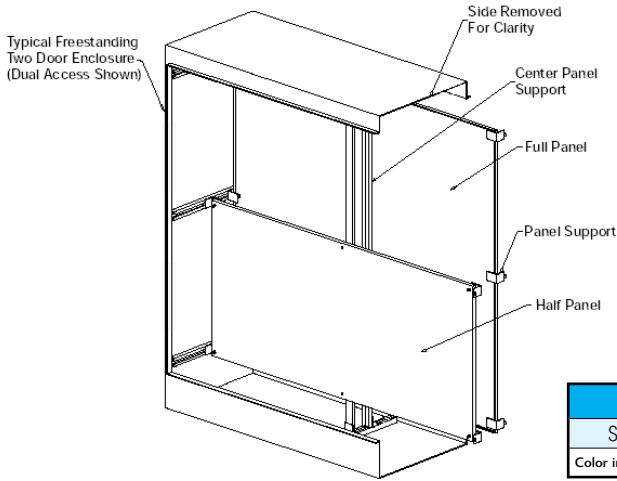
NEMA 4, 4X and 12 Stainless Steel Freestanding Two-Door with 3-Point Handle

Dimensions in [mm]



See our website: www.AutomationDirect.com for complete engineering drawings.

WA-F1/F2 Panels for Two-door Freestanding Enclosures



Description

- Panels for two-door single-access and two-door dual-access, freestanding NEMA 12 enclosures
- Manufactured of 10 gauge steel and can be positioned anywhere along horizontal depth-wise mounting channels
- Half-height panels can be located in the upper or lower portion of the enclosure
- Mounting hardware is furnished with each panel
- Painted steel subpanels are painted white polyester powder over phosphatized surfaces
- Galvanized subpanels have a conductive finish (no paint)

Enclosure Shipping Schedule				
Same day	1 - 7 days	1 - 10 days	1 - 15 days	1 - 20 days

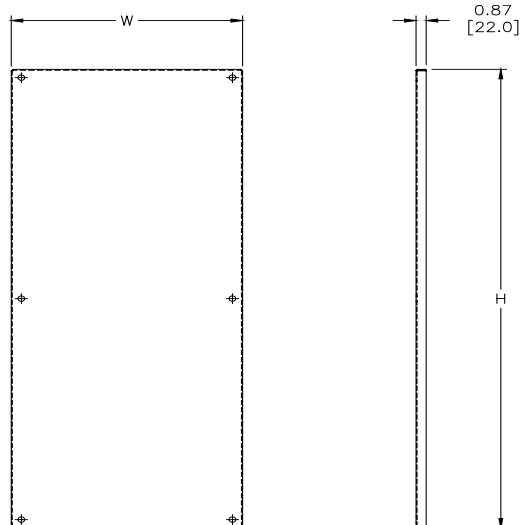
Color indicates shipping lead time in business days.

Painted Steel	Price	Galvanized	Price	Panel Size AxB	Subpanel Type
WA60P48F1	\$462.00	WA60P48F1G	\$462.00	48.00 x 44.00 [1219 x 1118]	Full
WA60P48F2	\$257.00	WA60P48F2G	\$257.00	24.88 x 44.00 [632 x 1118]	Half
WA72P48F1	\$523.00	WA72P48F1G	\$523.00	60.00 x 44.00 [1524 x 1118]	Full
WA72P48F2	\$334.00	WA72P48F2G	\$334.00	30.88 x 44.00 [784 x 1118]	Half
WA72P60F1	\$606.00	WA72P60F1G	\$606.00	60.00 x 56.00 [1524 x 1422]	Full
WA72P60F2	\$376.00	WA72P60F2G	\$376.00	30.88 x 56.00 [784 x 1422]	Half
WA72P72F1	\$689.00	-	-	68.00 x 68.00 [1727 x 1727]	Full
WA72P72F2	\$419.00	WA72P72F2G	\$419.00	30.88 x 68.88 [784 x 1727]	Half
WA90P48F1	\$615.00	WA90P48F1G	\$615.00	78.00 x 44.00 [1981 x 1118]	Full
WA90P48F2	\$380.00	WA90P48F2G	\$380.00	39.88 x 44.00 [1013 x 1118]	Half
WA90P72F1	\$830.00	-	-	78.00 x 68.00 [1981 x 1727]	Full
WA90P72F2	\$490.00	WA90P72F2G	\$490.00	39.88 x 68.00 [1013 x 1727]	Half

Notes: Dimensions in inches [millimeters].
Suffix F1 = full panel, F2 = half panel

Dimensions

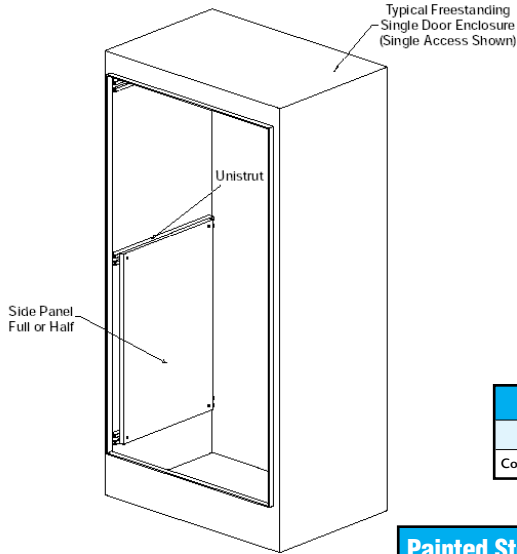
in [mm]



IMPORTANT NOTE: CENTER PANEL SUPPORT IS SUPPLIED WITH A REGULAR TWO-DOOR ENCLOSURE PANEL. THIS SUPPORT IS USED ONLY AS A BRACE. IT IS NOT INTENDED TO BE USED AS A SUPPORT FOR SINGLE-DOOR SUBPANELS, RELAY RACKS, ETC. USE WA_FSCPS PANEL SUPPORTS FOR THIS PURPOSE.

See our website: www.AutomationDirect.com for complete engineering drawings.

WA-SMP Series Side-Mount Panels for Freestanding Enclosures



Description

- Panels for freestanding NEMA 4 and freestanding NEMA 12 enclosures
- Panels are fabricated from 12 gauge steel
- They provide extra mounting space on the sides of the enclosure
- Mounting hardware is furnished with each panel
- Painted steel subpanels are painted white polyester powder over phosphatized surfaces
- Galvanized subpanels have a conductive finish (no paint)
- Panels attach securely to mounting channels

Enclosure Shipping Schedule				
Same day	1 - 7 days	1 - 10 days	1 - 15 days	1 - 20 days

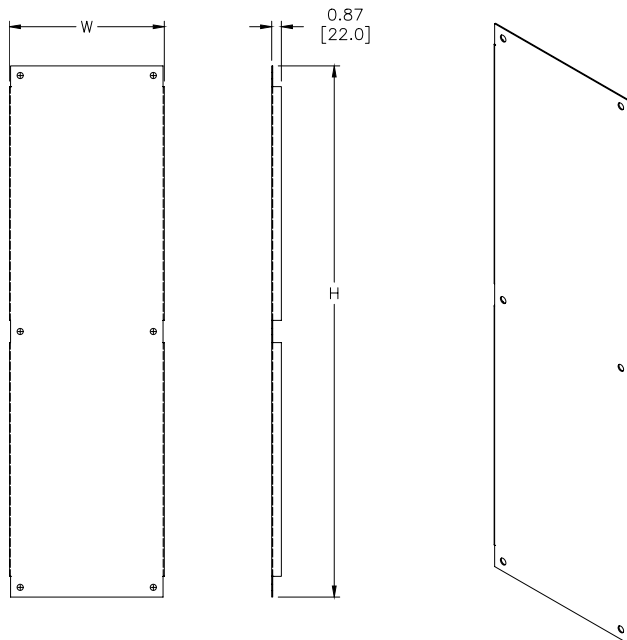
Color indicates shipping lead time in business days.

Painted Steel	Price	Galvanized	Price	Panel Size AxB
WA60SMP14	\$135.00	WA60SMP14G	\$135.00	48.00 x 14.00 [1219 x 356]
WA72SMP14	\$153.00	WA72SMP14G	\$153.00	60.00 x 14.00 [1524 x 356]
WA72SMP20	\$188.00	WA72SMP20G	\$188.00	60.00 x 20.00 [1524 x 508]
WA90SMP14	\$220.00	WA90SMP14G	\$220.00	78.00 x 14.00 [1981 x 356]
WA90SMP20	\$231.00	WA90SMP20G	\$231.00	78.00 x 20.00 [1981 x 508]

Note: Dimensions in inches (millimeters)

Dimensions

in [mm]



See our website: www.AutomationDirect.com for complete engineering drawings.

Enclosure Accessories - Panel Mounting



JIC and NEMA Swing-Out Panel Kits

Swing-out panel kits are designed to allow mounting of switches, pilot lights and other components near the front of the enclosure for easy access or meter reading.

Sealing washers are included to ensure that the enclosure will meet the original NEMA rating after installation.

These kits are designed for use with standard Hubbell-Wiegmann JIC and NEMA panels. They do not work with N412xxxC Ultimate Series enclosures or HW-XXXX series non-metal enclosures.



Panel Kits	Price	Description	Wt. [lb]
WAJCDFK	\$37.00	Hubbell-Wiegmann enclosure swing-out panel kit, plated steel, for use on NEMA continuous hinge style enclosures. Includes (2) hinge brackets, (2) fixed brackets, and mounting hardware. Panel sold separately.	1
WANADFK	\$49.50	Hubbell-Wiegmann enclosure swing-out panel kit, plated steel, for use on NEMA single and two-door style enclosures. Includes (2) hinge brackets, (2) fixed brackets, and mounting hardware. Panel sold separately.	3

Note: Panels must be ordered separately from enclosure.

Enclosure Shipping Schedule		
Same day	1 - 7 days	1 -10 days

Color indicates shipping lead time in business days.

Panel Supports

Panel supports provide additional support for panels on which heavy instruments are mounted.

They are adjustable so the weight of the panel is partially supported by the bottom of the enclosure.



WAPS03

Panel Supports	Price	Description	Wt. [lb]
WAPS03	\$34.50	Hubbell-Wiegmann enclosure panel support foot, white polyester powder finish, for single and two-door enclosures where distance between bottom of panel and enclosure is less than 2.25 inches. Package of 2. Load limit: 250 lbs.	1
WAPS09	\$49.50	Hubbell-Wiegmann enclosure panel support foot, white polyester powder finish, for free-standing enclosures where distance between bottom of panel and enclosure is less than 8.5 inches and greater than 2.88 inches. Package of 2. Load limit: 250 lbs.	2

Center Panel Supports for Freestanding Enclosures

Center Panel Supports	Price	Description	Wt. [lb]
WA60FSCPS	\$137.00	Hubbell-Wiegmann enclosure center panel support, white polyester powder finish, for 60 inch high enclosures. Allows two single-wide sub-panels (including swing-out panels and rack mount frames) to be mounted in a double-door enclosure.	15
WA72FSCPS	\$152.00	Hubbell-Wiegmann enclosure center panel support, white polyester powder finish, for 72 inch high enclosures. Allows two single-wide sub-panels (including swing-out panels and rack mount frames) to be mounted in a double-door enclosure.	21
WA90FSCPS	\$181.00	Hubbell-Wiegmann enclosure center panel support, white polyester powder finish, for 90 inch high enclosures. Allows two single-wide sub-panels (including swing-out panels and rack mount frames) to be mounted in a double-door enclosure.	22



WA60FSCPS

See our website: www.AutomationDirect.com for complete engineering drawings.