

# NEMA 4, 4X and 12 Stainless Steel Two-Door Wall Mount with 3-Point Handle



## Application

SSN4WF Series is intended for use in housing electrical and electronic controls, instruments, components, and associated wiring. These enclosures incorporate double-hinged doors which provide convenient access. Designed for outdoor use in protecting components from dust, dirt, oil, and water.

## Construction

- Bodies and doors fabricated from 14 gauge 304 stainless steel
- Continuously welded seams ground smooth
- Rolled lip around all sides of enclosure opening is provided to exclude liquids and contaminants
- Two independent doors with removable center post
- 3-point 316L SS padlocking handles
- Doors are removable by pulling heavy gauge stainless continuous hinge pin
- Doors are sealed with a poured-in-place polyurethane gasket
- Collar studs are provided for mounting optional subpanels
- External mounting feet are provided for mounting
- Grounding provisions provided
- Removable print pocket is provided
- **Uses WAL3 SS series handles**

## Finish

Smooth-grained stainless steel finish

## Listings

- UL 508 Listed, Types 12, 4, 4X [UL Files E64791]
- CSA Certified, Types 12, 4, 4X [CSA File LL66078]
- NEMA/EEMAC Type 12, 4, 4x



FOR CURRENT LISTINGS, PLEASE SEE [WWW.AUTOMATONDIRECT.COM](http://WWW.AUTOMATONDIRECT.COM)

### Enclosure Shipping Schedule

Same day	1 - 7 days	1 - 10 days	1 - 15 days	1 - 20 days
----------	------------	-------------	-------------	-------------

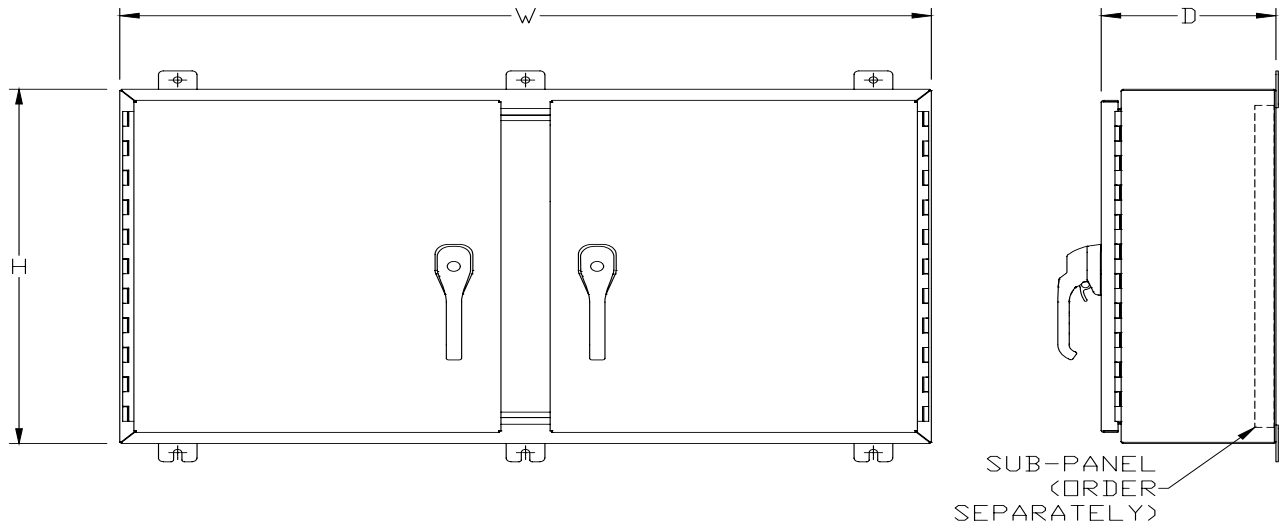
Color indicates shipping lead time in business days.

### NEMA 4, 4X and 12 Stainless Steel Two-Door Wall Mount Enclosures with 3-Point Handle

Part Number	Price	Enclosure Size HxWxD	Painted Subpanel	Stainless Steel Subpanel	Galvanized Subpanel	Perforated Subpanel
SSN4244208WF3PT	\$2,453.00	24.00 x 42.00 x 9.04 [610 x 1067 x 230]	NP4224	-	NP4224G	NP4224PP
SSN4244808WF3PT	\$2,642.00	24.00 x 48.00 x 9.04 [610 x 1219 x 230]	NP4824	-	NP4824G	NP4824PP
SSN4304210WF3PT	\$2,870.00	30.00 x 42.00 x 11.04 [762 x 1067 x 280]	NP4230	NP4230SS	NP4230G	NP4230PP
SSN4304810WF3PT	\$3,087.00	30.00 x 48.00 x 11.04 [762 x 1219 x 280]	NP4830	-	NP4830G	NP4830PP
SSN4306010WF3PT	\$3,511.00	30.00 x 60.00 x 11.04 [762 x 1524 x 280]	NP6030	-	NP6030G	NP6030PP
SSN4364212WF3PT	\$3,322.00	36.00 x 42.00 x 13.04 [914 x 1067 x 331]	NP4236	NP4236SS	NP4236G	NP4236PP
SSN4364812WF3PT	\$3,606.00	36.00 x 48.00 x 13.04 [914 x 1219 x 331]	NP4836	NP4836SS	NP4836G	NP4836PP
SSN4366012WF3PT	\$4,114.00	36.00 x 60.00 x 13.04 [914 x 1524 x 331]	NP6036	NP6036SS	NP6036G	NP6036PP
SSN4424212WF3PT	\$3,652.00	42.00 x 42.00 x 13.04 [1067 x 1067 x 331]	NPDD4242	-	NPDD4242G	NPDD4242PP
SSN4424812WF3PT	\$3,945.00	42.00 x 48.00 x 13.04 [1067 x 1219 x 331]	NPDD4842	-	NPDD4842G	NPDD4842PP
SSN4426012WF3PT	\$4,631.00	42.00 x 60.00 x 13.04 [1067 x 1524 x 331]	NPDD4260	-	NPDD4260G	NPDD4260PP
SSN4484812WF3PT	\$4,294.00	48.00 x 48.00 x 13.04 [1219 x 1219 x 331]	NPDD4848	-	NPDD4848G	NPDD4848PP

# NEMA 4, 4X and 12 Stainless Steel Two-Door Wall Mount with 3-Point Handle

## Dimensions in [mm]



*See our website: [www.AutomationDirect.com](http://www.AutomationDirect.com) for complete engineering drawings.*

# Enclosure Subpanels

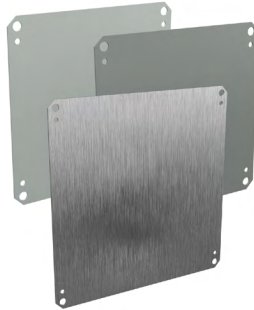


## Subpanels for Ultimate Series Wall Mount Enclosures

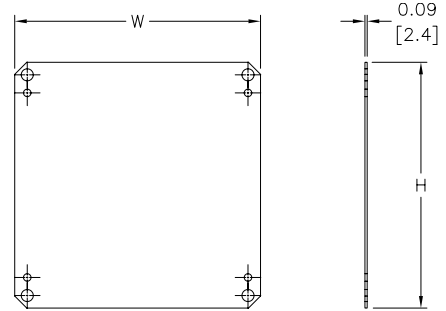
- 12 gauge steel
- Subpanels with dimensions 30" x 30" and larger are flanged on all sides. Smaller subpanels are flanged on two sides
- Painted steel subpanels are white polyester powder over phosphatized surfaces
- Galvanized subpanels have a conductive finish (no paint)

Panels listed fit all styles of N412 Ultimate Series wall mount enclosures, including slope top and disconnect enclosures.

**NOTE:** NPxxxC subpanels will not fit in older NEMA 4/12 enclosures (purchased prior to 3-23-05) that do not have a C suffix. For example: Subpanel NP1212C will not fit enclosures N412121206 or N412121206SS.



**Dimensions**  
in [mm]



Enclosure Shipping Schedule				
Same day	1 - 7 days	1 -10 days	1 - 15 days	1 - 20 days

Color indicates shipping lead time in business days.

Subpanels for Ultimate Series Wall Mount Enclosures							
Painted Steel	Price	Galvanized	Price	304 Stainless Steel	Price	Nominal Enclosure Size HxW*	Subpanel Size AxB
NP1212C	\$16.50	NP1212CG	\$16.50	—		12 x 12	10.20 x 10.20 [259 x 259]
NP1612C	\$20.00	NP1612CG	\$20.00	NP1612SSC	\$103.00	16 x 12	14.20 x 10.20 [361 x 259]
NP1616C	\$26.50	NP1616CG	\$26.50	NP1616SSC	\$71.00	16 x 16	14.20 x 14.20 [361 x 361]
NP2016C	\$26.50	NP2016CG	\$26.50	NP2016SSC	\$71.00	16 x 20 20 x 16	18.20 x 14.20 [462 x 361]
NP2020C	\$33.50	NP2020CG	\$33.50	NP2020SSC	\$94.00	20 x 20	18.20 x 18.20 [462 x 462]
NP2416C	\$37.50	NP2416CG	\$37.50	NP2416SSC	\$107.00	24 x 16	22.20 x 14.20 [564 x 361]
NP2420C	\$45.50	NP2420CG	\$45.50	NP2420SSC	\$121.00	24 x 20	22.20 x 18.20 [564 x 462]
NP2424C	\$48.00	NP2424CG	\$48.00	NP2424SSC	\$130.00	24 x 24	22.20 x 22.20 [564 x 564]
NP3020C	\$60.00	NP3020CG	\$60.00	—		30 x 20	28.20 x 18.20 [716 x 462]
NP3024C	\$57.00	NP3024CG	\$57.00	NP3024SSC	\$157.00	30 x 24	28.20 x 22.20 [716 x 564]
NP3030C	\$98.00	NP3030CG	\$98.00	NP3030SSC	\$280.00	30 x 30	28.20 x 28.20 [716 x 716]
NP3624C	\$76.00	NP3624CG	\$76.00	NP3624SSC	\$216.00	36 x 24	34.20 x 22.20 [869 x 564]
NP3630C	\$100.00	NP3630CG	\$100.00	NP3630SSC	\$267.00	36 x 30	34.20 x 28.20 [869 x 716]
NP3636C	\$119.00	NP3636CG	\$119.00	NP3636SSC	\$323.00	36 x 36	34.20 x 34.20 [869 x 869]
NP4024C	\$100.00	NP4024CG	\$100.00	—		40 x 24	38.20 x 22.20 [970 x 564]
NP4230C	\$128.00	—		—		42 x 32	40.20 x 28.20 [1021 x 716]
NP4236C	\$150.00	NP4236CG	\$150.00	NP4236SSC	\$417.00	42 x 36	40.20 x 34.20 [1021 x 869]
NP4824C	\$109.00	NP4824CG	\$109.00	—		48 x 24	46.20 x 22.20 [1173 x 564]
NP4836C	\$170.00	NP4836CG	\$170.00	NP4836SSC	\$452.00	48 x 36	46.20 x 34.20 [1173 x 869]
NP6036C	\$191.00	NP6036CG	\$191.00	NP6036SSC	\$543.00	60 x 36	58.20 x 34.20 [1478 x 869]

**Notes:** Dimensions in inches [millimeters].  
Letters in table correspond to letters on dimensional drawing.  
\*Disconnect enclosures will be up to 2 inches [51mm] wider than width dimensions in this table.