

NEMA 4, 4X, 12 and 13 Stainless Steel Single-Door Wall Mount with 3-Point Handle



Application

Provides unmatched protection for housing electrical components in highly corrosive environments. This enclosure is used in indoor and outdoor settings that are frequently wet or have constant exposure to water, other liquids, or contaminants.

A wide variety of type 316L stainless steel enclosures are available specifically for applications in food processing plants and offshore oil exploration.

Construction

- Bodies and doors fabricated from 14 gauge type 304 or 316L stainless steel. 316L stainless steel has the best corrosion resistance of the standard types of stainless steel available
- Continuously plasma welded seams
- A rolled lip around three sides of door and all sides of enclosure opening provided to exclude liquids and contaminants
- Doors are sealed with poured-in-place polyurethane gasket
- Collar studs for mounting optional subpanels
- With a 3-point 316L SS padlocking handle
- Print pocket is provided
- External mounting feet are provided for mounting enclosures
- Grounding provisions provided
- **Uses WAL3 SS series handles**

Finish

All exterior surfaces of enclosures have a smooth grained finish

Listings

- UL 508, Types 4, 4X, 12 & 13 [UL File E64791]
- CSA Certified, Types 4 & 12 [CSA File LL66078]
- NEMA/EEMAC Types 4, 4x, 12, & 13



FOR CURRENT LISTINGS, PLEASE SEE WWW.AUTOMATIONDIRECT.COM

Enclosure Shipping Schedule

Same day	1 - 7 days	1 - 10 days	1 - 15 days	1 - 20 days
----------	------------	-------------	-------------	-------------

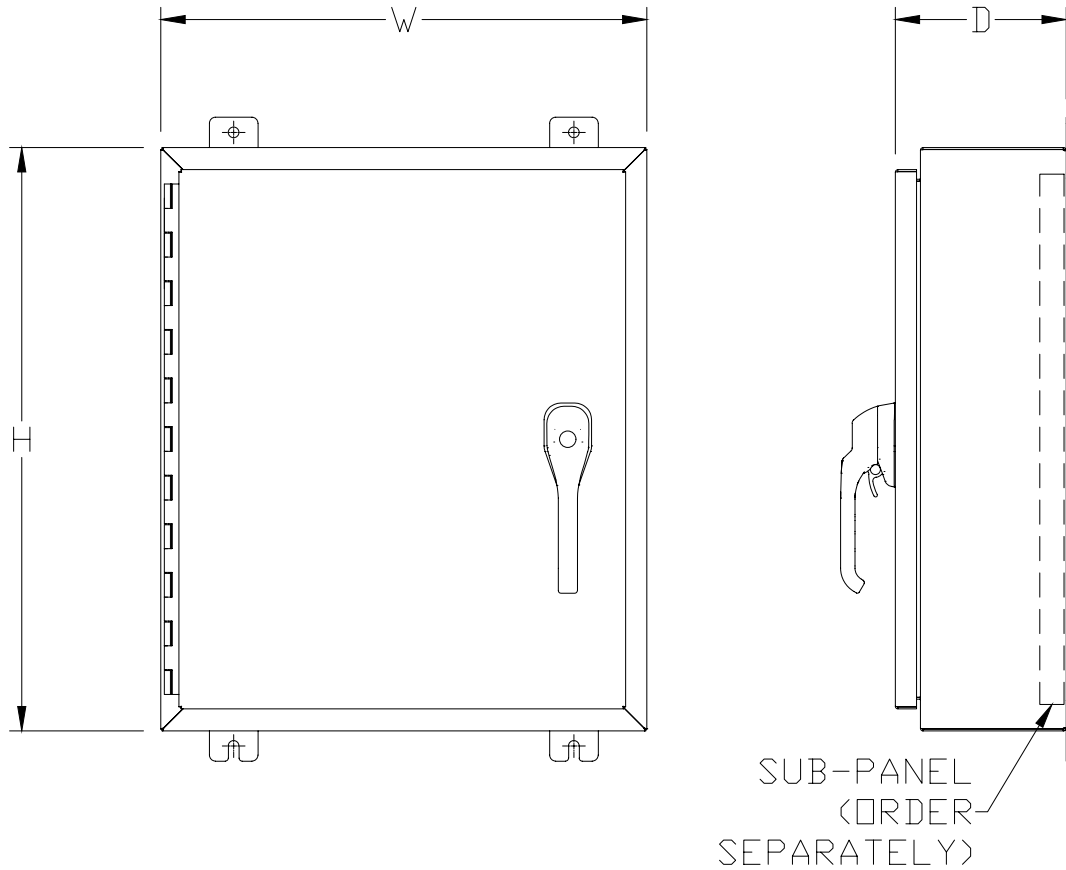
Color indicates shipping lead time in business days.

NEMA 4, 4X, 12 and 13 Stainless Steel Single-Door Wall Mount with 3-Point Handle

304 Stainless Steel	Price	316L Stainless Steel	Price	Enclosure Size HxWxD	Painted Subpanel	Stainless Subpanel	Galvanized Subpanel	Perforated Subpanel
SSN42420063PT	\$925.00	-	-	24.00 x 20.00 x 7.03 [610 x 508 x 179]	NP2420	NP2420SS	NP2420G	NP2420PP
SSN42420083PT	\$991.00	SSN42420083PTA	\$1,134.00	24.00 x 20.00 x 9.03 [610 x 508 x 229]	NP2420	NP2420SS	NP2420G	NP2420PP
SSN42420103PT	\$1,061.00	SSN42420103PTA	\$1,288.00	24.00 x 20.00 x 11.03 [610 x 610 x 280]	NP2420	NP2420SS	NP2420G	NP2420PP
SSN42424083PT	\$1,091.00	SSN42424083PTA	\$1,245.00	24.00 x 24.00 x 9.03 [610 x 610 x 229]	NP2424	NP2424SS	NP2424G	NP2424PP
SSN42424123PT	\$1,240.00	SSN42424123PTA	\$1,505.00	24.00 x 24.00 x 13.03 [610 x 610 x 331]	NP2424	NP2424SS	NP2424G	NP2424PP
SSN43024083PT	\$1,240.00	SSN43024083PTA	\$1,415.00	30.00 x 24.00 x 9.03 [762 x 610 x 229]	NP3024	NP3024SS	NP3024G	NP3024PP
SSN43024123PT	\$1,406.00	SSN43024123PTA	\$1,602.00	30.00 x 24.00 x 13.03 [762 x 610 x 331]	NP3024	NP3024SS	NP3024G	NP3024PP
SSN43030083PT	\$1,415.00	SSN43030083PTA	\$1,717.00	30.00 x 30.00 x 9.03 [762 x 762 x 229]	NP3030	NP3030SS	NP3030G	NP3030PP
SSN43624083PT	\$1,387.00	SSN43624083PTA	\$1,680.00	36.00 x 24.00 x 9.03 [914 x 610 x 229]	NP3624	NP3624SS	NP3624G	NP3624PP
SSN43630083PT	\$1,590.00	SSN43630083PTA	\$1,839.00	36.00 x 30.00 x 9.03 [914 x 762 x 229]	NP3630	NP3630SS	NP3630G	NP3630PP
SSN43630103PT	\$1,690.00	SSN43630103PTA	\$2,051.00	36.00 x 30.00 x 11.03 [914 x 762 x 280]	NP3630	NP3630SS	NP3630G	NP3630PP
SSN43630123PT	\$1,792.00	SSN43630123PTA	\$2,176.00	36.00 x 30.30 x 13.03 [914 x 762 x 331]	NP3630	NP3630SS	NP3630G	NP3630PP
SSN43636123PT	\$2,015.00	SSN43636123PTA	\$2,444.00	36.00 x 36.00 x 13.03 [914 x 914 x 331]	NP3636	NP3636SS	NP3636G	NP3636PP

NEMA 4, 4X, 12 and 13 Stainless Steel Single-Door Wall Mount with 3-Point Handle

Dimensions in [mm]



See our website: www.AutomationDirect.com for complete engineering drawings.

Enclosure Subpanels

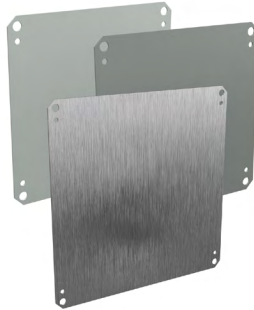


Subpanels for Ultimate Series Wall Mount Enclosures

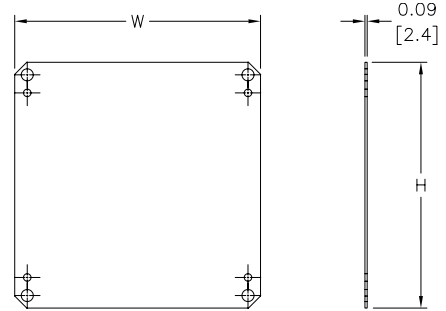
- 12 gauge steel
- Subpanels with dimensions 30" x 30" and larger are flanged on all sides. Smaller subpanels are flanged on two sides
- Painted steel subpanels are white polyester powder over phosphatized surfaces
- Galvanized subpanels have a conductive finish (no paint)

Panels listed fit all styles of N412 Ultimate Series wall mount enclosures, including slope top and disconnect enclosures.

NOTE: NPxxxC subpanels will not fit in older NEMA 4/12 enclosures (purchased prior to 3-23-05) that do not have a C suffix. For example: Subpanel NP1212C will not fit enclosures N412121206 or N412121206SS.



Dimensions in [mm]



Enclosure Shipping Schedule				
Same day	1 - 7 days	1 -10 days	1 - 15 days	1 - 20 days
Color indicates shipping lead time in business days.				

Subpanels for Ultimate Series Wall Mount Enclosures							
Painted Steel	Price	Galvanized	Price	304 Stainless Steel	Price	Nominal Enclosure Size HxW*	Subpanel Size AxB
NP1212C	\$16.50	NP1212CG	\$16.50	—		12 x 12	10.20 x 10.20 [259 x 259]
NP1612C	\$20.00	NP1612CG	\$20.00	NP1612SSC	\$103.00	16 x 12	14.20 x 10.20 [361 x 259]
NP1616C	\$26.50	NP1616CG	\$26.50	NP1616SSC	\$71.00	16 x 16	14.20 x 14.20 [361 x 361]
NP2016C	\$26.50	NP2016CG	\$26.50	NP2016SSC	\$71.00	16 x 20 20 x 16	18.20 x 14.20 [462 x 361]
NP2020C	\$33.50	NP2020CG	\$33.50	NP2020SSC	\$94.00	20 x 20	18.20 x 18.20 [462 x 462]
NP2416C	\$37.50	NP2416CG	\$37.50	NP2416SSC	\$107.00	24 x 16	22.20 x 14.20 [564 x 361]
NP2420C	\$45.50	NP2420CG	\$45.50	NP2420SSC	\$121.00	24 x 20	22.20 x 18.20 [564 x 462]
NP2424C	\$48.00	NP2424CG	\$48.00	NP2424SSC	\$130.00	24 x 24	22.20 x 22.20 [564 x 564]
NP3020C	\$60.00	NP3020CG	\$60.00	—		30 x 20	28.20 x 18.20 [716 x 462]
NP3024C	\$57.00	NP3024CG	\$57.00	NP3024SSC	\$157.00	30 x 24	28.20 x 22.20 [716 x 564]
NP3030C	\$98.00	NP3030CG	\$98.00	NP3030SSC	\$280.00	30 x 30	28.20 x 28.20 [716 x 716]
NP3624C	\$76.00	NP3624CG	\$76.00	NP3624SSC	\$216.00	36 x 24	34.20 x 22.20 [869 x 564]
NP3630C	\$100.00	NP3630CG	\$100.00	NP3630SSC	\$267.00	36 x 30	34.20 x 28.20 [869 x 716]
NP3636C	\$119.00	NP3636CG	\$119.00	NP3636SSC	\$323.00	36 x 36	34.20 x 34.20 [869 x 869]
NP4024C	\$100.00	NP4024CG	\$100.00	—		40 x 24	38.20 x 22.20 [970 x 564]
NP4230C	\$128.00	—		—		42 x 32	40.20 x 28.20 [1021 x 716]
NP4236C	\$150.00	NP4236CG	\$150.00	NP4236SSC	\$417.00	42 x 36	40.20 x 34.20 [1021 x 869]
NP4824C	\$109.00	NP4824CG	\$109.00	—		48 x 24	46.20 x 22.20 [1173 x 564]
NP4836C	\$170.00	NP4836CG	\$170.00	NP4836SSC	\$452.00	48 x 36	46.20 x 34.20 [1173 x 869]
NP6036C	\$191.00	NP6036CG	\$191.00	NP6036SSC	\$543.00	60 x 36	58.20 x 34.20 [1478 x 869]

Notes: Dimensions in inches [millimeters].
 Letters in table correspond to letters on dimensional drawing.
 *Disconnect enclosures will be up to 2 inches [51mm] wider than width dimensions in this table.