

NEMA 4, 4X, 12 and 13 Painted Stainless Steel Single-Door Wall Mount with 3-Point Handle



Application

SSN43PTW Series provides unmatched protection for housing electrical components in highly corrosive environments. These enclosures are used in indoor and outdoor settings that are frequently wet or have constant exposure to water, other liquids, or contaminants.

Finish

Painted white polyester powder inside and out over phosphatized surfaces.

Listings

- UL 508, Types 4, 4X, 12, & 13 [UL File E64791]
- CSA Certified, Types 4, 4X, 12, & 13 [CSA File LL66078]
- NEMA/EEMAC Types 4, 4X, 12, & 13

Construction

- Bodies and doors fabricated from 14 gauge type 304 stainless steel.
- Continuously welded seams ground smooth
- A rolled lip around three sides of door and all sides of enclosure opening provided to exclude liquids and contaminants
- Quick and easy to operate 3PT padlocking handle installed
- Doors are removable by pulling stainless steel continuous hinge pin
- Doors are sealed with poured-in-place polyurethane gasket
- Collar studs for mounting optional subpanels
- Removable print pocket is included
- External mounting feet are provided for mounting enclosures
- Grounding provisions provided



FOR CURRENT LISTINGS, PLEASE SEE WWW.AUTOMATIONDIRECT.COM

Enclosure Shipping Schedule

Same day	1 - 7 days	1 - 10 days
----------	------------	-------------

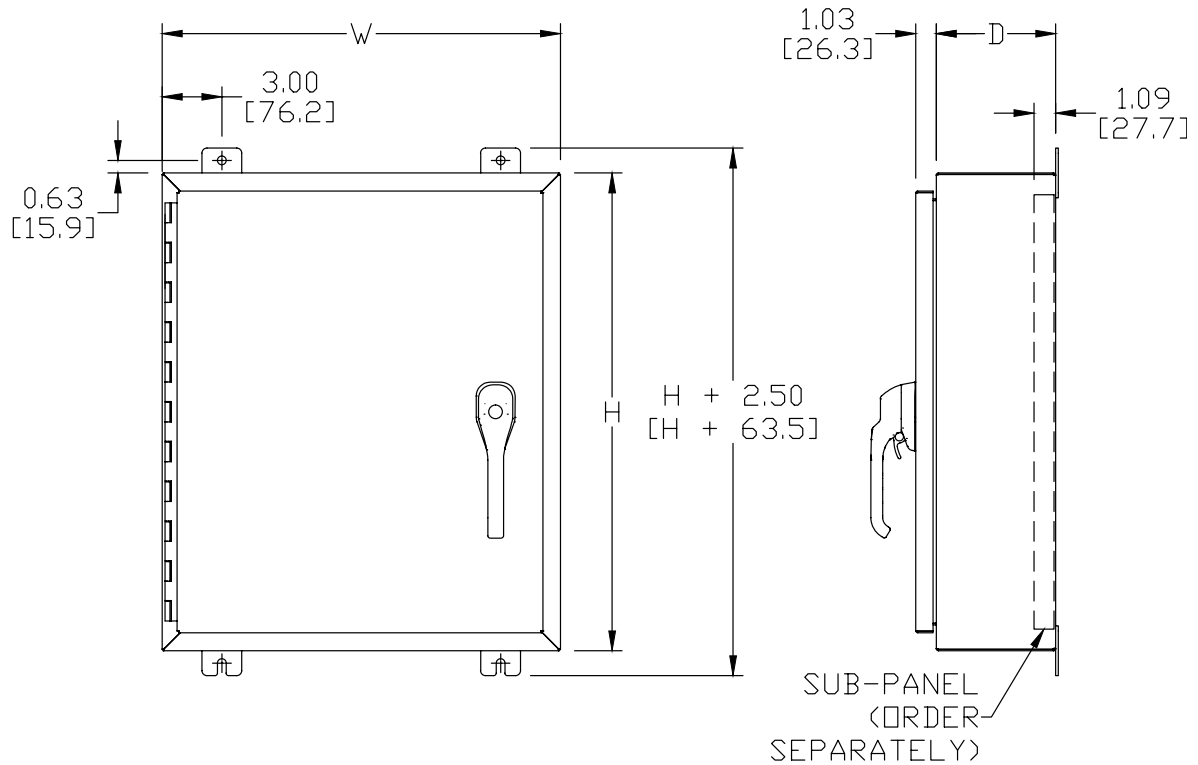
Color indicates shipping lead time in business days.

NEMA 4, 4X, 12 and 13 Painted Stainless Steel Single-Door Wall Mount Enclosures with 3-Point Handle						
Part Number	Price	Enclosure Size HxWxD	Painted Subpanel	304 Stainless Subpanel	Galvanized Subpanel	Perforated Subpanel
SSN42424083PTW	\$1,075.00	24x24x 8 [610x610x203]	NP2424	NP2424SS	NP2424G	NP2424PP
SSN42424123PTW	\$1,222.00	24x24x12 [610x610x305]	NP2424	NP2424SS	NP2424G	NP2424PP
SSN43024083PTW	\$1,222.00	30x24x 8 [762x610x203]	NP3024	NP3024SS	NP3024G	NP3024PP
SSN43630123PTW	\$1,766.00	36x30x12 [914x762x305]	NP3630	NP3630SS	NP3630G	NP3630PP
SSN43636123PTW	\$1,985.00	36x36x12 [914x914x305]	NP3636	NP3636SS	NP3636G	NP3636PP
SSN44236123PTW	\$2,202.00	42x36x12 [1067x914x305]	NP4236	NP4236SS	NP4236G	NP4236PP
SSN44836123PTW	\$2,419.00	48x36x12 [1219x914x305]	NP4836	NP4836SS	NP4836G	NP4836PP
SSN44836163PTW	\$2,674.00	48x36x16 [1219x914x406]	NP4836	NP4836SS	NP4836G	NP4836PP
SSN46036123PTW	\$2,855.00	60x36x12 [1524x914x305]	NP6036	NP6036SS	NP6036G	NP6036PP

NEMA 4, 4X, 12 and 13 Painted Stainless Steel Single-Door Wall Mount with 3-Point Handle

Dimensions

in [mm]



See our website: www.AutomationDirect.com for complete engineering drawings.

Enclosure Subpanels

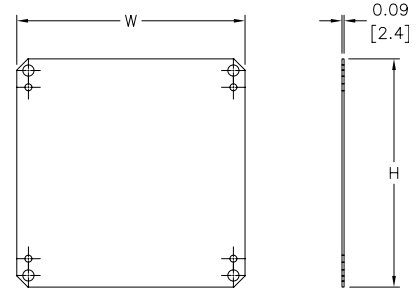


Subpanels for Ultimate Series Wall Mount Enclosures

- 12 gauge steel
- Subpanels with dimensions 30" x 30" and larger are flanged on all sides. Smaller subpanels are flanged on two sides
- Painted steel subpanels are white polyester powder over phosphatized surfaces
- Galvanized subpanels have a conductive finish (no paint)



Dimensions in [mm]



Panels listed fit all styles of N412 Ultimate Series wall mount enclosures, including slope top and disconnect enclosures.

NOTE: NPxxxxC subpanels will not fit in older NEMA 4/12 enclosures (purchased prior to 3-23-05) that do not have a C suffix. For example: Subpanel NP1212C will not fit enclosures N412121206 or N412121206SS.

Enclosure Shipping Schedule	
Same day	1 - 7 days
Color indicates shipping lead time in business days.	

Subpanels for Ultimate Series Wall Mount Enclosures							
Painted Steel	Price	Galvanized	Price	304 Stainless Steel	Price	Nominal Enclosure Size HxW*	Subpanel Size AxB
NP1212C	\$16.00	NP1212CG	\$16.00	—		12 x 12	10.20 x 10.20 [259 x 259]
NP1612C	\$19.50	NP1612CG	\$19.50	NP1612SSC	\$101.00	16 x 12	14.20 x 10.20 [361 x 259]
NP1616C	\$26.50	NP1616CG	\$26.50	NP1616SSC	\$70.00	16 x 16	14.20 x 14.20 [361 x 361]
NP2016C	\$26.50	NP2016CG	\$26.50	NP2016SSC	\$70.00	16 x 20 20 x 16	18.20 x 14.20 [462 x 361]
NP2020C	\$33.00	NP2020CG	\$33.00	NP2020SSC	\$93.00	20 x 20	18.20 x 18.20 [462 x 462]
NP2416C	\$37.00	NP2416CG	\$37.00	NP2416SSC	\$105.00	24 x 16	22.20 x 14.20 [564 x 361]
NP2420C	\$45.00	NP2420CG	\$45.00	NP2420SSC	\$119.00	24 x 20	22.20 x 18.20 [564 x 462]
NP2424C	\$47.50	NP2424CG	\$47.50	NP2424SSC	\$128.00	24 x 24	22.20 x 22.20 [564 x 564]
NP3020C	\$60.00	NP3020CG	\$60.00	—		30 x 20	28.20 x 18.20 [716 x 462]
NP3024C	\$57.00	NP3024CG	\$57.00	NP3024SSC	\$155.00	30 x 24	28.20 x 22.20 [716 x 564]
NP3030C	\$97.00	NP3030CG	\$97.00	NP3030SSC	\$276.00	30 x 30	28.20 x 28.20 [716 x 716]
NP3624C	\$75.00	NP3624CG	\$75.00	NP3624SSC	\$213.00	36 x 24	34.20 x 22.20 [869 x 564]
NP3630C	\$99.00	NP3630CG	\$99.00	NP3630SSC	\$263.00	36 x 30	34.20 x 28.20 [869 x 716]
NP3636C	\$117.00	NP3636CG	\$117.00	NP3636SSC	\$318.00	36 x 36	34.20 x 34.20 [869 x 869]
NP4024C	\$99.00	NP4024CG	\$99.00	—		40 x 24	38.20 x 22.20 [970 x 564]
NP4230C	\$126.00	—		—		42 x 32	40.20 x 28.20 [1021 x 716]
NP4236C	\$148.00	NP4236CG	\$148.00	NP4236SSC	\$411.00	42 x 36	40.20 x 34.20 [1021 x 869]
NP4824C	\$107.00	NP4824CG	\$107.00	—		48 x 24	46.20 x 22.20 [1173 x 564]
NP4836C	\$168.00	NP4836CG	\$168.00	NP4836SSC	\$446.00	48 x 36	46.20 x 34.20 [1173 x 869]
NP6036C	\$188.00	NP6036CG	\$188.00	NP6036SSC	\$535.00	60 x 36	58.20 x 34.20 [1478 x 869]

Notes: Dimensions in inches [millimeters].
Letters in table correspond to letters on dimensional drawing.
*Disconnect enclosures will be up to 2 inches [51mm] wider than width dimensions in this table.