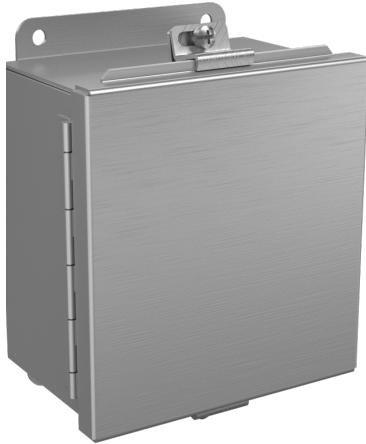


# NEMA 4, 4X, 12 and 13 Aluminum Single-Door Wall Mount



## Application

Designed as an instrument housing or junction box for electrical, electronic, or pneumatic components. It is ideal for applications where a lightweight, corrosion resistant enclosure is required.

## Construction

- Bodies and doors fabricated from .080-inch thick [2 millimeters] 5052-H32 aluminum
- Continuously welded seams ground smooth
- Closed cell oil resistant neoprene gasket
- External mounting plate, top and bottom of enclosure
- Weldnuts are provided to secure optional subpanel
- Stainless steel screws and clamps on cover to assure water tight seal
- Optional panels and terminal kits must be ordered separately
- Grounding provisions provided
- Cover removed by pulling stainless steel continuous hinge pin
- [Uses WABN4JIC clamp](#)

## Finish

- Exterior and doors of enclosures have a smooth grained finish

## Listings

- UL 50, Types 4, 4X, 12 & 13 [UL File E6924, E64791]
- NEMA/EEMAC Type 4, 4X, 12 & 13
- JIC EL-1-71



FOR CURRENT LISTINGS, PLEASE SEE [WWW.AUTOMATIONDIRECT.COM](http://WWW.AUTOMATIONDIRECT.COM)

### Enclosure Shipping Schedule

Same day	1 - 5 days	1 - 7 days	1 -10 days	1 - 15 days	1 - 20 days
----------	------------	------------	------------	-------------	-------------

Color indicates shipping lead time in business days.

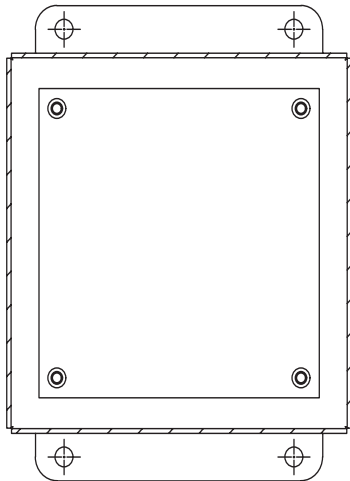
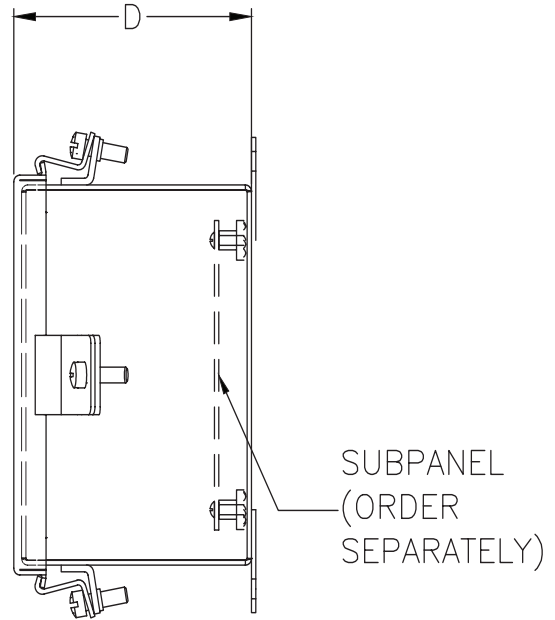
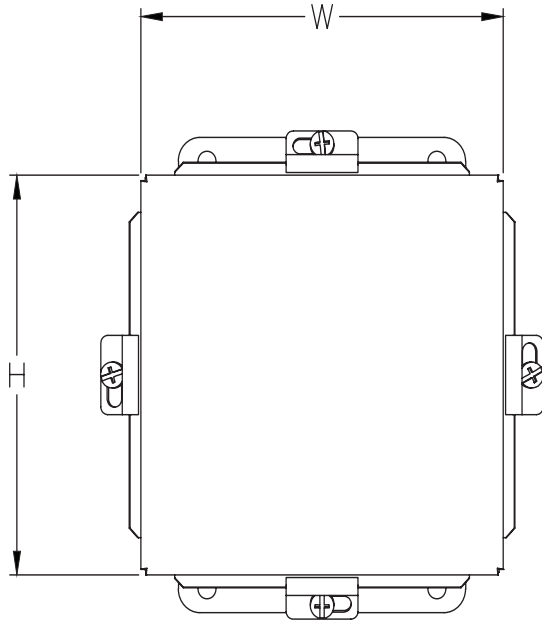
### NEMA 4, 4X, 12 and 13 Aluminum Single-Door Wall Mount

Part Number	Price	Enclosure Size HxWxD	Painted Steel Subpanel	Stainless Steel Subpanel	Galvanized Subpanel
<b>BN4060604CHAL</b>	\$151.00	6.31 x 6.31 x 4.14 [160 x 160 x 105]	<b>P0606</b>	<b>P0606SS</b>	<b>P0606G</b>
<b>BN4080603CHAL</b>	\$162.00	8.31 x 6.31 x 3.64 [211 x 160 x 92]	<b>P0806</b>	<b>P0806SS</b>	<b>P0806G</b>
<b>BN4100804CHAL</b>	\$187.00	10.31 x 8.31 x 4.14 [262 x 211 x 105]	<b>P1008</b>	<b>P1008SS</b>	<b>P1008G</b>
<b>BN4121005CHAL</b>	\$241.00	12.31 x 10.31 x 5.14 [313 x 262 x 1231]	<b>P1210</b>	<b>P1210SS</b>	<b>P1210G</b>
<b>BN4141206CHAL</b>	\$277.00	14.31 x 12.31 x 6.14 [363 x 313 x 156]	<b>P1412</b>	<b>P1412SS</b>	<b>P1412G</b>
<b>BN4161406CHAL</b>	\$321.00	16.31 x 14.31 x 6.14 [414 x 363 x 156]	<b>P1614</b>	<b>P1614SS</b>	<b>P1614G</b>

Notes: Subpanels must be ordered separately.  
 Dimensions in inches [millimeters].  
 Letters in table correspond to letters on dimensional drawings.

# NEMA 4, 4X, 12 and 13 Aluminum Single-Door Wall Mount

## Dimensions



### NOTES;

- 1.) SUBPANELS ARE 14GA STEEL
- 2.) SUBPANELS SCREWS ARE #10-32 PAN HEAD.

*See our website: [www.AutomationDirect.com](http://www.AutomationDirect.com) for complete engineering drawings.*



# Enclosure Subpanels

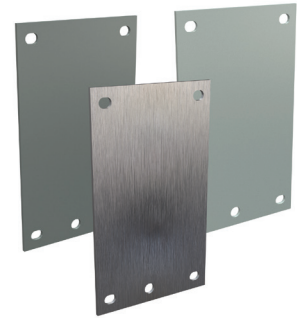
## Subpanels

Subpanels are not included with most enclosures and must be purchased separately.

The specifications table for each enclosure family list the part number of the subpanel that goes with each enclosure.

## Subpanels for Small NEMA 12 (B) and NEMA 4 (BN4) Enclosures

- 14 gauge (painted, stainless, and galvanized)
- Painted steel subpanels are white polyester powder over phosphatized surfaces
- Galvanized subpanels have a conductive finish (no paint)
- Subpanels fit the following enclosures:  
B, B\_CH, BN4, BN4\_CH, BN4\_CHQT, BN4\_SS, BN4\_CHSS, BN4\_CHSSA, BN4\_CHQTSS, BN4\_CHQTSSA ("\_" refers to dimensions).



Enclosure Shipping Schedule					
Same day	1 - 5 days	1 - 7 days	1 - 10 days	1 - 15 days	1 - 20 days

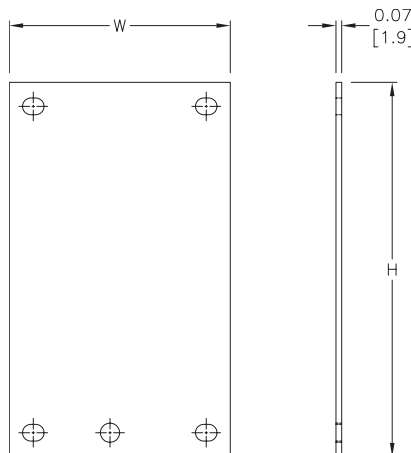
Color indicates shipping lead time in business days.

Subpanels for B and BN4 Enclosures							
Painted Steel	Price	304 Stainless Steel	Price	Galvanized	Price	Nominal Enclosure Size HxW	Subpanel Size AxB
<b>P0604</b>	\$3.50	<b>P0604SS</b>	\$12.50	<b>P0604G</b>	\$3.50	6 x 4	4.88 x 2.88 [124 x 73]
<b>P0606</b>	\$4.25	<b>P0606SS</b>	\$15.00	<b>P0606G</b>	\$4.25	6 x 6	4.88 x 4.88 [124 x 124]
<b>P0806</b>	\$5.00	<b>P0806SS</b>	\$18.00	<b>P0806G</b>	\$5.00	8 x 6	6.88 x 4.88 [175 x 124]
<b>P0808</b>	\$5.75	–	–	<b>P0808G</b>	\$5.75	8 x 8	6.88 x 6.88 [175 x 175]
<b>P1008</b>	\$6.50	<b>P1008SS</b>	\$26.00	<b>P1008G</b>	\$6.50	10 x 8	8.88 x 6.88 [226 x 175]
<b>P1010</b>	\$8.00	–	–	<b>P1010G</b>	\$8.00	10 x 10	8.88 x 8.88 [226 x 226]
<b>P1206</b>	\$6.50	–	–	<b>P1206G</b>	\$6.50	12 x 6	10.88 x 4.88 [276 x 124]
<b>P1210</b>	\$9.25	<b>P1210SS</b>	\$36.50	<b>P1210G</b>	\$9.25	12 x 10	10.88 x 8.88 [276 x 226]
<b>P1212</b>	\$11.00	<b>P1212SS</b>	\$42.50	<b>P1212G</b>	\$11.00	12 x 12	10.88 x 10.88 [276 x 276]
<b>P1408</b>	\$9.00	–	–	<b>P1408G</b>	\$9.00	14 x 8	12.88 x 6.88 [327 x 175]
<b>P1412</b>	\$12.00	<b>P1412SS</b>	\$49.00	<b>P1412G</b>	\$12.00	14 x 12	12.88 x 10.88 [327 x 276]
<b>P1610</b>	\$12.00	–	–	<b>P1610G</b>	\$12.00	16 x 10	14.88 x 8.88 [378 x 226]
<b>P1614</b>	\$16.00	<b>P1614SS</b>	\$64.00	<b>P1614G</b>	\$16.00	16 x 14	14.88 x 12.88 [378 x 327]

Notes: Dimensions in inches [millimeters].  
Letters in table correspond to letters on dimensional drawing.

### Dimensions

in [mm]



See our website: [www.AutomationDirect.com](http://www.AutomationDirect.com) for complete engineering drawings.