

NEMA 3, 4, 4X and 12 Stainless Steel Freestanding Single-Door with 3-Point Handle



Application

Designed to house electrical and electronic controls, terminals, and instruments in areas that are regularly hosed down or are otherwise very wet. Enclosures are also suitable for outdoor applications.

Construction

- Bodies and doors fabricated from 12 gauge 304 stainless steel
- Continuously welded seams ground smooth
- “Uni-strut” mounting channels are welded horizontally to interior body sides [top, bottom and center]
- Optional swing, half, full and rack panels can be mounted anywhere along “uni-strut” channel
- Rolled lip around three sides of door and along top of enclosure’s opening excludes liquids and contaminants from entering
- 3-point 316L SS padlocking handle
- Heavy gauge continuous hinge
- Doors are removable by pulling stainless steel continuous hinge pin

- Removable print pocket is provided
- Heavy duty removable lifting eyes
- Doors are sealed with poured-in-place polyurethane gasket
- Grounding provisions provided
- [Uses WAL3 SS series handles](#)

Finish

Smooth-grained stainless steel finish

Listings

- UL 508, Types 3, 4, 4X & 12 [UL File E64791]
- CSA Certified, Type 4, 4X & 12 [CSA File LL66078]
- NEMA/EEMAC Types 3, 4, 4X & 12



FOR CURRENT LISTINGS, PLEASE SEE WWW.AUTOMATIONDIRECT.COM

Enclosure Shipping Schedule

Same day	1 - 7 days	1 -10 days	1 - 15 days	1 - 20 days
----------	------------	------------	-------------	-------------

Color indicates shipping lead time in business days.

NEMA 3, 4, 4X and 12 Stainless Steel Freestanding Single-Door Enclosures with 3-Point Handle

Part Number	Price	Enclosure Size HxWxD
WA602418SSFSN43PT	\$4,095.00	60.06 x 24.06 x 18.06 [1526 x 611 x 459]
WA603624SSFSN43PT	\$5,429.00	60.06 x 36.06 x 24.06 [1526 x 916 x 611]
WA722418SSFSN43PT	\$4,540.00	72.06 x 24.06 x 18.06 [1830 x 611 x 459]
WA722424SSFSN43PT	\$5,046.00	72.06 x 24.06 x 24.06 [1830 x 611 x 611]
WA723018SSFSN43PT	\$5,015.00	72.06 x 30.06 x 18.06 [1830 x 764 x 459]
WA723024SSFSN43PT	\$5,559.00	72.06 x 30.06 x 24.06 [1830 x 764 x 611]
WA723618SSFSN43PT	\$5,493.00	72.06 x 36.06 x 18.06 [1830 x 916 x 459]
WA723624SSFSN43PT	\$6,065.00	72.06 x 36.06 x 24.06 [1830 x 916 x 611]
WA723630SSFSN43PT	\$6,638.00	72.06 x 36.06 x 30.06 [1830 x 916 x 764]
WA723636SSFSN43PT	\$7,216.00	72.06 x 36.06 x 36.06 [1830 x 916 x 916]
WA902420SSFSN43PT	\$5,409.00	90.06 x 24.06 x 20.06 [2288 x 611 x 510]
WA903620SSFSN43PT	\$6,578.00	90.06 x 36.06 x 20.06 [2288 x 916 x 510]
WA903624SSFSN43PT	\$7,030.00	90.06 x 36.06 x 24.06 [2288 x 916 x 611]
WA903636SSFSN43PT	\$8,366.00	90.06 x 36.06 x 36.06 [2288 x 916 x 916]

Note: Subpanels must be ordered separately.
Dimensions in inches [millimeters];
Letters in table correspond to letters on dimensional drawings.

NEMA 3, 4, 4X and 12 Stainless Steel Freestanding Single-Door with 3-Point Handle

Enclosure Shipping Schedule

Same day	1 - 7 days	1 - 10 days	1 - 15 days	1 - 20 days
----------	------------	-------------	-------------	-------------

Color indicates shipping lead time in business days.

Standard Subpanels for NEMA 3, 4, 4X & 12 SS Freestanding Single-Door Enclosures with 3-Point Handle

Enclosures	Full Height		Half Height	
	Painted Steel	Galvanized	Painted Steel	Galvanized
WA602418SSFSN43PT	WA60P24F1	WA60P24F1G	WA60P24F2	WA60P24F2G
WA603624SSFSN43PT	WA60P36F1	WA60P36F1G	WA60P36F2	WA60P36F2G
WA722418SSFSN43PT	WA72P24F1	WA72P24F1G	WA72P24F2	WA72P24F2G
WA722424SSFSN43PT	WA72P24F1	WA72P24F1G	WA72P24F2	WA72P24F2G
WA723018SSFSN43PT	WA72P30F1	WA72P30F1G	WA72P30F2	WA72P30F2G
WA723024SSFSN43PT	WA72P30F1	WA72P30F1G	WA72P30F2	WA72P30F2G
WA723618SSFSN43PT	WA72P36F1	WA72P36F1G	WA72P36F2	WA72P36F2G
WA723624SSFSN43PT	WA72P36F1	WA72P36F1G	WA72P36F2	WA72P36F2G
WA723630SSFSN43PT	WA72P36F1	WA72P36F1G	WA72P36F2	WA72P36F2G
WA723636SSFSN43PT	WA72P36F1	WA72P36F1G	WA72P36F2	WA72P36F2G
WA902420SSFSN43PT	WA90P24F1	WA90P24F1G	WA90P24F2	WA90P24F2G
WA903620SSFSN43PT	WA90P36F1	WA90P36F1G	WA90P36F2	WA90P36F2G
WA903624SSFSN43PT	WA90P36F1	WA90P36F1G	WA90P36F2	WA90P36F2G
WA903636SSFSN43PT	WA90P36F1	WA90P36F1G	WA90P36F2	WA90P36F2G

Swing-Out Panels for NEMA 3, 4, 4X & 12 SS Freestanding Single-Door Enclosures with 3-Point Handle

Enclosures	Full Height		Half Height	
	Painted Steel	Galvanized	Painted Steel	Galvanized
WA602418SSFSN43PT	WA60SP24F3	WA60SP24F3G	WA60SP24F4	WA60SP24F4G
WA603624SSFSN43PT	WA60SP36F3	WA60SP36F3G	WA60SP36F4	WA60SP36F4G
WA722418SSFSN43PT	WA72SP24F3	WA72SP24F3G	WA72SP24F4	WA72SP24F4G
WA722424SSFSN43PT	WA72SP24F3	WA72SP24F3G	WA72SP24F4	WA72SP24F4G
WA723018SSFSN43PT	WA72SP30F3	WA72SP30F3G	WA72SP30F4	WA72SP30F4G
WA723024SSFSN43PT	WA72SP30F3	WA72SP30F3G	WA72SP30F4	WA72SP30F4G
WA723618SSFSN43PT	WA72SP36F3	WA72SP36F3G	WA72SP36F4	WA72SP36F4G
WA723624SSFSN43PT	WA72SP36F3	WA72SP36F3G	WA72SP36F4	WA72SP36F4G
WA723630SSFSN43PT	WA72SP36F3	WA72SP36F3G	WA72SP36F4	WA72SP36F4G
WA723636SSFSN43PT	WA72SP36F3	WA72SP36F3G	WA72SP36F4	WA72SP36F4G
WA902420SSFSN43PT	-	-	-	-
WA903620SSFSN43PT	WA90SP36F3	WA90SP36F3G	WA90SP36F4	WA90SP36F4G
WA903624SSFSN43PT	WA90SP36F3	WA90SP36F3G	WA90SP36F4	WA90SP36F4G
WA903636SSFSN43PT	WA90SP36F3	WA90SP36F3G	WA90SP36F4	WA90SP36F4G

NEMA 3, 4, 4X and 12 Stainless Steel Freestanding Single-Door with 3-Point Handle

Enclosure Shipping Schedule				
Same day	1 - 7 days	1 - 10 days	1 - 15 days	1 - 20 days

Color indicates shipping lead time in business days.

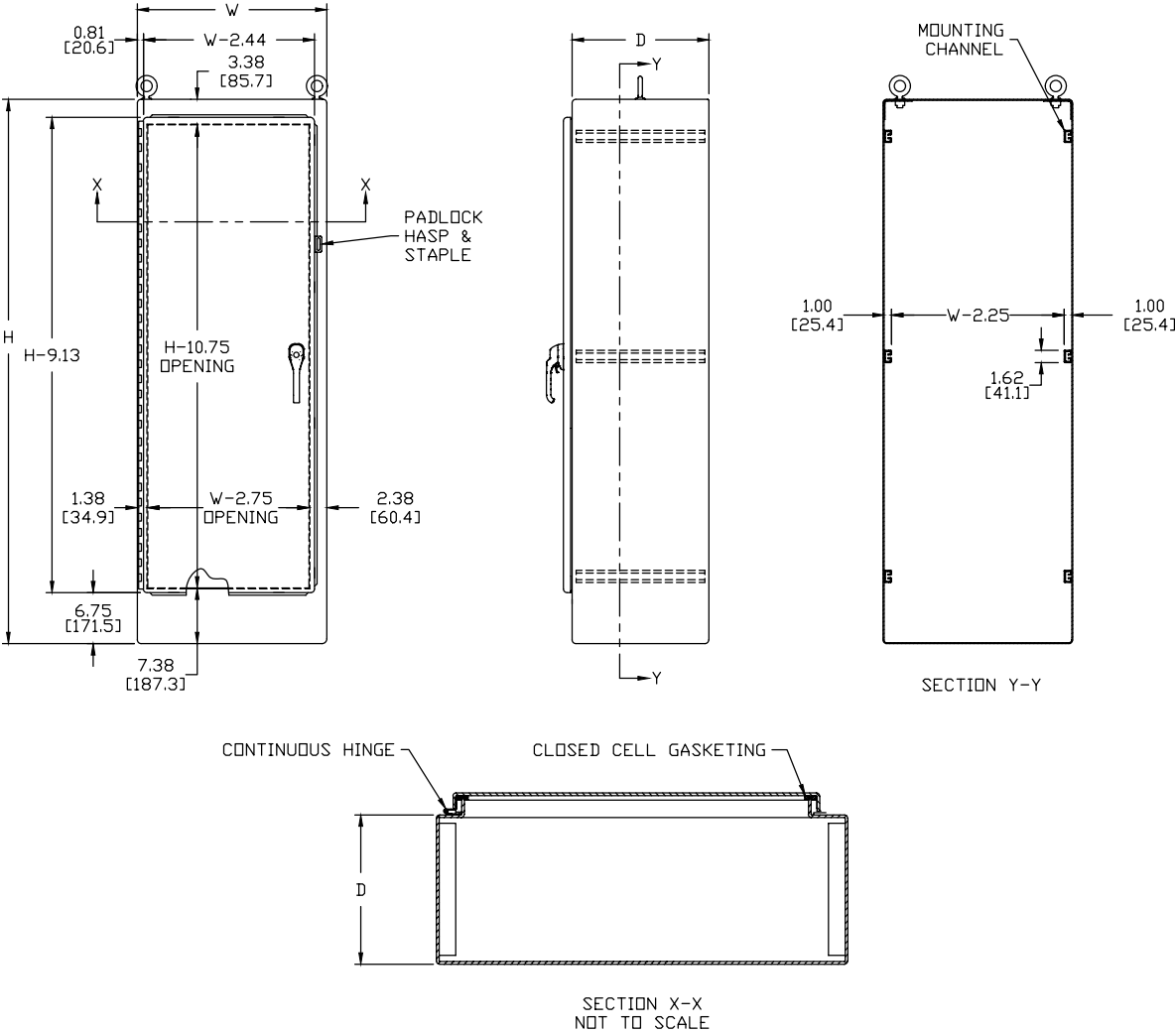
Side-Mount Panels for NEMA 3, 4, 4X & 12 SS Freestanding Single-Door Enclosures with 3-Point Handle		
Enclosures	Painted Steel	Galvanized
WA602418SSFSN43PT	WA60SMP14	WA60SMP14G
WA603624SSFSN43PT	WA60SMP14	WA60SMP14G
WA722418SSFSN43PT	WA72SMP14	WA72SMP14G
WA722424SSFSN43PT	WA72SMP14, WA72SMP20	WA72SMP14G, WA72SMP20G
WA723018SSFSN43PT	WA72SMP14	WA72SMP14G
WA723024SSFSN43PT	WA72SMP14, WA72SMP20	WA72SMP14G, WA72SMP20G
WA723618SSFSN43PT	WA72SMP14	WA72SMP14G
WA723624SSFSN43PT	WA72SMP14, WA72SMP20	WA72SMP14G, WA72SMP20G
WA723630SSFSN43PT	WA72SMP14, WA72SMP20	WA72SMP14G, WA72SMP20G
WA723636SSFSN43PT	WA72SMP14, WA72SMP20	WA72SMP14G
WA902420SSFSN43PT	WA90SMP14	WA90SMP14G
WA903620SSFSN43PT	WA90SMP14	WA90SMP14G
WA903624SSFSN43PT	WA90SMP14, WA90SMP20	WA90SMP14G, WA90SMP20G
WA903636SSFSN43PT	WA90SMP14, WA90SMP20	WA90SMP14G, WA90SMP20G

Enclosures	Swing-Out Rack	Center Post Support
WA602418SSFSN43PT	-	-
WA603624SSFSN43PT	-	-
WA722418SSFSN43PT	-	-
WA722424SSFSN43PT	-	-
WA723018SSFSN43PT	WA7230SOF19	-
WA723024SSFSN43PT	WA7230SOF19	-
WA723618SSFSN43PT	WA7236SOF19	-
WA723624SSFSN43PT	WA7236SOF19	-
WA723630SSFSN43PT	WA7236SOF19	-
WA723636SSFSN43PT	WA7236SOF19	-
WA902420SSFSN43PT	-	-
WA903620SSFSN43PT	WA9036SOF19	-
WA903624SSFSN43PT	WA9036SOF19	-
WA903636SSFSN43PT	WA9036SOF19	-

NEMA 3, 4, 4X and 12 Stainless Steel Freestanding Single-Door with 3-Point Handle

Dimensions

in [mm]



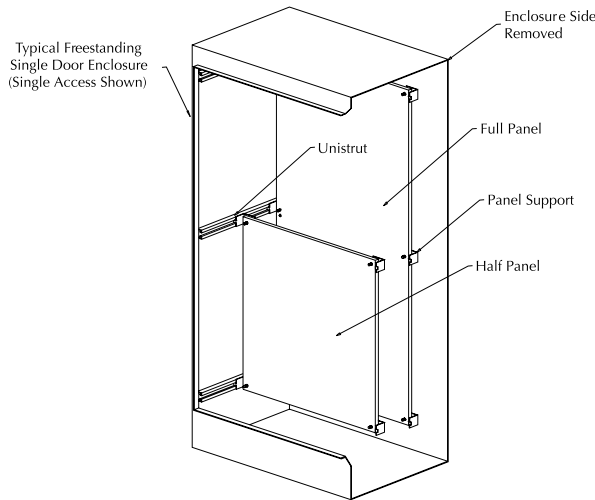
See our website: www.AutomationDirect.com for complete engineering drawings.

WA-F1/F2 Panels for Single-Door Freestanding Enclosures



Description

- Panels for single-door single-access and single-door dual-access, freestanding NEMA 12, and freestanding NEMA 4 enclosures
- Can be positioned anywhere along horizontal depth-wise mounting channels
- Half-height panels can be located in the upper or lower portion of the enclosure
- Mounting hardware is furnished with each panel
- Painted steel subpanels are painted white polyester powder over phosphatized surfaces
- Galvanized subpanels have a conductive finish (no paint)
- May be used in two-door enclosures along with other freestanding accessories



Painted Steel	Price	Galvanized	Price	Steel Gauge	Panel Size AxB	Subpanel Type
WA60P24F1	\$223.00	WA60P24F1G	\$223.00	12	48.00 x 20.00 [1219 x 508]	Full
WA60P24F2	\$149.00	WA60P24F2G	\$149.00	10	24.88 x 20.00 [632 x 508]	Half
WA60P36F1	\$288.00	WA60P36F1G	\$288.00	12	48.00 x 32.00 [1219 x 813]	Full
WA60P36F2	\$181.00	WA60P36F2G	\$181.00	12	24.88 x 32.00 [632 x 813]	Half
WA72P24F1	\$249.00	WA72P24F1G	\$249.00	12	60.00 x 20.00 [1524 x 508]	Full
WA72P24F2	\$160.00	WA72P24F2G	\$160.00	12	30.88 x 20.00 [784 x 508]	Half
WA72P30F1	\$290.00	WA72P30F1G	\$290.00	12	60.00 x 26.00 [1524 x 660]	Full
WA72P30F2	\$181.00	WA72P30F2G	\$181.00	10	30.88 x 26.00 [784 x 660]	Half
WA72P36F1	\$331.00	WA72P36F1G	\$331.00	12	60.00 x 32.00 [1524 x 813]	Full
WA72P36F2	\$202.00	WA72P36F2G	\$202.00	12	30.88 x 32.00 [784 x 813]	Half
WA90P24F1	\$290.00	WA90P24F1G	\$290.00	12	78.00 x 20.00 [1981 x 508]	Full
WA90P24F2	\$181.00	WA90P24F2G	\$181.00	10	39.88 x 20.00 [1013 x 508]	Half
WA90P36F1	\$389.00	WA90P36F1G	\$389.00	12	78.00 x 32.00 [1981 x 813]	Full
WA90P36F2	\$235.00	WA90P36F2G	\$235.00	10	39.88 x 32.00 [1013 x 813]	Half

Notes: Dimensions in inches [millimeters].
 If used in a two-door enclosure, a center panel support must be ordered.
 Suffix F1= full panel, F2 = half panel

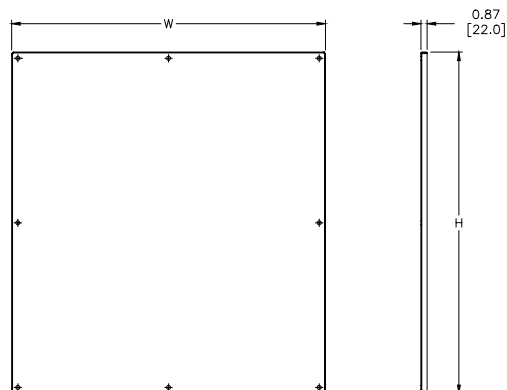
Dimensions

in [mm]

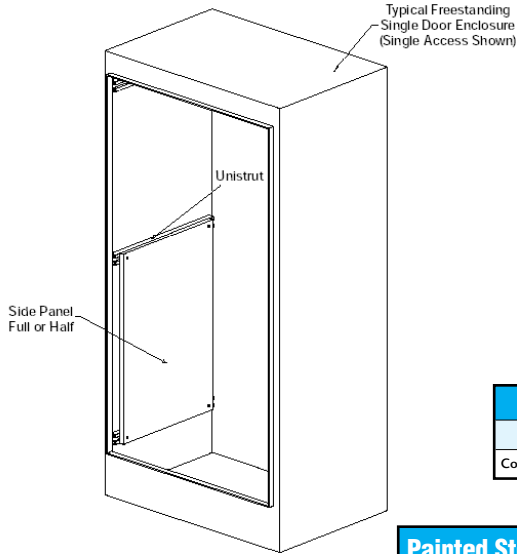
Enclosure Shipping Schedule				
Same day	1 - 7 days	1 - 10 days	1 - 15 days	1 - 20 days

Color indicates shipping lead time in business days.

See our website: www.AutomationDirect.com for complete engineering drawings.



WA-SMP Series Side-Mount Panels for Freestanding Enclosures



Description

- Panels for freestanding NEMA 4 and freestanding NEMA 12 enclosures
- Panels are fabricated from 12 gauge steel
- They provide extra mounting space on the sides of the enclosure
- Mounting hardware is furnished with each panel
- Painted steel subpanels are painted white polyester powder over phosphatized surfaces
- Galvanized subpanels have a conductive finish (no paint)
- Panels attach securely to mounting channels

Enclosure Shipping Schedule				
Same day	1 - 7 days	1 - 10 days	1 - 15 days	1 - 20 days

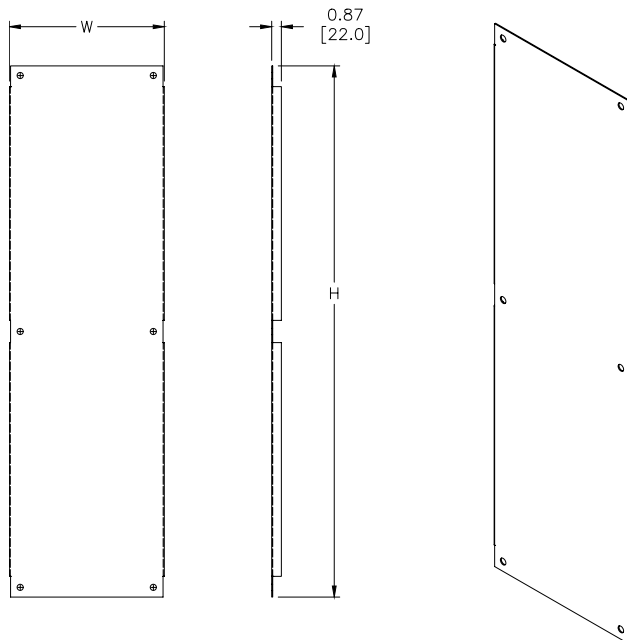
Color indicates shipping lead time in business days.

Painted Steel	Price	Galvanized	Price	Panel Size AxB
WA60SMP14	\$135.00	WA60SMP14G	\$135.00	48.00 x 14.00 [1219 x 356]
WA72SMP14	\$153.00	WA72SMP14G	\$153.00	60.00 x 14.00 [1524 x 356]
WA72SMP20	\$188.00	WA72SMP20G	\$188.00	60.00 x 20.00 [1524 x 508]
WA90SMP14	\$220.00	WA90SMP14G	\$220.00	78.00 x 14.00 [1981 x 356]
WA90SMP20	\$231.00	WA90SMP20G	\$231.00	78.00 x 20.00 [1981 x 508]

Note: Dimensions in inches (millimeters)

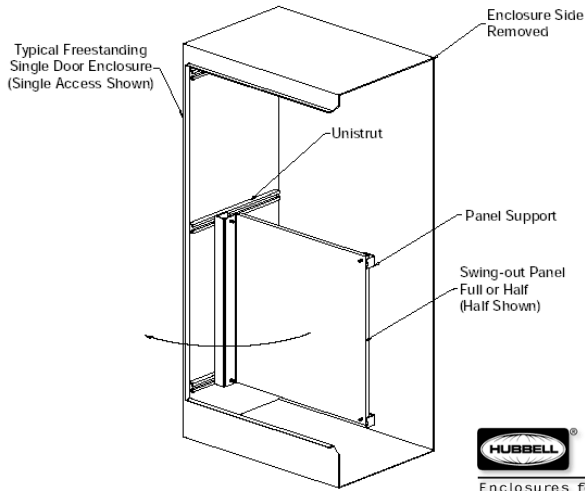
Dimensions

in [mm]



See our website: www.AutomationDirect.com for complete engineering drawings.

WASP-F3/F4 Series Accessory Swing-Out Panels For Freestanding Enclosures



Description

- Panels for freestanding NEMA 12 enclosures and freestanding NEMA 4 enclosures
- Full-height and half-height swing-out panels are available
- Half-height panels can be located in the upper or lower portion of the enclosure
- Mounting can be on either side of the enclosure
- Painted steel subpanels are painted white polyester powder over phosphatized surfaces
- Galvanized subpanels have a conductive finish (no paint)
- May be used in two-door enclosures along with other freestanding accessories
- Fabricated from 12 gauge steel
- Mounting hardware is furnished with each panel



Enclosure Shipping Schedule				
Same day	1 - 7 days	1 - 10 days	1 - 15 days	1 - 20 days

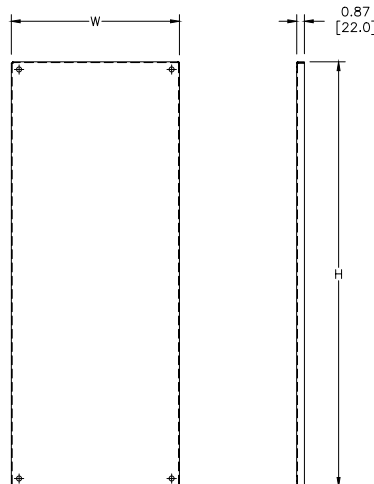
Color indicates shipping lead time in business days.

Painted Steel	Price	Galvanized	Price	Panel Size AxB	Subpanel Type
WA60SP24F3	\$360.00	WA60SP24F3G	\$360.00	48.00 x 19.00 [1219 x 483]	Full
WA60SP24F4	\$253.00	WA60SP24F4G	\$253.00	24.88 x 19.00 [632 x 483]	Half
WA60SP36F3	\$444.00	WA60SP36F3G	\$444.00	48.00 x 31.00 [1219 x 787]	Full
WA60SP36F4	\$294.00	WA60SP36F4G	\$294.00	24.88 x 31.00 [632 x 787]	Half
WA72SP24F3	\$437.00	WA72SP24F3G	\$437.00	60.00 x 19.00 [1524 x 483]	Full
WA72SP24F4	\$296.00	WA72SP24F4G	\$296.00	30.88 x 19.00 [784 x 483]	Half
WA72SP30F3	\$506.00	WA72SP30F3G	\$506.00	60.00 x 25.00 [1524 x 635]	Full
WA72SP30F4	\$335.00	WA72SP30F4G	\$335.00	30.88 x 25.00 [784 x 635]	Half
WA72SP36F3	\$576.00	WA72SP36F3G	\$576.00	60.00 x 31.00 [1524 x 787]	Full
WA72SP36F4	\$373.00	WA72SP36F4G	\$373.00	30.88 x 31.00 [784 x 787]	Half
WA90SP36F3	\$684.00	WA90SP36F3G	\$684.00	78.00 x 31.00 [1981 x 787]	Full
WA90SP36F4	\$432.00	WA90SP36F4G	\$432.00	39.88 x 31.00 [1013 x 787]	Half

Notes: Dimensions in inches [millimeters].
 Note 1: If used in a two-door enclosure, a center panel support must be ordered.
 Note 2: Suffix F3 =full panel, F4 =half panel

Dimensions

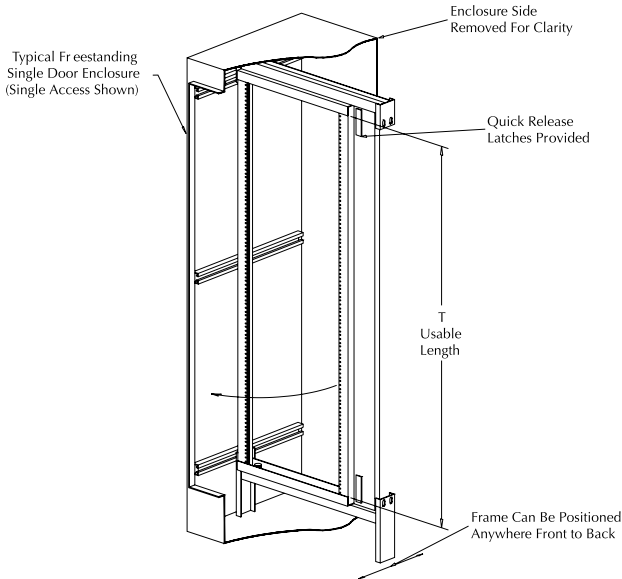
in [mm]



See our website: www.AutomationDirect.com for complete engineering drawings.

Enclosure Accessories - Rack Mounting

Swing-Out Rack Mounting Frames For Freestanding Enclosures



Fabricated from 10-gauge steel, these swing-out rack mounting frames are available for mounting 19-inch rack-mounted equipment. Mounting holes are tapped with #10-32 threads spaced per E.I.A. standard.

Frames are painted with white polyester powder.

Note: If used in a two-door enclosure, a center panel support must be ordered.

Mounting Frames	Price	Fits Enclosure HxW	Usable Angle Length "T"	Wt. [lb]
WA7230SOF19	\$450.00	72 x 30 [1829 x 762]	57.88 [1470]	61
WA7236SOF19	\$486.00	72x36 [1829x914]	57.88 [1470]	73
WA9036SOF19	\$513.00	90x36 [2286x914]	75.38 [1915]	87

Note: Dimensions in inches [millimeters]

Rack Mounting Angles for Ultimate Series

Rack mounting angles allow the installation of 19-inch rack equipment in 24-inch wide NEMA 412 enclosures. "L" shaped thru-hole angles may be fixed to the enclosure flange, or used in combination with the Adjustable Depth Mounting Kits. Thru-hole diameters are 0.281in. Brackets are fabricated from 14 ga. galvanized steel. Mounting hardware and two angles are provided.

Note: W1032N clip nuts must be purchased separately.



Rack Mounting Angles	Price	For Enclosure Height in [mm]	Wt. [lb]
HFWRA20C	\$74.00	20 [508]	3
HFWRA24C	\$78.00	24 [609]	
HFWRA30C	\$94.00	30 [762]	4
HFWRA36C	\$105.00	36 [914]	
HFWRA48C	\$124.00	48 [1219]	7

Console Rack Angles

Angle brackets for mounting 19-inch rack equipment in the WC14B console.



Console Rack Angle	Price	Description	Wt. [lb]
WC14R	\$153.00	Hubbell-Wiegmann enclosure rack angle, white polyester powder finish, for WC14B enclosure. For use on WC series consoles but provides standard rack hole spacing for only WC14B. Includes mounting hardware. Package of 2.	11

Rack Mounting Angle For Wall Mounts

Designed for mounting 19-inch rack mounted equipment in 24-inch wide NEMA 12, NEMA 4 and NEMA 412 wall mount enclosures. Small holes are tapped # 10-32. Sealing washers are also provided to maintain original NEMA rating after installation.

Rack Mounting Angle	Price	For Enclosure Height in [mm]	Description	Wt. [lb]
WARAK24	\$80.00	24 [609]	Enclosure rack mounting angle, white polyester powder finish. Includes mounting hardware. Package of 2.	8
WARAK30	\$100.00	30 [762]		10
WARAK36	\$121.00	36 [914]		12

Enclosure Shipping Schedule	
1 - 10 days	1 - 15 days

Color indicates shipping lead time in business days.

See our website: www.AutomationDirect.com for complete engineering drawings.