

NEMA 1 Large Single-Door Wall Mount with 1/4-Turn Latch



Applications

Designed for use in control and instrumentation applications in areas which do not require oil-tight and dust-tight specifications.

Construction

- Bodies and doors fabricated from 14 gauge steel
- Continuous hinged doors
- Doors are easily removable by pulling the hinge pin
- Collar studs provided for mounting optional subpanels
- External mounting feet provided
- Doors are furnished standard with flush mount quarter-turn latch, which can be operated with a coin or screwdriver
- Grounding provisions provided
- [Uses NIC14 series latches](#)

Finish

- ANSI 61 gray polyester powder light texture inside and out over phosphatized surfaces
- Painted steel and perforated subpanels are white polyester powder over phosphatized surfaces
- Galvanized stainless steel subpanels are a conductive finish [unpainted]

Listings

- UL 50, Type 1 [UL Files E6924]
- CSA Certified, Type 1 [CSA File LL66078]
- NEMA/EEMAC Type 1



Note: Do NOT use NPxxxxC subpanels in NEMA 1, NEMA 4 and 4X, and NEMA 12 enclosures. For example: Subpanel NP1612C will not fit enclosure WA161206FM [NP1612 is the correct subpanel]. Only use NPxxxx subpanels in NEMA 1, NEMA 4 and 4X, and NEMA 12 enclosures.

Enclosure Shipping Schedule

Same day	1 - 7 days
----------	------------

Color indicates shipping lead time in business days.

NEMA 1 Large Single-Door Wall Mount with 1/4-Turn Latch

Part Number	Price	Enclosure Size HxWxD	Painted Steel Subpanel*	Galvanized Subpanel	Perforated Subpanel	Stainless Steel Subpanel
N1C304209	\$501.00	42.41 x 30.37 x 9.11 [1077 x 771 x 231]	NP4230	NP4230G	NP4230PP	NP4230SS
N1C304213	\$567.00	42.41 x 30.37 x 13.11 [1077 x 771 x 333]	NP4230	NP4230G	NP4230PP	NP4230SS
N1C364209	\$571.00	42.41 x 36.37 x 9.11 [1077 x 924 x 231]	NP4236	NP4236G	NP4236PP	NP4236SS
N1C364809	\$632.00	48.41 x 36.37 x 9.11 [1230 x 924 x 231]	NP4836	NP4836G	NP4836PP	NP4836SS
N1C364811	\$670.00	48.41 x 36.37 x 11.11 [1230 x 924 x 282]	NP4836	NP4836G	NP4836PP	NP4836SS
N1C364817	\$784.00	48.41 x 36.37 x 17.11 [1230 x 924 x 435]	NP4836	NP4836G	NP4836PP	NP4836SS

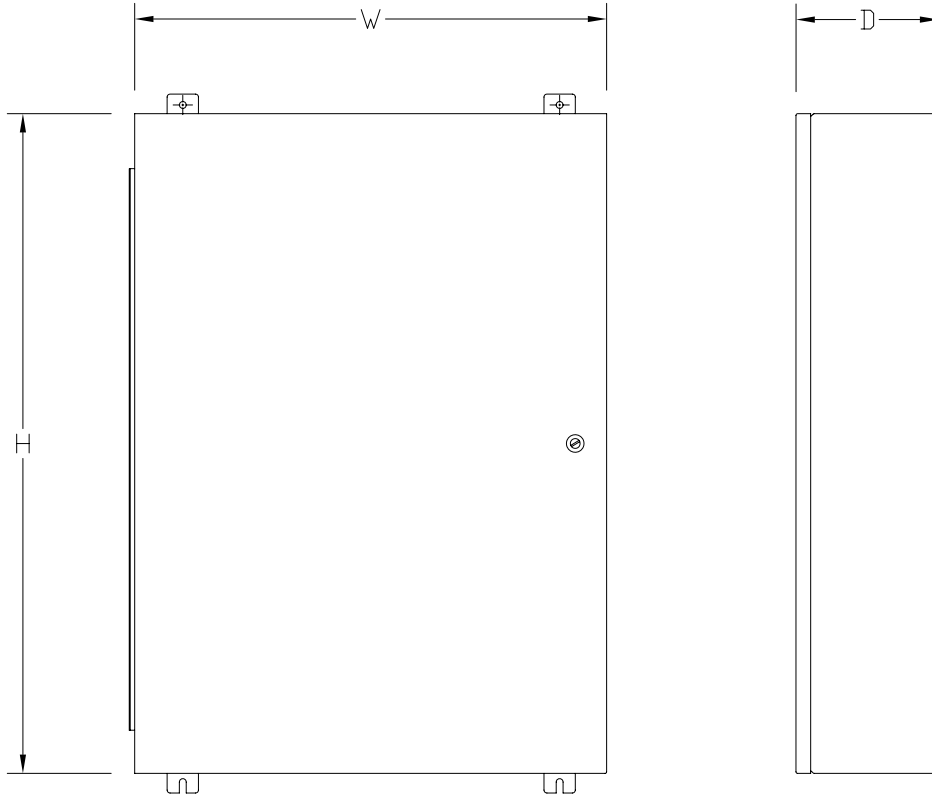
Notes: Subpanels must be ordered separately. Dimensions in inches [millimeters].

**Do NOT use NPxxxxC subpanels in N1Cxxxxx enclosures. For example, subpanel NP4230C will not fit enclosure N1C304209.*

NEMA 1 Large Single-Door Wall Mount with 1/4-Turn Latch



Dimensions in [mm]



See our website: www.AutomationDirect.com for complete engineering drawings.

Enclosure Subpanels



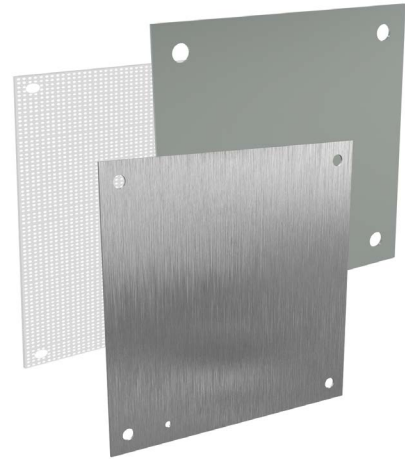
Subpanels for NEMA 1, 12, 4 and 4X Wall Mount Enclosures and WC9 NEMA 12 Operator Consoles

- 12 gauge steel (perforated subpanels are 14 gauge)
- Subpanels with any side over 17" have 3/4" flange on all sides
- Painted steel and perforated subpanels are white polyester powder over phosphatized surfaces
- Galvanized subpanels have a conductive finish (no paint)

Panels listed fit the following enclosures:

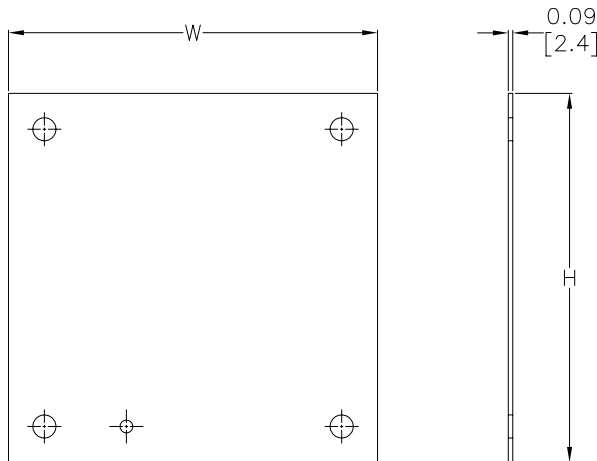
- NEMA 1 large (N1C, 42in width and wider)
- NEMA 12 single door wall mount (N12)
- NEMA 12 two door wall mount (WA_WF)
- NEMA 12 single door flush wall mount (WA_FM)
- NEMA 4 (N4) and 4X (SSN) single door wall mount
- NEMA 12 operator consoles (WC9)
- NEMA 12 Wall Disconnect (SDN12_PL & ABN12)
- NEMA 4 & 4X Wall Mount Disconnect (SSN4 & SSN4X)

NOTE: Use NPxxxx subpanels in NEMA 1, NEMA 4 and 4X, and NEMA 12 enclosures only. Do NOT use NPxxxx subpanels in N412 Ultimate Series enclosures with a C in the suffix.



Dimensions

in [mm]



Perforated panels have 0.13" diameter holes at 0.25" spacing.

NOTE:
SUBPANELS LARGER THAN
20 X 20 HAVE (2) 0.31"
GROUND HOLES.

See our website: www.AutomationDirect.com for complete engineering drawings.

Enclosures Subpanels



Enclosure Shipping Schedule	
Same day	1 - 7 days
Color indicates shipping lead time in business days.	

Subpanels for NEMA 1, 12, 4 and 4X Wall Mount Enclosures and WC9 NEMA 12 Operator Consoles									
Painted Steel	Price	Galvanized	Price	Perforated	Price	304 Stainless Steel	Price	Nominal Enclosure Size HxW	Subpanel Size AxB
NP1212	\$16.00	NP1212G	\$16.00	-		-		12 x 12	9.00 x 9.00 [229 x 229]
NP1224	\$30.50	NP1224G	\$30.50	-		-		24 x 12	9.00 x 21.00 [229 x 533]
NP1612	\$19.50	NP1612G	\$19.50	NP1612PP	\$181.00	NP1612SS	\$52.00	12 x 16 16 x 12	13.00 x 9.00 [330 x 229]
NP1616	\$26.50	NP1616G	\$26.50	NP1616PP	\$181.00	NP1616SS	\$70.00	16 x 16	13.00 x 13.00 [330 x 330]
NP2012	\$28.50	NP2012G	\$28.50	-		-		12 x 20 20 x 12	17.00 x 9.00 [432 x 229]
NP2016	\$26.50	NP2016G	\$26.50	NP2016PP	\$181.00	NP2016SS	\$70.00	20 x 16 16 x 20	17.00 x 13.00 [432 x 330]
NP2020	\$33.00	NP2020G	\$33.00	NP2020PP	\$181.00	NP2020SS	\$93.00	20 x 20	17.00 x 17.00 [432 x 432]
NP2416	\$37.00	NP2416G	\$37.00	-		NP2416SS	\$105.00	24 x 16	21.00 x 13.00 [533 x 330]
NP2420	\$45.00	NP2420G	\$45.00	NP2420PP	\$181.00	NP2420SS	\$119.00	20 x 24 24 x 20	21.00 x 17.00 [533 x 432]
NP2424	\$47.50	NP2424G	\$47.50	NP2424PP	\$181.00	NP2424SS	\$128.00	24 x 24	21.00 x 21.00 [533 x 533]
NP3016	\$49.00	NP3016G	\$49.00	-		-		30 x 16	27.00 x 13.00 [686 x 330]
NP3020	\$60.00	NP3020G	\$60.00	-		NP3020SS	\$164.00	30 x 20	27.00 x 17.00 [686 x 432]
NP3024	\$57.00	NP3024G	\$57.00	NP3024PP	\$181.00	NP3024SS	\$155.00	24 x 30 30 x 24	27.00 x 21.00 [686 x 533]
NP3030	\$97.00	NP3030G	\$97.00	NP3030PP	\$181.00	NP3030SS	\$276.00	30 x 30	27.00 x 27.00 [686 x 686]
NP3624	\$75.00	NP3624G	\$75.00	NP3624PP	\$181.00	NP3624SS	\$213.00	36 x 24	33.00 x 21.00 [838 x 533]
NP3630	\$99.00	NP3630G	\$99.00	NP3630PP	\$181.00	NP3630SS	\$263.00	30 x 36 36 x 30	33.00 x 27.00 [838 x 686]
NP3636	\$117.00	NP3636G	\$117.00	NP3636PP	\$181.00	NP3636SS	\$318.00	36 x 36	33.00 x 33.00 [838 x 838]
NP4024	\$99.00	NP4024G	\$99.00	-		-		40 x 24	37.00 x 21.00 [940 x 533]
NP4224	\$95.00	NP4224G	\$95.00	-		-		42 x 24	39.00 x 21.00 [991 x 533]
NP4230	\$126.00	NP4230G	\$126.00	NP4230PP	\$181.00	NP4230SS	\$343.00	42 x 30	39.00 x 27.00 [991 x 686]
NP4236	\$148.00	NP4236G	\$148.00	NP4236PP	\$181.00	NP4236SS	\$411.00	42 x 36	39.00 x 33.00 [991 x 838]
NP4824	\$107.00	NP4824G	\$107.00	-		-		48 x 24	45.00 x 21.00 [1143 x 533]
NP4830	\$141.00	NP4830G	\$141.00	-		-		48 x 30	45.00 x 27.00 [1143 x 686]
NP4836	\$168.00	NP4836G	\$168.00	NP4836PP	\$181.00	NP4836SS	\$446.00	48 x 36	45.00 x 33.00 [1143 x 838]
NP6030	\$174.00	NP6030G	\$174.00	-		-		60 x 30	57.00 x 27.00 [1448 x 686]
NP6036	\$206.00	NP6036G	\$206.00	NP6036PP	\$181.00	NP6036SS	\$588.00	60 x 36	57.00 x 33.00 [1448 x 838]
NP7230	\$200.00	NP7230G	\$200.00	-		-		72 x 30	69.00 x 27.00 [1753 x 686]
NP7236	\$245.00	NP7236G	\$245.00	-		-		72 x 36	69.00 x 33.00 [1753 x 838]

Notes: Dimensions in inches [millimeters].

Letters in table correspond to letters on dimensional drawing.

Disconnect enclosures will be up to 2 inches [51mm] wider than width dimensions in this table.

See our website: www.AutomationDirect.com for complete engineering drawings.