

WC9 NEMA 12 and 13 Operator Consoles



Applications

Designed to house electrical and electronic controls, instruments and components. Heavy duty construction provides protection from dirt, dust, oil and water. Sloping front control panel provides an ideal surface for mounting pushbuttons, pilot lights, meters and switches. Interior components can be mounted on panels located on the sides and back of the enclosure. (Subpanels are optional.)

Construction

- Bodies and doors fabricated from 14 gauge steel
- Continuously welded seams ground smooth, without knockouts or holes
- Control panel attached with continuous hinge along bottom edge and secured with captive screws, threaded into sealed wells
- Door stops provided to hold control panel open
- Closed cell neoprene gasket
- Collar studs provided for mounting one, two or three optional panels
- Grounding provisions provided
- 3-point keylocking handle is provided on the front access door
- [Uses WAL2 series handles and WAL2KEY replacement key](#)

Finish

- ANSI 61 gray polyester powder inside and out over phosphatized surfaces
- Optional side and back panels are white polyester powder over phosphatized surfaces
- Optional castor kits can be used on any enclosure to provide mobility.
- Castor kit includes two swivel casters and two stationary casters along with all necessary hardware

Listings

- UL 508, Types 12 & 13 [UL File E64791]
- CSA Certified, Type 12 & 13 [CSA File LL66078]
- NEMA/EEMAC Types 12 & 13



Enclosure Shipping Schedule

Same day	1-7 days	1 -10 days
----------	----------	------------

Color indicates shipping lead time in business days.

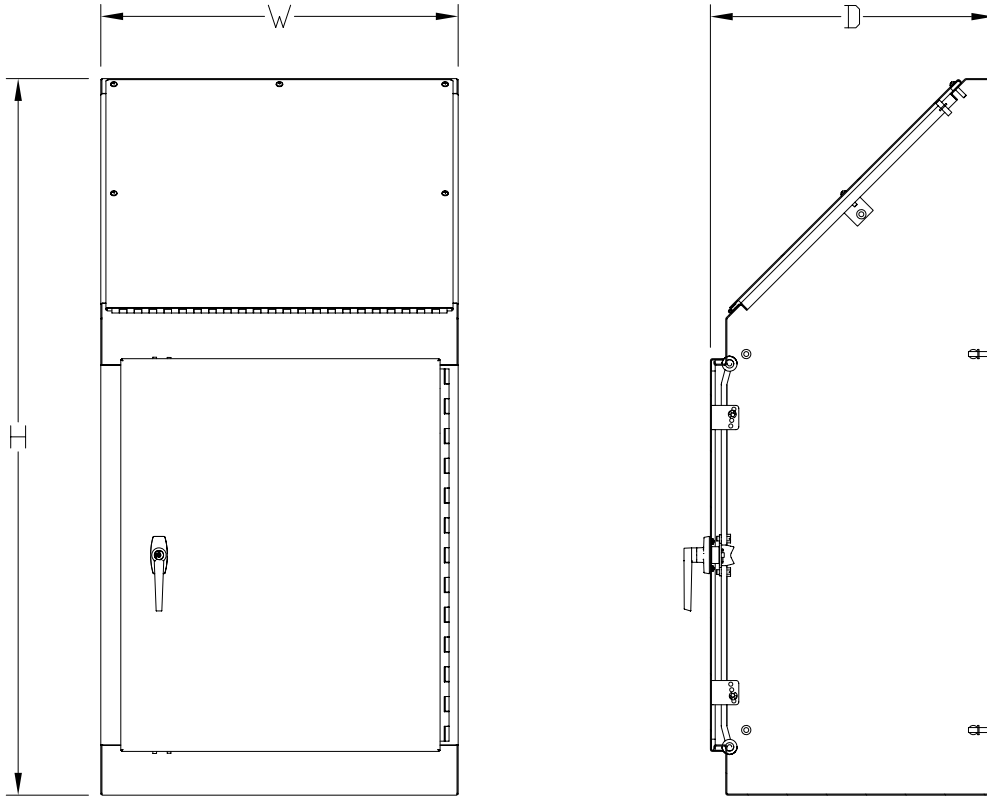
WC9 NEMA 12 and 13 Operator Consoles

Console	Price	Size HxWxD	Subpanel*	Side-mount Panel*	Caster Kit*
WC924B	\$1,224.00	48.13 x 24.00 x 19.03 [1223 x 610 x 483]	NP3020	NP3020	WC10C
WC936B	\$1,501.00	48.13 x 36.00 x 19.03 [1223 x 914 x 483]	NP3030	NP3020	WC10C

*Notes: Dimensions in inches [millimeters].
Letters in table correspond to letters on dimensional drawings.
Subpanels, side-mount panels and caster kits must be ordered separately.

WC9 NEMA 12 and 13 Operator Consoles

Dimensions



See our website: www.AutomationDirect.com for complete engineering drawings.

Enclosure Subpanels



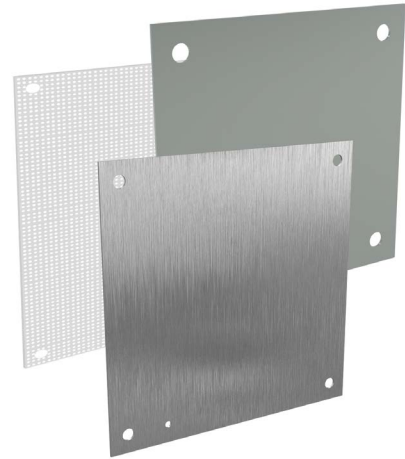
Subpanels for NEMA 1, 12, 4 and 4X Wall Mount Enclosures and WC9 NEMA 12 Operator Consoles

- 12 gauge steel (perforated subpanels are 14 gauge)
- Subpanels with any side over 17" have 3/4" flange on all sides
- Painted steel and perforated subpanels are white polyester powder over phosphatized surfaces
- Galvanized subpanels have a conductive finish (no paint)

Panels listed fit the following enclosures:

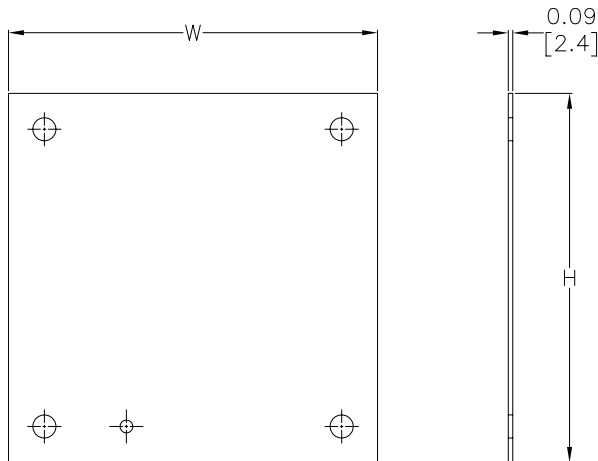
- NEMA 1 large (N1C, 42in width and wider)
- NEMA 12 single door wall mount (N12)
- NEMA 12 two door wall mount (WA_WF)
- NEMA 12 single door flush wall mount (WA_FM)
- NEMA 4 (N4) and 4X (SSN) single door wall mount
- NEMA 12 operator consoles (WC9)
- NEMA 12 Wall Disconnect (SDN12_PL & ABN12)
- NEMA 4 & 4X Wall Mount Disconnect (SSN4 & SSN4X)

NOTE: Use NPxxxx subpanels in NEMA 1, NEMA 4 and 4X, and NEMA 12 enclosures only. Do NOT use NPxxxx subpanels in N412 Ultimate Series enclosures with a C in the suffix.



Dimensions

in [mm]



Perforated panels have 0.13" diameter holes at 0.25" spacing.

NOTE:
SUBPANELS LARGER THAN
20 X 20 HAVE (2) 0.31"
GROUND HOLES.

See our website: www.AutomationDirect.com for complete engineering drawings.

Enclosures Subpanels



Enclosure Shipping Schedule	
Same day	1 - 7 days
Color indicates shipping lead time in business days.	

Subpanels for NEMA 1, 12, 4 and 4X Wall Mount Enclosures and WC9 NEMA 12 Operator Consoles									
Painted Steel	Price	Galvanized	Price	Perforated	Price	304 Stainless Steel	Price	Nominal Enclosure Size HxW	Subpanel Size AxB
NP1212	\$16.00	NP1212G	\$16.00	-		-		12 x 12	9.00 x 9.00 [229 x 229]
NP1224	\$30.50	NP1224G	\$30.50	-		-		24 x 12	9.00 x 21.00 [229 x 533]
NP1612	\$19.50	NP1612G	\$19.50	NP1612PP	\$181.00	NP1612SS	\$52.00	12 x 16 16 x 12	13.00 x 9.00 [330 x 229]
NP1616	\$26.50	NP1616G	\$26.50	NP1616PP	\$181.00	NP1616SS	\$70.00	16 x 16	13.00 x 13.00 [330 x 330]
NP2012	\$28.50	NP2012G	\$28.50	-		-		12 x 20 20 x 12	17.00 x 9.00 [432 x 229]
NP2016	\$26.50	NP2016G	\$26.50	NP2016PP	\$181.00	NP2016SS	\$70.00	20 x 16 16 x 20	17.00 x 13.00 [432 x 330]
NP2020	\$33.00	NP2020G	\$33.00	NP2020PP	\$181.00	NP2020SS	\$93.00	20 x 20	17.00 x 17.00 [432 x 432]
NP2416	\$37.00	NP2416G	\$37.00	-		NP2416SS	\$105.00	24 x 16	21.00 x 13.00 [533 x 330]
NP2420	\$45.00	NP2420G	\$45.00	NP2420PP	\$181.00	NP2420SS	\$119.00	20 x 24 24 x 20	21.00 x 17.00 [533 x 432]
NP2424	\$47.50	NP2424G	\$47.50	NP2424PP	\$181.00	NP2424SS	\$128.00	24 x 24	21.00 x 21.00 [533 x 533]
NP3016	\$49.00	NP3016G	\$49.00	-		-		30 x 16	27.00 x 13.00 [686 x 330]
NP3020	\$60.00	NP3020G	\$60.00	-		NP3020SS	\$164.00	30 x 20	27.00 x 17.00 [686 x 432]
NP3024	\$57.00	NP3024G	\$57.00	NP3024PP	\$181.00	NP3024SS	\$155.00	24 x 30 30 x 24	27.00 x 21.00 [686 x 533]
NP3030	\$97.00	NP3030G	\$97.00	NP3030PP	\$181.00	NP3030SS	\$276.00	30 x 30	27.00 x 27.00 [686 x 686]
NP3624	\$75.00	NP3624G	\$75.00	NP3624PP	\$181.00	NP3624SS	\$213.00	36 x 24	33.00 x 21.00 [838 x 533]
NP3630	\$99.00	NP3630G	\$99.00	NP3630PP	\$181.00	NP3630SS	\$263.00	30 x 36 36 x 30	33.00 x 27.00 [838 x 686]
NP3636	\$117.00	NP3636G	\$117.00	NP3636PP	\$181.00	NP3636SS	\$318.00	36 x 36	33.00 x 33.00 [838 x 838]
NP4024	\$99.00	NP4024G	\$99.00	-		-		40 x 24	37.00 x 21.00 [940 x 533]
NP4224	\$95.00	NP4224G	\$95.00	-		-		42 x 24	39.00 x 21.00 [991 x 533]
NP4230	\$126.00	NP4230G	\$126.00	NP4230PP	\$181.00	NP4230SS	\$343.00	42 x 30	39.00 x 27.00 [991 x 686]
NP4236	\$148.00	NP4236G	\$148.00	NP4236PP	\$181.00	NP4236SS	\$411.00	42 x 36	39.00 x 33.00 [991 x 838]
NP4824	\$107.00	NP4824G	\$107.00	-		-		48 x 24	45.00 x 21.00 [1143 x 533]
NP4830	\$141.00	NP4830G	\$141.00	-		-		48 x 30	45.00 x 27.00 [1143 x 686]
NP4836	\$168.00	NP4836G	\$168.00	NP4836PP	\$181.00	NP4836SS	\$446.00	48 x 36	45.00 x 33.00 [1143 x 838]
NP6030	\$174.00	NP6030G	\$174.00	-		-		60 x 30	57.00 x 27.00 [1448 x 686]
NP6036	\$206.00	NP6036G	\$206.00	NP6036PP	\$181.00	NP6036SS	\$588.00	60 x 36	57.00 x 33.00 [1448 x 838]
NP7230	\$200.00	NP7230G	\$200.00	-		-		72 x 30	69.00 x 27.00 [1753 x 686]
NP7236	\$245.00	NP7236G	\$245.00	-		-		72 x 36	69.00 x 33.00 [1753 x 838]

Notes: Dimensions in inches [millimeters].
 Letters in table correspond to letters on dimensional drawing.
 Disconnect enclosures will be up to 2 inches [51mm] wider than width dimensions in this table.

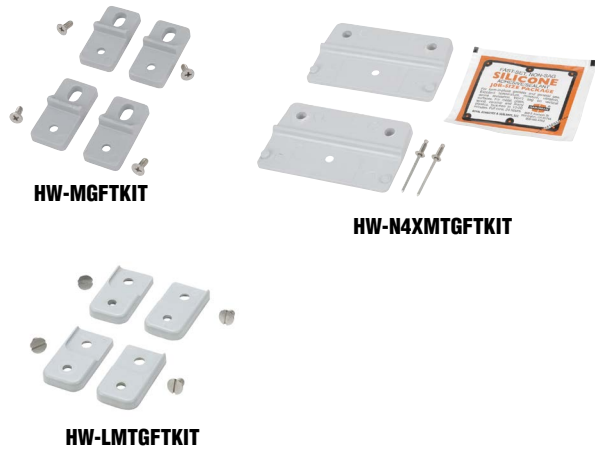
See our website: www.AutomationDirect.com for complete engineering drawings.

Enclosure Accessories - Mounting Feet and Casters



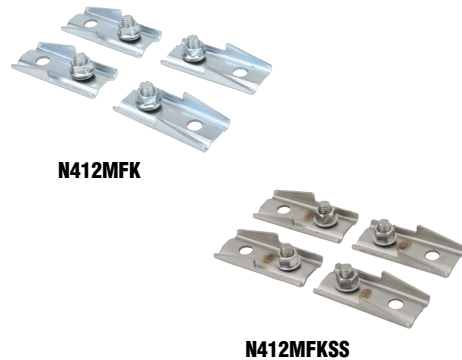
Mounting Feet for Premier, Slim Line, Classic, and In-Line Series Enclosures

Mounting Foot Kit	Price	Description	Wt. [oz]
HW-MGFTKIT	\$13.50	Hubbell-Wiegmann mounting feet kit, fiberglass-reinforced polyester, for use on Premier series non-metallic enclosures. Includes (4) mounting feet and mounting hardware.	1
HW-N4XMTGFTKIT	\$25.50	Hubbell-Wiegmann mounting feet kit, fiberglass-reinforced polyester, for use on Slim Line and In-line series non-metallic enclosures. Includes (2) mounting feet, mounting hardware and silicone adhesive/sealant. (Fits 4-inch wide HW-N4Xxxx, HW-N4XxPB and HW-N4XxPB-22 series enclosures only.)	1
HW-LMTGFTKIT	\$25.508.00	Hubbell-Wiegmann mounting feet kit, fiberglass-reinforced polyester, for use on Classic series non-metallic enclosures. Includes (4) mounting feet and mounting hardware.	1



Mounting Feet for Ultimate Series Enclosures

Mounting Feet	Price	Description	Wt. [lb]
N412MFK	\$17.25	Hubbell-Wiegmann mounting feet kit, plated finish. For use on NEMA 412 Ultimate series enclosures. Includes (4) mounting feet, mounting hardware and sealing washers.	4
N412MFKSS	\$48.00	Hubbell-Wiegmann mounting feet kit, 304 stainless steel. For use on NEMA 412 Ultimate series enclosures. Includes (4) mounting feet, mounting hardware and sealing washers.	4



Casters

Casters can be used on any enclosure to provide mobility. Caster kits include mounting plates designed to fit Hubbell-Wiegmann WC10 and WC12 consoles, but can be adapted to fit other enclosures.

Caster Kit	Price	Description	Wt. [lb]	Capacity [lb]
WC10C	\$173.00	Hubbell-Wiegmann caster kit, for WC10 consoles. Includes 4 zinc-plated steel casters (2 swivel, 2 stationary), 2 ANSI 61 gray mounting plates and hardware.	4	200
WC12C	\$173.00	Hubbell-Wiegmann caster kit, for WC12 consoles. Includes 4 zinc-plated steel casters (2 swivel, 2 stationary), 2 ANSI 61 gray mounting plates and hardware.	4	200



Enclosure Shipping Schedule		
Same day	1 - 7 days	1-10 days
Color indicates shipping lead time in business days.		