

NEMA 12 and 13 Single-Door Wall Mount



Application

Designed to house electrical and electronic controls, instruments, components and associated wiring. Hinged doors provide easy access. Designed for indoor use in protecting components from dust, dirt, oil and water.

Finish

- ANSI-61 gray polyester powder light texture inside and outside over phosphatized surfaces.

Listings

- UL 508, Types 12 and 13 [UL file E64791]
- CSA Certified, Type 12 [CSA file LL66078]
- Meets NEMA/EEMAC Types 12 and 13 requirements
- JIC EL-1-71



Construction

- Bodies and doors fabricated from 14 gauge steel
- Continuously plasma welded seams
- Rolled lip on three sides of door and all sides of enclosure opening is provided to exclude liquids and contaminants
- Quick and easy-to-operate door clamps are provided
- Doors removable by pulling heavy gauge continuous hinge pin
- Hasp and staple for padlocking
- Doors are sealed with poured in place polyurethane gasket
- Collar studs provided for mounting optional subpanels
- External mounting feet
- Grounding provisions provided
- Optional subpanels must be ordered separately



Enclosure Shipping Schedule

Same day	1 - 7 days	1 -10 days
----------	------------	------------

Color indicates shipping lead time in business days.

NOTE: Do NOT use NPxxxxC subpanels in NEMA 1, NEMA 4 and 4X, and NEMA 12 enclosures. For example: Subpanel NP1612C will not fit enclosure WA161206FM [NP1612 is the correct subpanel]. Only use NPxxxx subpanels in NEMA 1, NEMA 4 and 4X, and NEMA 12 enclosures.

NEMA 12 and 13 Single-Door Wall Mount							
Part Number	Price	Enclosure Size HxWxD	No. of Clamps	Painted Steel Subpanel	Stainless Steel Subpanel	Galvanized Steel Subpanel	Perforated Subpanel
N12122406	\$274.00	12x24x6 [305x610x152]	2	NP1224	-	NP1224G	-
N12122408	\$274.00	12x24x8 [305x610x203]	2	NP1224	-	NP1224G	-
N12161206	\$208.00	16x12x6 [406x305x152]	2	NP1612	NP1612SS	NP1612G	NP1612PP
N12161208	\$200.00	16x12x8 [406x305x203]	2	NP1612	NP1612SS	NP1612G	NP1612PP
N12161210	\$252.00	16x12x10 [406x305x254]	2	NP1612	NP1612SS	NP1612G	NP1612PP
N12161606	\$248.00	16x16x6 [406x406x152]	2	NP1616	NP1616SS	NP1616G	NP1616PP
N12161608	\$261.00	16x16x8 [406x406x203]	2	NP1616	NP1616SS	NP1616G	NP1616PP
N12162006	\$266.00	16x20x6 [406x508x152]	2	NP2016	NP2016SS	NP2016G	NP2016PP
N12162008	\$280.00	16x20x8 [406x508x203]	2	NP2016	NP2016SS	NP2016G	NP2016PP
N12201206	\$244.00	20x12x6 [508x305x152]	2	NP2012	-	NP2012G	-
N12201208	\$257.00	20x12x8 [508x305x203]	2	NP2012	-	NP2012G	-
N12201606	\$220.00	20x16x6 [508x406x152]	2	NP2016	NP2016SS	NP2016G	NP2016PP
N12201608	\$253.00	20x16x8 [508x406x203]	2	NP2016	NP2016SS	NP2016G	NP2016PP
N12201610	\$295.00	20x16x10 [508x406x254]	2	NP2016	NP2016SS	NP2016G	NP2016PP
N12201612	\$309.00	20x16x12 [508x406x305]	2	NP2016	NP2016SS	NP2016G	NP2016PP
N12202006	\$259.00	20x20x6 [508x508x152]	2	NP2020	NP2020SS	NP2020G	NP2020PP
N12202008	\$303.00	20x20x8 [508x508x203]	2	NP2020	NP2020SS	NP2020G	NP2020PP

Note: Subpanels must be ordered separately. Dimensions in inches [millimeters]; letters in table correspond to letters on dimensional drawings.

NEMA 12 and 13 Single-Door Wall Mount

NEMA 12 and 13 Single-Door Wall Mount [cont.]							
Part Number	Price	Enclosure Size HxWxD	No. of Clamps	Painted Steel Subpanel	Stainless Steel Subpanel	Galvanized Steel Subpanel	Perforated Subpanel
N12202010	\$319.00	20x20x10 [508x508x254]	2	NP2020	NP2020SS	NP2020G	NP2020PP
N12202406	\$307.00	20x24x6 [508x610x152]	2	NP2420	NP2420SS	NP2420G	NP2420PP
N12202408	\$325.00	20x24x8 [508x610x203]	2	NP2420	NP2420SS	NP2420G	NP2420PP
N12241206	\$259.00	24x12x6 [610x305x152]	2	NP1224	–	NP1224G	–
N12241208	\$274.00	24x12x8 [610x305x203]	2	NP1224	–	NP1224G	–
N12241210	\$288.00	24x12x10 [610x305x254]	2	NP1224	–	NP1224G	–
N12241606	\$283.00	24x16x6 [610x406x152]	2	NP2416	NP2416SS	NP2416G	–
N12241608	\$299.00	24x16x8 [610x406x203]	2	NP2416	NP2416SS	NP2416G	–
N12242006	\$278.00	24x20x6 [610x508x152]	2	NP2420	NP2420SS	NP2420G	NP2420PP
N12242008	\$294.00	24x20x8 [610x508x203]	2	NP2420	NP2420SS	NP2420G	NP2420PP
N12242010	\$343.00	24x20x10 [610x508x254]	2	NP2420	NP2420SS	NP2420G	NP2420PP
N12242012	\$361.00	24x20x12 [610x508x305]	2	NP2420	NP2420SS	NP2420G	NP2420PP
N12242016	\$396.00	24x20x16 [610x508x406]	2	NP2420	NP2420SS	NP2420G	NP2420PP
N12242406	\$332.00	24x24x6 [610x610x152]	2	NP2424	NP2424SS	NP2424G	NP2424PP
N12242408	\$291.00	24x24x8 [610x610x203]	2	NP2424	NP2424SS	NP2424G	NP2424PP
N12242410	\$370.00	24x24x10 [610x610x254]	2	NP2424	NP2424SS	NP2424G	NP2424PP
N12242412	\$390.00	24x24x12 [610x610x305]	2	NP2424	NP2424SS	NP2424G	NP2424PP
N12242416	\$429.00	24x24x16 [610x610x406]	2	NP2424	NP2424SS	NP2424G	NP2424PP
N12243008	\$390.00	24x30x8 [610x762x203]	2	NP3024	NP3024SS	NP3024G	NP3024PP
N12301606	\$310.00	30x16x6 [762x406x152]	2	NP3016	–	NP3016G	–
N12302006	\$339.00	30x20x6 [762x508x152]	2	NP3020	NP3020SS	NP3020G	–
N12302008	\$359.00	30x20x8 [762x508x203]	2	NP3020	NP3020SS	NP3020G	–
N12302010	\$379.00	30x20x10 [762x508x254]	2	NP3020	NP3020SS	NP3020G	–
N12302406	\$368.00	30x24x6 [762x610x152]	2	NP3024	NP3024SS	NP3024G	NP3024PP
N12302408	\$352.00	30x24x8 [762x610x203]	2	NP3024	NP3024SS	NP3024G	NP3024PP
N12302410	\$341.00	30x24x10 [762x610x254]	2	NP3024	NP3024SS	NP3024G	NP3024PP
N12302412	\$434.00	30x24x12 [762x610x305]	2	NP3024	NP3024SS	NP3024G	NP3024PP
N12302416	\$477.00	30x24x16 [762x610x406]	2	NP3024	NP3024SS	NP3024G	NP3024PP
N12302420	\$521.00	30x24x20 [762x610x508]	2	NP3024	NP3024SS	NP3024G	NP3024PP
N12302424	\$565.00	30x24x24 [762x610x610]	2	NP3024	NP3024SS	NP3024G	NP3024PP

Note: Subpanels must be ordered separately. Dimensions in inches [millimeters]; letters in table correspond to letters on dimensional drawings.

NEMA 12 and 13 Single-Door Wall Mount

NEMA 12 and 13 Single-Door Wall Mount [cont.]							
Part Number	Price	Enclosure Size HxWxD	No. of Clamps	Painted Steel Subpanel	Stainless Steel Subpanel	Galvanized Steel Subpanel	Perforated Subpanel
N12303008	\$436.00	30x30x8 [762x762x203]	2	NP3030	NP3030SS	NP3030G	NP3030PP
N12303012	\$484.00	30x30x12 [762x762x305]	2	NP3030	NP3030SS	NP3030G	NP3030PP
N12303608	\$482.00	30x36x8 [762x914x203]	2	NP3630	NP3630SS	NP3630G	NP3630PP
N12362406	\$404.00	36x24x6 [914x610x152]	2	NP3624	NP3624SS	NP3624G	NP3624PP
N12362408	\$387.00	36x24x8 [914x610x203]	2	NP3624	NP3624SS	NP3624G	NP3624PP
N12362410	\$453.00	36x24x10 [914x610x254]	2	NP3624	NP3624SS	NP3624G	NP3624PP
N12362412	\$477.00	36x24x12 [914x610x305]	2	NP3624	NP3624SS	NP3624G	NP3624PP
N12363006	\$411.00	36x30x6 [914x762x152]	2	NP3630	NP3630SS	NP3630G	NP3630PP
N12363008	\$482.00	36x30x8 [914x762x203]	2	NP3630	NP3630SS	NP3630G	NP3630PP
N12363010	\$459.00	36x30x10 [914x762x254]	2	NP3630	NP3630SS	NP3630G	NP3630PP
N12363012	\$535.00	36x30x12 [914x762x305]	2	NP3630	NP3630SS	NP3630G	NP3630PP
N12363016	\$589.00	36x30x16 [914x762x406]	2	NP3630	NP3630SS	NP3630G	NP3630PP
N12363020	\$642.00	36x30x20 [914x762x508]	2	NP3630	NP3630SS	NP3630G	NP3630PP
N12363608	\$535.00	36x36x8 [914x914x203]	2	NP3636	NP3636SS	NP3636G	NP3636PP
N12363612	\$535.00	36x36x12 [914x914x305]	2	NP3636	NP3636SS	NP3636G	NP3636PP
N12422408	\$467.00	42x24x8 [1067x610x203]	3	NP4224	-	NP4224G	-
N12423008	\$528.00	42x30x8 [1067x762x203]	3	NP4230	NP4230SS	NP4230G	NP4230PP
N12423010	\$557.00	42x30x10 [1067x762x254]	3	NP4230	NP4230SS	NP4230G	NP4230PP
N12423012	\$586.00	42x30x12 [1067x762x305]	3	NP4230	NP4230SS	NP4230G	NP4230PP
N12423608	\$588.00	42x36x8 [1067x914x203]	3	NP4236	NP4236SS	NP4236G	NP4236PP
N12423610	\$619.00	42x36x10 [1067x914x254]	3	NP4236	NP4236SS	NP4236G	NP4236PP
N12423612	\$651.00	42x36x12 [1067x914x305]	3	NP4236	NP4236SS	NP4236G	NP4236PP
N12423616	\$676.00	42x36x16 [1067x914x406]	3	NP4236	NP4236SS	NP4236G	NP4236PP
N12482408	\$502.00	48x24x8 [1219x610x203]	3	NP4824	-	NP4824G	-
N12483008	\$570.00	48x30x8 [1219x762x203]	3	NP4830	-	NP4830G	-
N12483010	\$601.00	48x30x10 [1219x762x254]	3	NP4830	-	NP4830G	-
N12483608	\$637.00	48x36x8 [1219x914x203]	3	NP4836	NP4836SS	NP4836G	NP4836PP
N12483610	\$670.00	48x36x10 [1219x914x254]	3	NP4836	NP4836SS	NP4836G	NP4836PP
N12483612	\$704.00	48x36x12 [1219x914x305]	3	NP4836	NP4836SS	NP4836G	NP4836PP
N12483616	\$771.00	48x36x16 [1219x914x406]	3	NP4836	NP4836SS	NP4836G	NP4836PP

Note: Subpanels must be ordered separately. Dimensions in inches [millimeters]; letters in table correspond to letters on dimensional drawings.

NEMA 12 and 13 Single-Door Wall Mount

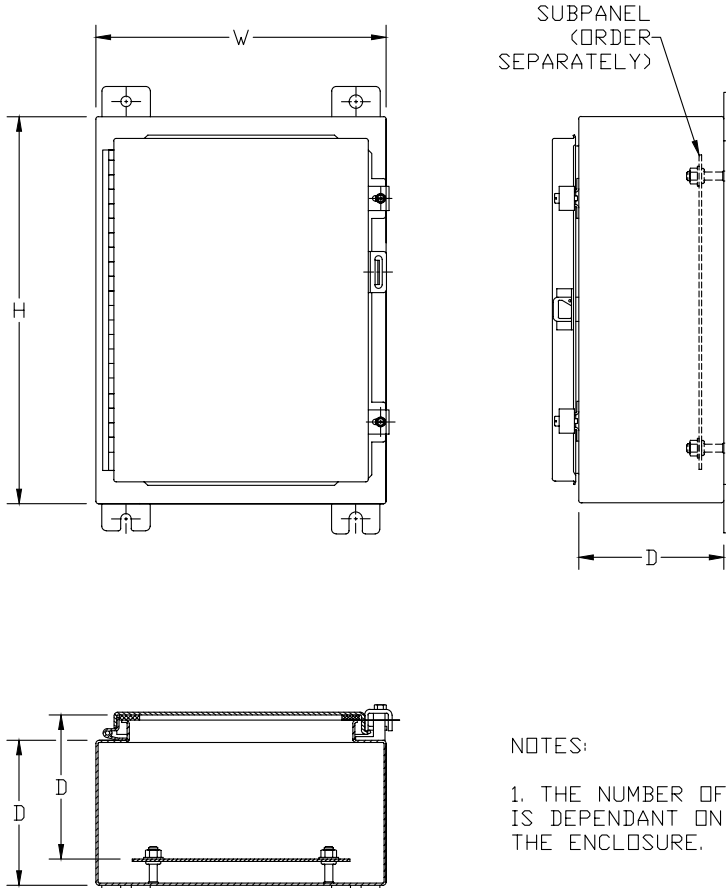
NEMA 12 and 13 Single-Door Wall Mount [cont.]							
Part Number	Price	Enclosure Size HxWxD	No. of Clamps	Painted Steel Subpanel	Stainless Steel Subpanel	Galvanized Steel Subpanel	Perforated Subpanel
N12483620	\$839.00	48x36x20 [1219x914x508]	3	NP4836	NP4836SS	NP4836G	NP4836PP
N12603608	\$743.00	60x36x8 [1524x914x203]	3	NP6036	NP6036SS	NP6036G	NP6036PP
N12603610	\$781.00	60x36x10 [1524x914x254]	3	NP6036	NP6036SS	NP6036G	NP6036PP
N12603612	\$819.00	60x36x12 [1524x914x305]	3	NP6036	NP6036SS	NP6036G	NP6036PP
N12603616	\$896.00	60x36x16 [1524x914x406]	3	NP6036	NP6036SS	NP6036G	NP6036PP
N12603620	\$974.00	60x36x20 [1524x914x508]	3	NP6036	NP6036SS	NP6036G	NP6036PP
N12723012	\$861.00	72x30x12 [1829x762x305]	4	NP7230	-	NP7230G	-
N12723016	\$897.00	72x30x16 [1829x762x406]	4	NP7230	-	NP7230G	-
N12723612	\$936.00	72x36x12 [1829x914x305]	4	NP7236	-	NP7236G	-

Note: Subpanels must be ordered separately. Dimensions in inches [millimeters]; letters in table correspond to letters on dimensional drawings.

Enclosure Shipping Schedule		
Same day	1 - 7 days	1 -10 days
Color indicates shipping lead time in business days.		

Dimensions

in [mm]



NOTES:
 1. THE NUMBER OF DOOR CLAMPS IS DEPENDANT ON THE SIZE OF THE ENCLOSURE.

See our website: www.AutomationDirect.com for complete engineering drawings.

Enclosure Subpanels



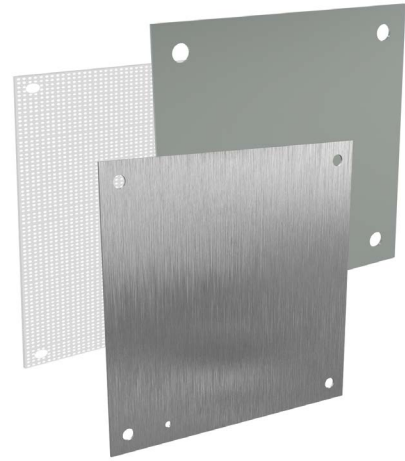
Subpanels for NEMA 1, 12, 4 and 4X Wall Mount Enclosures and WC9 NEMA 12 Operator Consoles

- 12 gauge steel (perforated subpanels are 14 gauge)
- Subpanels with any side over 17" have 3/4" flange on all sides
- Painted steel and perforated subpanels are white polyester powder over phosphatized surfaces
- Galvanized subpanels have a conductive finish (no paint)

Panels listed fit the following enclosures:

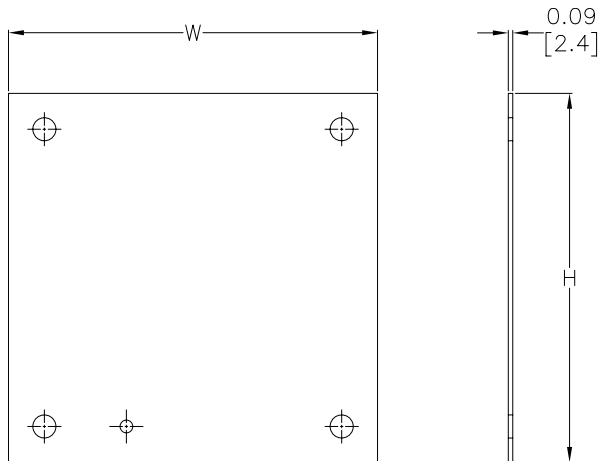
- NEMA 1 large (N1C, 42in width and wider)
- NEMA 12 single door wall mount (N12)
- NEMA 12 two door wall mount (WA_WF)
- NEMA 12 single door flush wall mount (WA_FM)
- NEMA 4 (N4) and 4X (SSN) single door wall mount
- NEMA 12 operator consoles (WC9)
- NEMA 12 Wall Disconnect (SDN12_PL & ABN12)
- NEMA 4 & 4X Wall Mount Disconnect (SSN4 & SSN4X)

NOTE: Use NPxxxx subpanels in NEMA 1, NEMA 4 and 4X, and NEMA 12 enclosures only. Do NOT use NPxxxx subpanels in N412 Ultimate Series enclosures with a C in the suffix.



Dimensions

in [mm]



Perforated panels have 0.13" diameter holes at 0.25" spacing.

NOTE:
SUBPANELS LARGER THAN
20 X 20 HAVE (2) 0.31"
GROUND HOLES.

See our website: www.AutomationDirect.com for complete engineering drawings.

Enclosures Subpanels



Enclosure Shipping Schedule	
Same day	1 - 7 days
Color indicates shipping lead time in business days.	

Subpanels for NEMA 1, 12, 4 and 4X Wall Mount Enclosures and WC9 NEMA 12 Operator Consoles									
Painted Steel	Price	Galvanized	Price	Perforated	Price	304 Stainless Steel	Price	Nominal Enclosure Size HxW	Subpanel Size AxB
NP1212	\$16.00	NP1212G	\$16.00	-		-		12 x 12	9.00 x 9.00 [229 x 229]
NP1224	\$30.50	NP1224G	\$30.50	-		-		24 x 12	9.00 x 21.00 [229 x 533]
NP1612	\$19.50	NP1612G	\$19.50	NP1612PP	<>	NP1612SS	\$52.00	12 x 16 16 x 12	13.00 x 9.00 [330 x 229]
NP1616	\$26.50	NP1616G	\$26.50	NP1616PP	<>	NP1616SS	\$70.00	16 x 16	13.00 x 13.00 [330 x 330]
NP2012	\$28.50	NP2012G	\$28.50	-		-		12 x 20 20 x 12	17.00 x 9.00 [432 x 229]
NP2016	\$26.50	NP2016G	\$26.50	NP2016PP	<>	NP2016SS	\$70.00	20 x 16 16 x 20	17.00 x 13.00 [432 x 330]
NP2020	\$33.00	NP2020G	\$33.00	NP2020PP	<>	NP2020SS	\$93.00	20 x 20	17.00 x 17.00 [432 x 432]
NP2416	\$37.00	NP2416G	\$37.00	-		-		24 x 16	21.00 x 13.00 [533 x 330]
NP2420	\$45.00	NP2420G	\$45.00	NP2420PP	<>	NP2420SS	\$119.00	20 x 24 24 x 20	21.00 x 17.00 [533 x 432]
NP2424	\$47.50	NP2424G	\$47.50	NP2424PP	<>	NP2424SS	\$128.00	24 x 24	21.00 x 21.00 [533 x 533]
NP3016	\$49.00	NP3016G	\$49.00	-		-		30 x 16	27.00 x 13.00 [686 x 330]
NP3020	\$60.00	NP3020G	\$60.00	-		NP3020SS	\$164.00	30 x 20	27.00 x 17.00 [686 x 432]
NP3024	\$57.00	NP3024G	\$57.00	NP3024PP	<>	NP3024SS	\$155.00	24 x 30 30 x 24	27.00 x 21.00 [686 x 533]
NP3030	\$97.00	NP3030G	\$97.00	NP3030PP	<>	NP3030SS	\$276.00	30 x 30	27.00 x 27.00 [686 x 686]
NP3624	\$75.00	NP3624G	\$75.00	NP3624PP	<>	NP3624SS	\$213.00	36 x 24	33.00 x 21.00 [838 x 533]
NP3630	\$99.00	NP3630G	\$99.00	NP3630PP	<>	NP3630SS	\$263.00	30 x 36 36 x 30	33.00 x 27.00 [838 x 686]
NP3636	\$117.00	NP3636G	\$117.00	NP3636PP	<>	NP3636SS	\$318.00	36 x 36	33.00 x 33.00 [838 x 838]
NP4024	\$99.00	NP4024G	\$99.00	-		-		40 x 24	37.00 x 21.00 [940 x 533]
NP4224	\$95.00	NP4224G	\$95.00	-		-		42 x 24	39.00 x 21.00 [991 x 533]
NP4230	\$126.00	NP4230G	\$126.00	NP4230PP	<>	NP4230SS	\$343.00	42 x 30	39.00 x 27.00 [991 x 686]
NP4236	\$148.00	NP4236G	\$148.00	NP4236PP	<>	NP4236SS	\$411.00	42 x 36	39.00 x 33.00 [991 x 838]
NP4824	\$107.00	NP4824G	\$107.00	-		-		48 x 24	45.00 x 21.00 [1143 x 533]
NP4830	\$141.00	NP4830G	\$141.00	-		-		48 x 30	45.00 x 27.00 [1143 x 686]
NP4836	\$168.00	NP4836G	\$168.00	NP4836PP	<>	NP4836SS	\$446.00	48 x 36	45.00 x 33.00 [1143 x 838]
NP6030	\$174.00	NP6030G	\$174.00	-		-		60 x 30	57.00 x 27.00 [1448 x 686]
NP6036	\$206.00	NP6036G	\$206.00	NP6036PP	<>	NP6036SS	\$588.00	60 x 36	57.00 x 33.00 [1448 x 838]
NP7230	\$200.00	NP7230G	\$200.00	-		-		72 x 30	69.00 x 27.00 [1753 x 686]
NP7236	\$245.00	NP7236G	\$245.00	-		-		72 x 36	69.00 x 33.00 [1753 x 838]

Notes: Dimensions in inches [millimeters].
 Letters in table correspond to letters on dimensional drawing.
 Disconnect enclosures will be up to 2 inches [51mm] wider than width dimensions in this table.

See our website: www.AutomationDirect.com for complete engineering drawings.