

NEMA 12 and 13 Single-Door Flush Wall-Mount



Applications

Designed to house electrical controls, terminals and instruments. Provide protection from dirt, dust, oil and water. External frame allows enclosure to be recessed in wall. Enclosure is used in applications where external space is limited or in high traffic areas.

Construction

- Bodies and doors fabricated from 14 gauge steel.
- 10 gauge steel mounting frame extends completely around enclosure
- Continuously plasma welded seams
- Grounding provisions provided
- Collar studs are provided for mounting optional subpanel
- Rolled lip around all sides of enclosure opening is provided to exclude liquids and contaminants
- Doors are sealed with a pour-in-place polyurethane gasket
- Door is held closed with captivated screws threaded into sealed wells
- Door is removable by pulling heavy gauge continuous hinge pin

Finish

- ANSI-61 gray polyester powder light texture inside and out over phosphatized surfaces

Listings

- UL 50 Type 12 &13 [UL File E6924]
- NEMA/EEMAC Type 12 & 13
- JIC EL - 1 - 71



NOTE: Do NOT use NPxxxxC subpanels in NEMA 1, NEMA 4 and 4X, and NEMA 12 enclosures. For example: Subpanel NP1612C will not fit enclosure WA161206FM [NP1612 is the correct subpanel]. Only use NPxxxx subpanels in NEMA 1, NEMA 4 and 4X, and NEMA 12 enclosures.

Shipping Schedule

Same day 1 - 5 days 1 - 7 days 1 - 15 days 1 - 20 days
Color indicates shipping lead time in business days.

NEMA 12 and 13 Single-Door Flush Wall-Mount

Part Number	Price	Enclosure SizeHxWxD	Painted Steel Subpanel	Stainless Steel Subpanel	Galvanized Steel Subpanel	Perforated Subpanel
WA161206FM	\$475.00	16.00 x 12.00 x 7.13 [406 x 305 x 181]	NP1612	NP1612SS	NP1612G	NP1612PP
WA202006FM	\$592.00	20.00 x 20.00 x 7.13 [508 x 508 x 181]	NP2020	NP2020SS	NP2020G	NP2020PP
WA242408FM	\$725.00	24.00 x 24.00 x 9.13 [610 x 610 x 232]	NP2424	NP2424SS	NP2424G	NP2424PP
WA302408FM	\$844.00	30.00 x 24.00 x 9.13 [762 x 610 x 232]	NP3024	NP3024SS	NP3024G	NP3024PP
WA363008FM	\$1,136.00	36.00 x 30.00 x 9.13 [914 x 762 x 232]	NP3630	NP3630SS	NP3630G	NP3630PP

Notes: Subpanels must be ordered separately.

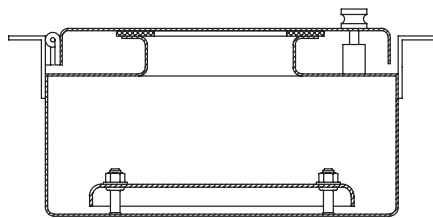
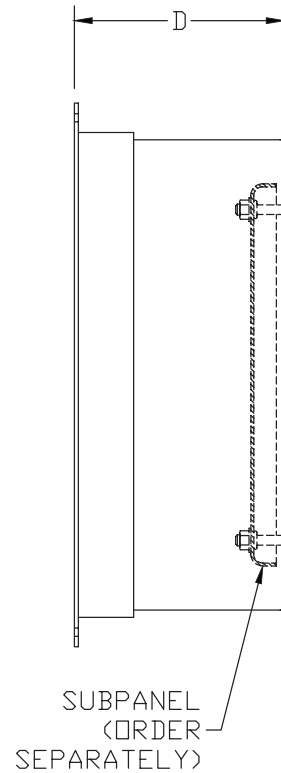
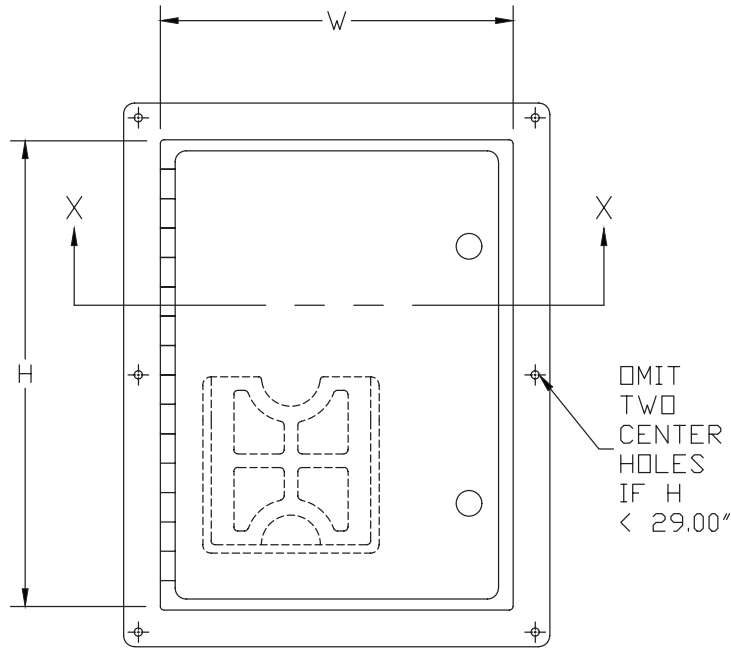
Dimensions in inches [millimeters].

Letters in table correspond to letters on dimensional drawings.

NEMA 12 and 13 Single-Door Flush Wall-Mount



Dimensions



SECTION X-X

NOTES:

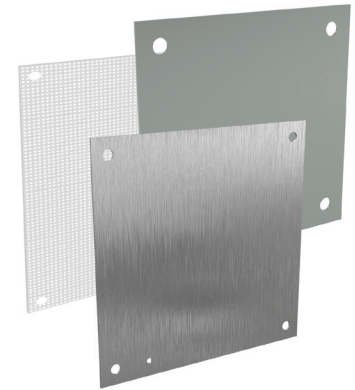
1. PANELS MADE FROM 12 GA. STEEL
2. IF $H = < 20"$, PRINT POCKET IS 6" X 6". IF $H = 20"$ OR MORE, PRINT POCKET IS 8" X 10".

Enclosure Subpanels



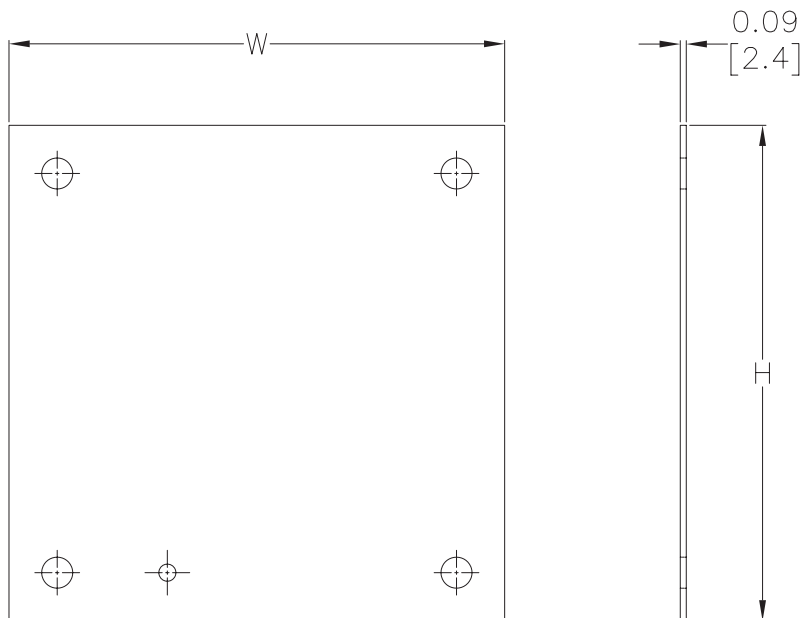
Subpanels for NEMA 1, 12, 4 and 4X Wall-Mount Enclosures and WC9 NEMA 12 Operator Consoles

- 12 gauge steel (perforated subpanels are 14 gauge)
- Subpanels with any side over 17.0 in [432 mm] have 0.25 in [19 mm] flange on all sides
- Painted steel and perforated subpanels are white polyester powder over phosphatized surfaces
- Galvanized subpanels have a conductive finish (no paint) Panels listed fit the following enclosures:
- NEMA 1 large (N1C, 42in width and wider)
- NEMA 12 single door wall-mount (N12)
- NEMA 12 two door wall-mount (WA_WF)
- NEMA 12 single door flush wall-mount (WA_FM)
- NEMA 4 (N4) and 4X (SSN) single door wall-mount
- NEMA 12 operator consoles (WC9)
- NEMA 12 Wall Disconnect (SDN12_PL & ABN12)
- NEMA 4 & 4X Wall-Mount Disconnect (SSN4 & SSN4X)



Note: Use NPxxxx subpanels in NEMA 1, NEMA 4 and 4X, and NEMA 12 enclosures only. Do NOT use NPxxxx subpanels in N412 Ultimate Series enclosures with a C in the suffix.

Dimensions



NOTE:
SUBPANELS LARGER THAN
20 X 20 HAVE (2) 0.31"
GROUND HOLES.

Note: Perforated panels have 0.13 in [3 mm] diameter holes at 0.25 in [6 mm] spacing.

Enclosure Subpanels



Shipping Schedule

Same day 1 - 5 days 1 - 7 days 1 - 15 days 1 - 20 days

Color indicates shipping lead time in business days.

Subpanels for NEMA 1, 12, 4 and 4X Wall-Mount Enclosures and WC9 NEMA 12 Operator Consoles

Painted Steel	Price	Galvanized	Price	Perforated	Price	304 Stainless Steel	Price	Nominal Enclosure Size HxW	Subpanel Size AxB
NP1212	\$16.25	NP1212G	\$23.00	—	—	—	—	12 x 12	9.00 x 9.00 [229 x 229]
NP1224	\$40.00	NP1224G	\$40.00	—	—	—	—	24 x 12	9.00 x 21.00 [229 x 533]
NP1612	\$29.00	NP1612G	\$29.00	NP1612PP	\$29.00	NP1612SS	\$76.00	12 x 16 16 x 12	13.00 x 9.00 [330 x 229]
NP1616	\$35.50	NP1616G	\$35.50	NP1616PP	\$35.50	NP1616SS	\$93.00	16 x 16	13.00 x 13.00 [330 x 330]
NP2012	\$33.50	NP2012G	\$33.50	—	—	—	—	12 x 20 20 x 12	17.00 x 9.00 [432 x 229]
NP2016	\$42.50	NP2016G	\$42.50	NP2016PP	\$42.50	NP2016SS	\$112.00	20 x 16 16 x 20	17.00 x 13.00 [432 x 330]
NP2020	\$51.00	NP2020G	\$51.00	NP2020PP	\$51.00	NP2020SS	\$145.00	20 x 20	17.00 x 17.00 [432 x 432]
NP2416	\$49.00	NP2416G	\$53.00	—	—	NP2416SS	\$139.00	24 x 16	21.00 x 13.00 [533 x 330]
NP2420	\$66.00	NP2420G	\$66.00	NP2420PP	\$66.00	NP2420SS	\$176.00	20 x 24 24 x 20	21.00 x 17.00 [533 x 432]
NP2424	\$76.00	NP2424G	\$76.00	NP2424PP	\$76.00	NP2424SS	\$205.00	24 x 24	21.00 x 21.00 [533 x 533]
NP3016	\$66.00	NP3016G	\$66.00	—	—	—	—	30 x 16	27.00 x 13.00 [686 x 330]
NP3020	\$79.00	NP3020G	\$79.00	—	—	NP3020SS	\$236.00	30 x 20	27.00 x 17.00 [686 x 432]
NP3024	\$92.00	NP3024G	\$92.00	NP3024PP	\$92.00	NP3024SS	\$248.00	24 x 30 30 x 24	27.00 x 21.00 [686 x 533]
NP3030	\$129.00	NP3030G	\$129.00	NP3030PP	\$129.00	NP3030SS	\$397.00	30 x 30	27.00 x 27.00 [686 x 686]
NP3624	\$110.00	NP3624G	\$110.00	NP3624PP	\$110.00	NP3624SS	\$339.00	36 x 24	33.00 x 21.00 [838 x 533]
NP3630	\$147.00	NP3630G	\$147.00	NP3630PP	\$147.00	NP3630SS	\$389.00	30 x 36 36 x 30	33.00 x 27.00 [838 x 686]
NP3636	\$172.00	NP3636G	\$172.00	NP3636PP	\$172.00	NP3636SS	\$470.00	36 x 36	33.00 x 33.00 [838 x 838]
NP4024	\$132.00	—	—	—	—	—	—	40 x 24	37.00 x 21.00 [940 x 533]
NP4224	\$126.00	NP4224G	\$126.00	—	—	—	—	42 x 24	39.00 x 21.00 [991 x 533]
NP4230	\$168.00	NP4230G	\$168.00	NP4230PP	\$168.00	NP4230SS	\$495.00	42 x 30	39.00 x 27.00 [991 x 686]
NP4236	\$198.00	NP4236G	\$198.00	NP4236PP	\$198.00	NP4236SS	\$593.00	42 x 36	39.00 x 33.00 [991 x 838]
NP4824	\$143.00	NP4824G	\$143.00	—	—	—	—	48 x 24	45.00 x 21.00 [1143 x 533]
NP4830	\$188.00	NP4830G	\$188.00	—	—	—	—	48 x 30	45.00 x 27.00 [1143 x 686]
NP4836	\$223.00	NP4836G	\$223.00	NP4836PP	\$223.00	NP4836SS	\$643.00	48 x 36	45.00 x 33.00 [1143 x 838]
NP6030	\$231.00	NP6030G	\$250.00	—	—	—	\$189.00	60 x 30	57.00 x 27.00 [1448 x 686]
NP6036	\$275.00	NP6036G	\$275.00	NP6036PP	\$275.00	NP6036SS	\$848.00	60 x 36	57.00 x 33.00 [1448 x 838]
NP7230	\$266.00	NP7230G	\$288.00	—	—	—	—	72 x 30	69.00 x 27.00 [1753 x 686]
NP7236	\$326.00	NP7236G	\$353.00	—	—	—	—	72 x 36	69.00 x 33.00 [1753 x 838]

Notes: Dimensions in inches [millimeters].

Letters in table correspond to letters on dimensional drawing.

Disconnect enclosures will be up to 2 inches [51mm] wider than width dimensions in this table.