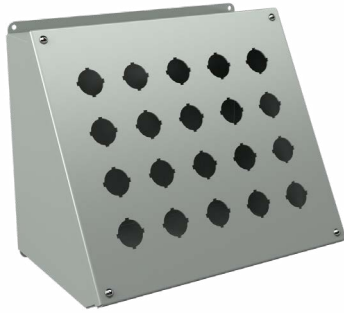


30mm Pushbutton NEMA 12 and 13 Operator Consolet



Applications

Designed for use where slanted control surfaces are wanted. Enclosures may be mounted in a variety of ways to meet specific requirements. Receives standard 30mm oil-tight pushbuttons, switches and pilot lights. Provides protection from dirt, dust, oil and water.

Construction

- Fabricated from 14 gauge steel
- Closed cell oil- resistant neoprene gasket
- Continuously welded seams ground smooth
- External mounting feet, top and bottom of enclosure
- Captivated cover screws thread into sealed wells
- Standard "4-way" pushbutton holes accept all brands of oil-tight pushbuttons, switches and pilot lights
- Enclosures with 2 or more rows of holes have internal detachable hinges to hold cover open during wiring, yet permit quick removal
- Grounding provisions provided

Finish

- ANSI 61 gray polyester powder inside and out over phosphatized surfaces

Listings

- UL 508, Types 12 & 13 [UL File E64791]
- CSA Certified, Types 12 & 13 [CSA File LL66078]
- NEMA/EEMAC Types 12 & 13



30mm Pushbutton NEMA 12 and 13 Operator Consolet			
Part Number	Price	# Holes	Enclosure Size HxWxD
WPBA1	\$66.00	1	3.77 x 3.59 x 4.88 [96 x 91 x 124]
WPBA2	\$80.00	2	3.77 x 5.84 x 4.88 [96 x 148 x 124]
WPBA3	\$91.00	3	3.77 x 8.09 x 4.88 [96 x 205 x 124]
WPBA4	\$102.00	4	3.77 x 10.34 x 4.88 [96 x 263 x 124]
WPBA4S	\$115.00	4	7.52 x 6.59 x 6.76 [191 x 167 x 172]
WPBA6	\$133.00	6	7.52 x 8.84 x 6.76 [191 x 225 x 172]
WPBA8	\$151.00	8	7.52 x 11.09 x 6.76 [191 x 282 x 172]
WPBA9	\$158.00	9	9.77 x 8.84 x 7.88 [248 x 225 x 200]
WPBA10	\$161.00	10	7.52 x 13.34 x 6.76 [191 x 339 x 172]
WPBA12	\$176.00	12	7.52 x 15.59 x 6.76 [191 x 396 x 172]
WPBA12S	\$169.00	12	12.02 x 8.84 x 9.01 [305 x 225 x 229]
WPBA16	\$206.00	16	7.52 x 20.09 x 6.76 [191 x 510 x 172]
WPBA16S	\$218.00	16	12.02 x 11.09 x 9.01 [305 x 282 x 229]
WPBA20	\$226.00	20	12.02 x 13.34 x 9.01 [305 x 339 x 229]
WPBA25	\$257.00	25	14.27 x 13.34 x 10.13 [362 x 339 x 257]
WPBA30	\$281.00	30	14.27 x 15.59 x 10.13 [362 x 396 x 257]

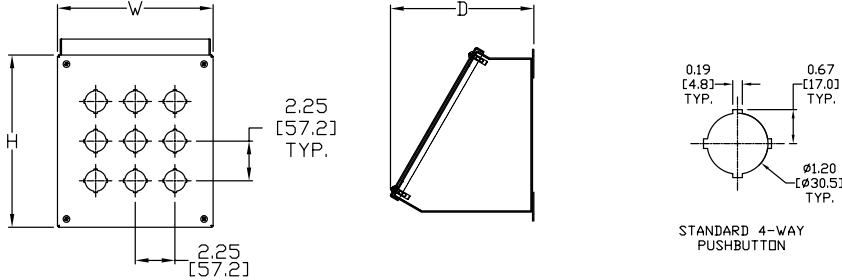
Notes: Dimensions in inches (millimeters).
Letters in table correspond to letters on dimensional drawings.

Enclosure Shipping Schedule
1 - 7 days
Color indicates shipping lead time in business

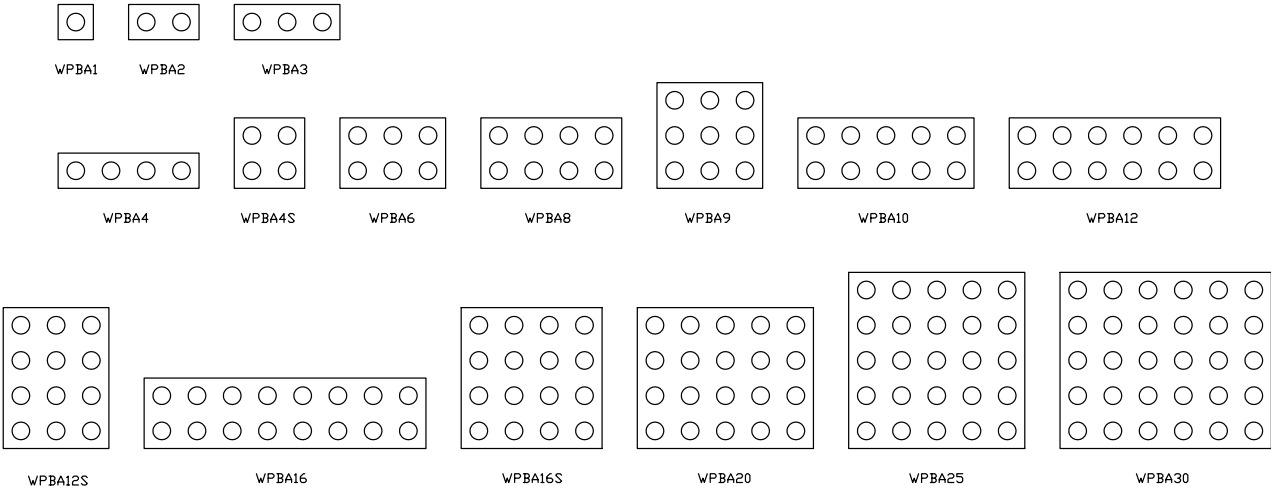
30mm Pushbutton NEMA 12 and 13 Operator Consolet



Dimensions



WPBA HOLE ARRANGEMENTS



See our website: www.AutomationDirect.com for complete engineering drawings.