

# 30mm Pushbutton NEMA 4, 12 and 13 Wall Mount



## Applications

Designed to hold all standard 30mm brands of pushbuttons, switches and pilot lights. Provides protection from dirt, dust, oil and water.

- Enclosures 9.50" x 6.25" x 3.09" and larger have internal detachable hinges to hold cover open during wiring, yet permit quick removal
- Grounding provisions provided



## Construction

- Bodies and doors fabricated from 14 gauge steel
- Closed cell oil resistant neoprene gasket
- Continuously welded seams ground smooth
- External mounting feet, top and bottom of enclosure
- Captivated cover screws thread into sealed wells
- Standard "4-way" pushbutton holes accept all brands of oil-tight pushbuttons, switches and pilot lights

## Finish

- ANSI 61 gray polyester powder inside and out over phosphatized surfaces

## Listings

- UL 508, Types 4, 12 & 13 [UL File E64791]
- CSA Certified Types 12 & 13 [CSA File LL66078]
- NEMA/EEMAC Types 4, 12 & 13
- PB16(BC) & PB25(BC) meet NEMA 12 only



Enclosure Shipping Schedule		
Same day	1 - 7 days	1 -10 days
Color indicates shipping lead time in business days.		

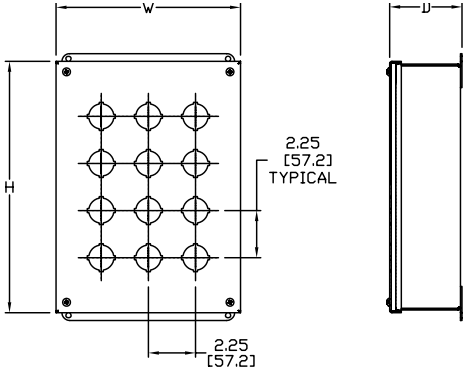
30mm Pushbutton NEMA 4, 12 and 13 Wall Mount					
Pushbutton Enclosure	Price	With Blank Cover	Price	# Holes	Enclosure Size HxWxD
<b>PB1</b>	\$43.50	<b>PB1BC</b>	\$47.00	1	3.76 x 3.56 x 3.14 [96 x 90 x 80]
<b>PB2</b>	\$50.00	<b>PB2BC</b>	\$55.00	2	6.01 x 3.56 x 3.10 [153 x 90 x 79]
<b>PB3</b>	\$56.00	<b>PB3BC</b>	\$62.00	3	8.26 x 3.56 x 3.10 [210 x 90 x 79]
<b>PB4</b>	\$68.00	<b>PB4BC</b>	\$68.00	4	10.51 x 3.56 x 3.10 [267 x 90 x 79]
<b>PB4S</b>	\$66.00	<b>PB4SBC</b>	\$66.00	4	7.51 x 6.56 x 3.38 [191 x 167 x 86]
<b>PB5</b>	\$74.00	<b>PB5BC</b>	\$74.00	5	12.76 x 3.56 x 3.10 [324 x 90 x 79]
<b>PB6</b>	\$87.00	<b>PB6BC</b>	\$87.00	6	9.76 x 6.56 x 3.38 [248 x 167 x 86]
<b>PB6VL</b>	\$83.00	<b>PB6VLBC</b>	\$83.00	6	15.01 x 3.56 x 3.10 [381 x 90 x 79]
<b>PB8</b>	\$97.00	<b>PB8BC</b>	\$97.00	8	20.51 x 3.56 x 3.10 [521 x 90 x 79]
<b>PB9</b>	\$90.00	<b>PB9BC</b>	\$90.00	9	9.76 x 8.81 x 3.38 [248 x 224 x 86]
<b>PB10</b>	\$105.00	<b>PB10BC</b>	\$105.00	10	25.01 x 3.56 x 3.14 [635 x 90 x 80]
<b>PB12</b>	\$115.00	<b>PB12BC</b>	\$115.00	12	12.01 x 8.81 x 3.38 [305 x 224 x 86]
<b>PB16*</b>	\$132.00	<b>PB16BC</b>	\$129.00	16	12.01 x 11.06 x 3.38 [305 x 281 x 86]
<b>PB25*</b>	\$163.00	<b>PB25BC</b>	\$163.00	25	14.26 x 13.31 x 3.38 [362 x 338 x 86]

*Notes: Dimensions in inches [millimeters]. Letters in table correspond to letters on dimensional drawings. Letters in table correspond to letters on dimensional drawings. \*Only meets N12.*

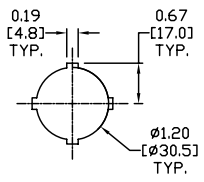
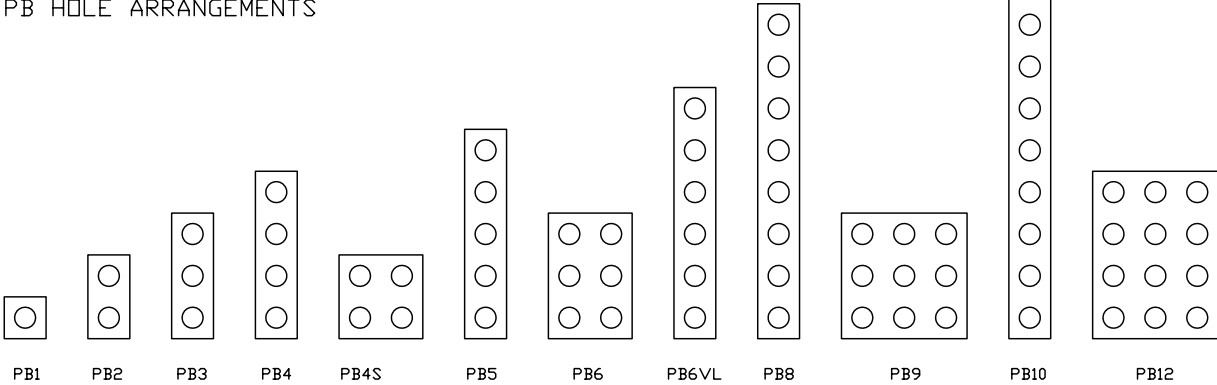
# 30mm Pushbutton NEMA 4, 12 and 13 Wall Mount



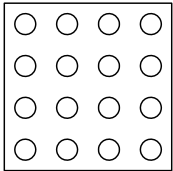
## Dimensions



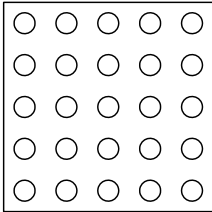
### PB HOLE ARRANGEMENTS



STANDARD 4-WAY PUSHBUTTON



PB16



PB25

See our website: [www.AutomationDirect.com](http://www.AutomationDirect.com) for complete engineering drawings.