

# NEMA 12 Multi-Door Freestanding



## Construction

- Bodies and doors fabricated from 10 gauge steel
- Continuously welded seams ground smooth, less holes or knockouts
- Heavy steel stiffeners are welded to enclosure backs, maintaining flatness and increasing rigidity
- Heavy duty removable lifting eyes are installed for easy handling
- Grounding provisions provided
- Provisions for fluorescent lighting are provided
- Heavy-gauge steel continuous hinges support each door
- 3-point latching mechanism with padlocking handles hold doors securely shut
- Doors are sealed with a closed cell neoprene gasket
- Removable 10-gauge subpanels and subpanel supports are furnished
- In two-door units the uniquely gasketed, overlapping doors eliminate the need for center posts
- [Uses WAL4 series handles and WAEMKA44 replacement key](#)

## Finish

- ANSI 61 gray polyester powder light texture inside and out over phosphatized surfaces

## Listings

- UL 508 Type 12 [UL File E64791]
- CSA Certified, Type 12



[CSA File LL66078]  
• NEMA/EEMAC Type 12

## Applications

Designed to protect electrical and electronic controls, components and instruments in typical industrial environments. Enclosure rating protects enclosed equipment from dust, dirt, oil and dripping water. These enclosures are used in machine tool applications for housing motor starters, drives, contactors, and PLCs, as well as a wide variety of other electrical and electronic equipment found in automotive, pulp and paper, wood products, textile and similar industries. Select from three, four and five-door options to best meet your application requirements.

### Enclosure Shipping Schedule

Same day	1 - 7 days	1 - 10 days	1 - 15 days	1 - 20 days
----------	------------	-------------	-------------	-------------

Color indicates shipping lead time in business days.

### NEMA 12 Multi-Door Freestanding

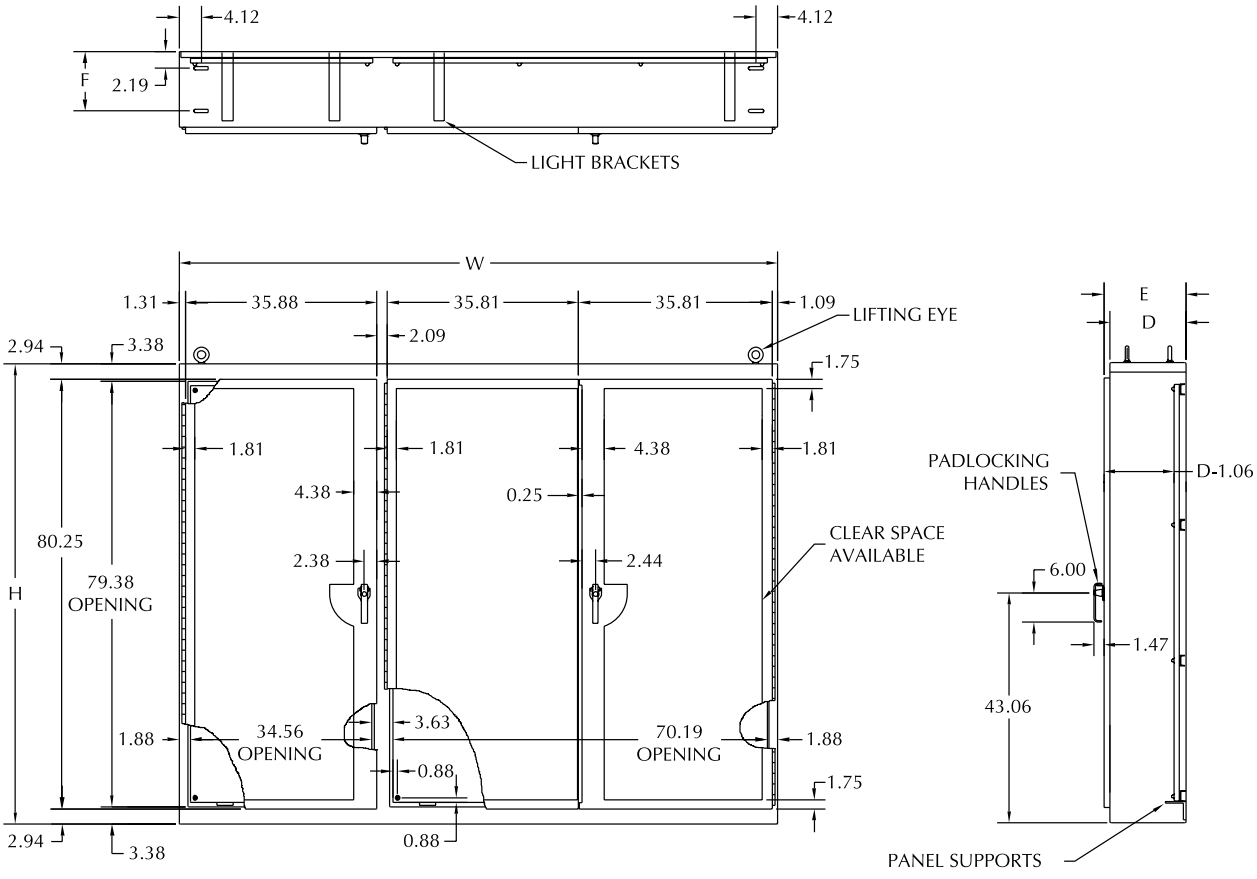
Part Number	Price	Enclosure Size HxWxD	Subpanel Sizes AxB	Number of Doors	E	F
<b>WA86M3E</b>	\$6,261.00	86.13 x 112.13 x 14.13 [2188 x 2848 x 359]	(1) 78 x 70 [1981 x 1778] and (1) 78 x 34 [1981 x 864]	3	15.38 [391]	11.94 [303]
<b>WA86M4E</b>	\$7,718.00	86.13 x 149.13 x 14.13 [2188 x 3788 x 359]	(2) 78 x 70 [1981 x 1778] and No Panel	4	15.38 [391]	11.94 [303]
<b>WA86M5E</b>	\$9,455.00	86.13 x 187.13 x 14.13 [2188 x 4753 x 359]	(2) 78 x 70 [1981 x 1778] and (1) 78 x 34 [1981 x 864]	5	15.38 [391]	11.94 [303]
<b>WA86M3E20</b>	\$6,426.00	86.13 x 112.13 x 20.13 [2188 x 2848 x 511]	(1) 78 x 70 [1981 x 1778] and (1) 78 x 34 [1981 x 864]	3	21.38 [543]	17.94 [456]
<b>WA86M4E20</b>	\$7,905.00	86.13 x 149.13 x 20.13 [2188 x 3788 x 511]	(2) 78 x 70 [1981 x 1778] and No Panel	4	21.38 [543]	17.94 [456]
<b>WA86M5E20</b>	\$9,712.00	86.13 x 187.13 x 20.13 [2188 x 4753 x 511]	(2) 78 x 70 [1981 x 1778] and (1) 78 x 34 [1981 x 864]	5	21.38 [543]	17.94 [456]

Notes: Subpanels are furnished with enclosures.  
Dimensions in inches [millimeters]  
Letters in table correspond to letters on dimensional drawings.

# NEMA 12 Multi-Door Freestanding

## Dimensions

in [mm]



See our website: [www.AutomationDirect.com](http://www.AutomationDirect.com) for complete engineering drawings.