

NEMA 12 and 13 Lift-Off Cover Wall Mount



Applications

The Hubbell/Wiegmann B Series JIC box is a standard of the automotive industry, but also has a wide number of uses in other industries. The box incorporates a chain-secured, lift-off cover and is designed to safeguard components against exposure to dust, dirt, oil and water.

Construction

- Bodies fabricated from 14 gauge steel; doors fabricated from 16 gauge steel
- Continuously welded seams ground smooth
- Lids are sealed with closed cell oil resistant neoprene gasket
- External mounting plates, top and bottom of enclosure
- Weldnuts provided for mounting optional subpanels securely on models 6"x4" and larger
- External screw clamps are quick and easy to operate
- Lift-off cover design. Chain holds cover to box when cover is removed
- Grounding provisions provided
- **Uses WAN12RA clamp**

Finish

- ANSI 61 gray polyester powder light texture inside and out over phosphatized surfaces

Listings

- UL 50, Types 12 and 13 [6x6x4 and above].
- UL 508, Types 12 and 13 [6x4x4 and smaller] [UL Files E23553, E64791]
- CSA Certified, Type 12 [CSA File LL66078]
- NEMA/EEMAC Types 12 and 13
- JIC EL-1-71



NEMA 12 and 13 Lift-Off Cover Wall Mount					
Part Number	Price	Enclosure Size HxWxD	Painted Steel Subpanel	Stainless Steel Subpanel	Galvanized Subpanel
B040403	\$36.00	4.31 x 4.31 x 3.21 [109 x 109 x 82]	—	—	—
B040404	\$38.00	4.31 x 4.31 x 4.21 [109 x 109 x 107]	—	—	—
B060403	\$41.50	6.31 x 4.31 x 3.21 [160 x 109 x 82]	P0604	P0604SS	P0604G
B060404	\$44.00	6.31 x 4.31 x 4.21 [160 x 109 x 107]	P0604	P0604SS	P0604G
B060604	\$48.50	6.31 x 6.31 x 4.21 [160 x 160 x 107]	P0606	P0606SS	P0606G
B080603	\$51.00	8.31 x 6.31 x 3.71 [211 x 160 x 94]	P0806	P0806SS	P0806G
B080606	\$57.00	8.31 x 6.31 x 6.21 [211 x 160 x 158]	P0806	P0806SS	P0806G
B080804	\$56.00	8.31 x 8.31 x 4.21 [211 x 211 x 107]	P0808	—	P0808G
B100804	\$64.00	10.31 x 8.31 x 4.21 [262 x 211 x 107]	P1008	P1008SS	P1008G
B100806	\$69.00	10.31 x 8.31 x 6.21 [262 x 211 x 158]	P1008	P1008SS	P1008G
B121005	\$82.00	12.31 x 10.31 x 5.21 [313 x 262 x 132]	P1210	P1210SS	P1210G
B121206	\$93.00	12.31 x 12.31 x 6.21 [313 x 313 x 158]	P1212	P1212SS	P1212G
B141206	\$104.00	14.31 x 12.31 x 6.21 [363 x 313 x 158]	P1412	P1412SS	P1412G
B161406	\$122.00	16.31 x 14.31 x 6.21 [414 x 313 x 158]	P1614	P1614SS	P1614G

*Notes: Subpanels must be ordered separately.
Dimensions in inches [millimeters]
Letters in table correspond to letters on dimensional drawings.*

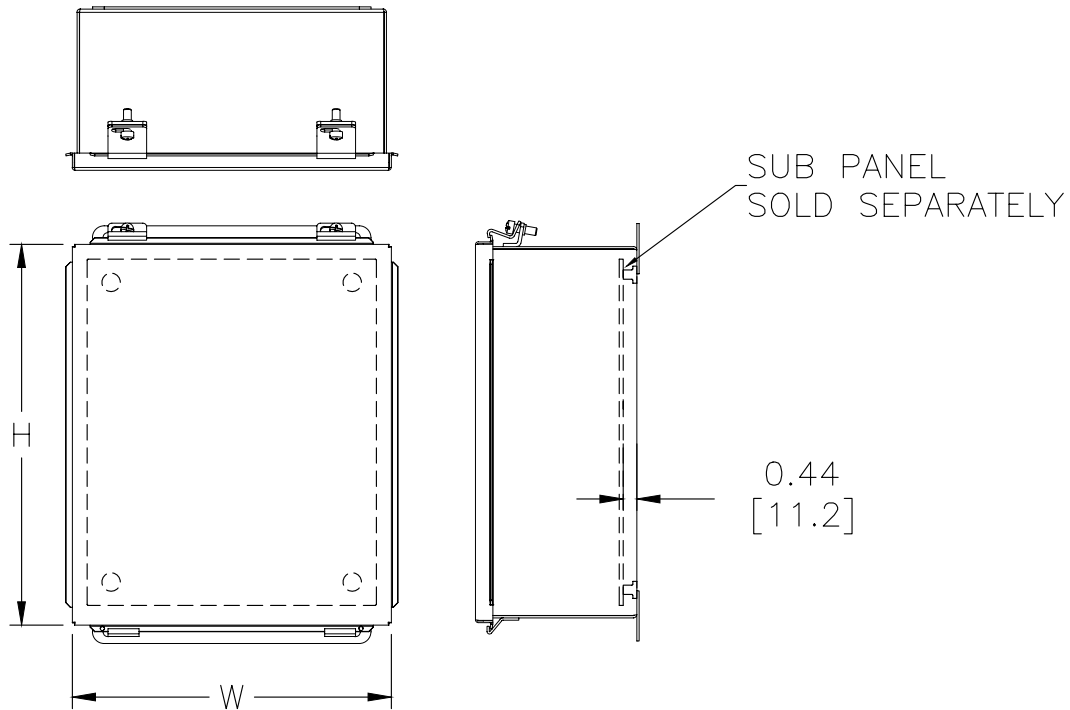
Enclosure Shipping Schedule				
Same day	1 - 7 days	1 - 10 days	1 - 15 days	1 - 20 days

Color indicates shipping lead time in business days.

NEMA 12 and 13 Lift-Off Cover Wall Mount

Dimensions

in [mm]



NOTES:

1. PANELS ARE 14GA STEEL.
2. PANEL SCREWS ARE #10-32 PAN HEAD.
3. TWO CLAMPS ARE USED IF W=8" OR MORE.
4. CHAIN IS SUPPLIED BUT NOT SHOWN.

See our website: www.AutomationDirect.com for complete engineering drawings.

Enclosure Subpanels

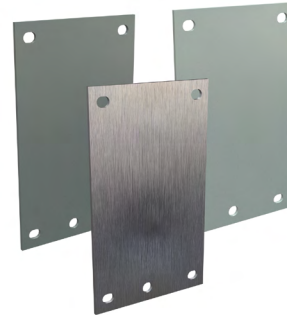


Subpanels

Subpanels are not included with most enclosures and must be purchased separately. The specifications table for each enclosure family lists the part number of the subpanel that goes with each enclosure.

Subpanels for Small NEMA 12 (B) and NEMA 4 (BN4) Enclosures

- 14 gauge (painted, stainless, and galvanized)
- Painted steel subpanels are white polyester powder over phosphatized surfaces
- Galvanized subpanels have a conductive finish (no paint)
- Subpanels fit the following enclosures: B, B_CH, BN4, BN4_CH, BN4_CHQT, BN4_SS, BN4_CHSS, BN4_CHSSA, BN4_CHQTSS, BN4_CHQTSSA ("_" refers to dimensions).



Subpanels for B and BN4 Enclosures							
Painted Steel	Price	304 Stainless Steel	Price	Galvanized	Price	Nominal Enclosure Size HxW	Subpanel Size AxB
P0604	\$3.00	P0604SS	\$11.00	P0604G	\$3.00	6 x 4	4.88 x 2.88 [124 x 73]
P0606	\$3.25	P0606SS	\$13.50	P0606G	\$3.25	6 x 6	4.88 x 4.88 [124 x 124]
P0806	\$4.00	P0806SS	\$16.00	P0806G	\$4.00	8 x 6	6.88 x 4.88 [175 x 124]
P0808	\$4.75	-		P0808G	\$4.75	8 x 8	6.88 x 6.88 [175 x 175]
P1008	\$5.50	P1008SS	\$23.00	P1008G	\$5.50	10 x 8	8.88 x 6.88 [226 x 175]
P1010	\$7.50	-		P1010G	\$7.50	10 x 10	8.88 x 8.88 [226 x 226]
P1206	\$6.00	-		P1206G	\$6.00	12 x 6	10.88 x 4.88 [276 x 124]
P1210	\$7.75	P1210SS	\$30.00	P1210G	\$7.75	12 x 10	10.88 x 8.88 [276 x 226]
P1212	\$9.25	P1212SS	\$38.00	P1212G	\$9.25	12 x 12	10.88 x 10.88 [276 x 276]
P1408	\$8.25	-		P1408G	\$8.25	14 x 8	12.88 x 6.88 [327 x 175]
P1412	\$10.00	P1412SS	\$43.50	P1412G	\$10.00	14 x 12	12.88 x 10.88 [327 x 276]
P1610	\$11.00	-		P1610G	\$11.00	16 x 10	14.88 x 8.88 [378 x 226]
P1614	\$12.00	P1614SS	\$57.00	P1614G	\$12.00	16 x 14	14.88 x 12.88 [378 x 327]

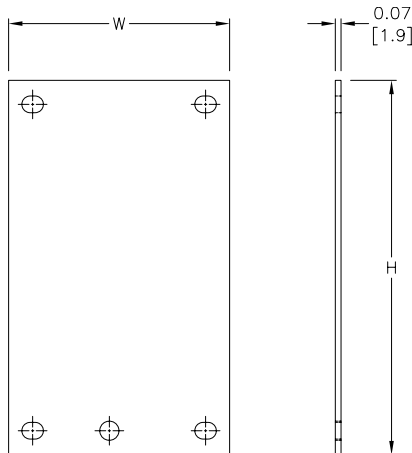
Notes: Dimensions in inches (millimeters). Letters in table correspond to letters on dimensional drawing.

Enclosure Shipping Schedule				
Same day	1 - 7 days	1 -10 days	1 - 15 days	1 - 20 days

Color indicates shipping lead time in business days.

Dimensions

in [mm]



See our website: www.AutomationDirect.com for complete engineering drawings.