

NEMA 12 and 13 Large Continuous Hinge Wall Mount



Application

Designed to house electrical controls, terminals, instruments and components. Provides protection from dust, dirt, oil, and water.

Construction

- Bodies and doors fabricated from 14 gauge steel
- Continuously welded seams ground smooth
- Doors are sealed with poured in place polyurethane gasket
- External screw clamps on door
- Continuously hinged door is removable by pulling hinge pin
- Collar studs are provided for mounting optional subpanels
- External mounting feet
- Grounding provisions provided
- Uses WABN4JIC clamp

Finish

- ANSI 61 gray polyester powder light texture inside and out over phosphatized surfaces

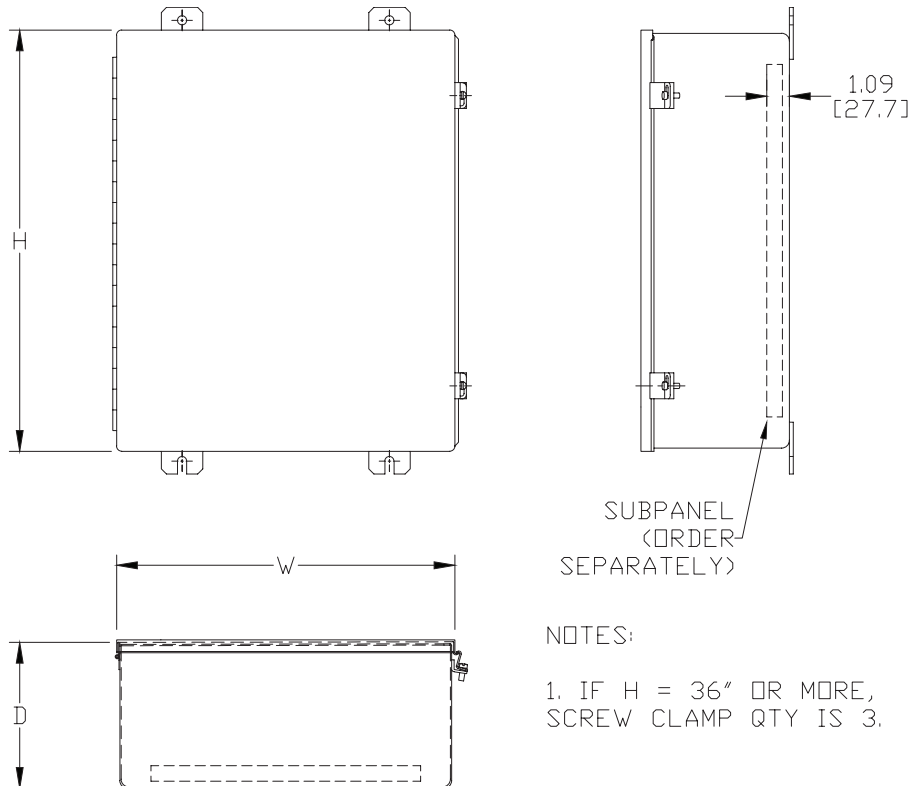
Listings

- UL 50, Types 12 and 13 [UL Files E6924]
- NEMA/EEMAC Type 12 and 13
- JIC EL-1-71



Note: Do NOT use NPxxxxC subpanels in NEMA 1, NEMA 4 and 4X, and NEMA 12 enclosures. For example: Subpanel NP1612C will not fit enclosure WA161206FM [NP1612 is the correct subpanel]. Only use NPxxxx subpanels in NEMA 1, NEMA 4 and 4X, and NEMA 12 enclosures.

Dimensions in [mm]



- NOTES:
1. IF H = 36" OR MORE, SCREW CLAMP QTY IS 3.

See our website: www.AutomationDirect.com for complete engineering drawings.

NEMA 12 and 13 Large Continuous Hinge Wall Mount



Enclosure Shipping Schedule					
Same day	1 - 5 days	1 - 7 days	1 - 10 days	1 - 15 days	1 - 20 days

Color indicates shipping lead time in business days.

NEMA 12 and 13 Large Continuous Hinge Wall Mount						
Part Number	Price	Enclosure Size HxWxD	Painted Steel Subpanel	Stainless Steel Subpanel	Galvanized Steel Subpanel	Perforated Subpanel
B201607CH	\$357.00	20.31 x 16.50 x 7.24 [516 x 419 x 184]	NP2016	NP2016SS	NP2016G	NP2016PP
B201609CH	\$382.00	23.31 x 16.50 x 9.24 [516 x 419 x 235]	NP2016	NP2016SS	NP2016G	NP2016PP
B202007CH	\$395.00	20.31 x 20.50 x 7.24 [516 x 521 x 184]	NP2020	NP2020SS	NP2020G	NP2020PP
B202009CH	\$424.00	20.31 x 20.50 x 9.24 [516 x 521 x 235]	NP2020	NP2020SS	NP2020G	NP2020PP
B242007CH	\$433.00	24.31 x 20.50 x 7.24 [617 x 521 x 184]	NP2420	NP2420SS	NP2420G	NP2420PP
B242009CH	\$464.00	24.31 x 20.50 x 9.24 [617 x 521 x 235]	NP2420	NP2420SS	NP2420G	NP2420PP
B242407CH	\$477.00	24.31 x 24.50 x 7.24 [617 x 622 x 184]	NP2424	NP2424SS	NP2424G	NP2424PP
B242409CH	\$512.00	24.31 x 24.50 x 9.24 [617 x 622 x 235]	NP2424	NP2424SS	NP2424G	NP2424PP
B242411CH	\$576.00	24.31 x 24.50 x 11.24 [617 x 622 x 285]	NP2424	NP2424SS	NP2424G	NP2424PP
B302007CH	\$491.00	30.31 x 20.50 x 7.24 [770 x 521 x 184]	NP3020	NP3020SS	NP3020G	-
B302009CH	\$526.00	30.31 x 20.50 x 9.24 [770 x 521 x 235]	NP3020	NP3020SS	NP3020G	-
B302409CH	\$581.00	30.31 x 24.50 x 9.24 [770 x 622 x 235]	NP3024	NP3024SS	NP3024G	NP3024PP
B302413CH	\$617.00	30.31 x 24.50 x 13.24 [770 x 622 x 336]	NP3024	NP3024SS	NP3024G	NP3024PP
B362407CH	\$609.00	36.31 x 24.50 x 7.24 [922 x 622 x 184]	NP3624	NP3624SS	NP3624G	NP3624PP
B362409CH	\$652.00	36.31 x 24.50 x 9.24 [922 x 622 x 235]	NP3624	NP3624SS	NP3624G	NP3624PP
B362411CH	\$695.00	36.31 x 24.50 x 11.24 [922 x 622 x 285]	NP3624	NP3624SS	NP3624G	NP3624PP
B363009CH	\$748.00	36.31 x 30.50 x 9.24 [922 x 775 x 235]	NP3630	NP3630SS	NP3630G	NP3630PP
B363013CH	\$841.00	36.31 x 30.50 x 13.24 [922 x 775 x 336]	NP3630	NP3630SS	NP3630G	NP3630PP
B423609CH	\$976.00	42.31 x 36.50 x 9.24 [1075 x 927 x 235]	NP4236	NP4236SS	NP4236G	NP4236PP
B483611CH	\$1,059.00	48.31 x 36.50 x 11.24 [1227 x 927 x 285]	NP4836	NP4836SS	NP4836G	NP4836PP

Notes: Subpanels must be ordered separately.
 Dimensions in inches (millimeters).
 Letters in table correspond to letters on dimensional drawings.

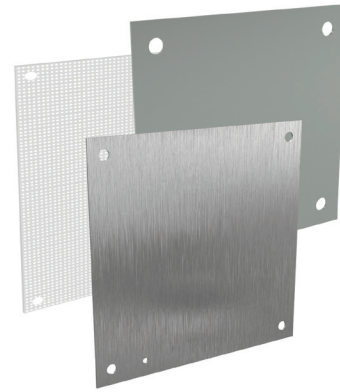
Enclosure Subpanels



Subpanels for NEMA 1, 12, 4 and 4X Wall Mount Enclosures and WC9 NEMA 12 Operator Consoles

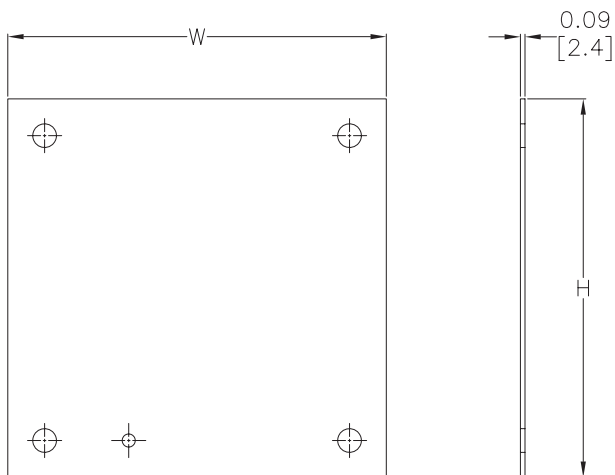
- 12 gauge steel (perforated subpanels are 14 gauge)
- Subpanels with any side over 17" have 3/4" flange on all sides
- Painted steel and perforated subpanels are white polyester powder over phosphatized surfaces
- Galvanized subpanels have a conductive finish (no paint)
Panels listed fit the following enclosures:
- NEMA 1 large (N1C, 42in width and wider)
- NEMA 12 single door wall mount (N12)
- NEMA 12 two door wall mount (WA_WF)
- NEMA 12 single door flush wall mount (WA_FM)
- NEMA 4 (N4) and 4X (SSN) single door wall mount
- NEMA 12 operator consoles (WC9)
- NEMA 12 Wall Disconnect (SDN12_PL & ABN12)
- NEMA 4 & 4X Wall Mount Disconnect (SSN4 & SSN4X)

NOTE: Use NPxxx subpanels in NEMA 1, NEMA 4 and 4X, and NEMA 12 enclosures only. Do NOT use NPxxx subpanels in N412 Ultimate Series enclosures with a C in the suffix.



Dimensions

in [mm]



Perforated panels have 0.13" diameter holes at 0.25" spacing.

NOTE:
SUBPANELS LARGER THAN
20 X 20 HAVE (2) 0.31"
GROUND HOLES.

See our website: www.AutomationDirect.com for complete engineering drawings.

Enclosures Subpanels



Enclosure Shipping Schedule					
Same day	1 - 5 days	1 - 7 days	1 - 10 days	1 - 15 days	1 - 20 days

Color indicates shipping lead time in business days.

Subpanels for NEMA 1, 12, 4 and 4X Wall Mount Enclosures and WC9 NEMA 12 Operator Consoles									
Painted Steel	Price	Galvanized	Price	Perforated	Price	304 Stainless Steel	Price	Nominal Enclosure Size HxW	Subpanel Size AxB
NP1212	\$16.25	NP1212G	\$23.00	-	-	-	-	12 x 12	9.00 x 9.00 [229 x 229]
NP1224	\$40.00	NP1224G	\$40.00	-	-	-	-	24 x 12	9.00 x 21.00 [229 x 533]
NP1612	\$29.00	NP1612G	\$29.00	NP1612PP	\$29.00	NP1612SS	\$76.00	12 x 16 16 x 12	13.00 x 9.00 [330 x 229]
NP1616	\$35.50	NP1616G	\$35.50	NP1616PP	\$35.50	NP1616SS	\$93.00	16 x 16	13.00 x 13.00 [330 x 330]
NP2012	\$33.50	NP2012G	\$33.50	-	-	-	-	12 x 20 20 x 12	17.00 x 9.00 [432 x 229]
NP2016	\$42.50	NP2016G	\$42.50	NP2016PP	\$42.50	NP2016SS	\$112.00	20 x 16 16 x 20	17.00 x 13.00 [432 x 330]
NP2020	\$51.00	NP2020G	\$51.00	NP2020PP	\$51.00	NP2020SS	\$145.00	20 x 20	17.00 x 17.00 [432 x 432]
NP2416	\$49.00	NP2416G	\$53.00	-	-	NP2416SS	\$139.00	24 x 16	21.00 x 13.00 [533 x 330]
NP2420	\$66.00	NP2420G	\$66.00	NP2420PP	\$66.00	NP2420SS	\$176.00	20 x 24 24 x 20	21.00 x 17.00 [533 x 432]
NP2424	\$76.00	NP2424G	\$76.00	NP2424PP	\$76.00	NP2424SS	\$205.00	24 x 24	21.00 x 21.00 [533 x 533]
NP3016	\$66.00	NP3016G	\$66.00	-	-	-	-	30 x 16	27.00 x 13.00 [686 x 330]
NP3020	\$79.00	NP3020G	\$79.00	-	-	NP3020SS	\$236.00	30 x 20	27.00 x 17.00 [686 x 432]
NP3024	\$92.00	NP3024G	\$92.00	NP3024PP	\$92.00	NP3024SS	\$248.00	24 x 30 30 x 24	27.00 x 21.00 [686 x 533]
NP3030	\$129.00	NP3030G	\$129.00	NP3030PP	\$129.00	NP3030SS	\$397.00	30 x 30	27.00 x 27.00 [686 x 686]
NP3624	\$110.00	NP3624G	\$110.00	NP3624PP	\$110.00	NP3624SS	\$339.00	36 x 24	33.00 x 21.00 [838 x 533]
NP3630	\$147.00	NP3630G	\$147.00	NP3630PP	\$147.00	NP3630SS	\$389.00	30 x 36 36 x 30	33.00 x 27.00 [838 x 686]
NP3636	\$172.00	NP3636G	\$172.00	NP3636PP	\$172.00	NP3636SS	\$470.00	36 x 36	33.00 x 33.00 [838 x 838]
NP4024	\$132.00	-	-	-	-	-	-	40 x 24	37.00 x 21.00 [940 x 533]
NP4224	\$126.00	NP4224G	\$126.00	-	-	-	-	42 x 24	39.00 x 21.00 [991 x 533]
NP4230	\$168.00	NP4230G	\$168.00	NP4230PP	\$168.00	NP4230SS	\$495.00	42 x 30	39.00 x 27.00 [991 x 686]
NP4236	\$198.00	NP4236G	\$198.00	NP4236PP	\$198.00	NP4236SS	\$593.00	42 x 36	39.00 x 33.00 [991 x 838]
NP4824	\$143.00	NP4824G	\$143.00	-	-	-	-	48 x 24	45.00 x 21.00 [1143 x 533]
NP4830	\$188.00	NP4830G	\$188.00	-	-	-	-	48 x 30	45.00 x 27.00 [1143 x 686]
NP4836	\$223.00	NP4836G	\$223.00	NP4836PP	\$223.00	NP4836SS	\$643.00	48 x 36	45.00 x 33.00 [1143 x 838]
NP6030	\$231.00	NP6030G	\$250.00	-	-	-	\$189.00	60 x 30	57.00 x 27.00 [1448 x 686]
NP6036	\$275.00	NP6036G	\$275.00	NP6036PP	\$275.00	NP6036SS	\$848.00	60 x 36	57.00 x 33.00 [1448 x 838]
NP7230	\$266.00	NP7230G	\$288.00	-	-	-	-	72 x 30	69.00 x 27.00 [1753 x 686]
NP7236	\$326.00	NP7236G	\$353.00	-	-	-	-	72 x 36	69.00 x 33.00 [1753 x 838]

Notes: Dimensions in inches [millimeters].
 Letters in table correspond to letters on dimensional drawing.
 Disconnect enclosures will be up to 2 inches [51mm] wider than width dimensions in this table.