

# NEMA 12 Heavy Duty Freestanding Disconnect Enclosures, WAXM\_U Series



**WAXM\_U Series**

## Applications

Designed to house the following:

- **AutomationDirect.com** NEMA 1/12 Flexible shaft handle for Molded Case Circuit Breakers (MCCBs). Series F\_S03C flex handle mechanisms are available in four sizes to actuate all AutomationDirect.com MCCBs from 15 Amps up to 600 Amps. See Circuit Protection section for more information.
- **Allen-Bradley** Bulletin 1494F flange-mounted disconnect switches and Bulletin 1494D flange-mounted operators for circuit breakers. Allen-Bradley Bulletin 1494V variable depth flange-operated disconnect switches and circuit breaker mechanisms
- **ABB Controls** flange-mounted variable depth operating mechanisms for disconnect switches and circuit breakers
- **Cutler-Hammer/Westinghouse** Type C361 disconnect switches and operator mechanisms. Cutler-Hammer Type C371 circuit breaker operating mechanisms; also Type SM safety handle mechanisms and Flex Shaft™ handle operators for circuit breakers
- **Fuji Electric** NEMA 12 flexible shaft handle for Molded Case Circuit Breakers (MCCBs). Series BW9F flex handle mechanisms are available in three sizes to actuate all Fuji Electric MCCBs from 15 Amps to 400Amps. See the Circuit Protection section for more information on the MCCBs.

- **General Electric** Type STDA flange handles and variable depth operating mechanisms for disconnect switches and circuit breakers; also Spectra Flex™ cable operators for circuit breakers
- **I-T-E** Max-Flex™ flange-mounted variable depth operating handles for disconnect switches and circuit breakers
- **Square D** disconnect switches and circuit breakers used with Class 9422 flange-mounted variable depth operating mechanisms or cable mechanism  
*These enclosures will not accept Class 9422 bracket-mounted disconnect devices or Class 9422TG1 or TG2 devices.*

## Construction

- 10 gauge steel bodies and doors
- Removable 10 gauge steel subpanels included and mounted on collar studs
- Smooth-ground continuous-welded seams
- Body stiffeners for extra rigidity
- Heavy duty lifting eyes and provisions for fluorescent lighting
- Heavy gauge lift off hinges
- 3-point padlocking handles on all doors
- Panel supports
- Removable center posts allow easy panel installation.
- Print pocket
- Grounding provisions
- Doors have closed cell neoprene gasket
- Unless specified, the far right door is considered to be the "Master" door. All other doors are considered slave doors

- The mechanical interlock is activated by the master door which prevents the slave doors from being opened first. Doors can be closed in any order.
- Disconnects come with a universal cutout which provides mounting for most disconnect operators by using operator adapters
- FTC rolled lip around all sides of opening keeps out liquids and contaminants

## Finish

- ANSI 61 gray polyester powder inside and out over phosphatized surfaces
- Included subpanels are white polyester powder over phosphatized surfaces

## Listings

- UL 508, Type 12, UL File E64791
- CSA Certified, Type 12, CSA File LL66078
- NEMA/EEMAC Type 12
- JIC EL-1-71



Note:

- Disconnect switch or circuit breakers, operating handle and operating mechanism must be ordered separately.
- **Operator adapter plates are required with this enclosure series and must be purchased separately.** Select the proper operator adapter for the brand and type of disconnect being used (page e32-129).
- Make sure the disconnect device you are using will fit the enclosure size you choose.

### Enclosure Shipping Schedule

Same day	1 - 7 days	1 -10 days	15 days
----------	------------	------------	---------

Color indicates shipping lead time in business days.

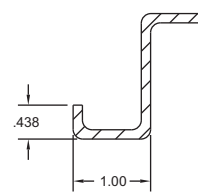
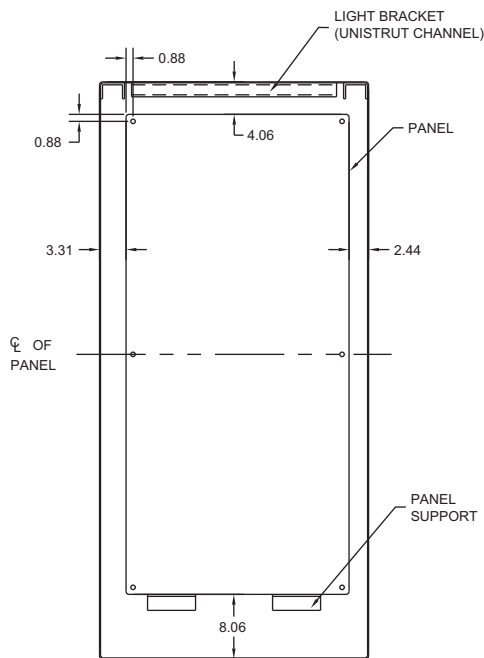
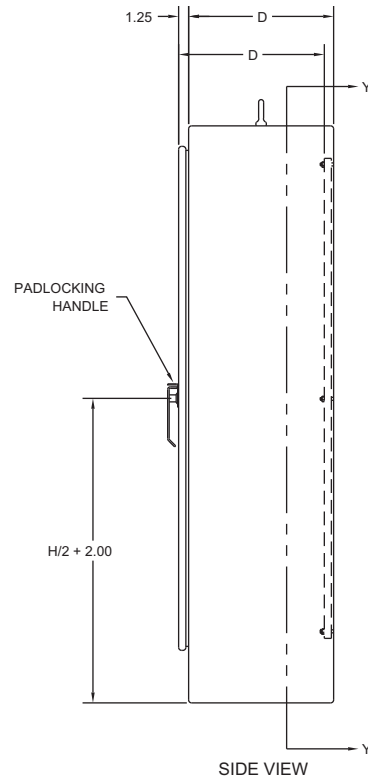
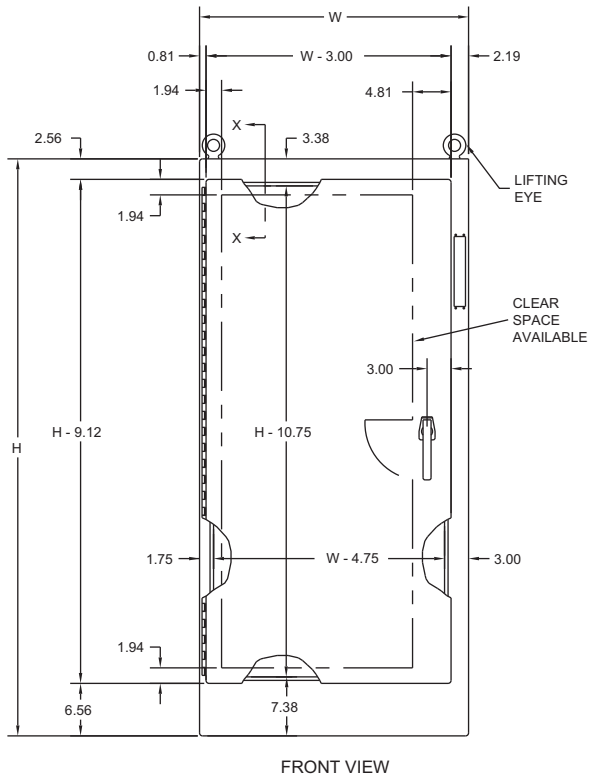
# NEMA 12 Heavy Duty Freestanding Disconnect Enclosures, WAXM\_U Series

Part Number	Price	Body/Door Gauge	Enclosure Size HxWxD	Number of Subpanels	Subpanel Size AxB
<b>Single Door</b>					
WA72XM2718U	<--->	10/10	72x27x18 (1832x699x460)	1	60x21 (1524x552)
WA72XM3318U	<--->	10/10	72x33x18 (1832x851x460)	1	60x27 (1524x705)
WA72XM3918U	<--->	10/10	72x39x18 (1832x1003x460)	1	60x33 (1524x857)
WA84XM3918U	<--->	10/10	84x39x18 (2137x1003x460)	1	72x33 (1829x857)
WA90XM3920U	<--->	10/10	90x39x20 (2289x1003x511)	1	78x33 (1981x857)
WA90XM3924U	<--->	10/10	90x39x24 (2289x1003x613)	1	78x33 (1981x857)
<b>Two Door</b>					
WA72XM5318U	<--->	10/10	72x53x18 (1832x1365x460)	1	60x48 (1524x1219)
WA72XM6518U	<--->	10/10	72x65x18 (1832x1670x460)	1	60x60 (1524x1524)
WA72XM7718U	<--->	10/10	72x77x18 (1832x1975x460)	1	60x72 (1524x1829)
WA72XM7724U	<--->	10/10	72x77x24 (1832x1975x613)	1	60x72 (1524x1829)
WA84XM7718U	<--->	10/10	84x77x18 (2137x1975x461)	1	72x72 (1829x1829)
WA90XM7720U	<--->	10/10	90x77x20 (2289x1975x511)	1	78x72 (1981x1829)
WA90XM7724U	<--->	10/10	90x77x24 (2289x1975x613)	1	78x72 (1981x1829)
<b>Three Door</b>					
WA72XM3EQ18U	<--->	10/10	72x99x18 (1832x2527x460)	1	60x60 (1524x1524)
				1	60x27 (1524x705)
WA72XM3EW18U	<--->	10/10	72x117x18 (1832x2985x460)	1	60x72 (1524x1829)
				1	60x33 (1524x857)
WA84XM3EW18U	<--->	10/10	84x117x18 (2137x2985x460)	1	72x72 (1829x1829)
				1	72x33 (1829x857)
WA90XM3EW24U	<--->	10/10	90x117x24 (2289x2985x613)	1	78x72 (1981x1829)
				1	78x33 (1981x857)
<b>Four Door</b>					
WA84XM4EW18U	<--->	10/10	84x157x18 (2137x4001x461)	2	72x72 (1829x1829)
<b>Five Door</b>					
WA84XM5EW18U	<--->	10/10	84x197x18 (2137x4997x460)	2	72x72 (1829x1829)
				1	72x33 (1829x857)

**Note: Subpanels are included.**

# NEMA 12 Heavy Duty Freestanding Disconnect Enclosures, WAXM\_U Series - Single Door Style

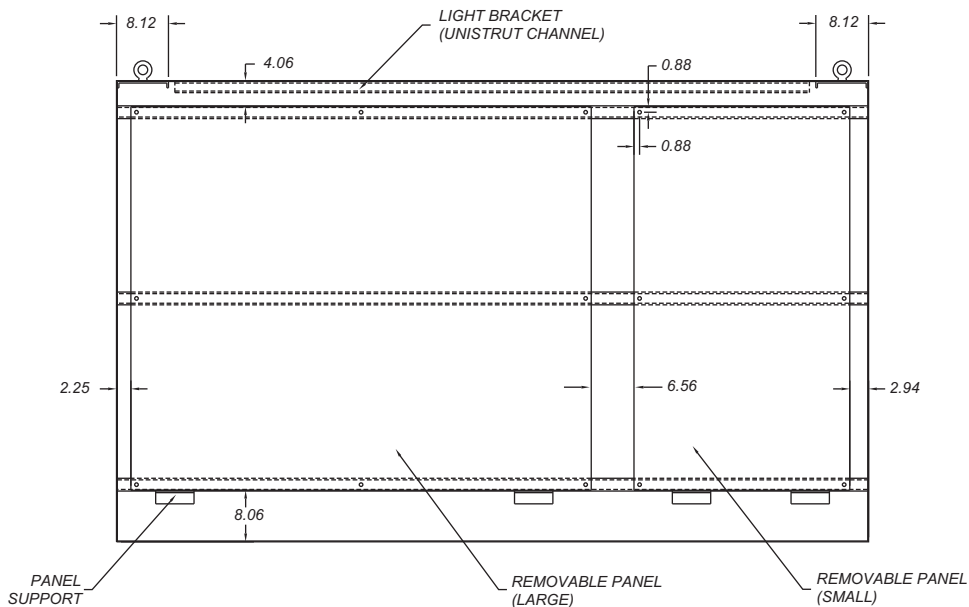
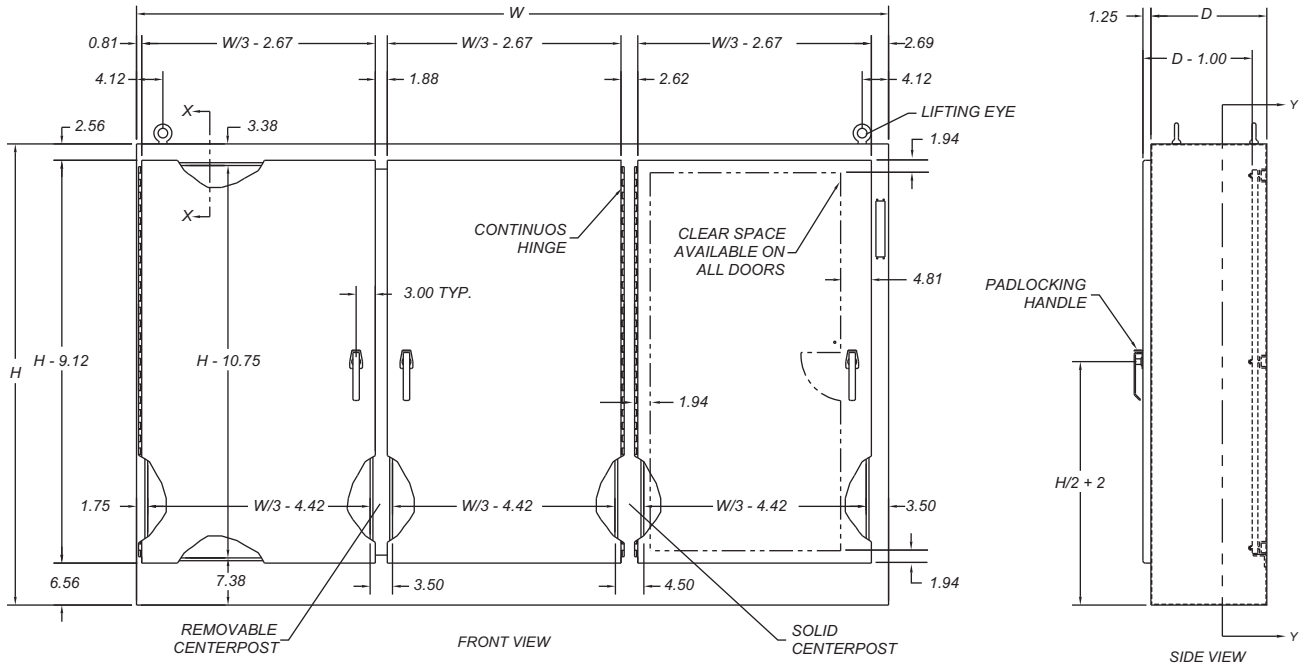
## Dimensions





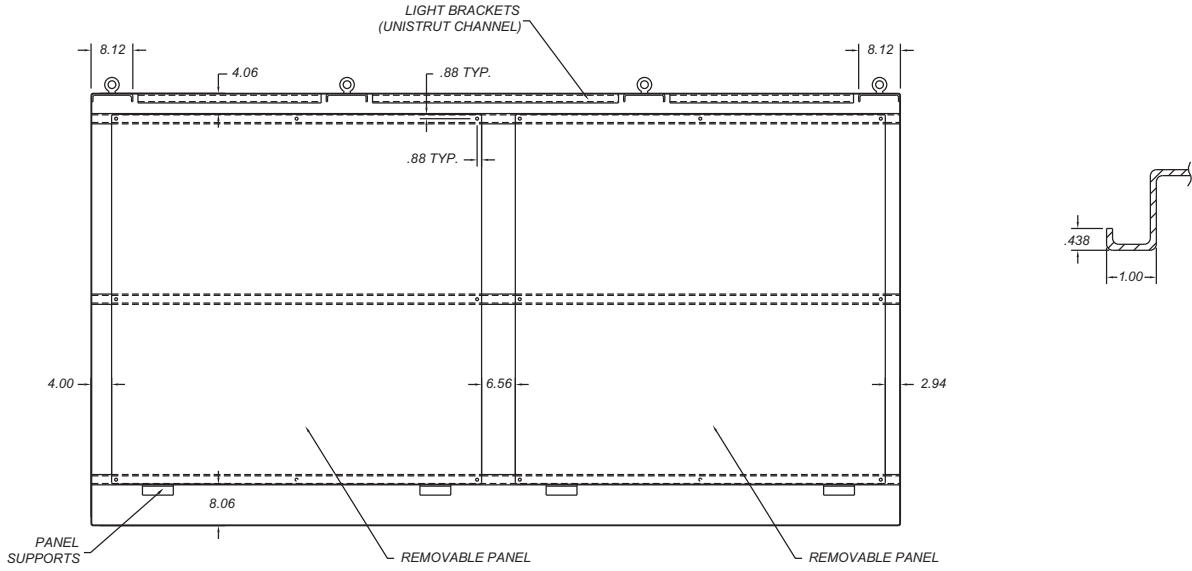
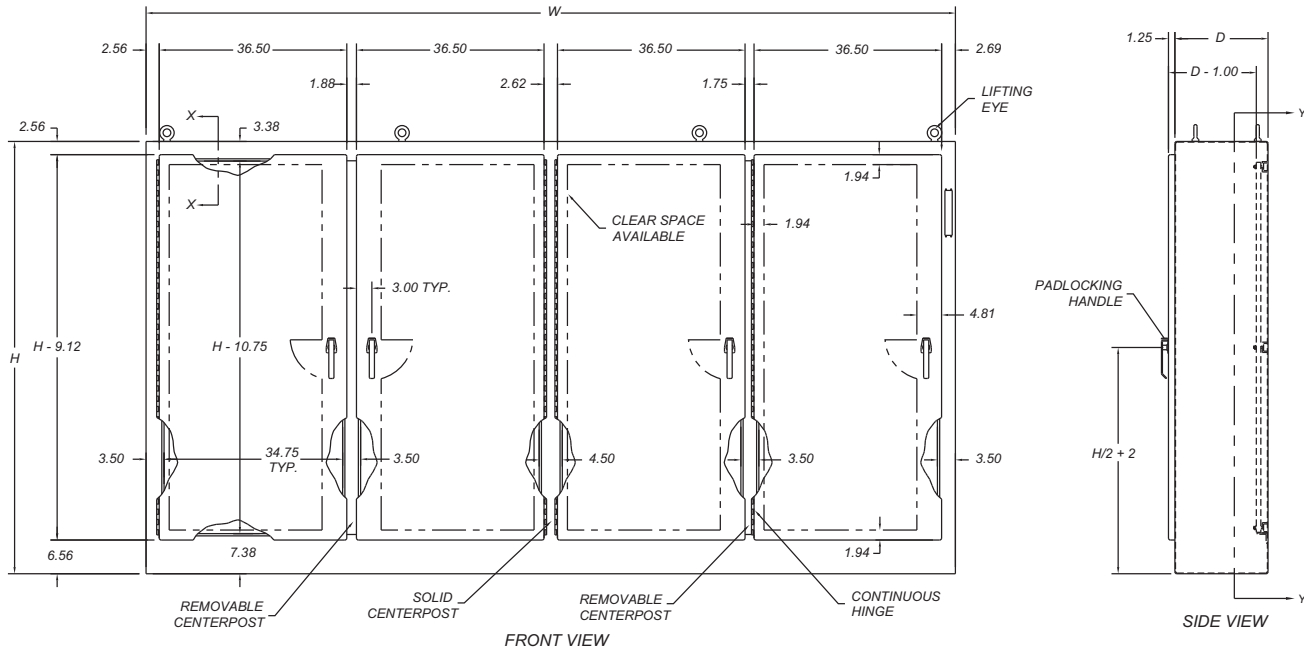
# NEMA 12 Heavy Duty Freestanding Disconnect Enclosures, WAXM\_U Series - Three Door Style

## Dimensions



# NEMA 12 Heavy Duty Freestanding Disconnect Enclosures, WAXM\_U Series - Four Door Style

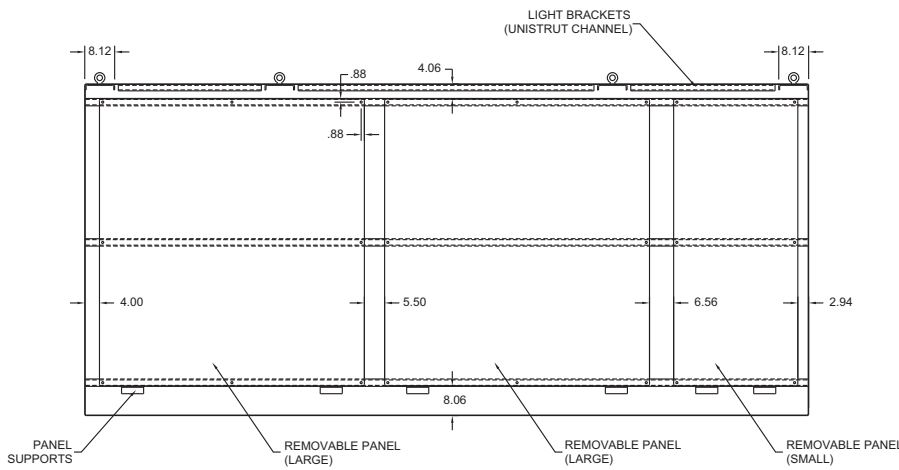
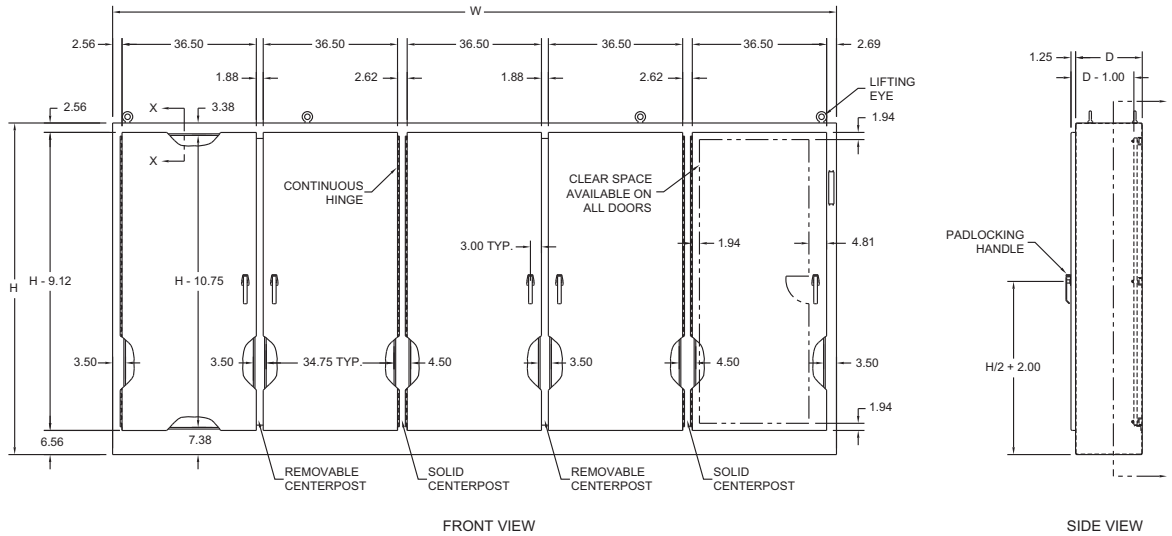
## Dimensions



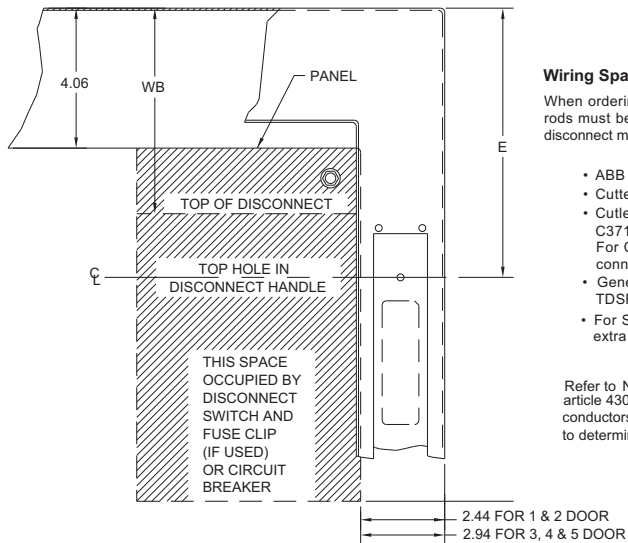
- Company Info.
- PLCs
- Field I/O
- Software
- C-more & other HMI
- AC Drives
- AC Motors
- Power Transmiss.
- Steppers/ Servos
- Motor Controls
- Proximity Sensors
- Photo Sensors
- Limit Switches
- Encoders
- Current Sensors
- Pressure Sensors
- Temp. Sensors
- Pushbuttons/ Lights
- Process
- Relays/ Timers
- Comm.
- Terminal Blocks & Wiring
- Power
- Circuit Protection
- Enclosures
- Tools
- Pneumatics
- Appendix
- Part Index

# NEMA 12 Heavy Duty Freestanding Disconnect Enclosures, WAXM\_U Series - Five Door Style

## Dimensions



### Space Occupied by Disconnect



### Wiring Space "WB" is available when disconnect is installed in the enclosure.

When ordering 24.13 (613mm) deep enclosures, long connecting rods must be ordered. Long connecting rods are available from disconnect manufacturers.

- ABB Controls flange-operated devices
- Cutter-Hammer C361 devices
- Cutter-Hammer C371 operating mechanisms C371E and C371F, order C371CS1 connecting rod. For C371G and C371K, order catalog number C371CS2 connecting rod.
- General Electric TDA devices, order catalog number TDSR extended length drive rod
- For Square D 9422 devices, order catalog number 9422-R extra long operating rod(s). Some devices require two rods.

Refer to National Electrical Code 1996 article 430-10(b) for wiring space required for line side conductors to be connected to disconnect. Verify your application to determine if wiring space is adequate.

# Adapter Plates for Disconnect Enclosures

## OPERATOR ADAPTER PLATES

- Used on all Wiegmann disconnect enclosures with universal flange cutouts
- An operator adapter plate is required to install a disconnect in all Wiegmann WA series enclosures with a universal cutout.
- Operator adapters include an adapter plate and additional parts used to interlock the master door with the disconnect operating mechanism. Panel drilling and installation instructions are furnished with each adapter.
- Each brand and type of disconnect requires a different operator adapter. It is important to select the proper operator adapter and enclosure for the disconnect that you have selected.



Operator Adapter Plates		
Part Number	Price	Type of Operator Adapter
<b>WA21ABA</b>	<-->	Allen-Bradley 1494F and 1494D
<b>WA21ABVA</b>	<-->	Allen-Bradley 1494V
<b>WA21CHVA</b>	<-->	Cutler-Hammer C361, C371 and C371 Flex Shaft™ AutomationDirect.com: F0S03C, F1S03/6C, F3S03C, F4S04C
<b>WA21CHVA</b>	<-->	ABB Controls
<b>WA21FUFA</b>	<-->	Fuji Electric BW9F
<b>WA21GETDA</b>	<-->	General Electric STDA
<b>WA21ITE</b>	<-->	I-T-E Max-Flex™
<b>WA21SDA</b>	<-->	Square D Class 9422, (variable depth and cable mechanism)
<b>WA21WHA</b>	<-->	Cutler Hammer/Westinghouse SM

## BLANK ADAPTER PLATES

- These adapter plates are used to cover flange cutouts in disconnect enclosures when disconnects are not installed. This greatly increases the versatility of the disconnect enclosures, enabling them to also be used as regular Type 12 enclosures.
- Wiegmann blank adapter plates are made from heavy gauge steel, with oil-resistant gasket to maintain the dust-tight and oil-tight qualities of the enclosure.
- All blank adapter plates are painted ANSI 61 gray polyester powder.
- All necessary mounting hardware and instructions are included.



Blank Adapter Plates		
Part Number	Price	Type of Operator Adapter
<b>WA21BAP</b>	<-->	Blank adapter for WA enclosures (hardware included)
<b>WA22BAP</b>	<-->	Blank adapter for ABN12 enclosures (hardware included)
<b>WA3456BAP</b>	<-->	Blank adapter for SDN12, SN4 and SSN4X enclosures (hardware included)

Enclosure Shipping Schedule			
Same day	1 - 7 days	1 - 10 days	15 days
Color indicates shipping lead time in business days.			



# Enclosure Accessories



## JIC and NEMA swing-out panel kits

- Designed to allow mounting of switches, pilot lights and other components near the front of the enclosure for easy access or meter reading
- These kits consist of heavy-gauge brackets and hinges, which are easily installed by drilling small holes in the sides of the enclosure and bolting the bracket in place

- Sealed washers are also furnished to ensure that the enclosure will meet the original NEMA rating after installation.
- These kits are designed for use with standard Wiegmann JIC and NEMA panels.

Part Number	Price	Description
<b>WAJCDFK</b>	<--->	JIC kit
<b>WANADFK</b>	<--->	NEMA kit

Note: Panels must be ordered separately from enclosure.

## Touch-up paint



Part Number: **WAGSE**

Price: <--->

ANSI-61 gray satin enamel in 12 oz. spray can. Use on existing enclosure and subpanel finishes.

## Mounting feet

Part Number: **N412MFK**

Price: <--->

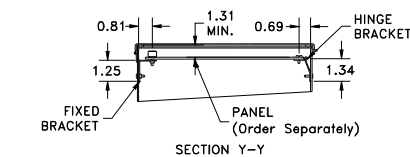
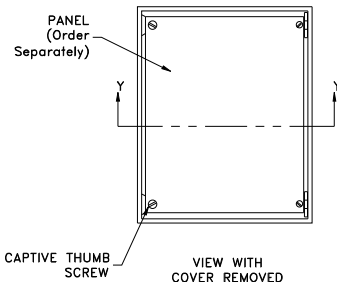
Part Number: **N412MFKSS**

Price: <--->

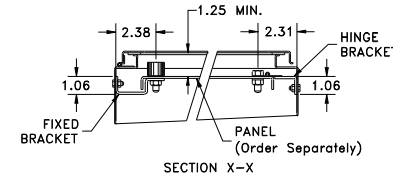
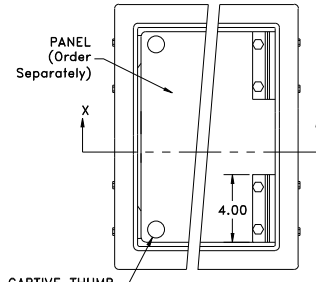
- N412MFK contains four steel external mounting feet
- N412MFKSS contains four stainless steel external mounting feet
- Sealing washers are provided with each kit to maintain NEMA 4 or 12 rating after installation
- N412MFK has a plated finish



### WAJCDFK



### WANADFK



## Print pockets

Print Pockets		
Part Number	Price	Description
<b>WAPPL0606</b>	<--->	6"x6" plastic print pocket can be placed anywhere within enclosure using 2-way adhesive tape flanges. Color: white
<b>WAPPL0810</b>	<--->	8"x10" plastic print pocket can be placed anywhere within enclosure using 2-way adhesive tape flanges. Color: white

### Enclosure Shipping Schedule

Same day	1 - 7 days	1 -10 days
----------	------------	------------

Color indicates shipping lead time in business days.

# Enclosure Accessories



Enclosures for Electrical/Electronic Equipment

## Hole seals



Designed to seal extra pushbutton holes, conduit openings, and knockout openings from dirt, dust, oil and water.

Has quick wing nut and oil-resistant gasket. Steel hole seals are finished with ANSI-61 gray polyester powder. Stainless steel hole seals have a grained finish.

## Casters

- Casters can be used on any enclosure to provide mobility
- Caster kit includes two swivel casters and two stationary casters, along with all necessary hardware
- Zinc-plated steel



## Panel supports

- Provide additional support for panels on which heavy instruments are mounted
- Adjustable so the weight of the panel is partially supported by the bottom of the enclosure
- White polyester powder finish



Part No: Steel Hole Seals	Price	Part No: Stainless Steel Hole Seals	Price	Description	Hole Diameter
<b>WAS050</b>	<--->	<b>WAS050SS</b>	<--->	1/2 inch conduit holes	0.87 (22)
<b>WAS075</b>	<--->	<b>WAS075SS</b>	<--->	3/4 inch conduit holes	1.14 (29)
<b>WAS100</b>	<--->	<b>WAS100SS</b>	<--->	1 inch conduit holes	1.38 (35)
<b>WAS125</b>	<--->	<b>WAS125SS</b>	<--->	1-1/4 inch conduit holes	1.61 (41)
<b>WAS150</b>	<--->	<b>WAS150SS</b>	<--->	1-1/2 inch conduit holes	2.00 (51)
<b>WAS200</b>	<--->	<b>WAS200SS</b>	<--->	2 inch conduit holes	2.52 (64)
<b>WAS250</b>	<--->	-	<--->	2-1/2 inch conduit holes	3.00 (76)
<b>WAS300</b>	<--->	-	<--->	3 inch conduit holes	3.62 (92)
<b>WAS350</b>	<--->	-	<--->	3-1/2 inch conduit holes	4.13 (105)
<b>WAS400</b>	<--->	-	<--->	4 inch conduit holes	4.64 (118)
<b>WASPB</b>	<--->	<b>WASPBSS</b>	<--->	Standard oil tight pushbutton holes	1.18 (30)
<b>WASPBG</b>	<--->	<b>WASPBGSS</b>	<--->	Miniature oil tight pushbutton holes	0.87 (22)

Note: Dimensions in inches (millimeters)

Caster Kit Part No.	Price	Description
<b>WC10C</b>	<--->	Set of 4 casters, 2 mounting plates and hardware for WC10 consoles
<b>WC12C</b>	<--->	Set of 4 casters, 2 mounting plates and hardware for WC12 consoles

Enclosure Shipping Schedule		
Same day	1 - 7 days	1 -10 days
Color indicates shipping lead time in business days.		

Panel Support Part No.	Price	Description
<b>WAPS03</b>	<--->	Two panel supports for 1-door and 2-door enclosures where distance from bottom of panel to bottom of enclosure is less than 2-1/4 inches
<b>WAPS09</b>	<--->	Two panel supports for freestanding enclosures where distance from bottom of panel to bottom of enclosure is between 2-7/8 inches and 8-1/2 inches