

Disconnect Handle Applications for Wall Mount Disconnect Enclosures

Designed to house the following available at AutomationDirect.com



- AutomationDirect.com NEMA 1/12 Flexible shaft handle for Molded Case Circuit Breakers (MCCBs). Series F_SO_C flex handle mechanisms are available in four sizes to actuate all AutomationDirect MCCBs from 15 amps up to 600 amps. **F0S03C, F0S06C, F1S03C, F1S06C, F3S03C, F3S06C, F4S04C, and F4S06C.**
- Socomec Disconnect switches with cable, flange-mounted cable operator and handles. Handles **37299002** and **37299003**, cable operator **37299903**, and cables **37299992** (3ft) or **37299993** (5ft).
- Fuji Electric NEMA 12 flexible shaft handle for Molded Case Circuit Breakers (MCCBs). Series BW9F flex handle mechanisms are available in four sizes to actuate all Fuji Electric MCCBs from 15 Amps to 800 Amps. **BW9FOCA-15A, BW9FOCA-20A, BW9FOGA-15A, BW9FOGA-20A, BW9FOHA-15A, BW9FOHA-20A, BW9FOJA-15A, and BW9FOJA-20A.**

Disconnect Enclosure Series	Available at AutomationDirect.com		
	AutomationDirect F_SO_C Series	Socomec 37299002 & 37299003	Fuji BW9F series
<i>N412_CD Series</i>	✓	✓	✓
<i>N412_CDSS Series</i>	✓	✓	✓
<i>N412_CDSSA Series</i>	✓	✓	✓
<i>N412_CSTD Series</i>	✓	✓	✓
<i>N412_CSSSTD Series</i>	✓	✓	✓
<i>SDN_PL Series</i>	✓	✓	✓
<i>SN4 Series</i>	✓	✓	✓
<i>ABN12 Series</i>	✗	✗	✗
<i>SSN4X Series</i>	✓	✓	✓
<i>SSN4X_A Series</i>	✓	✓	✓

Designed to house other brands

- Allen-Bradley** Bulletin 1494V, 1494C, 140U, & 194RC disconnect switches with flange-mounted variable-depth operating mechanisms and Bulletin 1494V flange-mounted variable-depth operating mechanisms for circuit breakers. These enclosures will not accept Allen-Bradley Bulletin 1494F disconnect devices or Bulletin 1494D circuit breaker operators.
- ABB Controls** flange-mounted variable-depth operating mechanisms for disconnect switches and circuit breakers.
- Eaton / Cutler-Hammer** Type C361 flange-mounted variable depth.
- Eaton / Cutler-Hammer** Type C361 flange-mounted variable-depth operating mechanisms with disconnect switches and Type C371 flange-mounted variable depth operating mechanisms for circuit breakers; also Flex Shaft™ handle mechanisms for circuit breakers.
- General Electric** Type STDA flange handles and variable depth operating.
- General Electric** Type STDA flange handles and variable depth operating mechanisms for disconnect switches and circuit breakers; also Spectra Flex™ cable operators for circuit breakers.
- SIEMENS** I-T-E Max-Flex flange-mounted variable depth operating handle for disconnect switches and circuit breakers.
- Square D** Class 9422 disconnect switches with flange-mounted variable depth operating mechanisms or cable Industry Standards mechanisms and Class 9422 flange-mounted variable depth operating mechanisms or cable mechanisms for circuit breakers. These enclosures will not accept Square D Class 9422 bracket-mounted disconnect devices, Class 9422TG1, or TG2 devices.

Disconnect Enclosures Series	Other Brands						
	Square D 9422 series	Allen-Bradley 1494F & 1494D series	Allen-Bradley 1494V, 1494C, 140U, 194RC series	ABB Controls	Eaton/Cutler-Hammer C361 & C371 series	General Electric STDA series	Siemens I-T-E Max-Flex Series
<i>N412_CD Series</i>	✓	✗	✓	✓	✓	✓	✓
<i>N412_CDSS Series</i>	✓	✗	✓	✓	✓	✓	✓
<i>N412_CDSSA Series</i>	✓	✗	✓	✓	✓	✓	✓
<i>N412_CSTD Series</i>	✓	✗	✓	✓	✓	✓	✓
<i>N412_CSSSTD Series</i>	✓	✗	✓	✓	✓	✓	✓
<i>SDN_PL Series</i>	✓	✗	✓	✓	✓	✓	✓
<i>SN4 Series</i>	✓	✗	✓	✓	✓	✓	✓
<i>ABN12 Series</i>	✗	✓	✗	✗	✗	✗	✗
<i>SSN4X Series</i>	✓	✗	✓	✓	✓	✓	✓
<i>SSN4X_A Series</i>	✓	✗	✓	✓	✓	✓	✓

NEMA 12 and 13 Single-Door Wall Mount Right-Flanged Disconnect with Handle



Construction

- 14 gauge steel bodies and doors
- Plasma welded seams
- Rolled lip around all sides of opening keeps out liquids and contaminants
- Remove doors easily by pulling continuous hinge pin
- Polyurethane poured-in-place gasket
- External mounting feet
- Collar studs for mounting optional subpanel
- Ground stud in door
- Instructions provided for locating and installing disconnect switches, circuit breakers and operating mechanisms
- Enclosures provided with padlocking, defeater handle and latching system

Finish

- ANSI 61 gray polyester powder inside and out over phosphatized surfaces
- Painted steel and perforated subpanels are white polyester powder over phosphatized surfaces
- Galvanized panels are a conductive finish (unpainted)

Listings

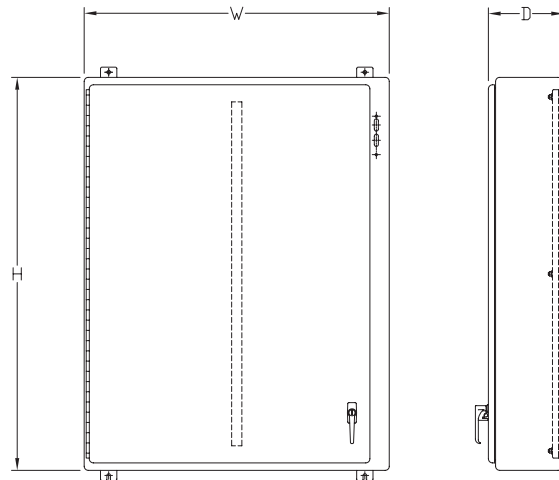
- UL 508, Types 12 & 13 [UL File E64791]
- CSA Certified Type 12 [CSA File LL66078]
- NEMA/EEMAC Types 12 & 13



Notes:

- Disconnect switch or circuit breakers, operating handle, operating mechanism must be ordered separately.
- **Operator adapter plates are not required with this enclosure series.**
- 4 1/2" Handle and latching hardware are included.
- Make sure the disconnect device you are using will fit the enclosure size you choose.

Dimensions



NOTES:

1. SUBPANELS ARE MADE FROM 12 GA STEEL.
2. SUBPANELS HAVE FLANGES ALONG ALL SIDES WHEN EITHER DIMENSION EXCEEDS 17".
3. CATALOG NUMBER SDN12603812A HAS A LARGER CUTOUT IN THE ENCLOSURE FLANGE TO ACCOMMODATE ALLEN-BRADLEY 1494V-H2 AND I-T-E FHOHN OPERATING HANDLES.

NEMA 12 and 13 Single-Door Wall Mount Right-Flanged Disconnect with Handle

NEMA 12 and 13 Single-Door Wall Mount Right-Flanged Disconnect with Handle						
Part Number	Price	Enclosure Size HxWxD	Painted Steel Subpanel	Galvanized Subpanel	Perforated Subpanel	Stainless Steel Subpanel
SDN12202108PL	\$450.00	20.00 x 21.38 x 8.88 [508 x 543 x 226]	NP2020	NP2020G	NP2020PP	NP2020SS
SDN12202110PL	\$470.00	20.00 x 21.38 x 10.88 [508 x 543 x 276]	NP2020	NP2020G	NP2020PP	NP2020SS
SDN12242108PL	\$477.00	24.00 x 21.38 x 8.88 [610 x 543 x 226]	NP2420	NP2420G	NP2420PP	NP2420SS
SDN12242110PL	\$499.00	24.00 x 21.38 x 10.88 [610 x 543 x 276]	NP2420	NP2420G	NP2420PP	NP2420SS
SDN12242508PL	\$509.00	24.00 x 25.38 x 8.88 [610 x 645 x 226]	NP2424	NP2424G	NP2424PP	NP2424SS
SDN12242510PL	\$532.00	24.00 x 25.38 x 10.88 [610 x 645 x 276]	NP2424	NP2424G	NP2424PP	NP2424SS
SDN12302108PL	\$519.00	30.00 x 21.38 x 8.88 [762 x 543 x 226]	NP3020	NP3020G	-	NP3020SS
SDN12302110PL	\$543.00	30.00 x 21.38 x 10.88 [762 x 543 x 276]	NP3020	NP3020G	-	NP3020SS
SDN12302508PL	\$556.00	30.00 x 25.38 x 8.88 [762 x 645 x 226]	NP3024	NP3024G	NP3024PP	NP3024SS
SDN12302510PL	\$582.00	30.00 x 25.38 x 10.88 [762 x 645 x 276]	NP3024	NP3024G	NP3024PP	NP3024SS
SDN12302612PL	\$609.00	30.00 x 25.38 x 12.88 [762 x 645 x 327]	NP3024	NP3024G	NP3024PP	NP3024SS
SDN12362508PL	\$585.00	36.00 x 25.38 x 8.88 [914 x 645 x 226]	NP3624	NP3624G	NP3624PP	NP3624SS
SDN12362510PL	\$632.00	36.00 x 25.38 x 10.88 [914 x 645 x 276]	NP3624	NP3624G	NP3624PP	NP3624SS
SDN12363108PL	\$667.00	36.00 x 31.38 x 8.88 [914 x 797 x 226]	NP3630	NP3630G	NP3630PP	NP3630SS
SDN12363110PL	\$699.00	36.00 x 31.38 x 10.88 [914 x 797 x 276]	NP3630	NP3630G	NP3630PP	NP3630SS
SDN12363116PL	\$798.00	36.00 x 31.37 x 16.88 [914 x 797 x 429]	NP3630	NP3630G	NP3630PP	NP3630SS
SDN12363212PL	\$732.00	36.00 x 31.37 x 12.88 [914 x 797 x 327]	NP3630	NP3630G	NP3630PP	NP3630SS
SDN12423108PL	\$723.00	42.00 x 31.38 x 8.88 [1067 x 797 x 226]	NP4230	NP4230G	NP4230PP	NP4230SS
SDN12423110PL	\$757.00	42.00 x 31.38 x 10.88 [1067 x 797 x 276]	NP4230	NP4230G	NP4230PP	NP4230SS
SDN12423212PL	\$794.00	42.00 x 31.38 x 12.88 [1067 x 797 x 327]	NP4230	NP4230G	NP4230PP	NP4230SS
SDN12423708PL	\$796.00	42.00 x 37.37 x 8.88 [1067 x 949 x 226]	NP4236	NP4236G	NP4236PP	NP4236SS
SDN12423710PL	\$834.00	42.00 x 37.37 x 10.88 [1067 x 949 x 276]	NP4236	NP4236G	NP4236PP	NP4236SS
SDN12423812PL	\$873.00	42.00 x 37.37 x 12.88 [1067 x 949 x 327]	NP4236	NP4236G	NP4236PP	NP4236SS
SDN12483708PL **	\$862.00	48.00 x 37.37 x 8.88 [1219 x 949 x 226]	NP4836	NP4836G	NP4836PP	NP4836SS
SDN12483710PL **	\$902.00	48.00 x 37.38 x 10.88 [1219 x 949 x 276]	NP4836	NP4836G	NP4836PP	NP4836SS
SDN12483812PL **	\$945.00	48.00 x 37.38 x 12.88 [1219 x 949 x 327]	NP4836	NP4836G	NP4836PP	NP4836SS
SDN12483816PL **	\$1,028.00	48.00 x 37.38 x 16.88 [1219 x 949 x 429]	NP4836	NP4836G	NP4836PP	NP4836SS
SDN12603710PL **	\$1,040.00	60.00 x 37.38 x 10.88 [1524 x 949 x 276]	NP6036	NP6036G	NP6036PP	NP6036SS
SDN12603808PL **	\$991.00	60.00 x 37.38 x 8.88 [1524 x 949 x 226]	NP6036	NP6036G	NP6036PP	NP6036SS
SDN12603812PL **	\$1,085.00	60.00 x 37.38 x 12.88 [1524 x 949 x 327]	NP6036	NP6036G	NP6036PP	NP6036SS
SDN12603816PL **	\$1,180.00	60.00 x 37.38 x 16.88 [1524 x 949 x 429]	NP6036	NP6036G	NP6036PP	NP6036SS

Note: Subpanels must be ordered separately.
 Dimensions in inches [millimeters].
 **These enclosures have a closed-cell neoprene gasket, not poured-in-place.

Note: Enclosures 12" and 16" deep can be modified to accept I-T-E Siemens 800 amp and 1200 amp circuit breakers. (When using an I-T-E Siemens circuit breaker and an enclosure with an "H" dimension of 30", 36" or 42", verify the amount of wire bend space required for both the line and load sides.)

Enclosure Shipping Schedule				
Same day	1 - 7 days	1 -10 days	1 - 15 days	1 - 20 days
Color indicates shipping lead time in business days.				

See our website: www.AutomationDirect.com for complete engineering drawings.

Enclosure Subpanels



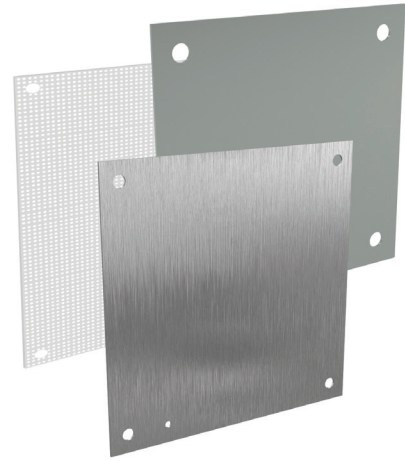
Subpanels for NEMA 1, 12, 4 and 4X Wall Mount Enclosures and WC9 NEMA 12 Operator Consoles

- 12 gauge steel (perforated subpanels are 14 gauge)
- Subpanels with any side over 17" have 3/4" flange on all sides
- Painted steel and perforated subpanels are white polyester powder over phosphatized surfaces
- Galvanized subpanels have a conductive finish (no paint)

Panels listed fit the following enclosures:

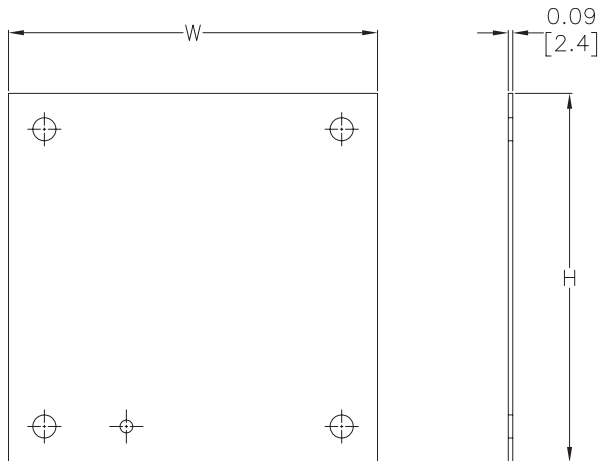
- NEMA 1 large (N1C, 42in width and wider)
- NEMA 12 single door wall mount (N12)
- NEMA 12 two door wall mount (WA_WF)
- NEMA 12 single door flush wall mount (WA_FM)
- NEMA 4 (N4) and 4X (SSN) single door wall mount
- NEMA 12 operator consoles (WC9)
- NEMA 12 Wall Disconnect (SDN12_PL & ABN12)
- NEMA 4 & 4X Wall Mount Disconnect (SSN4 & SSN4X)

NOTE: Use NPxxxx subpanels in NEMA 1, NEMA 4 and 4X, and NEMA 12 enclosures only. Do NOT use NPxxxx subpanels in N412 Ultimate Series enclosures with a C in the suffix.



Dimensions

in [mm]



Perforated panels have 0.13" diameter holes at 0.25" spacing.

NOTE:
SUBPANELS LARGER THAN
20 X 20 HAVE (2) 0.31"
GROUND HOLES.

See our website: www.AutomationDirect.com for complete engineering drawings.

Enclosures Subpanels



Enclosure Shipping Schedule				
Same day	1 - 7 days	1 - 10 days	1 - 15 days	1 - 20 days

Color indicates shipping lead time in business days.

Subpanels for NEMA 1, 12, 4 and 4X Wall Mount Enclosures and WC9 NEMA 12 Operator Consoles									
Painted Steel	Price	Galvanized	Price	Perforated	Price	304 Stainless Steel	Price	Nominal Enclosure Size HxW	Subpanel Size AxB
NP1212	\$13.00	NP1212G	\$17.50	-		-		12 x 12	9.00 x 9.00 [229 x 229]
NP1224	\$32.50	NP1224G	\$32.50	-		-		24 x 12	9.00 x 21.00 [229 x 533]
NP1612	\$23.50	NP1612G	\$23.50	NP1612PP	\$23.50	NP1612SS	\$62.00	12 x 16 16 x 12	13.00 x 9.00 [330 x 229]
NP1616	\$29.00	NP1616G	\$29.00	NP1616PP	\$29.00	NP1616SS	\$76.00	16 x 16	13.00 x 13.00 [330 x 330]
NP2012	\$27.50	NP2012G	\$27.50	-		-		12 x 20 20 x 12	17.00 x 9.00 [432 x 229]
NP2016	\$34.50	NP2016G	\$34.50	NP2016PP	\$34.50	NP2016SS	\$92.00	20 x 16 16 x 20	17.00 x 13.00 [432 x 330]
NP2020	\$41.50	NP2020G	\$41.50	NP2020PP	\$41.50	NP2020SS	\$119.00	20 x 20	17.00 x 17.00 [432 x 432]
NP2416	\$40.00	NP2416G	\$40.00	-		NP2416SS	\$114.00	24 x 16	21.00 x 13.00 [533 x 330]
NP2420	\$54.00	NP2420G	\$54.00	NP2420PP	\$54.00	NP2420SS	\$144.00	20 x 24 24 x 20	21.00 x 17.00 [533 x 432]
NP2424	\$62.00	NP2424G	\$62.00	NP2424PP	\$62.00	NP2424SS	\$168.00	24 x 24	21.00 x 21.00 [533 x 533]
NP3016	\$54.00	NP3016G	\$54.00	-		-		30 x 16	27.00 x 13.00 [686 x 330]
NP3020	\$65.00	NP3020G	\$65.00	-		NP3020SS	\$178.00	30 x 20	27.00 x 17.00 [686 x 432]
NP3024	\$75.00	NP3024G	\$75.00	NP3024PP	\$75.00	NP3024SS	\$203.00	24 x 30 30 x 24	27.00 x 21.00 [686 x 533]
NP3030	\$106.00	NP3030G	\$106.00	NP3030PP	\$106.00	NP3030SS	\$300.00	30 x 30	27.00 x 27.00 [686 x 686]
NP3624	\$90.00	NP3624G	\$90.00	NP3624PP	\$90.00	NP3624SS	\$256.00	36 x 24	33.00 x 21.00 [838 x 533]
NP3630	\$120.00	NP3630G	\$120.00	NP3630PP	\$120.00	NP3630SS	\$318.00	30 x 36 36 x 30	33.00 x 27.00 [838 x 686]
NP3636	\$141.00	NP3636G	\$141.00	NP3636PP	\$141.00	NP3636SS	\$384.00	36 x 36	33.00 x 33.00 [838 x 838]
NP4024	\$108.00	-	-	-		-		40 x 24	37.00 x 21.00 [940 x 533]
NP4224	\$103.00	NP4224G	\$103.00	-		-		42 x 24	39.00 x 21.00 [991 x 533]
NP4230	\$137.00	NP4230G	\$137.00	NP4230PP	\$137.00	NP4230SS	\$374.00	42 x 30	39.00 x 27.00 [991 x 686]
NP4236	\$162.00	NP4236G	\$162.00	NP4236PP	\$162.00	NP4236SS	\$448.00	42 x 36	39.00 x 33.00 [991 x 838]
NP4824	\$117.00	NP4824G	\$117.00	-		-		48 x 24	45.00 x 21.00 [1143 x 533]
NP4830	\$154.00	NP4830G	\$154.00	-		-		48 x 30	45.00 x 27.00 [1143 x 686]
NP4836	\$183.00	NP4836G	\$183.00	NP4836PP	\$183.00	NP4836SS	\$485.00	48 x 36	45.00 x 33.00 [1143 x 838]
NP6030	\$189.00	NP6030G	\$189.00	-		-		60 x 30	57.00 x 27.00 [1448 x 686]
NP6036	\$225.00	NP6036G	\$225.00	NP6036PP	\$225.00	NP6036SS	\$640.00	60 x 36	57.00 x 33.00 [1448 x 838]
NP7230	\$217.00	NP7230G	\$217.00	-		-		72 x 30	69.00 x 27.00 [1753 x 686]
NP7236	\$266.00	NP7236G	\$266.00	-		-		72 x 36	69.00 x 33.00 [1753 x 838]

Notes: Dimensions in inches [millimeters].
 Letters in table correspond to letters on dimensional drawing.
 Disconnect enclosures will be up to 2 inches [51mm] wider than width dimensions in this table.

See our website: www.AutomationDirect.com for complete engineering drawings.