

NEMA 12 Two-Door Wall-Mount



Application

Designed for use in housing electrical and electronic controls, instruments, components and associated wiring. These enclosures incorporate double-hinged doors which provide convenient access. Designed for indoor use in protecting components from dust, dirt, oil and water.



Construction

- Bodies and doors fabricated from 14 gauge steel
- Doors are sealed with poured in place polyurethane
- Continuously welded seams ground smooth
- Grounding provisions provided
- Collar studs are provided for mounting optional subpanel
- External mounting feet are provided for mounting
- Rolled lip around all sides of enclosure opening is provided to exclude liquids and contaminants
- Special overlapping door design eliminates need for center post
- 3-point latching mechanism operates with an oil-tight locking handle.
- Doors are removable by pulling heavy gauge continuous hinge pin
- [Uses WAL2 series handle and WAL2KEY replacement key](#)

Finish

- ANSI 61 gray polyester powder light texture inside and out over phosphatized surfaces

Listings

- UL 508 Type 12 [UL File E64791]
- NEMA/EEMAC Type 12
- JIC EL - 1 - 71



Note: Do NOT use NPxxxC subpanels in NEMA 1, NEMA 4 and 4X, and NEMA 12 enclosures. For example: Subpanel NP1612C will not fit enclosure WA161206FM [NP1612 is the correct subpanel]. Only use NPxxx subpanels in NEMA 1, NEMA 4 and 4X, and NEMA 12 enclosures.

Shipping Schedule

Same day 1 - 5 days 1 - 7 days 1 - 15 days 1 - 20 days

Color indicates shipping lead time in business days.

NEMA 12 Two-Door Wall-Mount

| Part Number | Price | Enclosure SizeHxWxD | Stiffener | Painted Steel Subpanel | Stainless Steel Subpanel | Galvanized Steel Subpanel | Perforated Subpanel |
|----------------------------|------------|---|------------------------|--------------------------|--------------------------|---------------------------|--------------------------|
| WA244208WF | \$846.00 | 24.00 x 42.00 x 9.04 [610 x 1067 x 230] | door: no body: no | NP4224 | — | NP4224G | — |
| WA244808WF | \$917.00 | 24.00 x 48.00 x 9.04 [610 x 1219 x 230] | door: no body: no | NP4824 | — | NP4824G | — |
| WA304210WF | \$1,009.00 | 30.00 x 42.00 x 11.04 [762 x 1067 x 280] | door: no body: yes | NP4230 | NP4230SS | NP4230G | NP4230PP |
| WA304810WF | \$1,096.00 | 30.00 x 48.00 x 11.04 [762 x 1219 x 280] | door: no body: yes | NP4830 | — | NP4830G | — |
| WA306010WF | \$1,311.00 | 30.00 x 60.00 x 11.04 [762 x 1524 x 230] | door: no body: yes | NP6030 | — | NP6030G | — |
| WA364212WF | \$1,214.00 | 36.00 x 42.00 x 13.04 [914 x 1067 x 331] | door: no body: yes | NP4236 | NP4236SS | NP4236G | NP4236PP |
| WA364812WF | \$1,286.00 | 36.00 x 48.00 x 13.04 [914 x 1219 x 331] | door: no body: yes | NP4836 | NP4836SS | NP4836G | NP4836PP |
| WA366012WF | \$1,499.00 | 36.00 x 60.00 x 13.04 [914 x 1524 x 331] | door: no body: yes | NP6036 | NP6036SS | NP6036G | NP6036PP |
| WA424212WF | \$1,338.00 | 42.00 x 42.00 x 13.04 [1067 x 1067 x 331] | door: no body: yes | NPDD4242 | — | NPDD4242G | — |
| WA424812WF | \$1,461.00 | 42.00 x 48.00 x 13.04 [1067 x 1219 x 331] | door: no body: yes | NPDD4842 | — | NPDD4842G | — |
| WA426012WF | \$1,658.00 | 42.00 x 60.00 x 13.04 [1067 x 1524 x 331] | door: yes body: yes | NPDD4260 | — | NPDD4260G | — |
| WA484812WF | \$1,553.00 | 48.00 x 48.00 x 13.03 [1219 x 1219 x 331] | door: no body: yes | NPDD4848 | — | NPDD4848G | — |

Notes: Subpanels must be ordered separately.

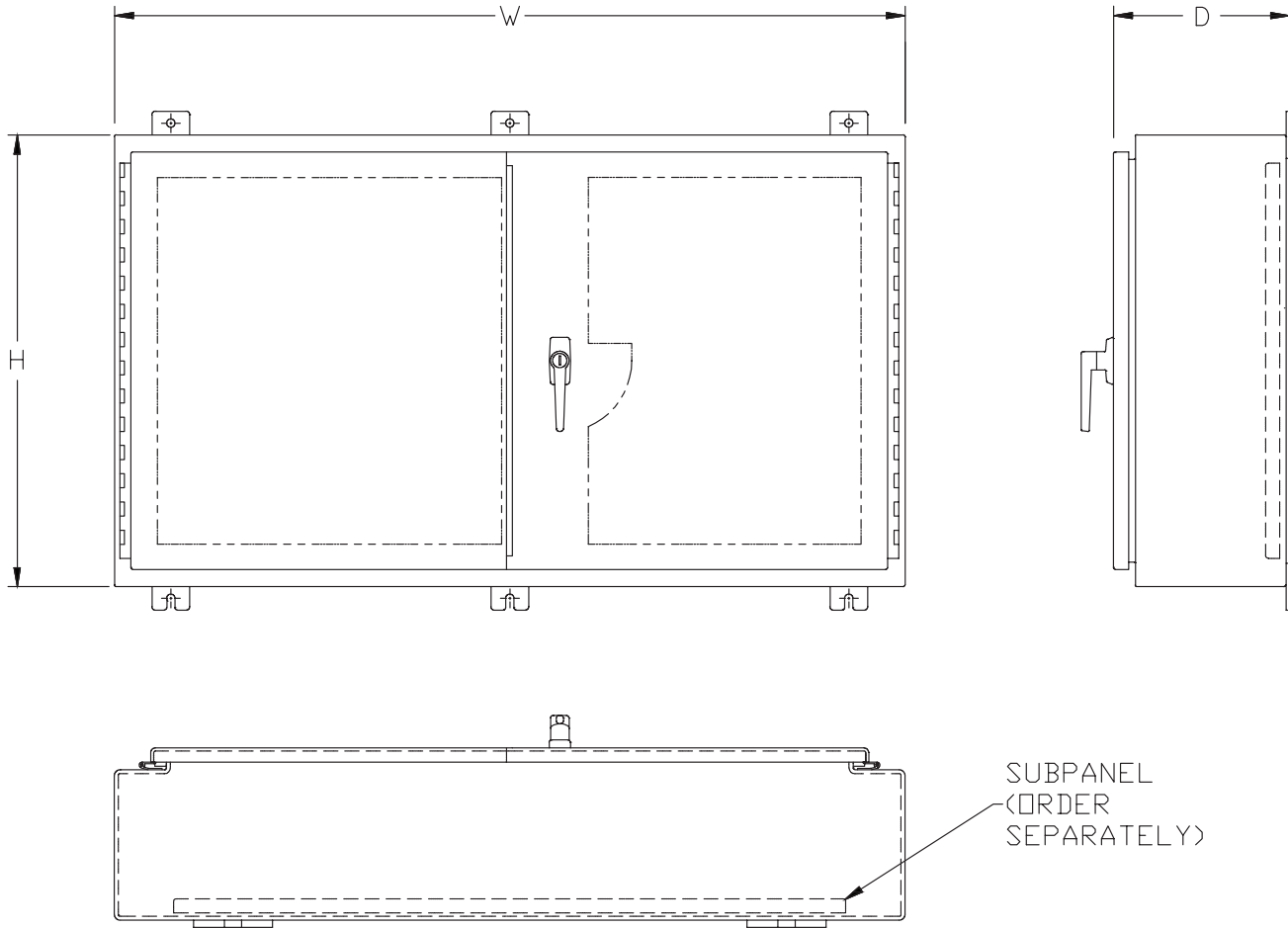
Dimensions in inches [millimeters].

Letters in table correspond to letters on dimensional drawings.

NEMA 12 Two-Door Wall-Mount



Dimensions

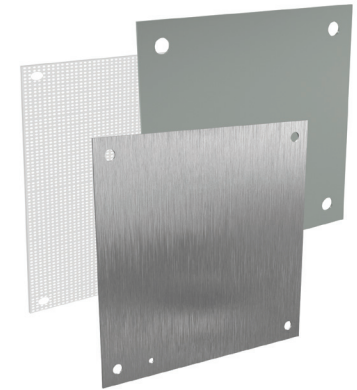


Enclosure Subpanels



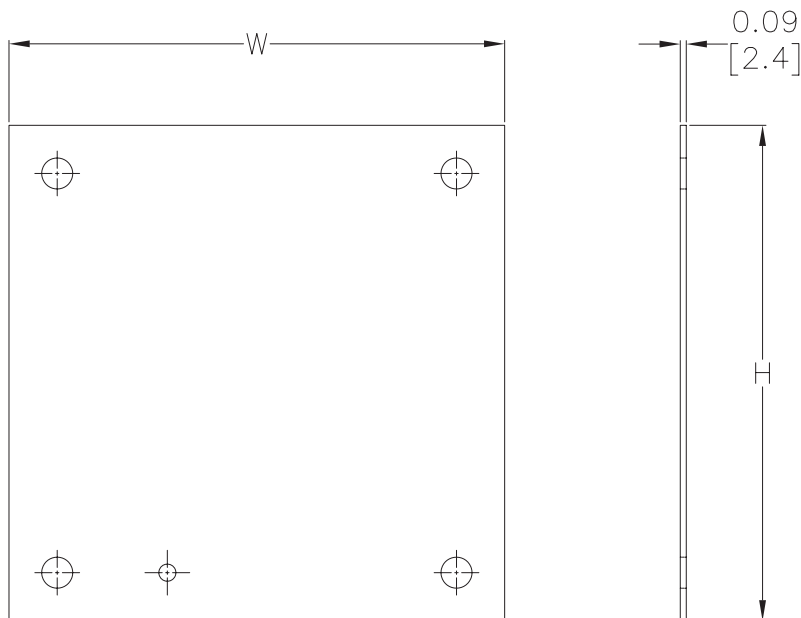
Subpanels for NEMA 1, 12, 4 and 4X Wall-Mount Enclosures and WC9 NEMA 12 Operator Consoles

- 12 gauge steel (perforated subpanels are 14 gauge)
- Subpanels with any side over 17.0 in [432 mm] have 0.25 in [19 mm] flange on all sides
- Painted steel and perforated subpanels are white polyester powder over phosphatized surfaces
- Galvanized subpanels have a conductive finish (no paint) Panels listed fit the following enclosures:
- NEMA 1 large (N1C, 42in width and wider)
- NEMA 12 single door wall-mount (N12)
- NEMA 12 two door wall-mount (WA_WF)
- NEMA 12 single door flush wall-mount (WA_FM)
- NEMA 4 (N4) and 4X (SSN) single door wall-mount
- NEMA 12 operator consoles (WC9)
- NEMA 12 Wall Disconnect (SDN12_PL & ABN12)
- NEMA 4 & 4X Wall-Mount Disconnect (SSN4 & SSN4X)



Note: Use NPxxxx subpanels in NEMA 1, NEMA 4 and 4X, and NEMA 12 enclosures only. Do NOT use NPxxxx subpanels in N412 Ultimate Series enclosures with a C in the suffix.

Dimensions



NOTE:
SUBPANELS LARGER THAN
20 X 20 HAVE (2) 0.31"
GROUND HOLES.

Note: Perforated panels have 0.13 in [3 mm] diameter holes at 0.25 in [6 mm] spacing.

Enclosure Subpanels



| Shipping Schedule | | | | |
|--|------------|------------|-------------|-------------|
| Same day | 1 - 5 days | 1 - 7 days | 1 - 15 days | 1 - 20 days |
| Color indicates shipping lead time in business days. | | | | |

| Subpanels for NEMA 1, 12, 4 and 4X Wall-Mount Enclosures and WC9 NEMA 12 Operator Consoles | | | | | | | | | |
|--|----------|-------------------------|----------|--------------------------|----------|--------------------------|----------|----------------------------|----------------------------|
| Painted Steel | Price | Galvanized | Price | Perforated | Price | 304 Stainless Steel | Price | Nominal Enclosure Size HxW | Subpanel Size AxB |
| NP1212 | \$16.25 | NP1212G | \$23.00 | — | — | — | — | 12 x 12 | 9.00 x 9.00 [229 x 229] |
| NP1224 | \$40.00 | NP1224G | \$40.00 | — | — | — | — | 24 x 12 | 9.00 x 21.00 [229 x 533] |
| NP1612 | \$29.00 | NP1612G | \$29.00 | NP1612PP | \$29.00 | NP1612SS | \$76.00 | 12 x 16 16 x 12 | 13.00 x 9.00 [330 x 229] |
| NP1616 | \$35.50 | NP1616G | \$35.50 | NP1616PP | \$35.50 | NP1616SS | \$93.00 | 16 x 16 | 13.00 x 13.00 [330 x 330] |
| NP2012 | \$33.50 | NP2012G | \$33.50 | — | — | — | — | 12 x 20 20 x 12 | 17.00 x 9.00 [432 x 229] |
| NP2016 | \$42.50 | NP2016G | \$42.50 | NP2016PP | \$42.50 | NP2016SS | \$112.00 | 20 x 16 16 x 20 | 17.00 x 13.00 [432 x 330] |
| NP2020 | \$51.00 | NP2020G | \$51.00 | NP2020PP | \$51.00 | NP2020SS | \$145.00 | 20 x 20 | 17.00 x 17.00 [432 x 432] |
| NP2416 | \$49.00 | NP2416G | \$53.00 | — | — | NP2416SS | \$139.00 | 24 x 16 | 21.00 x 13.00 [533 x 330] |
| NP2420 | \$66.00 | NP2420G | \$66.00 | NP2420PP | \$66.00 | NP2420SS | \$176.00 | 20 x 24 24 x 20 | 21.00 x 17.00 [533 x 432] |
| NP2424 | \$76.00 | NP2424G | \$76.00 | NP2424PP | \$76.00 | NP2424SS | \$205.00 | 24 x 24 | 21.00 x 21.00 [533 x 533] |
| NP3016 | \$66.00 | NP3016G | \$66.00 | — | — | — | — | 30 x 16 | 27.00 x 13.00 [686 x 330] |
| NP3020 | \$79.00 | NP3020G | \$79.00 | — | — | NP3020SS | \$236.00 | 30 x 20 | 27.00 x 17.00 [686 x 432] |
| NP3024 | \$92.00 | NP3024G | \$92.00 | NP3024PP | \$92.00 | NP3024SS | \$248.00 | 24 x 30 30 x 24 | 27.00 x 21.00 [686 x 533] |
| NP3030 | \$129.00 | NP3030G | \$129.00 | NP3030PP | \$129.00 | NP3030SS | \$397.00 | 30 x 30 | 27.00 x 27.00 [686 x 686] |
| NP3624 | \$110.00 | NP3624G | \$110.00 | NP3624PP | \$110.00 | NP3624SS | \$339.00 | 36 x 24 | 33.00 x 21.00 [838 x 533] |
| NP3630 | \$147.00 | NP3630G | \$147.00 | NP3630PP | \$147.00 | NP3630SS | \$389.00 | 30 x 36 36 x 30 | 33.00 x 27.00 [838 x 686] |
| NP3636 | \$172.00 | NP3636G | \$172.00 | NP3636PP | \$172.00 | NP3636SS | \$470.00 | 36 x 36 | 33.00 x 33.00 [838 x 838] |
| NP4024 | \$132.00 | — | — | — | — | — | — | 40 x 24 | 37.00 x 21.00 [940 x 533] |
| NP4224 | \$126.00 | NP4224G | \$126.00 | — | — | — | — | 42 x 24 | 39.00 x 21.00 [991 x 533] |
| NP4230 | \$168.00 | NP4230G | \$168.00 | NP4230PP | \$168.00 | NP4230SS | \$495.00 | 42 x 30 | 39.00 x 27.00 [991 x 686] |
| NP4236 | \$198.00 | NP4236G | \$198.00 | NP4236PP | \$198.00 | NP4236SS | \$593.00 | 42 x 36 | 39.00 x 33.00 [991 x 838] |
| NP4824 | \$143.00 | NP4824G | \$143.00 | — | — | — | — | 48 x 24 | 45.00 x 21.00 [1143 x 533] |
| NP4830 | \$188.00 | NP4830G | \$188.00 | — | — | — | — | 48 x 30 | 45.00 x 27.00 [1143 x 686] |
| NP4836 | \$223.00 | NP4836G | \$223.00 | NP4836PP | \$223.00 | NP4836SS | \$643.00 | 48 x 36 | 45.00 x 33.00 [1143 x 838] |
| NP6030 | \$231.00 | NP6030G | \$250.00 | — | — | — | \$189.00 | 60 x 30 | 57.00 x 27.00 [1448 x 686] |
| NP6036 | \$275.00 | NP6036G | \$275.00 | NP6036PP | \$275.00 | NP6036SS | \$848.00 | 60 x 36 | 57.00 x 33.00 [1448 x 838] |
| NP7230 | \$266.00 | NP7230G | \$288.00 | — | — | — | — | 72 x 30 | 69.00 x 27.00 [1753 x 686] |
| NP7236 | \$326.00 | NP7236G | \$353.00 | — | — | — | — | 72 x 36 | 69.00 x 33.00 [1753 x 838] |

Notes: Dimensions in inches [millimeters].
 Letters in table correspond to letters on dimensional drawing.
 Disconnect enclosures will be up to 2 inches [51mm] wider than width dimensions in this table.

Enclosure Subpanels



Subpanels for Double-door Floor Mount Enclosures

- Subpanels are fabricated from 10 gauge carbon steel
- Painted steel subpanels are painted white polyester powder over phosphatized surfaces
- Galvanized subpanels have a conductive finish (no paint)
- Subpanels are used in NEMA 12 double-door floor mount enclosures and some double-door wall-mount enclosures



| Shipping Schedule | | | | |
|--|------------|------------|-------------|-------------|
| Same day | 1 - 5 days | 1 - 7 days | 1 - 15 days | 1 - 20 days |
| Color indicates shipping lead time in business days. | | | | |

| Subpanels for Double-door Floor Mount Enclosures | | | | | |
|--|----------|----------------------------------|----------|-----------------------------|-----------------------------|
| Painted Steel | Price | Galvanized | Price | Nominal Enclosure Size HxW* | Subpanel Size AxB |
| <u>NPDD4242</u> | \$228.00 | <u>NPDD4242G</u> | \$247.00 | 42 x 42 | 39.00 x 39.00 [991 x 991] |
| <u>NPDD4260</u> | \$334.00 | <u>NPDD4260G</u> | \$334.00 | 42 x 60 | 38.00 x 56.00 [965 x 1422] |
| <u>NPDD4842</u> | \$258.00 | <u>NPDD4842G</u> | \$258.00 | 48 x 42 | 45.00 x 39.00 [1143 x 991] |
| <u>NPDD4848</u> | \$309.00 | <u>NPDD4848G</u> | \$309.00 | 48 x 48 | 44.00 x 44.00 [1118 x 1118] |
| <u>NPDD5442</u> | \$276.00 | <u>NPDD5442G</u> | \$276.00 | 54 x 42 | 50.00 x 38.00 [1270 x 965] |
| <u>NPDD6048</u> | \$375.00 | <u>NPDD6048G</u> | \$375.00 | 60 x 48 | 44.00 x 56.00 [1118 x 1422] |
| <u>NPDD6060</u> | \$463.00 | <u>NPDD6060G</u> | \$463.00 | 60 x 60 | 56.00 x 56.00 [1422 x 1422] |
| <u>NPDD7260</u> | \$552.00 | <u>NPDD7260G</u> | \$552.00 | 72 x 60 | 56.00 x 68.00 [1422 x 1727] |
| <u>NPDD7272</u> | \$658.00 | — | — | 72 x 72 | 68.00 x 68.00 [1727 x 1727] |

Notes: Dimensions in inches [millimeters].
 Letters in table correspond to letters on dimensional drawing.
 *Some floor mount enclosures may be up to 2 inches [51mm] taller than height listed in this table.
 Disconnect enclosures will be up to 2 inches [51 mm] wider than width dimensions listed in this table.

Dimensions

