



# Series 70 - Solenoid Valves

Metal Work Series 70 solenoid valves are an excellent choice for many pneumatic automation applications. They can be used individually or built into a bank with optional manifolds.

## Features

- Single and double solenoid models. Coils purchased separately
- 3-port (3-way), 2-position, 5-port (4-way), 2-position, and 5-port (4-way), 3-position configurations
- 1/8", 1/4", 3/8" and 1/2" NPT



Part No. 7010021100U



Part No. 7030021200U



See [www.AutomationDirect.com](http://www.AutomationDirect.com) for a wide variety of fitting options

Metal Work Series 70 - 1/8" NPT Port Solenoid Valves								
Model	7010020100U	7010020200U	7010020400U	7010021100U	7010021200U	7010022100U	7010022200U	7010022300U
Price	\$76.00	\$50.00	\$48.50	\$56.00	\$75.00	\$86.00	\$86.00	\$86.00
Drawing Link	<a href="#">PDF</a>	<a href="#">PDF</a>	<a href="#">PDF</a>	<a href="#">PDF</a>	<a href="#">PDF</a>	<a href="#">PDF</a>	<a href="#">PDF</a>	<a href="#">PDF</a>
Weight (lb)	0.31	0.24		0.31	0.38			
Manufacturer Specs	<a href="#">PDF</a>	<a href="#">PDF</a>	<a href="#">PDF</a>	<a href="#">PDF</a>	<a href="#">PDF</a>	<a href="#">PDF</a>	<a href="#">PDF</a>	<a href="#">PDF</a>
Valve Type	3-port (3-way), 2-position			5-port (4-way), 2-position		5-port (4-way), 3-position, center closed	5-port (4-way), 3-position, center exhaust	5-port (4-way), 3-position, center pressure
Valve Configuration	N/A	N.C.	N.O.	N/A				
Operator	Solenoid							
Acting	Double solenoid	Single solenoid, spring return			Double solenoid			
Inlet Port Size	1/8" FNPT							
Outlet Port Size	1/8" FNPT							
Flow (Cv)	0.55							
Media	Filtered air without lubrication; lubrication, if used, must be continuous							
Pressure Range	14.5 to 145 psi	36.3 to 145 psi			14.5 to 145 psi	36.3 to 145 psi		
Temperature	14°F to 140°F (-10°C to 60°C)							
Lubrication	ISO and UNI FD 22							
Life Cycle	50 million cycles							
Specifications When Used With Metal Work Coils (Sold Separately)								
Voltage (± 10%)	12; 24 VDC - 24; 110; 220V AC 50/60Hz							
Power Consumption	DC Coils: 2W ; AC Coils: 3.5 VA							
Insulation	Class F							
Actuation Response Time (TRA) / Reset Response Time (TRR) at 87 psi	20/20 ms	15/35 ms			20/20 ms	15/35 ms		
Protection	IP 65 with connector							
Connection	11mm DIN style wiring plug							
Agency Approvals*	Coils have CE mark							

\* To obtain the most current agency approval information, see the Agency Approval Checklist section on the specific part number's web page.

For additional details see manufacturer's technical specifications, manuals and inserts (where applicable).



# Series 70 - Solenoid Valves

Metal Work Series 70 - 1/4" NPT Port Solenoid Valves								
Model	7020020100U	7020020200U	7020020400U	7020021100U	7020021200U	7020022100U	7020022200U	7020022300U
Price	\$78.00	\$58.00	\$55.00	\$62.00	\$79.00	\$99.00	\$99.00	\$99.00
Drawing Link	<a href="#">PDF</a>	<a href="#">PDF</a>	<a href="#">PDF</a>	<a href="#">PDF</a>	<a href="#">PDF</a>	<a href="#">PDF</a>	<a href="#">PDF</a>	<a href="#">PDF</a>
Weight (lb)	0.43	0.35		0.45	0.53	0.58	0.58	0.58
Manufacturer Specs	<a href="#">PDF</a>	<a href="#">PDF</a>	<a href="#">PDF</a>	<a href="#">PDF</a>	<a href="#">PDF</a>	<a href="#">PDF</a>	<a href="#">PDF</a>	<a href="#">PDF</a>
Valve Type	3-port (3-way), 2-position, single solenoid, spring return			5-port (4-way), 2-position		5-port (4-way), 3-position, center closed	5-port (4-way), 3-position, center exhaust	5-port (4-way), 3-position, center pressure
Valve Configuration	N/A	N.C.	N.O.	N/A				
Operator	Solenoid							
Acting	Double solenoid	Signle solenoid, spring return			Double solenoid			
Inlet Port Size	1/4" FNPT							
Outlet Port Size	1/4" FNPT							
Flow (Cv)	1.1							
Media	Filtered air without lubrication; lubrication, if used, must be continuous							
Pressure Range	14.5 to 145 psi	36.3 to 145 psi			14.5 to 145 psi	36.3 to 145 psi		
Temperature	14°F to 140°F (-10°C to 60°C)							
Lubrication	ISO and UNI FD 22							
Life Cycle	50 million cycles							
Specifications When Used With Metal Work Coils (Sold Separately)								
Voltage (± 10%)	12; 24 VDC - 24; 110; 220V AC 50/60Hz							
Power Consumption	DC Coils: 2W ; AC Coils: 3.5 VA							
Insulation	Class F							
Actuation Response Time (TRA) / Reset Response Time (TRR) at 87 psi	21/21 ms	19/45 ms			21/21 ms	19/45 ms		
Protection	IP 65 with connector							
Connection	11mm DIN style wiring plug							
Agency Approvals*	Coils have CE mark							

\* To obtain the most current agency approval information, see the Agency Approval Checklist section on the specific part number's web page.

For additional details see manufacturer's technical specifications, manuals and inserts (where applicable).



# Series 70 - Solenoid Valves

Metal Work Series 70 - 3/8” NPT Port Solenoid Valves								
Model	7040020100U	7040020200U	7040020400U	7040021100U	7040021200U	7040022100U	7040022200U	7040022300U
Price	\$89.00	\$69.00	\$69.00	\$73.00	\$95.00	\$118.00	\$118.00	\$118.00
Drawing Link	<a href="#">PDF</a>	<a href="#">PDF</a>	<a href="#">PDF</a>	<a href="#">PDF</a>	<a href="#">PDF</a>	<a href="#">PDF</a>	<a href="#">PDF</a>	<a href="#">PDF</a>
Weight (lb)	0.69	0.58		0.82	0.89	1.06	1.06	
Manufacturer Specs	<a href="#">PDF</a>	<a href="#">PDF</a>	<a href="#">PDF</a>	<a href="#">PDF</a>	<a href="#">PDF</a>	<a href="#">PDF</a>	<a href="#">PDF</a>	<a href="#">PDF</a>
Valve Type	3-port (3-way), 2-position			5-port (4-way), 2-position		5-port (4-way), 3-position, center closed	5-port (4-way), 3-position, center exhaust	5-port (4-way), 3-position, center pressure
Valve Configuration	N/A	N.C.	N.O.	N/A				
Operator	Solenoid							
Acting	Double solenoid	Signle solenoid, spring return			Double solenoid			
Inlet Port Size	3/8" FNPT							
Outlet Port Size	3/8" FNPT							
Flow (Cv)	2.1							
Media	Filtered air without lubrication; lubrication, if used, must be continuous							
Pressure Range	14.5 to 145 psi	36.3 to 145 psi			14.5 to 145 psi	36.3 to 145 psi		
Temperature	14°F to 140°F (-10°C to 60°C)							
Lubrication	ISO and UNI FD 22							
Life Cycle	50 million cycles							
Specifications When Used With Metal Work Coils (Sold Separately)								
Voltage (± 10%)	12; 24 VDC - 24; 110; 220V AC 50/60Hz							
Power Consumption	DC Coils: 2W ; AC Coils: 3.5 VA							
Insulation	Class F							
Actuation Response Time (TRA) / Reset Response Time (TRR) at 87 psi	18/18 ms	21/72 ms			18/18 ms	21/72 ms		
Protection	IP 65 with connector							
Connection	11mm DIN style wiring plug							
Agency Approvals*	Coils have CE mark							

\* To obtain the most current agency approval information, see the Agency Approval Checklist section on the specific part number's web page.

For additional details see manufacturer's technical specifications, manuals and inserts (where applicable).



# Series 70 - Solenoid Valves

Metal Work Series 70 - 1/2” NPT Port Solenoid Valves								
Model	<a href="#">7030020100U</a>	<a href="#">7030020200U</a>	<a href="#">7030020400U</a>	<a href="#">7030021100U</a>	<a href="#">7030021200U</a>	<a href="#">7030022100U</a>	<a href="#">7030022200U</a>	<a href="#">7030022300U</a>
Price	\$162.00	\$131.00	\$131.00	\$151.00	\$183.00	\$195.00	\$195.00	\$195.00
Drawing Link	<a href="#">PDF</a>	<a href="#">PDF</a>	<a href="#">PDF</a>	<a href="#">PDF</a>	<a href="#">PDF</a>	<a href="#">PDF</a>	<a href="#">PDF</a>	<a href="#">PDF</a>
Weight (lb)	1.64	1.51		1.95	2.02	2.75		
Manufacturer Specs	<a href="#">PDF</a>	<a href="#">PDF</a>	<a href="#">PDF</a>	<a href="#">PDF</a>	<a href="#">PDF</a>	<a href="#">PDF</a>	<a href="#">PDF</a>	<a href="#">PDF</a>
Valve Type	3-port (3-way), 2-position			5-port (4-way), 2-position		5-port (4-way), 3-position, center closed	5-port (4-way), 3-position, center exhaust	5-port (4-way), 3-position, center pressure
Valve Configuration	N/A	N.C.	N.O.	N/A				
Operator	Solenoid							
Acting	Double solenoid	Signle solenoid, spring return			Double solenoid			
Inlet Port Size	1/2” FNPT							
Outlet Port Size	1/2” FNPT							
Flow (Cv)	4.6							
Media	Filtered air without lubrication; lubrication, if used, must be continuous							
Pressure Range	14.5 to 145 psi	36.3 to 145 psi			14.5 to 145 psi	36.3 to 145 psi		
Temperature	14°F to 140°F (-10°C to 60°C)							
Lubrication	ISO and UNI FD 22							
Life Cycle	50 million cycles							
Specifications When Used With Metal Work Coils (Sold Separately)								
Voltage (± 10%)	12; 24 VDC - 24; 110; 220V AC 50/60Hz							
Power Consumption	DC Coils: 2W ; AC Coils: 3.5 VA							
Insulation	Class F							
Actuation Response Time (TRA) / Reset Response Time (TRR) at 87 psi	25/25 ms	36/100 ms			25/25 ms	36/100 ms		
Protection	IP 65 with connector							
Connection	11mm DIN style wiring plug							
Agency Approvals*	Coils have CE mark							

\* To obtain the most current agency approval information, see the Agency Approval Checklist section on the specific part number's web page.

For additional details see manufacturer's technical specifications, manuals and inserts (where applicable).



# Series 70 - Valve Components

Metal Work Series 70 valves is one of the most popular lines of valves produced in Italy by Metal Work. They feature heavy duty construction and many options to choose from.

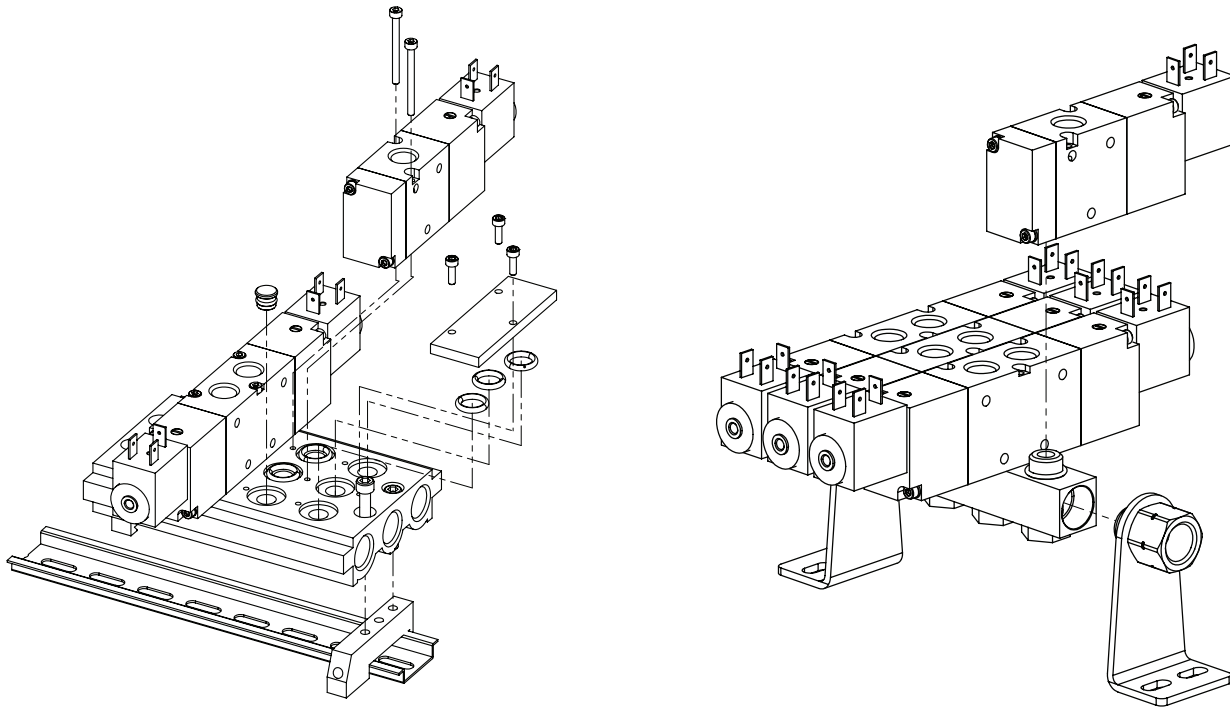
## Features

- Most styles available in four sizes
- 3-port (3-way) and 5-port (4-way) body-ported valves
- 2-position and 3-position operation
- Manual, mechanically operated, air pilot and solenoid valves

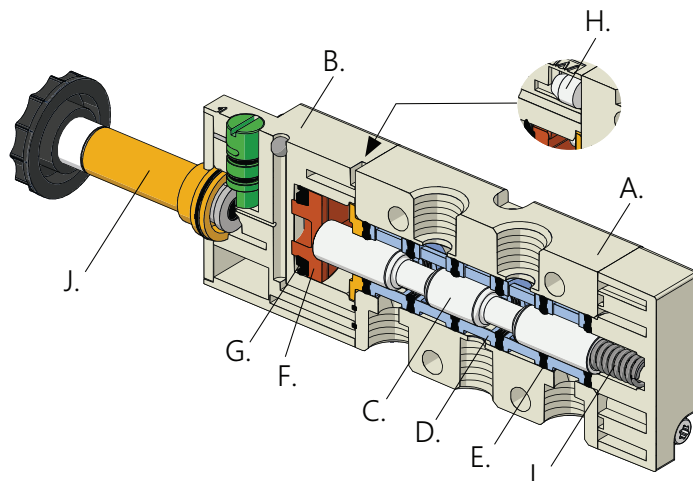


Scan or click the above QR code for the Metal Work Series 70 Instructions Insert

## Valve Base Assembly Examples



- A. VALVE BODY: Aluminum
- B. CONTROL/END CAP: Plastic
- C. SPOOL: chemically Nickel-plated aluminum
- D. SPOOL GUIDES: Plastic
- E. GASKETS: NBR
- F. PISTONS: Hostaform®
- G. PISTON GASKET: NBR
- H. FILTER: Sintered bronze
- I. SPRINGS: Spring steel
- J. OPERATOR: Brass pipe - Stainless steel core





# Series 70 - Compact Valve Manifolds

Metal Work series 70 compact valve manifolds are a space-saving choice when using several Series 70 air pilot or solenoid valves.



Part No. 0221000200U



Part No. 0221000700U

## Features

- 2 to 7-station manifolds
- Fit 1/8" or 1/4" NPT valves
- 3 heights of mounting bracket sold separately
- Work with all Series 70 valves



See [www.AutomationDirect.com](http://www.AutomationDirect.com) for a wide variety of fitting options

## Metal Work Series 70 - Compact Valve Manifolds

Part No.	Description	Drawing Link	Price	Weight (lb)	Manufacturer Specs
<a href="#">0221000200U</a>	Metal Work air compact valve manifold, aluminum, white, 145 psi (10 bar) maximum operating pressure, (2) stations, 1/4in female NPT inlet(s). For use with 1/8in NPT Series 70 valves.	<a href="#">PDF</a>	\$12.00	0.16	<a href="#">PDF</a>
<a href="#">0221000300U</a>	Metal Work air compact valve manifold, aluminum, white, 145 psi (10 bar) maximum operating pressure, (3) stations, 1/4in female NPT inlet(s). For use with 1/8in NPT Series 70 valves.	<a href="#">PDF</a>	\$13.00	0.22	<a href="#">PDF</a>
<a href="#">0221000400U</a>	Metal Work air compact valve manifold, aluminum, white, 145 psi (10 bar) maximum operating pressure, (4) stations, 1/4in female NPT inlet(s). For use with 1/8in NPT Series 70 valves.	<a href="#">PDF</a>	\$16.00	0.29	<a href="#">PDF</a>
<a href="#">0221000500U</a>	Metal Work air compact valve manifold, aluminum, white, 145 psi (10 bar) maximum operating pressure, (5) stations, 1/4in female NPT inlet(s). For use with 1/8in NPT Series 70 valves.	<a href="#">PDF</a>	\$25.00	0.36	<a href="#">PDF</a>
<a href="#">0221000600U</a>	Metal Work air compact valve manifold, aluminum, white, 145 psi (10 bar) maximum operating pressure, (6) stations, 1/4in female NPT inlet(s). For use with 1/8in NPT Series 70 valves.	<a href="#">PDF</a>	\$31.50	0.43	<a href="#">PDF</a>
<a href="#">0221000700U</a>	Metal Work air compact valve manifold, aluminum, white, 145 psi (10 bar) maximum operating pressure, (7) stations, 1/4in female NPT inlet(s). For use with 1/8in NPT Series 70 valves.	<a href="#">PDF</a>	\$39.00	0.5	<a href="#">PDF</a>
<a href="#">0222000200U</a>	Metal Work air compact valve manifold, aluminum, white, 145 psi (10 bar) maximum operating pressure, (2) stations, 3/8in female NPT inlet(s). For use with 1/4in NPT Series 70 valves.	<a href="#">PDF</a>	\$13.00	0.2	<a href="#">PDF</a>
<a href="#">0222000300U</a>	Metal Work air compact valve manifold, aluminum, white, 145 psi (10 bar) maximum operating pressure, (3) stations, 3/8in female NPT inlet(s). For use with 1/4in NPT Series 70 valves.	<a href="#">PDF</a>	\$18.00	0.29	<a href="#">PDF</a>
<a href="#">0222000400U</a>	Metal Work air compact valve manifold, aluminum, white, 145 psi (10 bar) maximum operating pressure, (4) stations, 3/8in female NPT inlet(s). For use with 1/4in NPT Series 70 valves.	<a href="#">PDF</a>	\$21.50	0.38	<a href="#">PDF</a>
<a href="#">0222000500U</a>	Metal Work air compact valve manifold, aluminum, white, 145 psi (10 bar) maximum operating pressure, (5) stations, 3/8in female NPT inlet(s). For use with 1/4in NPT Series 70 valves.	<a href="#">PDF</a>	\$27.00	0.47	<a href="#">PDF</a>
<a href="#">0222000600U</a>	Metal Work air compact valve manifold, aluminum, white, 145 psi (10 bar) maximum operating pressure, (6) stations, 3/8in female NPT inlet(s). For use with 1/4in NPT Series 70 valves.	<a href="#">PDF</a>	\$32.50	0.56	<a href="#">PDF</a>
<a href="#">0222000700U</a>	Metal Work air compact valve manifold, aluminum, white, 145 psi (10 bar) maximum operating pressure, (7) stations, 3/8in female NPT inlet(s). For use with 1/4in NPT Series 70 valves.	<a href="#">PDF</a>	\$31.50	0.66	<a href="#">PDF</a>

For additional details see manufacturer's technical specifications, manuals and inserts (where applicable).



# Series 70 - Compact Valve Manifold Accessories

Metal Work series 70 compact valve manifold accessories; for use on Series 70 air pilot or solenoid valves.



Part No. 0221000191U



Part No. 0222000191U

## Features

- Fit 1/8" or 1/4" NPT valves
- 3 heights of mounting bracket sold separately



See [www.AutomationDirect.com](http://www.AutomationDirect.com) for a wide variety of fitting options

### Metal Work Series 70 - Compact Valve Manifold Accessories

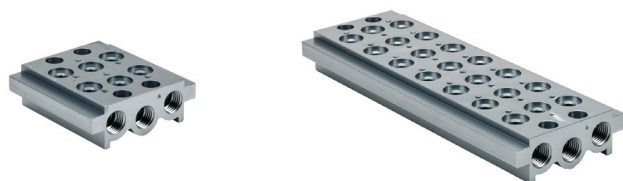
Part No.	Description	Drawing Link	Price	Weight (lb)	Manufacturer Specs
<a href="#"><u>0221000190U</u></a>	Metal Work bracket, 120mm. For use with Series 70 1/8in compact manifolds.	<a href="#"><u>PDF</u></a>	\$15.00	0.68	<a href="#"><u>PDF</u></a>
<a href="#"><u>0221000191U</u></a>	Metal Work bracket, 60mm. For use with Series 70 1/8in compact manifolds.	<a href="#"><u>PDF</u></a>	\$11.50	0.49	<a href="#"><u>PDF</u></a>
<a href="#"><u>0221000192U</u></a>	Metal Work bracket, 30mm. For use with Series 70 1/8in compact manifolds.	<a href="#"><u>PDF</u></a>	\$11.00	0.42	<a href="#"><u>PDF</u></a>
<a href="#"><u>0222000190U</u></a>	Metal Work bracket, 120mm. For use with Series 70 1/4in compact manifolds.	<a href="#"><u>PDF</u></a>	\$12.50	0.75	<a href="#"><u>PDF</u></a>
<a href="#"><u>0222000191U</u></a>	Metal Work bracket, 60mm. For use with Series 70 1/4in compact manifolds.	<a href="#"><u>PDF</u></a>	\$14.50	0.55	<a href="#"><u>PDF</u></a>
<a href="#"><u>0222000192U</u></a>	Metal Work bracket, 30mm. For use with Series 70 1/4in compact manifolds.	<a href="#"><u>PDF</u></a>	\$11.50	0.48	<a href="#"><u>PDF</u></a>

For additional details see manufacturer's technical specifications, manuals and inserts (where applicable).





# Series 70 - Valve Manifolds



Part No. 0223000201U

Part No. 0223000701U



Part No. 0223001001U

Metal Work Series 70 valve manifolds are an excellent choice for installing several Series 70 air pilot or solenoid valves in a pneumatic system.

## Features

- 2 to 10 station manifolds
- Fit 1/8" or 1/4" NPT valves
- 3-port and 5-port valves can be mixed on the same manifold
- Blanking plates for future expansion



See [www.AutomationDirect.com](http://www.AutomationDirect.com) for a wide variety of fitting options

## Metal Work Series 70 - Valve Manifolds

Part No.	Description	Drawing Link	Price	Weight (lb)	Manufacturer Specs
<a href="#">0223000201U</a>	Metal Work air valve manifold, aluminum, silver, 145 psi (10 bar) maximum operating pressure, (2) stations, 1/4in female NPT inlet(s), 1/4in female NPT exhaust(s). For use with 1/8in NPT Series 70 valves.	<a href="#">PDF</a>	\$39.00	0.51	<a href="#">PDF</a>
<a href="#">0223000301U</a>	Metal Work air valve manifold, aluminum, silver, 145 psi (10 bar) maximum operating pressure, (3) stations, 1/4in female NPT inlet(s), 1/4in female NPT exhaust(s). For use with 1/8in NPT Series 70 valves.	<a href="#">PDF</a>	\$47.50	0.71	<a href="#">PDF</a>
<a href="#">0223000401U</a>	Metal Work air valve manifold, aluminum, silver, 145 psi (10 bar) maximum operating pressure, (4) stations, 1/4in female NPT inlet(s), 1/4in female NPT exhaust(s). For use with 1/8in NPT Series 70 valves.	<a href="#">PDF</a>	\$56.00	0.89	<a href="#">PDF</a>
<a href="#">0223000501U</a>	Metal Work air valve manifold, aluminum, silver, 145 psi (10 bar) maximum operating pressure, (5) stations, 1/4in female NPT inlet(s), 1/4in female NPT exhaust(s). For use with 1/8in NPT Series 70 valves.	<a href="#">PDF</a>	\$64.00	1.08	<a href="#">PDF</a>
<a href="#">0223000601U</a>	Metal Work air valve manifold, aluminum, silver, 145 psi (10 bar) maximum operating pressure, (6) stations, 1/4in female NPT inlet(s), 1/4in female NPT exhaust(s). For use with 1/8in NPT Series 70 valves.	<a href="#">PDF</a>	\$77.00	1.35	<a href="#">PDF</a>
<a href="#">0223000701U</a>	Metal Work air valve manifold, aluminum, silver, 145 psi (10 bar) maximum operating pressure, (7) stations, 1/4in female NPT inlet(s), 1/4in female NPT exhaust(s). For use with 1/8in NPT Series 70 valves.	<a href="#">PDF</a>	\$85.00	1.46	<a href="#">PDF</a>
<a href="#">0223000801U</a>	Metal Work air valve manifold, aluminum, silver, 145 psi (10 bar) maximum operating pressure, (8) stations, 1/4in female NPT inlet(s), 1/4in female NPT exhaust(s). For use with 1/8in NPT Series 70 valves.	<a href="#">PDF</a>	\$96.00	1.64	<a href="#">PDF</a>
<a href="#">0223000901U</a>	Metal Work air valve manifold, aluminum, silver, 145 psi (10 bar) maximum operating pressure, (9) stations, 1/4in female NPT inlet(s), 1/4in female NPT exhaust(s). For use with 1/8in NPT Series 70 valves.	<a href="#">PDF</a>	\$104.00	1.83	<a href="#">PDF</a>
<a href="#">0223001001U</a>	Metal Work air valve manifold, aluminum, silver, 145 psi (10 bar) maximum operating pressure, (10) stations, 1/4in female NPT inlet(s), 1/4in female NPT exhaust(s). For use with 1/8in NPT Series 70 valves.	<a href="#">PDF</a>	\$130.00	2.02	<a href="#">PDF</a>
<a href="#">0224000201U</a>	Metal Work air valve manifold, aluminum, silver, 145 psi (10 bar) maximum operating pressure, (2) stations, 3/8in female NPT inlet(s), 3/8in female NPT exhaust(s). For use with 1/4in NPT Series 70 valves.	<a href="#">PDF</a>	\$43.50	0.65	<a href="#">PDF</a>
<a href="#">0224000301U</a>	Metal Work air valve manifold, aluminum, silver, 145 psi (10 bar) maximum operating pressure, (3) stations, 3/8in female NPT inlet(s), 3/8in female NPT exhaust(s). For use with 1/4in NPT Series 70 valves.	<a href="#">PDF</a>	\$53.00	0.88	<a href="#">PDF</a>
<a href="#">0224000401U</a>	Metal Work air valve manifold, aluminum, silver, 145 psi (10 bar) maximum operating pressure, (4) stations, 3/8in female NPT inlet(s), 3/8in female NPT exhaust(s). For use with 1/4in NPT Series 70 valves.	<a href="#">PDF</a>	\$63.00	1.11	<a href="#">PDF</a>
<a href="#">0224000501U</a>	Metal Work air valve manifold, aluminum, silver, 145 psi (10 bar) maximum operating pressure, (5) stations, 3/8in female NPT inlet(s), 3/8in female NPT exhaust(s). For use with 1/4in NPT Series 70 valves.	<a href="#">PDF</a>	\$76.00	1.34	<a href="#">PDF</a>
<a href="#">0224000601U</a>	Metal Work air valve manifold, aluminum, silver, 145 psi (10 bar) maximum operating pressure, (6) stations, 3/8in female NPT inlet(s), 3/8in female NPT exhaust(s). For use with 1/4in NPT Series 70 valves.	<a href="#">PDF</a>	\$86.00	1.57	<a href="#">PDF</a>

For additional details see manufacturer's technical specifications, manuals and inserts (where applicable).





## Series 70 - Valve Manifolds

Metal Work Series 70 - Valve Manifolds					
Part No.	Description	Drawing Link	Price	Weight (lb)	Manufacturer Specs
<a href="#"><u>0224000701U</u></a>	Metal Work air valve manifold, aluminum, silver, 145 psi (10 bar) maximum operating pressure, (7) stations, 3/8in female NPT inlet(s), 3/8in female NPT exhaust(s). For use with 1/4in NPT Series 70 valves.	<a href="#"><u>PDF</u></a>	\$99.00	1.81	<a href="#"><u>PDF</u></a>
<a href="#"><u>0224000801U</u></a>	Metal Work air valve manifold, aluminum, silver, 145 psi (10 bar) maximum operating pressure, (8) stations, 3/8in female NPT inlet(s), 3/8in female NPT exhaust(s). For use with 1/4in NPT Series 70 valves.	<a href="#"><u>PDF</u></a>	\$116.00	2.01	<a href="#"><u>PDF</u></a>
<a href="#"><u>0224000901U</u></a>	Metal Work air valve manifold, aluminum, silver, 145 psi (10 bar) maximum operating pressure, (9) stations, 3/8in female NPT inlet(s), 3/8in female NPT exhaust(s). For use with 1/4in NPT Series 70 valves.	<a href="#"><u>PDF</u></a>	\$141.00	2.27	<a href="#"><u>PDF</u></a>
<a href="#"><u>0224001001U</u></a>	Metal Work air valve manifold, aluminum, silver, 145 psi (10 bar) maximum operating pressure, (10) stations, 3/8in female NPT inlet(s), 3/8in female NPT exhaust(s). For use with 1/4in NPT Series 70 valves.	<a href="#"><u>PDF</u></a>	\$176.00	2.5	<a href="#"><u>PDF</u></a>

For additional details see manufacturer's technical specifications, manuals and inserts (where applicable).



# Series 70 - Valve Manifold Accessories



Part No. 0226004001



Part No. 0226004500



Part No. 0226004600



Part No. 0226004701



See [www.AutomationDirect.com](http://www.AutomationDirect.com) for a wide variety of fitting options



## Metal Work Series 70 - Valve Accessories

Part No.	Description	Drawing Link	Price	Weight (lb)	Manufacturer Specs
<a href="#"><u>0226004001</u></a>	Metal Work manifold port plug, for use with Series 70 1/8in manifolds.	<a href="#"><u>PDF</u></a>	\$1.00	0.01	<a href="#"><u>PDF</u></a>
<a href="#"><u>0226004500</u></a>	Metal Work blanking plate, for use with Series 70 1/8in manifolds. Mounting hardware included.	<a href="#"><u>PDF</u></a>	\$2.50	0.05	<a href="#"><u>PDF</u></a>
<a href="#"><u>0226004600</u></a>	Metal Work DIN rail adapter, for use with Series 70 1/8in manifolds.	<a href="#"><u>PDF</u></a>	\$2.50	0.08	<a href="#"><u>PDF</u></a>
<a href="#"><u>0226004701</u></a>	Metal Work gasket kit, for use with Series 70 1/8in manifolds, includes (3) o-rings and (3) screws.	<a href="#"><u>PDF</u></a>	\$1.50	0.02	<a href="#"><u>PDF</u></a>
<a href="#"><u>0226005001</u></a>	Metal Work manifold port plug, for use with Series 70 1/4in manifolds.	<a href="#"><u>PDF</u></a>	\$1.00	0.02	<a href="#"><u>PDF</u></a>
<a href="#"><u>0226005500</u></a>	Metal Work blanking plate, for use with Series 70 1/4in manifolds. Mounting hardware included.	<a href="#"><u>PDF</u></a>	\$2.75	0.06	<a href="#"><u>PDF</u></a>
<a href="#"><u>0226005600</u></a>	Metal Work DIN rail adapter, for use with Series 70 1/4in manifolds.	<a href="#"><u>PDF</u></a>	\$3.00	0.08	<a href="#"><u>PDF</u></a>
<a href="#"><u>0226005701</u></a>	Metal Work gasket kit, for use with Series 70 1/4in manifolds, includes (3) o-rings and (3) screws.	<a href="#"><u>PDF</u></a>	\$1.50	0.02	<a href="#"><u>PDF</u></a>



# Accessories



Metal Work Syntesi Accessories						
Item Photo	Part No.	Price	Description	Drawing Link	Manufacturer Specs	Weight (lbs)
	<a href="#"><u>88257G4</u></a>	\$11.75	Metal Work solenoid coil, 12 VDC, 2W, 11mm DIN style wiring plug. For use with Metal Work valves.	<a href="#"><u>PDF</u></a>	<a href="#"><u>PDF</u></a>	0.10
	<a href="#"><u>88257G5</u></a>	\$11.75	Metal Work solenoid coil, 24 VDC, 2W, 11mm DIN style wiring plug. For use with Metal Work valves.	<a href="#"><u>PDF</u></a>	<a href="#"><u>PDF</u></a>	0.10
	<a href="#"><u>88257G6</u></a>	\$11.75	Metal Work solenoid coil, 24 VAC, 3.5VA, 11mm DIN style wiring plug. For use with Metal Work valves.	<a href="#"><u>PDF</u></a>	<a href="#"><u>PDF</u></a>	0.10
	<a href="#"><u>88257G7</u></a>	\$11.75	Metal Work solenoid coil, 110 VAC, 3.5VA, 11mm DIN style wiring plug. For use with Metal Work valves.	<a href="#"><u>PDF</u></a>	<a href="#"><u>PDF</u></a>	0.10
	<a href="#"><u>88257G8</u></a>	\$11.75	Metal Work solenoid coil, 240 VAC, 3.5VA, 11mm DIN style wiring plug. For use with Metal Work valves.	<a href="#"><u>PDF</u></a>	<a href="#"><u>PDF</u></a>	0.10
	<a href="#"><u>TAP-ACC21</u></a>	\$11.00	NITRA padlock, replacement, brass. For use with TAP unit.	N/A	N/A	0.5