

Mindman MVHS - Slide Valves

Part No. [10660000044001](#)Part No. [10660000074001](#)

The MVHS series are compact inline hand slide valves designed for simple manual on/off pneumatic control in portable and field applications. Available in four sizes with NPT threading from 1/4" to 3/4", these lightweight valves provide effective orifices for diverse flow requirements. Operating across 7-145 psi pressure range, the intuitive slide mechanism offers quick, single-handed actuation for 3-port, 2-position directional control in a compact, inline-mounted package.

Features

- Compact inline design: Lightweight construction with straight-through flow path enables space-efficient installation directly in pneumatic lines without panel mounting
- Simple slide operation: Intuitive push-pull slide mechanism provides quick, effortless single-handed actuation for on/off control in field or temporary applications
- Scalable flow capacity: Four size options from 1/4" to 3/4" accommodate applications from instrumentation to high-flow industrial requirements
- Wide pressure range: 7-145 psi operating range enables use in both low-pressure instrumentation and standard industrial pneumatic systems

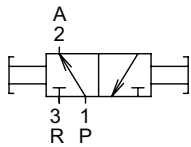


Diagram "A"

MVHS - Slide Valves				
Part No.	10660000044001	10660000054001	10660000064001	10660000074001
Mfg. Part No.	MVHS-8A-NPT	MVHS-10A-NPT	MVHS-15A-NPT	MVHS-20A-NPT
Price	\$11.00	\$12.50	\$20.00	\$28.50
Drawing Link	PDF	PDF	PDF	PDF
Weight (lb)	0.11	0.14	0.33	0.37
Manufacturer Specs	PDF			
Valve Type	2-port (3-way)			
Positions	2			
Pneumatic Diagram	A			
Operator	Hand slide			
Inlet Port Size	1/4" FNPT	3/8" FNPT	1/2" FNPT	3/4" FNPT
Outlet Port Size	1/4" male NPT	3/8" male NPT	1/2" male NPT	3/4" male NPT
Exhaust	Vent hole			
Flow (Cv)	1.69	1.79	3.53	4.74
Media	Filtered air without lubrication; lubrication, if used, must be continuous			
Min. Operating Pressure	7 psi			
Max. Operating Pressure	145 psi			
Temperature	23 to 140 °F (-5 to +60 °C)			
Lubrication	ISO VG32 or equivalent			

For additional details see manufacturer's technical specifications, manuals and inserts (where applicable).