

Mindman MVHC - Rotary Valves

Part No. [10622000034004](#)Part No. [10623000064005](#)

The MVHC series are robust rotary hand lever valves designed for panel-mounted manual pneumatic control with 4-port (4-way) directional operation. Available in three body sizes (200/300/400) with port sizes ranging from 1/8" to 3/4" FNPT, providing a wide range of flow capacity requirements. Operating across 7 to 145 psi pressure range, the rotary design offers three position options: closed center, exhaust center, or 2-position control for precise pneumatic system management.

Features

- Rotary panel mounting: Panel-mounted design provides secure installation with included mounting nut for professional control panel integration
- Three control configurations: Closed center, exhaust center, and 2-position options enable precise application matching for various pneumatic control requirements
- Scalable flow capacity: Three body sizes accommodate port configurations from 1/8" to 3/4" for applications from compact instrumentation to high-flow industrial systems
- Available with side ports

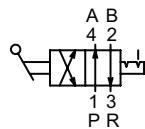


Diagram "A"

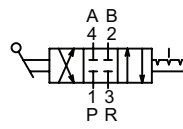


Diagram "B"

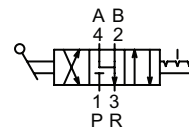


Diagram "C"



See www.AutomationDirect.com for a wide variety of fitting and cable options

MVHC - Rotary Valves						
Part No.	106220200034002	10622000034004	106220100034003	106220200044006	106220000044006	106220100044005
Mfg. Part No.	MVHC-202-4H-6A-M-NPT	MVHC-200-4H-6A-M-NPT	MVHC-201-4H-6A-M-NPT	MVHC-202-4H-8A-M-NPT	MVHC-200-4H-8A-M-NPT	MVHC-201-4H-8A-M-NPT
Price	\$33.00	\$33.00	\$33.00	\$33.00	\$33.00	\$33.00
Drawing Link	PDF	PDF	PDF	PDF	PDF	PDF
Weight (lb)	0.79	0.78	0.78	0.77	0.77	0.77
Manufacturer Specs	PDF					
Valve Type	4-port (4-way)					
Positions	2	3		2	3	
Pneumatic Diagram	A	B	C	A	B	C
Valve Configuration	N/A	Center closed	Center exhaust	N/A	Center closed	Center exhaust
Operator	Rotary lever					
Acting	Detented					
Inlet Port Size	1/8" FNPT			1/4" FNPT		
Outlet Port Size	(2) 1/8" FNPT			(2) 1/4" FNPT		
Exhaust	1/8" FNPT			1/4" FNPT		
Flow (Cv)	0.39			0.39		
Media	Filtered air without lubrication; lubrication, if used, must be continuous					
Min. Operating Pressure	7 psi					
Max. Operating Pressure	145 psi					
Temperature	23 to 140 °F (-5 to +60 °C)					
Lubrication	ISO VG32 or equivalent					

For additional details see manufacturer's technical specifications, manuals and inserts (where applicable).

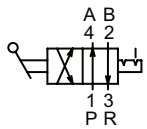

Mindman MVHC - Rotary Valves


Diagram "A"

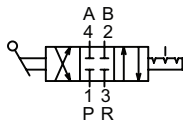


Diagram "B"

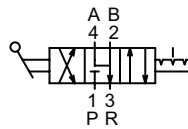


Diagram "C"

MVHC - Rotary Valves						
Part No.	106230200054005	106230000054006	106230200064002	106230000064005	106240200074002	106240000074005
Mfg. Part No.	MVHC-302-4H-10A-M-NPT	MVHC-300-4H-10A-M-NPT	MVHC-302-4H-15A-M-NPT	MVHC-300-4H-15A-M-NPT	MVHC-402-4H-20A-M-NPT	MVHC-400-4H-20A-M-NPT
Price	\$40.00	\$40.00	\$40.00	\$40.00	\$52.00	\$52.00
Drawing Link	PDF	PDF	PDF	PDF	PDF	PDF
Weight (lb)	1.33	1.32	1.29	1.29	2.58	2.57
Manufacturer Specs	PDF					
Valve Type	4-port (4-way)					
Positions	2	3	2	3	2	3
Pneumatic Diagram	A	B	A	B	A	B
Valve Configuration	N/A	Center closed	N/A	Center closed	N/A	Center closed
Operator	Rotary lever					
Acting	Detented					
Inlet Port Size	3/8" FNPT		1/2" FNPT		3/4" FNPT	
Outlet Port Size	(2) 3/8" FNPT		(2) 1/2" FNPT		(2) 3/4" FNPT	
Exhaust	3/8" FNPT		1/2" FNPT		3/4" FNPT	
Flow (Cv)	1.61		1.83		3.94	
Media	Filtered air without lubrication; lubrication, if used, must be continuous					
Min. Operating Pressure	7 psi					
Max. Operating Pressure	145 psi					
Temperature	23 to 140 °F (-5 to +60 °C)					
Lubrication	ISO VG32 or equivalent					

For additional details see manufacturer's technical specifications, manuals and inserts (where applicable).