



MVHB - Hand Lever Valves and Manifolds

The MVHB series are manually operated hand lever valves designed for reliable pneumatic control without electrical power requirements. Available in three size ranges 1/4", 3/8", and 1/2" ports, these valves provide for diverse flow applications. All models feature 5-port, 4-way configurations with spring return and detent options, plus specialized center position variants (closed/pressure/exhaust) for enhanced control flexibility, with the MVHB-300 and MVHB-500 also available in vertical mounting configurations.



Part No. **106122017044003**

Features

- Manual operation: Hand lever actuation eliminates electrical power requirements, ideal for emergency shutoff, remote locations, or applications requiring manual override control
- Versatile mounting options: MVHB-220 can be panel-mounted (M); MVHB-300/500 offered in both standard and vertical (V) configurations for flexible installation requirements
- Vertical models can be mounted on available manifolds for 2 or 4 position assemblies
- Spring return and detent operation: Choose between automatic spring return for momentary control or detent position for sustained operation without holding the lever
- Center position control: Specialized variants (closed/pressure/exhaust center) provide precise three-position control for applications requiring neutral state functionality or system pressurization

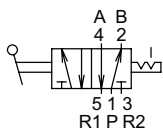


Diagram "A"

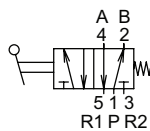


Diagram "B"

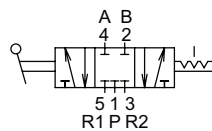


Diagram "C"

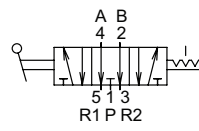


Diagram "D"

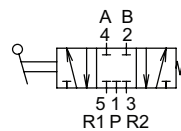


Diagram "E"

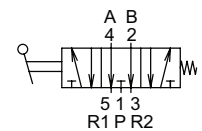


Diagram "F"

MVHB - Hand Lever Valves								
Part No.	106122015044005	106122015144004	106122017044003	106122017144004	106122019044002	106122019144003	106130015054002	106130015154002
Mfg. Part No.	MVHB-220-4TV-M-NPT	MVHB-220-4TV-SP-M-NPT	MVHB-220-4TV-C-M-NPT	MVHB-220-4TV-SP-M-NPT	MVHB-220-4TV-R-M-NPT	MVHB-220-4TV-SP-M-NPT	MVHB-300-4TV-NPT	MVHB-300-4TV-SP-NPT
Price	\$39.00	\$42.00	\$42.00	\$51.00	\$42.00	\$51.00	\$55.00	\$55.00
Drawing Link	PDF	PDF	PDF	PDF	PDF	PDF	PDF	PDF
Weight (lb)	0.45	0.45	0.52	0.57	0.51	0.57	1.01	1.01
Manufacturer Specs	PDF						PDF	
Valve Type	5-port (4-way)							
Positions	2		3				2	
Pneumatic Diagram	A	B	C	E	D	F	A	B
Valve Configuration	N/A		Center closed		Center exhaust		N/A	
Operator	90 deg hand lever							
Acting	Detented	Spring return	Detented	Spring return to center from right or left	Detented	Spring return to center from right or left	Detented	Spring return
Inlet Port Size	1/4" FNPT						3/8" FNPT	
Outlet Port Size	(2) 1/4" FNPT						(2) 3/8" FNPT	
Exhaust	(2) 1/8" FNPT						(2) 3/8" FNPT	
Flow (Cv)	1		0.89				1.89	
Media	Filtered air without lubrication; lubrication, if used, must be continuous							
Min. Operating Pressure	0 psi							
Max. Operating Pressure	116 psi						174 psi	
Temperature	23 to 140 °F (-5 to +60 °C)							
Lubrication	ISO VG32 or equivalent							

For additional details see manufacturer's technical specifications, manuals and inserts (where applicable).



MVHB - Hand Lever Valves and Manifolds



Part No. **106130019054001**



Part No. **106130017154003**



See www.AutomationDirect.com for a wide variety of fitting and cable options

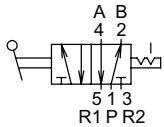


Diagram "A"

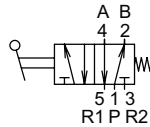


Diagram "B"

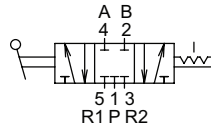


Diagram "C"

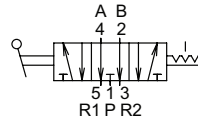


Diagram "D"

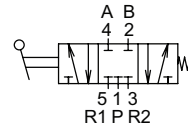


Diagram "E"

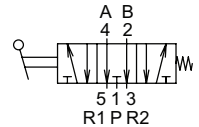


Diagram "F"

MVHB - Hand Lever Valves								
Part No.	106130017054002	106130017154002	106130019054001	106130019154003	106130015254001	106130015454001	106130017054003	106130017154003
Mfg. Part No.	MVHB-300-4TVC-NPT	MVHB-300-4TVC-SP-NPT	MVHB-300-4TVR-NPT	MVHB-300-4TVR-SP-NPT	MVHB-300V-4TV-NPT	MVHB-300V-4TV-SP-NPT	MVHB-300V-4TVC-NPT	MVHB-300V-4TVC-SP-NPT
Price	\$61.00	\$66.00	\$61.00	\$66.00	\$55.00	\$55.00	\$61.00	\$66.00
Drawing Link	PDF	PDF	PDF	PDF	PDF	PDF	PDF	PDF
Weight (lb)	1.09	1.23	1.08	1.23	1.01	1.01	1.09	1.24
Manufacturer Specs	PDF							
Valve Type	5-port (4-way)							
Positions	3				2		3	
Pneumatic Diagram	C	E	D	F	A	B	C	E
Valve Configuration	Center closed		Center exhaust		N/A		Center closed	
Operator	90 deg hand lever				Vertical hand lever			
Acting	Detented	Spring return to center from right or left	Detented	Spring return to center from right or left	Detented	Spring return	Detented	Spring return to center from right or left
Inlet Port Size	3/8" FNPT							
Outlet Port Size	(2) 3/8" FNPT							
Exhaust	(2) 3/8" FNPT							
Flow (Cv)	1.89							
Media	Filtered air without lubrication; lubrication, if used, must be continuous							
Min. Operating Pressure	0 psi							
Max. Operating Pressure	174 psi							
Temperature	23 to 140 °F (-5 to +60 °C)							
Lubrication	ISO VG32 or equivalent							

For additional details see manufacturer's technical specifications, manuals and inserts (where applicable).



MVHB - Hand Lever Valves and Manifolds

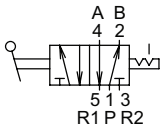


Diagram "A"

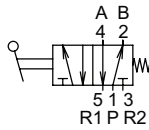


Diagram "B"

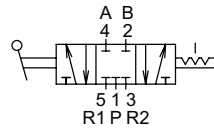


Diagram "C"

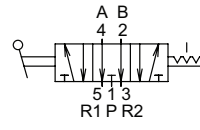


Diagram "D"

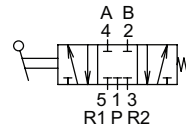


Diagram "E"

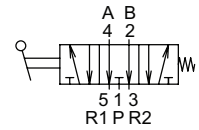


Diagram "F"

MVHB - Hand Lever Valves

Part No.	106130019154004		106130019154005		106150015064003		106150015164002		106150017064002		106150017164008		106150019064001		106150019164002	
Mfg. Part No.	MVHB-300V-4TVR-NPT		MVHB-300V-4TVR-SP-NPT		MVHB-500-4TV-NPT		MVHB-500-4TV-SP-NPT		MVHB-500-4TVC-NPT		MVHB-500-4TVC-SP-NPT		MVHB-500-4TVR-NPT		MVHB-500-4TVR-SP-NPT	
Price	\$61.00		\$66.00		\$63.00		\$63.00		\$68.00		\$69.00		\$68.00		\$69.00	
Drawing Link	PDF		PDF		PDF		PDF		PDF		PDF		PDF		PDF	
Weight (lb)	1.08		1.23		1.11		1.11		1.11		1.27		1.11		1.26	
Manufacturer Specs	PDF				PDF											
Valve Type	5-port (4-way)															
Positions	3				2				3							
Pneumatic Diagram	D		F		A		B		C		E		D		F	
Valve Configuration	Center exhaust				N/A				Center closed				Center exhaust			
Operator	Vertical hand lever				90 deg hand lever								90 deg hand lever			
Acting	Detented		Spring return to center from right or left		Detented		Spring return		Detented		Spring return to center from right or left		Detented		Spring return to center from right or left	
Inlet Port Size	3/8" FNPT				1/2" FNPT											
Outlet Port Size	(2) 3/8" FNPT				(2) 1/2" FNPT											
Exhaust	(2) 3/8" FNPT				(2) 1/2" FNPT											
Flow (Cv)	1.89				2.28											
Media	Filtered air without lubrication; lubrication, if used, must be continuous															
Min. Operating Pressure	0 psi															
Max. Operating Pressure	174 psi															
Temperature	23 to 140 °F (-5 to +60 °C)															
Lubrication	ISO VG32 or equivalent															

For additional details see manufacturer's technical specifications, manuals and inserts (where applicable).



MVHB - Hand Lever Valves and Manifolds

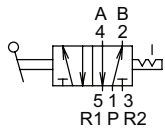


Diagram "A"

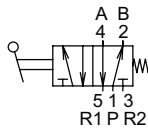


Diagram "B"

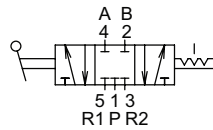


Diagram "C"

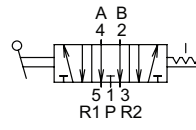


Diagram "D"

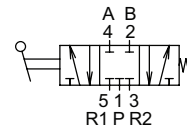


Diagram "E"

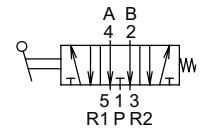


Diagram "F"

MVHB - Hand Lever Valves						
Part No.	106150015064004		106150015164003		106150017164009	
Mfg. Part No.	MVHB-500V-4TV-NPT		MVHB-500V-4TV-SP-NPT		MVHB-500V-4TVC-NPT	
Price	\$63.00		\$63.00		\$68.00	
Drawing Link	PDF		PDF		PDF	
Weight (lb)	1.11		1.11		1.27	
Manufacturer Specs	PDF					
Valve Type	5-port (4-way)					
Positions	2			3		
Pneumatic Diagram	A		B		C	
Valve Configuration	N/A		Center closed		Center exhaust	
Operator	Vertical hand lever					
Acting	Detented		Spring return		Spring return to center from right or left	
Inlet Port Size	1/2" FNPT					
Outlet Port Size	(2) 1/2" FNPT					
Exhaust	(2) 1/2" FNPT					
Flow (Cv)	2.28					
Media	Filtered air without lubrication; lubrication, if used, must be continuous					
Min. Operating Pressure	0 psi					
Max. Operating Pressure	174 psi					
Temperature	23 to 140 °F (-5 to +60 °C)					
Lubrication	ISO VG32 or equivalent					

For additional details see manufacturer's technical specifications, manuals and inserts (where applicable).



MVHB - Hand Lever Valve Manifolds and Accessories

MVSE manifolds fit MVHB vertical lever manual valves. Available in 2 or 4 stations.



Part No. [100430093024001](#)



Part No. [100430093000001](#)



Assembly example shown.



See www.AutomationDirect.com for a wide variety of fitting and cable options

MVHB - Hand Lever Valve Manifolds								
Part No.	Mfg. Part No.	Number of Stations	Inlet Port Size	Exhaust Port Size	Manufacturer Technical Specifications	Drawing Link	Price	Weight (lb)
100430093024001	MVSE-300-5B2-NPT	2	(2) 3/8" FNPT	(4) 3/8" FNPT	PDF	PDF	\$18.00	0.51
100430093044001	MVSE-300-5B4-NPT	4				PDF	\$29.00	0.89
100450093024001	MVSE-500-5B2-NPT	2	(2) 1/2" FNPT	(4) 1/2" FNPT	PDF	PDF	\$27.00	0.84
100450093044001	MVSE-500-5B4-NPT	4				PDF	\$44.00	1.50

MVHB - Hand Lever Manifold Accessories						
Part No.	Mfg. Part No.	Description	Manufacturer Technical Specifications	Drawing Link	Price	Weight (lb)
100430093000001	MVSE-300-5P	Mindman blanking plate, plated steel. For use with MVSE-300-5 series manifolds. Mounting screws included.	PDF	PDF	\$3.00	0.09
100246093000004	MVSC-460-5P	Mindman blanking plate, plated steel. For use with MVSC-460-5 and MVSE-500-5 series manifolds. Mounting screws included.	PDF	PDF	\$2.00	0.19

For additional details see manufacturer's technical specifications, manuals and inserts (where applicable).