



MVHA - Miniature Square Valves

The MVHA-31 and MVHA-41 series are compact, manually operated hand valves designed for space-efficient pneumatic control with NPT threading. The 3-way MVHA-31 series provides directional control for single-acting cylinders, while the 4-way MVHA-41 series offers full double-acting cylinder control with separate exhaust ports. Both series operate across 0-130 psi and feature multiple actuation options: V-toggle for 80° lever operation, single push button (P), and double push button (PP - MVHA-41 only) for independent positive control of both valve positions.



Part No. [106031103034001](#)



Part No. [106041005034001](#)



Part No. [106041205034001](#)

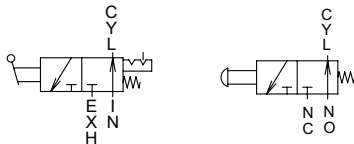


Diagram "A"

Diagram "B"

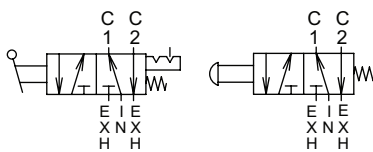


Diagram "D"

Diagram "E"

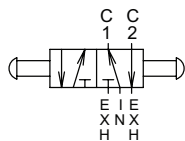


Diagram "F"



See www.AutomationDirect.com for a wide variety of fitting and cable options

Features

- Compact panel-mounted design: Push button models (31P/41P/41PP) feature M12×0.8 threading for secure panel installation, with 41PP offering dual M12×0.8 threads for side-by-side mounting flexibility
- Multiple actuation styles: V-toggle provides tactile 80° lever control with clear position indication; P-type single push button offers momentary vertical actuation; PP double push button enables independent extend/retract control
- Enhanced flow capacity: MVHA-31 for single-acting applications; MVHA-41 for faster double-acting cylinder speeds and higher flow requirements
- Separate exhaust ports: MVHA-41 series features independent exhaust ports for individual A and B side venting, enabling silencer installation or exhaust flow control for speed regulation
- (2) M5x0.8 slotted plugs are provided with the MVHA-41 valves. These can serve as simple flow controls on the exhaust

MVHA - Miniature Square Valves					
Part No.	106031103034001	106031103034001	106041005034001	106041005034002	106041205034001
Mfg. Part No.	MVHA-31V-NPT	MVHA-31P-NPT	MVHA-41V-NPT	MVHA-41P-NPT	MVHA-41PP-NPT
Price	\$36.00	\$34.00	\$41.00	\$41.00	\$48.00
Drawing Link	PDF	PDF	PDF	PDF	PDF
Weight (lb)	0.14	0.13	0.17	0.16	0.18
Manufacturer Specs	PDF		PDF		
Valve Type	3-port (3-way)		5-port (4-way)		
Positions	2				
Pneumatic Diagram	A	B	C	D	E
Valve Configuration	N/A	N.O./N.C.	N/A	N/A	N/A
Operator	Toggle style actuator	Pushbutton	Toggle style actuator	Pushbutton	Double pushbutton
Acting	Detented	Spring return	Detented	Spring return	N/A
Inlet Port Size	1/8" FNPT				
Outlet Port Size	1/8" FNPT		(2) 1/8" FNPT		
Exhaust	1/8" FNPT		(2) M5 x 0.8 female ISO		
Flow (Cv)	0.25		0.31		
Media	Filtered air without lubrication; lubrication, if used, must be continuous				
Min. Operating Pressure	0 psi				
Max. Operating Pressure	130 psi				
Temperature	23 to 140 °F (-5 to +60 °C)				
Lubrication	ISO VG32 or equivalent				

For additional details see manufacturer's technical specifications, manuals and inserts (where applicable).