



MVHA - Miniature Round Valves

The MVHA series are ultra-lightweight, miniature hand-operated valves designed for space-critical pneumatic control applications. Available in 2-way (MVHA-2), 3-way (MVHA-3), and 4-way/5-port (MVHA-4) configurations, these compact valves operate across 0-130 psi with effective orifices for precise low-flow control. All series offer V-toggle for 80° lever operation or P-type push button for panel mounting via M12×0.8 threading, with the MVHA-4 additionally featuring a PP double push button option for independent positive control of both valve positions.



Part No. [106002101021007](#)



Part No. [106004005021007](#)



Part No. [106004205021001](#)

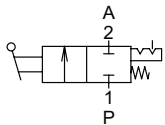


Diagram "A"

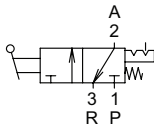


Diagram "B"

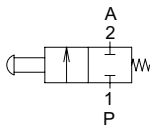


Diagram "C"

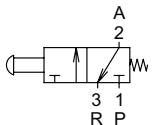


Diagram "D"

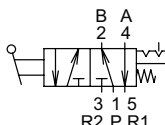


Diagram "E"

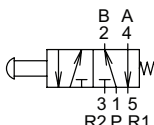


Diagram "F"

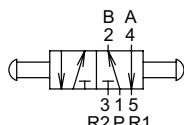


Diagram "G"

Features

- Ultra-lightweight design: Minimal weight with M5×0.8 ports, ideal for portable equipment, medical devices, and densely packed control panels
- Versatile port configurations: 2-way for simple on/off control, 3-way for single-acting directional control, or 4-way/5-port for complete double-acting cylinder control
- Multiple actuation options: V-toggle provides tactile 80° lever control; P-type offers compact push button operation; PP double push button (4-way only) enables independent control of extend/retract positions
- Compact panel mounting: Push button models feature M12×0.8 threading for secure installation with minimal panel space requirements, perfect for operator interfaces and control stations

MVHA - Miniature Round Valves							
Part No.	106002001021004	106002101021007	106003003021013	106003103021013	106004005021007	106004105021008	106004205021001
Mfg. Part No.	MVHA-2V	MVHA-2P	MVHA-3V	MVHA-3P	MVHA-4V	MVHA-4P	MVHA-4PP
Price	\$28.00	\$27.00	\$28.00	\$27.00	\$28.00	\$26.00	\$28.00
Drawing Link	PDF	PDF	PDF	PDF	PDF	PDF	PDF
Weight (lb)	0.09	0.09	0.09	0.09	0.16	0.16	0.18
Manufacturer Specs	PDF				PDF		
Valve Type	2-port (2-way)		2-port (3-way)		5-port (4-way)		
Positions	2						
Pneumatic Diagram	A	C	B	D	E	F	G
Valve Configuration	N/A	N.C.	N/A	N.C.	N/A	N/A	N/A
Operator	Toggle style actuator	Pushbutton	Toggle style actuator	Pushbutton	Toggle style actuator	Pushbutton	Double pushbutton
Acting	Detented	Spring return	Detented	Spring return	Detented	Spring return	N/A
Inlet Port Size	R1/8 male BSPT				M5 x 0.8 female ISO		
Outlet Port Size	M5 x 0.8 female ISO				(2) M5 x 0.8 female ISO		
Exhaust	N/A		Vent hole				
Flow (Cv)	0.1				0.11		
Media	Filtered air without lubrication; lubrication, if used, must be continuous						
Min. Operating Pressure	0 psi						
Max. Operating Pressure	130 psi						
Temperature	23 to 140°F (-5 to +60°C)						
Lubrication	ISO VG32 or equivalent						

For additional details see manufacturer's technical specifications, manuals and inserts (where applicable).