

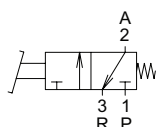
Part No. [107023003044001](#)Part No. [107024000444002](#)

Diagram "A"

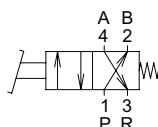


Diagram "B"

The MVFA series are industrial foot pedal valves designed for hands-free pneumatic control in manufacturing and assembly operations. Available in 3-way normally closed (MVFA-230) and 4-way (MVFA-240) configurations with 1/4" FNPT ports and 8 mm<sup>2</sup> effective orifice, these valves operate across 29-102 psi pressure range for reliable hands-free actuation. Optional features include protective cover for heavy-duty environments and locking mechanism for sustained operation without continuous foot pressure.

## Features

- Hands-free operation: Foot pedal actuation enables operators to keep both hands free for assembly, material handling, or equipment operation tasks
- Protective guard option: Optional metal guard cover (P suffix) prevents accidental actuation from dropped objects or inadvertent contact, critical for safety in busy work areas
- Mechanical lock feature: Lock option (L suffix) maintains the pedal in actuated position for sustained air flow without continuous foot pressure, ideal for extended operation cycles
- Robust industrial design: Heavy-duty construction with optional protection ensures reliable performance in demanding factory floor environments



See [www.AutomationDirect.com](http://www.AutomationDirect.com) for a wide variety of fitting and cable options

| MVFA - Foot Valves      |  |                    |                                 |                    |                                 |                    |                                 |                    |
|-------------------------|--|--------------------|---------------------------------|--------------------|---------------------------------|--------------------|---------------------------------|--------------------|
| Part No.                | <a href="#">107023003044001</a>  |                    | <a href="#">107023003444001</a> |                    | <a href="#">107023003044101</a> |                    | <a href="#">107023003444101</a> |                    |
| Mfg. Part No.           | MVFA-230-8A-NPT  |                    | MVFA-230-8A-L-NPT               |                    | MVFA-230-8A-P-NPT               |                    | MVFA-240-8A-NPT                 |                    |
| Price                   | \$36.50  |                    | \$40.00                         |                    | \$54.00                         |                    | \$59.00                         |                    |
| Drawing Link            | PDF  |                    | PDF                             |                    | PDF                             |                    | PDF                             |                    |
| Weight (lb)             | 1.66   |                    | 1.71                            |                    | 3.35                            |                    | 3.40                            |                    |
| Manufacturer Specs      | PDF  |                    |                                 |                    |                                 |                    |                                 |                    |
| Valve Type              | 3-port (3-way)   |                    |                                 |                    | 4-port (4-way)                  |                    |                                 |                    |
| Positions               | 2  |                    |                                 |                    |                                 |                    |                                 |                    |
| Pneumatic Diagram       | A  |                    |                                 |                    | B                               |                    |                                 |                    |
| Valve Configuration     | N.C.   |                    |                                 |                    | N/A                             |                    |                                 |                    |
| Operator                | Non-locking foot pedal   | Locking foot pedal | Non-locking foot pedal          | Locking foot pedal | Non-locking foot pedal          | Locking foot pedal | Non-locking foot pedal          | Locking foot pedal |
| Foot Guard              | None   |                    | Yellow steel                    |                    | None                            |                    | Yellow steel                    |                    |
| Acting                  | Spring return  |                    |                                 |                    |                                 |                    |                                 |                    |
| Inlet Port Size         | 1/4" FNPT  |                    |                                 |                    |                                 |                    |                                 |                    |
| Outlet Port Size        | 1/4" FNPT  |                    |                                 |                    |                                 |                    |                                 |                    |
| Exhaust                 | 1/4" FNPT  |                    |                                 |                    | (2) 1/4" FNPT                   |                    |                                 |                    |
| Flow (Cv)               | 0.44   |                    |                                 |                    |                                 |                    |                                 |                    |
| Media                   | Filtered air without lubrication; lubrication, if used, must be continuous |                    |                                 |                    |                                 |                    |                                 |                    |
| Min. Operating Pressure | 29 psi   |                    |                                 |                    |                                 |                    |                                 |                    |
| Max. Operating Pressure | 102 psi  |                    |                                 |                    |                                 |                    |                                 |                    |
| Temperature             | 23 to 140 °F (-5 to +60 °C)  |                    |                                 |                    |                                 |                    |                                 |                    |
| Lubrication             | ISO VG32 or equivalent   |                    |                                 |                    |                                 |                    |                                 |                    |

For additional details see manufacturer's technical specifications, manuals and inserts (where applicable).