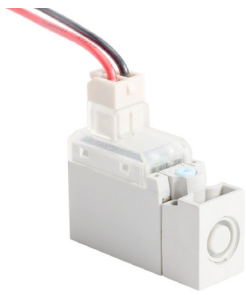
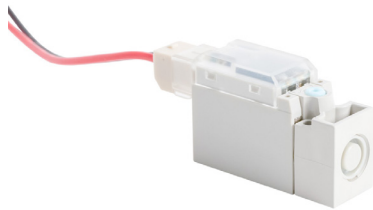




# MVDY - 10mm Miniature Solenoid Valves



Part No. [103310053340009](#)



Part No. [103310053350003](#)

The MVDY-100 series are ultra-compact direct acting solenoid valves designed for applications requiring extremely fast response times and minimal space. These 3-way, single solenoid valves feature M5×0.8 ports with an effective orifice for precise low-flow control. With exceptional 4ms DC response time and operating pressure up to 102 psi, these valves are ideal for instrumentation, medical equipment, and compact automation systems. Available with RMH-type plug connectors in side-mounted or top-mounted configurations for flexible installation in space-constrained applications.

## Features

- Ultra-compact design: With minimal weight and miniature M5×0.8 ports, these valves enable dense valve manifold configurations and integration into space-critical applications
- Exceptional response speed: 4 ms DC response time with 5 Hz maximum operating frequency provides precise, rapid control for high-speed automation and instrumentation
- Manifold capability: Supports up to 8-station manifold assemblies with 10.5mm station spacing for compact multi-valve control systems
- Low power consumption: Standard 1.2W DC operation reduces heat generation and energy costs in multi-valve installations
- Vacuum compatible: R port rated for -26 to 0 in-Hg enables vacuum switching applications in pick-and-place, material handling, and laboratory automation (NOTE: Valve is N.O. in this configuration)

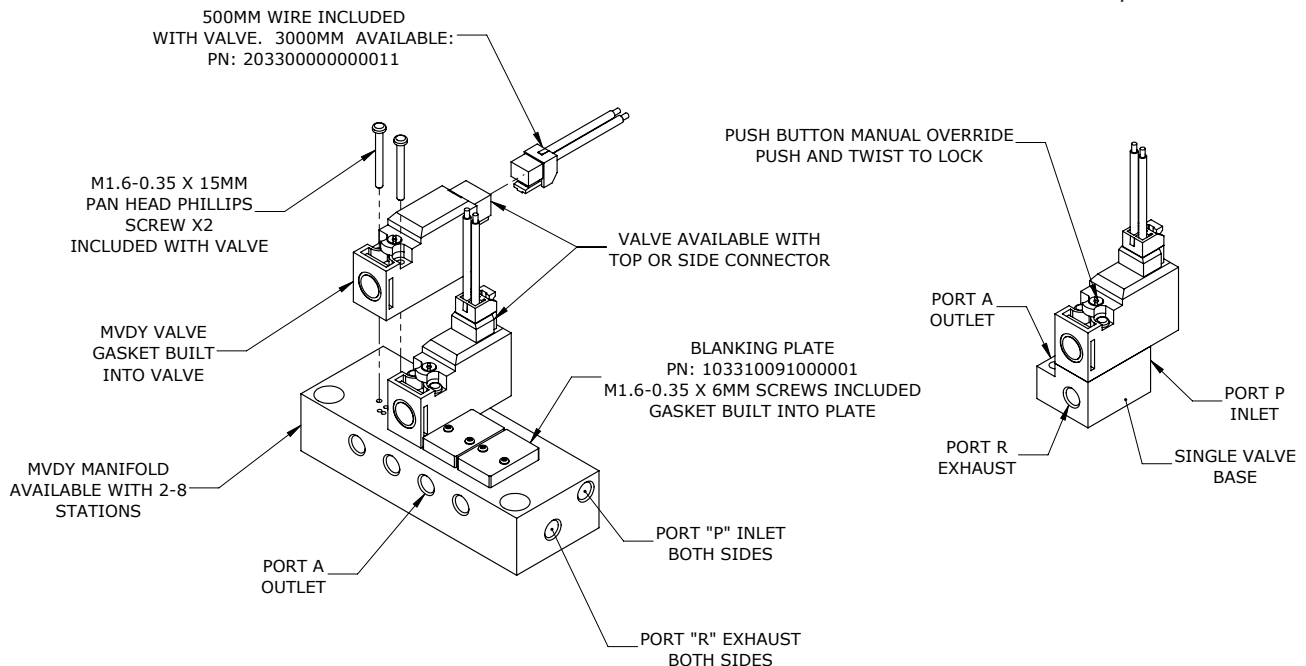
## Mounting Methods:

- Direct Base Mounting: Valve mounts to individual 3-port base
- Manifold Mounting: Multiple valves mount side-by-side on manifold with 10.5mm pitch, creating compact multi-station control
- Blocking plates available to cap unused manifold stations

Click or scan the QR code for assembly instructions.



See [www.AutomationDirect.com](http://www.AutomationDirect.com) for a wide variety of fitting and cable options



WIRING INFORMATION:  
CONNECTOR IS JAM RMH STYLE 2-PIN



# MVDY - 10mm Miniature Solenoid Valves

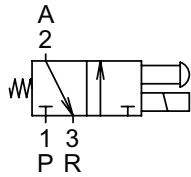


Diagram "A"

MVDC - Stackable Solenoid Valves				
<b>Part No.</b>	<a href="#">103310053340009</a>	<a href="#">103310053350003</a>	<a href="#">103310053240004</a>	<a href="#">103310053250001</a>
<b>Mfg. Part No.</b>	MVDY-100-3E1-DC24-LR	MVDY-100-3E1-DC24-SR	MVDY-100-3E1-DC12-LR	MVDY-100-3E1-DC12-SR
<b>Price</b>	\$32.00	\$32.00	\$33.00	\$33.00
<b>Drawing Link</b>	<a href="#">PDF</a>	<a href="#">PDF</a>	<a href="#">PDF</a>	<a href="#">PDF</a>
<b>Weight (lb)</b>	0.06	0.06	0.06	0.06
<b>Manufacturer Specs</b>	<a href="#">PDF</a>			
<b>Valve Type</b>	3-way			
<b>Positions</b>	2			
<b>Pneumatic Diagram</b>	A			
<b>Operating Voltage</b>	24 VDC		12 VDC	
<b>Power Rating</b>	1.2W			
<b>Electrical Connection</b>	JAM RMH side plug	JAM RMH top plug	JAM RMH side plug	JAM RMH top plug
<b>Valve Configuration</b>	N.C.			
<b>Acting</b>	Single solenoid spring return			
<b>Inlet Port Size</b>	N/A - requires manifold			
<b>Outlet Port Size</b>	N/A - requires manifold			
<b>Exhaust</b>	N/A - requires manifold			
<b>Flow (Cv)</b>	0.02			
<b>Media</b>	Filtered air without lubrication; lubrication, if used, must be continuous			
<b>Min. Operating Pressure</b>	0 psi			
<b>Max. Operating Pressure</b>	102 psi			
<b>Vacuum Use</b>	When using for vacuum, feed vacuum to "R" port "P" port rated for 0-87 psi. "R" port is rated for -26.5 in Hg. Valve is N.O. in this configuration			
<b>Temperature</b>	23 to 122 °F (-5 to 50 °C)			
<b>Lubrication</b>	ISO VG32 or equivalent			

For additional details see manufacturer's technical specifications, manuals and inserts (where applicable).



# MVDY - 10mm Miniature Solenoid Valve Manifolds and Accessories

The MVDY manifolds and accessories are designed to work specifically with the MVDY miniature solenoid valves. They are made of aluminum and have a maximum operating pressure of 145 psi.



Part No. [103310081010001](#)

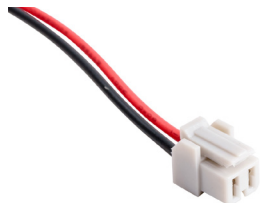


Part No. [103310092041005](#)

10mm Miniature Solenoid Valve Manifolds and Accessories									
Part No.	Mfg. Part No.	Number of Stations	Inlet Port Size	Outlet Port Size	Exhaust Port Size	Manufacturer Technical Specifications	Drawing Link	Price	Weight (lb)
<a href="#">103310081010001</a>	MVDY-100-3B1	1	M5 x 0.8 female ISO	M5 x 0.8 female ISO	M5 x 0.8 female ISO	PDF	<a href="#">PDF</a>	\$8.50	0.02
<a href="#">103310092021002</a>	MVDY-100-3M2	2	(2) M5 x 0.8 female ISO	(2) M5 x 0.8 female ISO	(2) M5 x 0.8 female ISO		<a href="#">PDF</a>	\$20.50	0.09
<a href="#">103310092041005</a>	MVDY-100-3M4	4	(2) M5 x 0.8 female ISO	(4) M5 x 0.8 female ISO	(2) M5 x 0.8 female ISO		<a href="#">PDF</a>	\$31.00	0.13
<a href="#">103310092061002</a>	MVDY-100-3M6	6	(2) M5 x 0.8 female ISO	(6) M5 x 0.8 female ISO	(2) M5 x 0.8 female ISO		<a href="#">PDF</a>	\$41.00	0.18
<a href="#">103310092081002</a>	MVDY-100-3M8	8	(2) M5 x 0.8 female ISO	(8) M5 x 0.8 female ISO	(2) M5 x 0.8 female ISO		<a href="#">PDF</a>	\$51.00	0.21



Part No. [103310091000001](#)



Part No. [203300000000011](#)

10mm Miniature Solenoid Valve Accessories						
Part No.	Mfg. Part No.	Description	Manufacturer Technical Specifications	Drawing Link	Price	Weight (lb)
<a href="#">103310091000001</a>	MVDY-100-3P	Mindman blanking plate, plated steel. For use with MVDY-100 series manifolds. Mounting screws included.	PDF	<a href="#">PDF</a>	\$4.00	0.01
<a href="#">203300000000011</a>	MVDY-100-WDR3	Mindman solenoid valve cable, JAM RMH male to pigtail, straight cable entry, 24 VDC, 24 AWG, 9.8ft/3m cable length. For use with MVDY-100 series miniature solenoid valves.		<a href="#">PDF</a>	\$3.50	0.06