



MVAA - Air Pilot Valves



Part No. [104018033034006](#)



Part No. [104030017054004](#)

The MVAA series are compact pilot-operated valves designed to work with externally supplied pilot air, eliminating the need for electrical solenoids. Available in four size ranges with 1/8", 1/4", 3/8", and 1/2" ports. Configurations include 3-way and 4-way options with single pilot and double pilot actuation, plus specialized center position variants (closed/pressure/exhaust) for the larger sizes.

Features

- Pilot-operated design: Operates using external pilot air supply, providing flexible control without electrical connections in hazardous or remote locations
- Scalable capacity range: Four size options to accommodate diverse flow requirements from compact to high-capacity applications
- Versatile pilot configurations: Single pilot and double pilot, with specialized center positions available on larger models for enhanced control flexibility
- NPT threading: Standard NPT ports for North American pneumatic systems, with manifold compatibility using MVSC1/MVSC series mounting components for multi-station installations

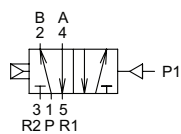


Diagram "A"

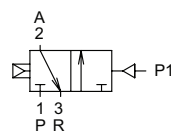


Diagram "B"

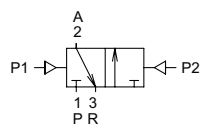


Diagram "C"

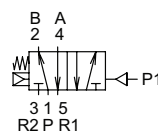


Diagram "D"

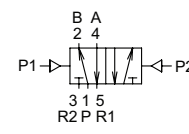


Diagram "E"

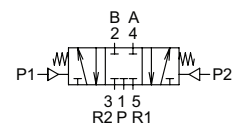


Diagram "F"

MVAA - Air Pilot Valves								
Part No.	104015015021004	104015016021003	104018033034006	104018044034004	104018015034005	104018016034004	104022015044005	104022016044004
Mfg. Part No.	MVAA-150-4A1	MVAA-150-4A2	MVAA-180-3A1-NC-NPT	MVAA-180-3A2-NPT	MVAA-180-4A1-NPT	MVAA-180-4A2-NPT	MVAA-220-4A1-NPT	MVAA-220-4A2-NPT
Price	\$24.00	\$25.00	\$26.00	\$28.00	\$25.00	\$28.00	\$27.00	\$29.00
Drawing Link	PDF	PDF	PDF	PDF	PDF	PDF	PDF	PDF
Weight (lb)	0.14	0.16	0.17	0.20	0.19	0.22	0.29	0.35
Manufacturer Specs	PDF		PDF			PDF		
Valve Type	5-port (4-way)		3-port (3-way)		5-port (4-way)			
Positions	2							
Pneumatic Diagram	A	E	B	C	A	E	D	E
Valve Configuration	N/A		N.C.		N/A			
Acting	Single air pilot internal pilot return	Double air pilot	Single air pilot internal pilot return	Double air pilot	Single air pilot internal pilot return	Double air pilot	Single air pilot spring return	Double air pilot
Inlet Port Size	M5 x 0.8 female ISO		1/8" FNPT		1/8" FNPT		1/4" FNPT	
Outlet Port Size	(2) M5 x 0.8 female ISO		1/8" FNPT		(2) 1/8" FNPT		(2) 1/4" FNPT	
Exhaust	M5 x 0.8 female ISO		1/8" FNPT		(2) 1/8" FNPT		(2) 1/8" FNPT	
Flow (Cv)	0.21		0.67		0.67		1	
Media	Filtered air without lubrication; lubrication, if used, must be continuous							
Min. Operating Pressure	22 psi	0 psi	22 psi	0 psi	22 psi	0 psi		
Max. Operating Pressure	116 psi							
Min. Pilot Pressure	(0.45*Operating Pressure)+15 psi						(0.3*Operating Pressure)+15 psi	
Temperature	23 to 122 °F (-5 to +50 °C)							
Lubrication	ISO VG32 or equivalent							

For additional details see manufacturer's technical specifications, manuals and inserts (where applicable).

Mindman MVA - Air Pilot Valves

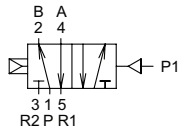


Diagram "A"

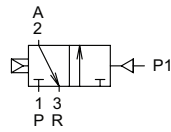


Diagram "B"

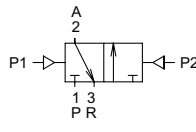


Diagram "C"

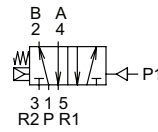


Diagram "D"

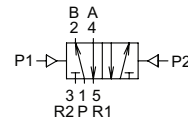


Diagram "E"

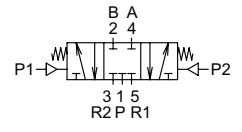


Diagram "F"

MVA - Air Pilot Valves								
Part No.	104022017044004		104030015054005		104030016054004		104030017054004	
Mfg. Part No.	MVA-220-4A2C-NPT		MVA-300-4A1-NPT		MVA-300-4A2-NPT		MVA-300-4A2C-NPT	
Price	\$52.00		\$31.00		\$37.00		\$57.00	
Drawing Link	PDF		PDF		PDF		PDF	
Weight (lb)	0.40		0.63		0.77		0.90	
Manufacturer Specs	PDF		PDF				PDF	
Valve Type	5-port (4-way)							
Positions	3		2		3		2	
Pneumatic Diagram	F		D		E		F	
Valve Configuration	Center closed		N/A		Center closed		N/A	
Acting	Double air pilot		Single air pilot spring return		Double air pilot		Single air pilot spring return	
Inlet Port Size	1/4" FNPT		3/8" FNPT				1/2" FNPT	
Outlet Port Size	(2) 1/4" FNPT		(2) 3/8" FNPT				(2) 1/2" FNPT	
Exhaust	(2) 1/8" FNPT		(2) 3/8" FNPT				(2) 1/2" FNPT	
Flow (Cv)	1		1.94				2.78	
Media	Filtered air without lubrication; lubrication, if used, must be continuous							
Min. Operating Pressure	0 psi							
Max. Operating Pressure	116 psi							
Min. Pilot Pressure	(0.3*Operating Pressure)+15 psi		(0.34*Operating Pressure)+15 psi					
Temperature	23 to 122 °F (-5 to +50 °C)							
Lubrication	ISO VG32 or equivalent							

For additional details see manufacturer's technical specifications, manuals and inserts (where applicable).