

Medium RHC Series NEMA 1 and 3R Hinge-Cover Wall Mount



Applications

Designed for use as wiring boxes and junction boxes, these enclosures provide protection against rain, sleet and snow in outdoor applications, or against dripping water indoors.

Construction

- Bodies and doors fabricated from 14 gauge carbon steel
- Continuous hinge
- Hinge is made of galvanized steel with a stainless steel pin
- No knockouts
- Collar studs provided for mounting optional back panels
- External mounting plates, top and bottom of enclosure
- Hasp and staple provided for padlocking

Finish

- ANSI 61 gray polyester powder light texture over phosphatized surfaces, inside and out

Listings

- UL 508, Types 1 & 3R [UL file E6924]
- CSA Certified, Type 1 & 3R [CSA file LL66078]
- NEMA/EEMAC Type 1 & 3R



Enclosure Shipping Schedule		
Same day	1 - 7 days	1 - 15 days
Color indicates shipping lead time in business days.		

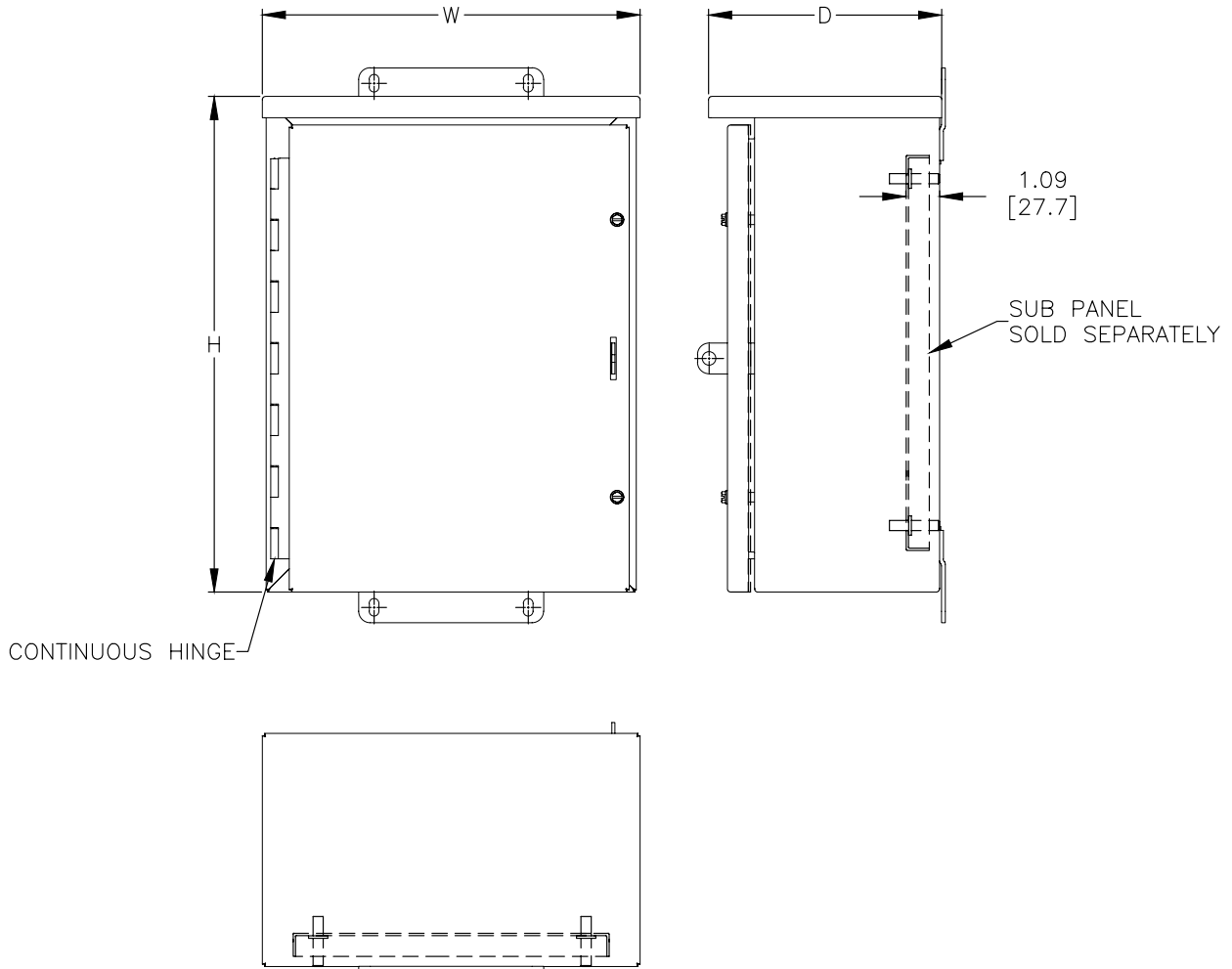
Medium RHC Series NEMA 1 and 3R Hinge-Cover Wall Mount						
Part Number	Price	Enclosure Size HxWxD	Painted Steel Subpanel	Stainless Steel Subpanel	Galvanized Subpanel	Perforated Subpanel
RHC161206	\$109.00	16.25 x 12.21 x 7.50 [413 x 310 x 191]	NP1612	NP1612SS	NP1612G	NP1612PP
RHC161606	\$128.00	16.25 x 16.21 x 7.50 [413 x 412 x 191]	NP1616	NP1616SS	NP1616G	NP1616PP
RHC201606	\$146.00	20.25 x 16.21 x 7.50 [514 x 412 x 191]	NP2016	NP2016SS	NP2016G	NP2016PP
RHC202008	\$209.00	20.25 x 20.21 x 9.50 [514 x 513 x 241]	NP2020	NP2020SS	NP2020G	NP2020PP
RHC242008	\$235.00	24.25 x 20.21 x 9.50 [616 x 513 x 241]	NP2420	NP2420SS	NP2420G	NP2420PP
RHC242408	\$265.00	24.25 x 24.21 x 9.50 [616 x 615 x 241]	NP2424	NP2424SS	NP2424G	NP2424PP
RHC302408	\$310.00	30.25 x 24.21 x 9.50 [768 x 616 x 241]	NP3024	NP3024SS	NP3024G	NP3024PP
RHC303012	\$443.00	30.25 x 30.21 x 13.50 [768 x 767 x 343]	NP3030	NP3030SS	NP3030G	NP3030PP
RHC303016	\$476.00	30.25 x 30.21 x 17.50 [768 x 767 x 445]	NP3030	NP3030SS	NP3030G	NP3030PP
RHC362412	\$474.00	36.25 x 24.21 x 13.50 [921 x 616 x 343]	NP3624	NP3624SS	NP3624G	NP3624PP
RHC363012	\$506.00	36.25 x 30.21 x 13.50 [921 x 767 x 343]	NP3630	NP3630SS	NP3630G	NP3630PP
RHC363612	\$577.00	36.25 x 36.21 x 13.50 [921 x 920 x 343]	NP3636	NP3636SS	NP3636G	NP3636PP
RHC423012	\$568.00	42.25 x 30.21 x 13.50 [1073 x 767 x 343]	NP4230	NP4230SS	NP4230G	—
RHC423612	\$648.00	42.25 x 36.21 x 13.50 [1073 x 920 x 343]	NP4236	NP4236SS	NP4236G	—
RHC483612	\$686.00	48.25 x 36.21 x 13.50 [1226 x 920 x 343]	NP4836	NP4836SS	NP4836G	—
RHC483616	\$776.00	48.25 x 36.21 x 17.50 [1226 x 920 x 445]	NP4836	NP4836SS	NP4836G	NP4836PP
RHC603612	\$862.00	60.25 x 36.21 x 13.50 [1530 x 920 x 343]	NP6036	NP6036SS	NP6036G	—

Note: Dimensions in inches [millimeters]
 Letters in table correspond to letters on dimensional drawings.
 *Back panels must be ordered separately.

RHC Series NEMA 1 and 3R Hinge-Cover Wall Mount

Dimensions

in [mm]



See our website: www.AutomationDirect.com for complete engineering drawings.

Enclosure Subpanels



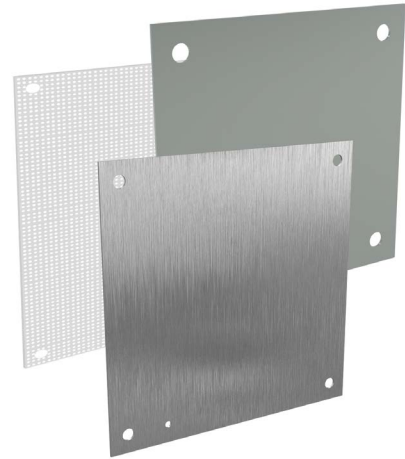
Subpanels for NEMA 1, 12, 4 and 4X Wall Mount Enclosures and WC9 NEMA 12 Operator Consoles

- 12 gauge steel (perforated subpanels are 14 gauge)
- Subpanels with any side over 17" have 3/4" flange on all sides
- Painted steel and perforated subpanels are white polyester powder over phosphatized surfaces
- Galvanized subpanels have a conductive finish (no paint)

Panels listed fit the following enclosures:

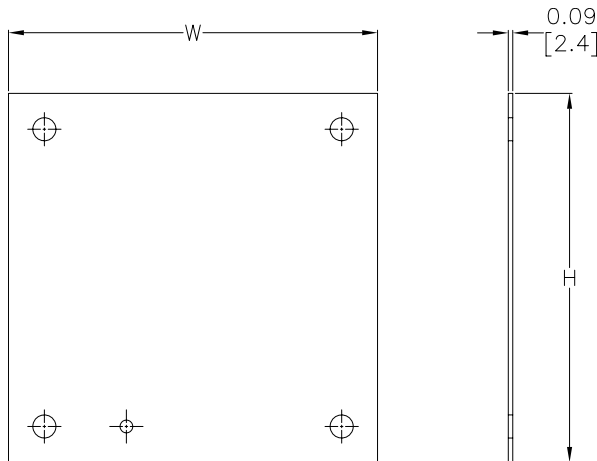
- NEMA 1 large (N1C, 42in width and wider)
- NEMA 12 single door wall mount (N12)
- NEMA 12 two door wall mount (WA_WF)
- NEMA 12 single door flush wall mount (WA_FM)
- NEMA 4 (N4) and 4X (SSN) single door wall mount
- NEMA 12 operator consoles (WC9)
- NEMA 12 Wall Disconnect (SDN12_PL & ABN12)
- NEMA 4 & 4X Wall Mount Disconnect (SSN4 & SSN4X)

NOTE: Use NPxxxx subpanels in NEMA 1, NEMA 4 and 4X, and NEMA 12 enclosures only. Do NOT use NPxxxx subpanels in N412 Ultimate Series enclosures with a C in the suffix.



Dimensions

in [mm]



Perforated panels have 0.13" diameter holes at 0.25" spacing.

NOTE:
SUBPANELS LARGER THAN
20 X 20 HAVE (2) 0.31"
GROUND HOLES.

See our website: www.AutomationDirect.com for complete engineering drawings.

Enclosures Subpanels



Enclosure Shipping Schedule	
Same day	1 - 7 days
Color indicates shipping lead time in business days.	

Subpanels for NEMA 1, 12, 4 and 4X Wall Mount Enclosures and WC9 NEMA 12 Operator Consoles									
Painted Steel	Price	Galvanized	Price	Perforated	Price	304 Stainless Steel	Price	Nominal Enclosure Size HxW	Subpanel Size AxB
NP1212	\$16.00	NP1212G	\$16.00	-		-		12 x 12	9.00 x 9.00 [229 x 229]
NP1224	\$30.50	NP1224G	\$30.50	-		-		24 x 12	9.00 x 21.00 [229 x 533]
NP1612	\$19.50	NP1612G	\$19.50	NP1612PP	\$181.00	NP1612SS	\$52.00	12 x 16 16 x 12	13.00 x 9.00 [330 x 229]
NP1616	\$26.50	NP1616G	\$26.50	NP1616PP	\$181.00	NP1616SS	\$70.00	16 x 16	13.00 x 13.00 [330 x 330]
NP2012	\$28.50	NP2012G	\$28.50	-		-		12 x 20 20 x 12	17.00 x 9.00 [432 x 229]
NP2016	\$26.50	NP2016G	\$26.50	NP2016PP	\$181.00	NP2016SS	\$70.00	20 x 16 16 x 20	17.00 x 13.00 [432 x 330]
NP2020	\$33.00	NP2020G	\$33.00	NP2020PP	\$181.00	NP2020SS	\$93.00	20 x 20	17.00 x 17.00 [432 x 432]
NP2416	\$37.00	NP2416G	\$37.00	-		NP2416SS	\$105.00	24 x 16	21.00 x 13.00 [533 x 330]
NP2420	\$45.00	NP2420G	\$45.00	NP2420PP	\$181.00	NP2420SS	\$119.00	20 x 24 24 x 20	21.00 x 17.00 [533 x 432]
NP2424	\$47.50	NP2424G	\$47.50	NP2424PP	\$181.00	NP2424SS	\$128.00	24 x 24	21.00 x 21.00 [533 x 533]
NP3016	\$49.00	NP3016G	\$49.00	-		-		30 x 16	27.00 x 13.00 [686 x 330]
NP3020	\$60.00	NP3020G	\$60.00	-		NP3020SS	\$164.00	30 x 20	27.00 x 17.00 [686 x 432]
NP3024	\$57.00	NP3024G	\$57.00	NP3024PP	\$181.00	NP3024SS	\$155.00	24 x 30 30 x 24	27.00 x 21.00 [686 x 533]
NP3030	\$97.00	NP3030G	\$97.00	NP3030PP	\$181.00	NP3030SS	\$276.00	30 x 30	27.00 x 27.00 [686 x 686]
NP3624	\$75.00	NP3624G	\$75.00	NP3624PP	\$181.00	NP3624SS	\$213.00	36 x 24	33.00 x 21.00 [838 x 533]
NP3630	\$99.00	NP3630G	\$99.00	NP3630PP	\$181.00	NP3630SS	\$263.00	30 x 36 36 x 30	33.00 x 27.00 [838 x 686]
NP3636	\$117.00	NP3636G	\$117.00	NP3636PP	\$181.00	NP3636SS	\$318.00	36 x 36	33.00 x 33.00 [838 x 838]
NP4024	\$99.00	NP4024G	\$99.00	-		-		40 x 24	37.00 x 21.00 [940 x 533]
NP4224	\$95.00	NP4224G	\$95.00	-		-		42 x 24	39.00 x 21.00 [991 x 533]
NP4230	\$126.00	NP4230G	\$126.00	NP4230PP	\$181.00	NP4230SS	\$343.00	42 x 30	39.00 x 27.00 [991 x 686]
NP4236	\$148.00	NP4236G	\$148.00	NP4236PP	\$181.00	NP4236SS	\$411.00	42 x 36	39.00 x 33.00 [991 x 838]
NP4824	\$107.00	NP4824G	\$107.00	-		-		48 x 24	45.00 x 21.00 [1143 x 533]
NP4830	\$141.00	NP4830G	\$141.00	-		-		48 x 30	45.00 x 27.00 [1143 x 686]
NP4836	\$168.00	NP4836G	\$168.00	NP4836PP	\$181.00	NP4836SS	\$446.00	48 x 36	45.00 x 33.00 [1143 x 838]
NP6030	\$174.00	NP6030G	\$174.00	-		-		60 x 30	57.00 x 27.00 [1448 x 686]
NP6036	\$206.00	NP6036G	\$206.00	NP6036PP	\$181.00	NP6036SS	\$588.00	60 x 36	57.00 x 33.00 [1448 x 838]
NP7230	\$200.00	NP7230G	\$200.00	-		-		72 x 30	69.00 x 27.00 [1753 x 686]
NP7236	\$245.00	NP7236G	\$245.00	-		-		72 x 36	69.00 x 33.00 [1753 x 838]

Notes: Dimensions in inches [millimeters].

Letters in table correspond to letters on dimensional drawing.

Disconnect enclosures will be up to 2 inches [51mm] wider than width dimensions in this table.

See our website: www.AutomationDirect.com for complete engineering drawings.