

NEMA Premium[®] Efficiency XRI[®] Series Inverter Duty Motors



Features

- Meets or exceeds NEMA Premium efficiencies
- Inverter duty
- Suitable for use with ALS (across-the-line starting) or IGBT (AC drive)
- 10:1 variable torque and constant torque on VFD with 1.0 service factor
- 1.15 service factor on sinewave; 1.0 service factor on IGBT power
- Class F insulation
- Continuous duty at 40° C ambient
- Rolled steel construction with C-face rigid base mounting
- F3 conduit box location
- Utilizes ball bearings
- Electrically reversible
- UL Recognized, CSA Certified, and CE Mark
- Three-year warranty (through Marathon Electric)

Applications

- Typical uses include gear reducers, pumps, machine tools, and other direct-coupled equipment installed in damp, dusty, or dirty environments where long life and ultra-high efficiency is desired.

Motor Shipping Schedule *

Same or one day * Up to 7 days Up to 10 days

Color indicates shipping lead time in business days. Check stock status online.

* Certain heavy and oversized items can be shipped only via LTL. Check our website for current shipping method constraints by part number.

208-230/460V Motor Specifications

Part Number*	Price	HP	Base RPM	Volts	Enclosure	NEMA Frame	Model No.	F.L. Amps	Weight (lb)*	Drawing Links			
E2000	\$803.00	1	3600	208-230 / 460	TEFC	56C	056T34F5940	3.0-2.8 / 1.4	28	PDF			
E2001A	\$655.00		1800			143TC	143TTFR16053	3.3-3.3 / 1.65	48	PDF			
E2002	\$735.00		1200			145TC	145TTFR6078	3.8-3.8 / 1.9	42	PDF			
E2003	Retired	1-1/2	3600			143TC	143TTFR5582	4.4-4.0 / 2.0	39	PDF			
E2004A	\$689.00		1800			145TC	145TTFR16331	4.7-4.6 / 2.3	50	PDF			
E2007A	\$739.00		2			1800	145TC	145TTFR16329	6.2-6.0 / 3.0	65	PDF		
E2009 †	Retired	3	3600			208-230 / 460	TEFC	182TC	182TTFW6001	8.4-7.8 / 3.9	63	PDF	
E2010 †	Retired		1800						182TTFW6026	8.4-7.8 / 3.9	87	PDF	
E2011A	Retired		1200					213TC	213TTFWD6076	9.2-8.8 / 4.4	117	PDF	
E2013 †	Retired	5	1800					208-230 / 460	TEFC	184TC	184TTFW6026	12.6 / 6.3	87
E2014A	Retired		1200	215TC	215TTFWD6076					14.8-17 / 7	150	PDF	
E2016B	Retired		7-1/2	1800	213TC					213TTFWD16039	20.8-19.6 / 9.8	124	PDF
E2018A	Retired	10	3600	230 / 460	215TC					215TTFWD6001	23.6 / 11.8	133	PDF

* Refer to the Motor Shipping Schedule table for shipping information.

Certain heavy and oversized items can be shipped only via LTL. Check our web site for current shipping method constraints by part number.

† These specifications are for the Marathon motor currently being sold. Marathon manufactured a previous version of this Part Number (that had a different model #), and that version had some different specifications. For detailed information on the previous motor, please refer to the "Previous Marathon Model Numbers" table on the next page, or click on the previous motor's specification at www.AutomationDirect.com/Retired-Products.

Notes: Please review the AutomationDirect Terms & Conditions for warranty and service on this product.

Warranty service can be arranged through numerous Marathon Electric service centers.

See list of service centers on our Web site at www.automationdirect.com.

NEMA Premium[®] Efficiency XRI[®] Series Inverter Duty Motors

Performance Data

Performance Data (460 Volt)															
Part Number	HP	NEMA Design	F.L. RPM	Min RPM	Current (Amps)			Torque (lb-ft)			Max CHP RPM*	Max Safe RPM	F.L. Effic. (%)	F.L. Power Factor	Rotor Inertia (lb-ft ²)
					No Load	Full Load	Locked Rotor	Full Load	Locked Rotor	Break-down					
E2000	1	B	3490	349	0.7	1.4	10	1.5	3.6	5.1	5235	7200	80	84	0.04
E2001A		A	1765	177	1.2	1.7	17	3.0	13.7	16.8	1765	4000	85.5	68	0.12
E2002	1-1/2	B	1170	117	1.3	1.9	10	4.5	13.5	15.8	1755	5400	82.5	60	0.14
E2003			3490	349	1.0	2.0	21	2.3	8.5	11.2	5235	7200	84.0	82	0.06
E2004A			1755	176	1.5	2.3	24	4.5	21.2	26	1755	4000	86.5	71	0.14
E2007A			2	1760	176	1.9	3.0	30.5	6.0	24.5	33.2	1760	4000	86.5	71
E2009 †	3	B	3510	351	1.8	3.9	33	4.5	11.0	18.2	5265	7200	86.5	83	0.23
E2010 †			1760	176	1.9	3.9	33.5	8.9	22.5	36	2640	4000	89.5	80.5	0.38
E2011A	5	B	1170	117	2.5	4.4	32	13.5	34	47.5	1755	4200	89.5	70	0.80
E2013 †			1760	176	2.4	6.3	49	15.0	30.1	50.2	2640	4000	89.5	83	0.49
E2014A	7-1/2	B	1170	117	3.7	7.0	46	22.5	45.6	68.2	1755	4000	89.5	75	1.00
E2016B			1765	177	4.9	9.8	67.5	22.3	52.9	75	1765	4000	91.7	78.3	0.85
E2018A	10	B	3535	354	3.5	11.8	80	14.9	30	46	5302.5	5400	91.7	87	0.65

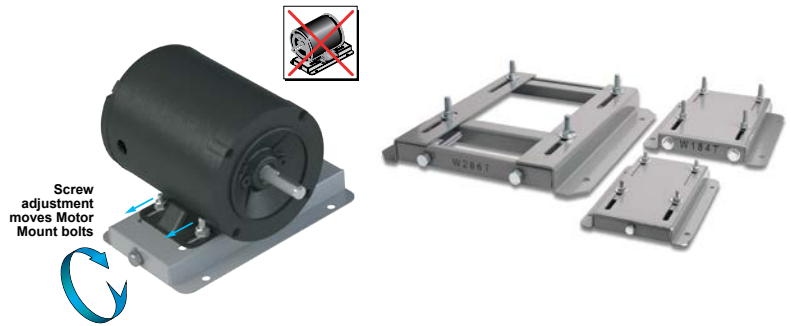
* Maximum Constant HP RPM is for direct coupled loads.

† These specifications are for the Marathon motor currently being sold. Marathon manufactured a previous version of this Part Number (that had a different model #), and that version had some different specifications. For detailed information on the previous motor, please refer to the "Previous Marathon Model Numbers" table below, or click on the previous motor's specification at www.AutomationDirect.com/Retired-Products.

STABLE™ Motor Slide Bases

Mounting Slide Bases for 56 to 449T NEMA Motors Features

- Allows adjustment of motor mounting position
- Slide direction is perpendicular to motor shaft
- Double adjusting screws for frames 182T-449T
- Manufactured to precise dimensional standards
- Dimensionally interchangeable with existing major makes
- Heavy-duty steel construction
- Painted with oven-baked primer for better adhesion of customer's paint
- All "D" bolts (motor mounting bolts) are fixed to the exact motor foot pattern
- All "D" bolts are welded into position to prevent spinning and dropping from slots
- Nuts and washers are provided for securing the motor to the slide base



STABLE Motor Slide Bases for 3-Phase Motors

Part Number (MTA-BASE-xxx)	Price	Fits Frame Type	Product Wt. (lb)	Fits Motor					Drawing Links		
				IronHorse	Leeson®	WEG (Part number ending in...)	Marathon				
					WashGuard®		microMAX, Max +, Black Max, Blue Max, SyMAX	XRI GP & NEMA Premium, Jet Pump		Globetrotter	
W56	\$14.00	56*	2.8	MTPM-P3x-1x18							
				MTPM-P5x-1x18							
				MTPM-P7x-1x18							
				MTPM-0xx-1x18							
				MTPM-1xx-1x18							
				MTR(2)(P)-xxx-xxxxx*							
				MTRJ(P)-xxx-xxxxx							
				MTSN-P33-3BD18							
				MTSN-P33-3BD18R							
				MTSN-P33-3BD36	112427.00						
				MTSN-P33-3BD36R	112428.00						
				MTSP-P33-3BD18	112429.00						
				MTSP-P33-3BD18R	112430.00						
				MTSP-P33-3BD36	113019.00						
				MTSP-P33-3BD36R	113023.00						
				MTSN-P50-3BD18	113473.00						E2000
				MTSN-P50-3BD18R	113586.00						D390
				MTSN-P50-3BD36	113590.00						G580
				MTSP-P50-3BD12	113591.00						D391
				MTSP-P50-3BD18	113649.00						G581
				MTSP-P50-3BD18R	116644.00						K705
				MTSP-P50-3BD36	116645.00						D392
				MTSP-P50-3BD36R	119468.00						G582
				MTSN-P75-3BD18	119469.00						K707
				MTSN-P75-3BD18R	119471.00						D393A
				MTSN-P75-3BD36	119475.00						K708A
				MTSP-P75-3BD12	119476.00			(...)56-S			G583A
				MTSP-P75-3BD18	119478.00			(...)56C-S			K709A
				MTSP-P75-3BD18R	119480.00						D394A
				MTSP-P75-3BD36	119482.00						K721A
				MTSP-P75-3BD36R	119483.00						G584A
				MTSN-001-3BD18	191202.00						D395A
				MTSN-001-3BD18R	191204.00						G585A
				MTSN-001-3BD36	191205.00						K724A
				MTSP-001-3BD18	191206.00						D396A
				MTSP-001-3BD18R	191207.00						K725A
				MTSP-001-3BD36	191208.00						J066A
				MTSP-001-3BD36R	191560.00						
				MTSN-1P5-3BD18	191561.00						
				MTSN-1P5-3BD18R	191562.00						
				MTSN-1P5-3BD36	191563.00						
				MTSP-1P5-3BD18	191564.00						
				MTSP-1P5-3BD18R	191569.00						
				MTSP-1P5-3BD36							
				MTSP-1P5-3BD36R							
MTSN-002-3BD18											
MTSN-002-3BD18R											
MTSN-002-3BD36											
MTSP-002-3BD18											
MTSP-002-3BD18R											
MTSP-002-3BD36											
MTSP-002-3BD36R											

* IronHorse MTR2 56HC motors have double-punched bases to fit on slide base MTA-BASE-W56.

STABLE™ Motor Slide Bases

STABLE Motor Slide Bases for 3-Phase Motors										
Part Number (MTA-BASE-xxx)	Price	Fits Frame Type	Product Wt. (lb)	Fits Motor						Drawing Links
				IronHorse	Leeson®	WEG (Part number ending in...)	Marathon			
					WashGuard®		microMAX, Max+, Black Max, Blue Max, SyMAX	XRI GP & NEMA Premium, Jet Pump	Globetrotter	
<u>W143T</u>	\$26.00	143T/TC	4.6	MTCP2-001-3BD18(C) MTCP2-1P5-3BD36 MTSN-1P5-3BD36-14 MTSP-1P5-3BD36-14 MTSP-1P5-3BD36R-14	<u>191487.00</u> <u>191565.00</u>		<u>Y536(-A772)</u>	<u>E2001A</u> <u>E2003</u>	-	<u>PDF</u>
<u>W145T</u>	\$26.00	145T/TC	5.1	MTCP2-001-3BD12 MTCP2-1P5-3BD18(C) MTCP2-002-3BD18(C) MTCP2-002-3BD36 MTSP-001-3BD12 MTSN-1P5-3BD18-14 MTSN-1P5-3BD18R-14 MTSP-1P5-3BD18-14 MTSP-1P5-3BD18R-14 MTSN-002-3BD18-14 MTSN-002-3BD18R-14 MTSN-002-3BD36-14 MTSP-002-3BD18-14 MTSP-002-3BD18R-14 MTSP-002-3BD36-14 MTSP-002-3BD36R-14	<u>121866.00</u> <u>121868.00</u> <u>121870.00</u> <u>122182.00</u> <u>122184.00</u> <u>122185.00</u> <u>191490.00</u> <u>191491.00</u> <u>191570.00</u>	(...) <u>145T-S</u> (...) <u>145TC-S</u>	<u>Y366</u> <u>Y368</u> <u>Y284</u> <u>Y285</u> <u>Y537</u> <u>Y538(-A772)</u> <u>Y551(-A772)</u>	<u>E2002</u> <u>E2004A</u> <u>E2007A</u>	-	<u>PDF</u>
<u>W182T</u>	\$35.50	182T/TC	9.2	MTCP2-1P5-3BD12 MTCP2-003-3BD18(C) MTCP2-003-3BD36 MTSP-1P5-3BD12 MTSN-003-3BD18-18 MTSN-003-3BD36-18 MTSP-003-3BD18-18 MTSP-003-3BD36-18	<u>132196.00</u> <u>132198.00</u>		<u>Y1999</u> <u>Y286A</u> <u>Y541A(-A772)</u> <u>SY036</u> <u>SY066</u>	<u>E2009</u> <u>E2010</u>	<u>GT0010A</u> <u>GT1010A</u>	<u>PDF</u>
<u>W184T</u>	\$35.50	184T/TC	10	MTCP2-002-3BD12 MTCP2-005-3BD18(C) MTCP2-005-3BD36 MTF-00x-1C18 MTSP-002-3BD12 MTSP-005-3BD18 MTSP-005-3BD36	<u>132197.00</u> <u>132200.00</u> <u>132201.00</u> <u>132440.00</u>		<u>Y1372</u> <u>Y287A</u> <u>Y540(-A772)</u> <u>Y543A(-A772)</u> <u>E2012</u> <u>E2013</u> <u>SY007A</u> <u>SY067</u>	-	<u>GT0013A</u> <u>GT1013A</u> <u>GT1210A</u> <u>GT1212A</u> <u>GT1213A</u>	<u>PDF</u>
<u>W213T</u>	\$52.00	213T/TC	13	MTCP2-003-3BD12 MTCP2-7P5-3BD18(C) MTCP2-7P5-3BD36 MTSP-003-3BD12 MTSP-7P5-3BD18	<u>140819.00</u> <u>140822.00</u> <u>141266.00</u>		<u>Y994</u> <u>Y542(-A772)</u> <u>Y545(-A772)</u> <u>E2011</u> <u>E2016A</u> <u>E2011A</u> <u>E2016B</u> <u>SY068</u>	-	<u>GT0016A</u> <u>GT1016A</u> <u>GT1216A</u>	<u>PDF</u>
<u>W215T</u>	\$52.00	215T/TC	15	MTCP2-005-3BD12 MTCP2-010-3BD18(C) MTCP2-010-3BD36 MTSP-005-3BD12 MTSP-010-3BD18	<u>140820.00</u> <u>140821.00</u>		<u>Y996</u> <u>Y544(-A772)</u> <u>Y547(-A772)</u> <u>E2018</u> <u>E2014A</u> <u>E2018A</u> <u>SY069</u>	-	<u>GT0019A</u> <u>GT1019A</u> <u>GT1218A</u> <u>GT1219A</u>	<u>PDF</u>
<u>W254T</u>	\$71.00	254T/TC	18	MTCP2-7P5-3BD12 MTCP2-015-3BD18(C) MTCP2-015-3BD36 MTSP-015-3BD18	-		<u>Y546(-A772)</u> <u>Y549(-A772)</u>	-	<u>GT0059</u> <u>GT1022A</u> <u>GT1222A</u>	<u>PDF</u>

* IronHorse MTR2 56HC motors have double-punched bases to fit on slide base [MTA-BASE-W56](#).

STABLE™ Motor Slide Bases

STABLE Motor Slide Bases for 3-Phase Motors										
Part Number (MTA-BASE- xxx)	Price	Fits Frame Type	Product Wt. (lb)	Fits Motor						Drawing Links
				IronHorse	Leeson®	WEG (Part number ending in...)	Marathon			
					WashGuard®		microMAX, Max+, Black Max, Blue Max, SyMAX	XRI GP & NEMA Premium, Jet Pump	Globetrotter	
W256T	\$71.00	256T/ TC	19	MTCP2-010-3BD12 MTCP2-020-3BD18(C) MTCP2-020-3BD36 MTSP-020-3BD18	-		Y548(-A774) Y552	-	GT0062 GT1025A GT1225A	PDF
W284T	\$79.00	284T/ TC	20	MTCP2-015-3BD12 MTCP2-025-3BD18(C)	-		-	-	GT0065 GT1028A	PDF
W286T	\$79.00	286T/ TC	21	MTCP2-020-3BD12 MTCP2-030-3BD18(C)	-		-	-	GT0067 GT1031A	PDF
W324T	\$116.00	324T/ TC	30	MTCP2-040-3BD18(C)	-		Y571(-A774) Y513(-A775)	-	GT0073 GT1034A	PDF
W326T	\$116.00	326T/ TC	31	MTCP2-050-3BD18(C)	-		Y572(-A774) Y514(-A775)	-	GT0077 GT1037A	PDF
W364T	\$158.00	364T/ TC	43	MTCP2-060-3BD18(C)	-		Y573(-A774) Y515(-A775)	-	GT1040A	PDF
W365T	\$158.00	365T/ TC	43	MTCP2-075-3BD18(C)	-		Y574(-A774) Y516(-A775)	-	GT1043A	PDF
W404T	\$193.00	404T/ TC	58	-	-		-	-	-	PDF
W405T	\$193.00	405T/ TC	60	MTCP2-100-3BD18(C)	-		Y575(-A774) Y517(-A775)	-	GT1046A	PDF
W444T	\$219.00	444T	63	MTCP2-125-3BD18	-		-	-	GT1049A	PDF
W445T	\$219.00	445T	65	MTCP2-150-3BD18	-		-	-	GT1052A	PDF
W447T	\$288.00	447T	89	MTCP2-200-3BD18	-		-	-	GT1055A	PDF
W449T	\$288.00	449T	94	MTCP2-250-3D18 MTCP2-300-3D18	-		-	-	-	PDF

* IronHorse MTR2 56HC motors have double-punched bases to fit on slide base [MTA-BASE-W56](#).

STABLE™ Motor Slide Bases

Mounting Slide Bases for 56 to 215T NEMA Motors Features

STABLE Motor Slide Bases for 1-phase Motors									
Part Number	Price	Fits Frame Type	Product Wt. (lb)	Fits Motor					
				IronHorse	Leeson®	Marathon			
					Washguard®	Marathon DP GP (NEMA Service Factor)	Marathon DP Air Compressor	Fan & Blower	Marathon TE GP 4-in-1
<u>MTA-BASE-W56</u>	\$14.00	56*	2.8	MTR2-xxx-1AB18 MTR2-xxx-1AB36 MTPM-xxx-1L18 MTPM-xxx-1M18	112431.00	<u>C158A</u>	D010 C169 C704 D017	<u>C216</u>	<u>G570</u>
					112527.00	<u>G915A</u>		<u>D311</u>	
					112528.00	<u>C175A</u>		<u>C1153</u>	<u>G571</u>
					112529.00	<u>C167A</u>		<u>C1155</u>	<u>D312</u>
					113583.00	<u>C179A</u>		<u>B319</u>	<u>G572</u>
					114311.00	<u>G937A</u>		<u>D118</u>	<u>D313</u>
					114313.00	<u>C185A</u>		<u>C1158</u>	<u>G573</u>
					114317.00	<u>C187A</u>		<u>C235</u>	<u>D314</u>
					191475.00	<u>C193A</u>		<u>D115</u>	<u>G574</u>
					191477.00	<u>E261A</u>		<u>C1160</u>	<u>D315</u>
					191479.00	<u>E268A</u>		<u>C1161</u>	<u>G575</u>
						<u>EG277A</u>		<u>B352</u>	<u>D316</u>
					<u>MTA-BASE-W143T</u>	\$26.00		143T / TC	4.6
<u>MTA-BASE-W145T</u>	\$26.00	145TC / TC	5.1	-	-	<u>C191</u> <u>I127</u> <u>C194</u>	-	-	-
<u>MTA-BASE-W182T</u>	\$35.50	182T / TC	9.2	-	-	-	-	-	-
<u>MTA-BASE-W184T</u>	\$35.50	184 / TC	10	MTF-00x-1C18	-	-	<u>Z502</u>	-	-
<u>MTA-BASE-W213T</u>	\$52.00	213T / TC	13	-	-	-	-	-	-
<u>MTA-BASE-W215T</u>	\$52.00	215T T TC	15	-	-	-	-	-	-

* IronHorse MTR2 56HC motors have double-punched bases to fit on slide base [MTA-BASE-W56](#).