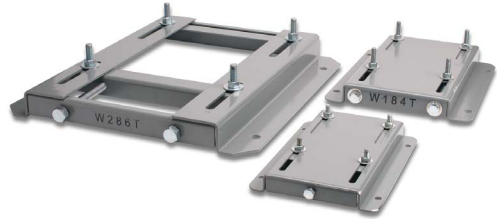


STABLE™ Motor Slide Bases

Mounting Slide Bases for 56 to 449T NEMA Motors Features

- Allows adjustment of motor mounting position
- Slide direction is perpendicular to motor shaft
- Double adjusting screws for frames 182T-449T
- Manufactured to precise dimensional standards
- Dimensionally interchangeable with existing major makes
- Heavy-duty steel construction
- Painted with oven-baked primer for better adhesion of customer's paint
- All "D" bolts (motor mounting bolts) are fixed to the exact motor foot pattern
- All "D" bolts are welded into position to prevent spinning and dropping from slots
- Nuts and washers are provided for securing the motor to the slide base

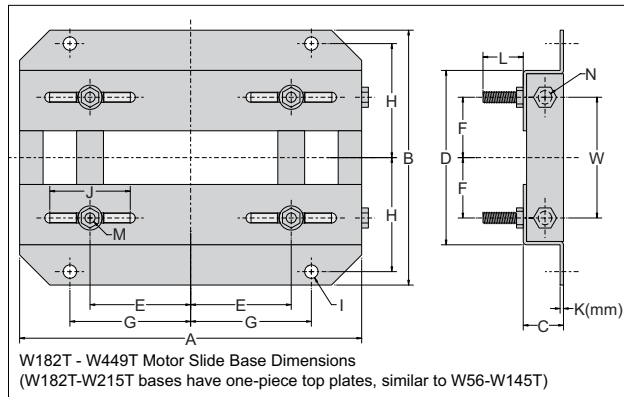
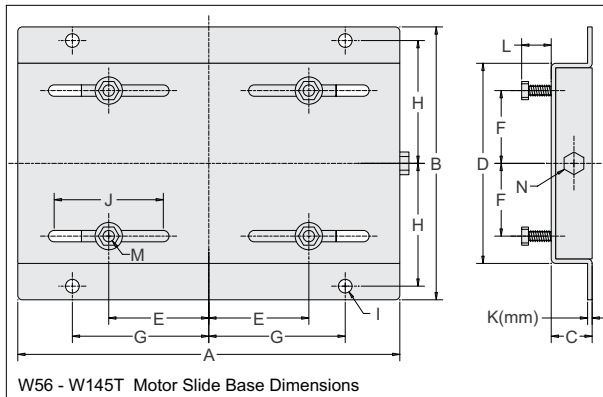


STABLE Motor Slide Bases												
Part Number	Price	Fits Frame Type	Product Weight (lb)	Fits Motor								
				IronHorse	Marathon					NEMA Premium XRI	Blue Chip XRI 230/460V	Blue Chip XRI 575V
					micro-MAX	MAX+	Black Max 230/460V	Black Max 575V	Blue Max			
MTA-BASE-W56*	\$9.75	56*	2.8	MTPM-P3x-1x18 MTPM-P5x-1x18 MTPM-P7x-1x18 MTPM-0xx-1x18 MTPM-1xx-1x18 MTR(2)(P)-xxx-xxxx*	Y500 Y502 Y360 Y362 Y364	Y280 Y281 Y282	Y592(-A772) Y534(-A772) Y535(-A772)	Y555(-A772) Y556(-A772)	-	E2000	-	-
MTA-BASE-W143T	\$18.00	143T/TC	4.6	MTC(P)-001-3BD18(C)(CK) MTC(P)-1P5-3BD36	-	-	Y536(-A772)	-	-	E2001A E2003	-	-
MTA-BASE-W145T	\$18.00	145T/TC	5.1	MTC(P)-001-3BD12 MTC(P)-1P5-3BD18(C)(CK) MTC(P)-002-3BD18(C)(CK) MTC(P)-002-3BD36	Y366 Y368	Y284 Y285	Y537(-A772) Y538(-A772) Y551(-A772)	Y557(-A772)	-	E2002 E2004A E2006 E2007A	-	-
MTA-BASE-W182T	\$24.00	182T/TC	9.2	MTC(P)-1P5-3BD12 MTC(P)-003-3BD18(C)(CK) MTC(P)-003-3BD36 MTF-002-1C18-182	Y1999	Y286A	Y541A(-A772)	Y558A(-A772)	-	E2005 E2009 E2010	-	-
MTA-BASE-W184T	\$24.00	184T/TC	10	MTC(P)-002-3BD12 MTC(P)-005-3BD18(C)(CK) MTC(P)-005-3BD36 MTF-00x-1C18	Y1372	Y287A	Y540(-A772) Y543A(-A772)	Y559A(-A772)	-	E2008 E2012 E2013	-	-
MTA-BASE-W213T	\$35.00	213T/TC	13	MTC(P)-003-3BD12 MTC(P)-7P5-3BD18(C)(CK) MTC(P)-7P5-3BD36	Y994	-	Y542(-A772) Y545(-A772)	Y560(-A772)	-	E2011 E2015 E2016A	-	-
MTA-BASE-W215T	\$35.00	215T/TC	15	MTC(P)-005-3BD12 MTC(P)-010-3BD18(C)(CK) MTC(P)-010-3BD36	Y996	-	Y544(-A772) Y547(-A772)	Y561(-A772)	-	E2014 E2018 E2019A	-	-
MTA-BASE-W254T	\$49.00	254T/TC	18	MTC(P)-7P5-3BD12 MTC(P)-015-3BD18(C)(CK) MTCP-015-3BD36	-	-	Y546(-A772) Y549(-A772)	Y562(-A772)	-	-	E205	E307
MTA-BASE-W256T	\$49.00	256T/TC	19	MTC(P)-010-3BD12 MTC(P)-020-3BD18(C)(CK) MTCP-20-3BD36	-	-	Y548(-A772) Y552(-A772)	Y563(-A772)	-	-	E206	E308
MTA-BASE-W284T	\$54.00	284T/TC	20	MTCP-015-3BD12 MTC(P)-025-3BD18(C)(CK)	-	-	Y553(-A772)	-	-	-	E207	E309
MTA-BASE-W286T	\$54.00	286T/TC	21	MTCP-20-3BD12 MTC(P)-030-3BD18(C)(CK)	-	-	Y393(-A772)	-	-	-	E208	E310
MTA-BASE-W324T	\$81.00	324T/TC	30	MTC(P)-040-3BD18(C)(CK)	-	-	-	-	Y571(-A774) Y513(-A775)	-	E209	E311
MTA-BASE-W326T	\$81.00	326T/TC	31	MTC(P)-050-3BD18(C)(CK)	-	-	-	-	Y572(-A774) Y514(-A775)	-	E210	E312
MTA-BASE-W364T	\$110.00	364T/TC	43	MTC(P)-060-3BD18(C)(CK)	-	-	-	-	Y573(-A774) Y515(-A775)	-	E211	E313
MTA-BASE-W365T	\$110.00	365T/TC	43	MTC(P)-075-3BD18(C)(CK)	-	-	-	-	Y574(-A774) Y516(-A775)	-	E212	E315
MTA-BASE-W404T	\$136.00	404T/TC	58	-	-	-	-	-	-	-	-	-
MTA-BASE-W405T	\$136.00	405T/TC	60	MTC(P)-100-3BD18(C)(CK)	-	-	-	-	Y575(-A774) Y517(-A775)	-	E213	E314
MTA-BASE-W444T	\$157.00	444T	63	MTC(P)-125-3BD18	-	-	-	-	-	-	-	-
MTA-BASE-W445T	\$157.00	445T	65	MTC(P)-150-3BD18	-	-	-	-	-	-	-	-
MTA-BASE-W447T	\$207.00	447T	89	MTC(P)-200-3BD18	-	-	-	-	-	-	-	-
MTA-BASE-W449T	\$207.00	449T	94	MTC-250-3D18 MTC-300-3D18	-	-	-	-	-	-	-	-

* IronHorse MTR2 56HC motors have double-punched bases to fit on slide base MTA-BASE-W56.

STABLE Motor Slide Bases

Dimensions – Mounting Slide Bases for NEMA Motors



Dimensions [inches, except as noted] - STABLE Motor Slide Bases															
MTA-BASE-Wxxxx	A	B	C	D	E	F	G	H	I	J	K(mm)	L	M	N	W
56	10-5/8	6-1/2	1-1/8	4-1/2	2-7/16	1-1/2	3-13/16	2-7/8	3/8	3	2 mm	7/8	5/16 x 1	3/8 x 4	n/a
143T	10-1/2	7-1/2	1-1/8	5-1/2	2-3/4	2	3-3/4	3-3/8	3/8	3	3 mm	13/16	5/16 x 1	3/8 x 4	n/a
145T	10-1/2	8-1/2	1-1/8	6-1/2	2-3/4	2-1/2	3-3/4	3-7/8	3/8	3	3 mm	13/16	5/16 x 1	3/8 x 4	n/a
182T	12-3/4	9-1/2	1-1/2	6-1/2	3-3/4	2-1/4	4-1/2	4-1/4	1/2	3	3.5 mm	1-1/2	3/8 x 1-3/4	1/2 x 6	4-1/2
184T	12-3/4	10-1/2	1-1/2	7-1/2	3-3/4	2-3/4	4-1/2	4-3/4	1/2	3	3.5 mm	1-1/2	3/8 x 1-3/4	1/2 x 6	5-1/2
213T	15	11	1-3/4	7-1/2	4-1/4	2-3/4	5-1/4	4-3/4	1/2	3-1/2	3.8 mm	1-1/2	3/8 x 1-3/4	1/2 x 6	5-1/2
215T	15	12-1/2	1-3/4	9	4-1/4	3-1/2	5-1/4	5-1/2	1/2	3-1/2	3.8 mm	1-1/2	3/8 x 1-3/4	1/2 x 6	7
254T	17-3/4	15-1/8	2	10-3/4	5	4-1/8	6-1/4	6-5/8	5/8	4	4.6 mm	1-7/16	1/2 x 1-3/4	5/8 x 6	5-5/16
256T	17-3/4	16-7/8	2	12-1/2	5	5	6-1/4	7-1/2	5/8	4	4.6 mm	1-7/16	1/2 x 1-3/4	5/8 x 6	7
284T	19-3/4	16-7/8	2	12-1/2	5-1/2	4-3/4	7	7-1/2	5/8	4-1/2	4.6 mm	1-11/16	1/2 x 2	5/8 x 6	7
286T	19-3/4	18-3/8	2	14	5-1/2	5-1/2	7	8-1/4	5/8	4-1/2	4.6 mm	1-11/16	1/2 x 2	5/8 x 6	8
324T	22-3/4	19-1/4	2-1/2	14	6-1/4	5-1/4	8	8-1/2	3/4	5-1/4	4.6 mm	2-3/16	5/8 x 2-1/2	3/4 x 9	7
326T	22-3/4	20-3/4	2-1/2	15-1/2	6-1/4	6	8	9-1/4	3/4	5-1/4	4.6 mm	2-3/16	5/8 x 2-1/2	3/4 x 9	8-1/2
364T	25-1/2	20-1/2	2-1/2	15-1/2	7	5-5/8	9	9-1/8	3/4	6	5.8 mm	2-1/16	5/8 x 2-1/2	3/4 x 9	7-3/4
365T	25-1/2	21-1/2	2-1/2	16-1/2	7	6-1/8	9	9-5/8	3/4	6	5.8 mm	2-1/16	5/8 x 2-1/2	3/4 x 9	8-3/4
404T	28-3/4	22-3/8	3	16-1/2	8	6-1/8	10	9-7/8	7/8	7	5.8 mm	2-1/2	3/4 x 3	3/4 x 11	8-3/4
405T	28-3/4	23-7/8	3	18	8	6-7/8	10	10-5/8	7/8	7	5.8 mm	2-1/2	3/4 x 3	3/4 x 11	10-1/4
444T	31-1/4	24-5/8	3	19-1/4	9	7-1/4	11	11	7/8	7-1/2	5.8 mm	2-1/2	3/4 x 3	3/4 x 11	11
445T	31-1/4	26-5/8	3	21-1/4	9	8-1/4	11	12	7/8	7-1/2	5.8 mm	2-1/2	3/4 x 3	3/4 x 11	13
447T	31-1/4	30-1/8	3	24-3/4	9	10	11	13-3/4	7/8	7-1/2	8 mm	3	3/4 x 3-1/2	3/4 x 11	16-1/2
449T	31-1/4	35-1/8	3	29-3/4	9	12-1/2	11	16-1/4	7/8	7-1/2	8 mm	3	3/4 x 3-1/2	3/4 x 11	21-1/2