



# Vector Duty Motors



## Features

- Class F IRIS<sup>®</sup> insulation system
- Constant torque operation from 0 to base speed on vector drive
- Constant horsepower operation to twice base RPM
- Continuous duty at 40° C ambient
- Optimized for operation with IGBT inverter (NEMA Design A)
- Class F N/C thermostats (one per phase)
- Utilizes double shielded ball bearings
- Exxon Polyrex<sup>®</sup> EM bearing grease
- C-Face with rigid base, except C-Face with removable rigid base as noted
- F1 standard conduit box location, field reversible to F2 (except as noted)
- Available with optional encoder installed on opposite drive end
- Electrically reversible
- UL Recognized, CSA Certified, and CE Mark
- Three year warranty

Motor Shipping Schedule *		
Same or one day *	Up to 7 days	Up to 10 days

Color indicates shipping lead time in business days. Check stock status online.

\* Certain heavy and oversized items can be shipped only via LTL. Check our website for current shipping method constraints by part number.

## Applications

- Designed for inverter or vector applications where up to a 1000:1 constant torque speed range is required.
- Typical uses include: material handling, machine tools, conveyors, crane and hoist, metal processing, test stands, pumps, compressors, textile processing, and other industrial machinery installed in dusty or dirty environments.

230/460V Motor Specifications											
Part Number *	Price	HP	Base RPM	Volts	Enclosure	NEMA Frame	Model No.	F.L. Amps	Weight (lb) *	Footnotes	Drawing Links
<a href="#">Y592</a>	\$460.00	1/4	1800	230/460	TENV	56C	56H17T2001	1.2 / 0.6	19	T, S, 13	<a href="#">PDF</a>
<a href="#">Y534</a>	\$576.00	1/2	1800	230/460	TENV	56C	56H17T5301	1.6 / 0.8	28	T, S, 6, 13	<a href="#">PDF</a>
<a href="#">Y535</a>	\$687.00	1	1800	230/460	TENV	56C	56H17T5302	3.0 / 1.5	41	T, S, 6, 13	<a href="#">PDF</a>
<a href="#">Y536</a>	\$706.00	1	1800	230/460	TENV	143TC	143THTR5326	3.0 / 1.5	43	T, S, 6, 13	<a href="#">PDF</a>
<a href="#">Y537</a>	\$817.00	1	1200	230/460	TENV	145TC	145THTR5376	3.8 / 1.9	49	T, S, 6, 13	<a href="#">PDF</a>
<a href="#">Y538</a>	\$857.00	1-1/2	1800	230/460	TENV	145TC	145THTR5326	4.8 / 2.4	50	T, S, 6, 13	<a href="#">PDF</a>
<a href="#">Y551</a>	\$1,163.00	2	1800	230/460	TENV	145TC	145HTN6046	6.0 / 3.0	72	T, CI	<a href="#">PDF</a>

\* Refer to the Motor Shipping Schedule table for shipping information.

Footnotes:

- 6 Bolt-on, removable base for footless mounting option
- 13 F1 Mounting Only, cannot modify to F2
- AL Aluminum Frame Construction

Footnotes (continued):

- CI Cast-iron Frame Construction
- I Intermittent duty from 90-120 Hz operation
- S Steel Frame Construction

Footnotes (continued):

- T Thermostat overload

Note: Please review the AutomationDirect Terms & Conditions for warranty and service on his product.

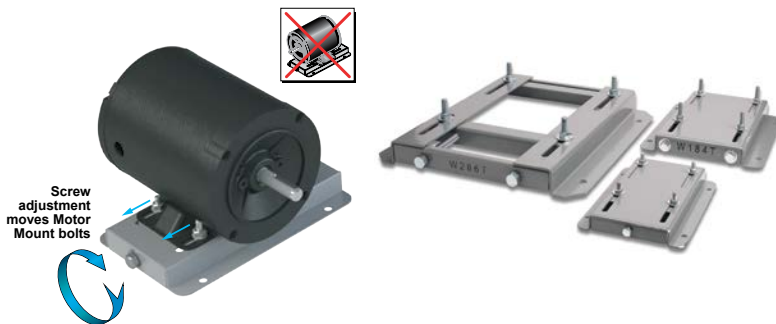
Motor Performance Data (460 Volt) *																
Part Number	HP	F.L. rpm	F.L. Amps @460V	N.L. Amps @460V	F.L. Torque (lb-ft)	B.D. Torque (lb-ft)	Max. C hp rpm *	Max. Safe rpm	F.L. Effic. (%)	F.L. Power Factor	Rotor Inertia (lb-ft <sup>2</sup> )	Ohms/Ph - Equiv. Wye Circuit (460 VAC) (at rated operating temp. in 40° C ambient)				
												R1	R2	X1	X2	XM
<a href="#">Y592</a>	1/4	1755	0.6	0.45	0.75	4.5	3540	5400	70.0	58.0	0.045	26.300	23.000	30.240	14.700	572.000
<a href="#">Y534</a>	1/2	1735	0.8	0.52	1.5	5.8	3510	5400	80.0	72.0	0.056	22.307	17.028	24.123	18.163	532.976
<a href="#">Y535</a>	1	1750	1.5	1.0	3.0	15.0	3505	5400	84.0	75.0	0.110	8.378	5.623	10.707	9.912	278.036
<a href="#">Y536</a>	1	1750	1.5	1.0	3.0	15.0	3505	5400	84.0	75.0	0.110	8.378	5.623	10.707	9.912	278.036
<a href="#">Y537</a>	1	1145	1.9	1.3	4.5	16.0	2260	5400	80.0	62.5	0.140	10.302	8.372	13.793	15.325	193.835
<a href="#">Y538</a>	1-1/2	1755	2.4	1.6	4.5	29.0	3518	5400	85.5	69.0	0.140	4.257	3.538	5.998	5.884	161.009
<a href="#">Y551</a>	2	1750	3.0	1.7	6.0	28.5	3525	5400	85.5	78.0	0.130	3.834	2.897	5.950	5.637	154.800

\* Maximum Constant hp rpm is for direct coupled loads.

# STABLE™ Motor Slide Bases

## Mounting Slide Bases for 56 to 449T NEMA Motors Features

- Allows adjustment of motor mounting position
- Slide direction is perpendicular to motor shaft
- Double adjusting screws for frames 182T-449T
- Manufactured to precise dimensional standards
- Dimensionally interchangeable with existing major makes
- Heavy-duty steel construction
- Painted with oven-baked primer for better adhesion of customer's paint
- All "D" bolts (motor mounting bolts) are fixed to the exact motor foot pattern
- All "D" bolts are welded into position to prevent spinning and dropping from slots
- Nuts and washers are provided for securing the motor to the slide base



### STABLE Motor Slide Bases for 3-Phase Motors

Part Number (MTA-BASE-xxx)	Price	Fits Frame Type	Product Wt. (lb)	Fits Motor					Drawing Links		
				IronHorse	Leeson®	WEG (Part number ending in...)	Marathon				
					WashGuard®		microMAX, Max +, Black Max, Blue Max, SyMAX	XRI GP & NEMA Premium, Jet Pump		Globetrotter	
<b>W56</b>	\$18.50	56*	2.8	MTPM-P3x-1x18							
				MTPM-P5x-1x18							
				MTPM-P7x-1x18							
				MTPM-0xx-1x18							
				MTPM-1xx-1x18							
				MTR(2)(P)-xxx-xxxxx*							
				MTRJ(P)-xxx-xxxxx							
				MTSN-P33-3BD18							
				<u>MTSN-P33-3BD18R</u>							
				MTSN-P33-3BD36	112427.00						
				<u>MTSP-P33-3BD18</u>	112428.00						
				MTSP-P33-3BD18R	112429.00						
				<u>MTSP-P33-3BD36</u>	112430.00						
				MTSP-P33-3BD36R	113019.00						
				<u>MTSN-P50-3BD18</u>	113023.00						
				MTSN-P50-3BD18R	113473.00						
				<u>MTSN-P50-3BD36</u>	113586.00						
				MTSP-P50-3BD12	113590.00						
				<u>MTSP-P50-3BD18</u>	113591.00				Y500		
				MTSP-P50-3BD18R	113649.00				Y502		
				<u>MTSP-P50-3BD36</u>	116644.00				Y360		
				MTSP-P50-3BD36R	116645.00				Y362		
				<u>MTSN-P75-3BD18</u>	119468.00				Y364		
				MTSN-P75-3BD18R	119469.00				Y280		
				<u>MTSN-P75-3BD36</u>	119471.00				Y281	G582	
				MTSP-P75-3BD12	119475.00			(...)56-S	Y282	K721A	
				<u>MTSP-P75-3BD18</u>	119476.00			(...)56C-S		J066A	
				MTSP-P75-3BD18R	119478.00				Y592(-A772)		
				<u>MTSP-P75-3BD36</u>	119480.00				Y534(-A772)		
				MTSP-P75-3BD36R	119482.00				Y535(-A772)		
				<u>MTSN-001-3BD18</u>	119483.00				SY001		
				MTSN-001-3BD18R	191202.00				SY003		
				<u>MTSN-001-3BD36</u>	191204.00				SY004		
				MTSP-001-3BD18	191205.00				SY005		
				<u>MTSP-001-3BD18R</u>	191206.00						
				MTSP-001-3BD36	191207.00						
				<u>MTSP-001-3BD36R</u>	191208.00						
				MTSN-1P5-3BD18	191560.00						
				<u>MTSN-1P5-3BD18R</u>	191561.00						
				MTSN-1P5-3BD36	191562.00						
<u>MTSP-1P5-3BD18</u>	191563.00										
MTSP-1P5-3BD18R	191569.00										
<u>MTSP-1P5-3BD36</u>											
MTSP-1P5-3BD36R											
<u>MTSN-002-3BD18</u>											
MTSN-002-3BD18R											
<u>MTSN-002-3BD36</u>											
MTSP-002-3BD18											
<u>MTSP-002-3BD18R</u>											
MTSP-002-3BD36											
<u>MTSP-002-3BD36R</u>											

\* IronHorse MTR2 56HC motors have double-punched bases to fit on slide base MTA-BASE-W56.

# STABLE™ Motor Slide Bases

STABLE Motor Slide Bases for 3-Phase Motors										
Part Number (MTA-BASE- xxx)	Price	Fits Frame Type	Product Wt. (lb)	Fits Motor						Drawing Links
				IronHorse	Leeson®	WEG (Part number ending in...)	Marathon			
					WashGuard®		microMAX, Max+, Black Max, Blue Max, SyMAX	XRI GP & NEMA Premium, Jet Pump	Globetrotter	
<a href="#">W143T</a>	\$32.50	143T/ TC	4.6	MTCP2-001-3BD18(C) MTCP2-1P5-3BD36 MTSN-1P5-3BD36-14 MTSP-1P5-3BD36-14 MTSP-1P5-3BD36R-14	<a href="#">191487.00</a> <a href="#">191565.00</a>		<a href="#">Y536(-A772)</a>	<a href="#">E2001A</a>	-	<a href="#">PDF</a>
<a href="#">W145T</a>	\$32.50	145T/ TC	5.1	MTCP2-001-3BD12 MTCP2-1P5-3BD18(C) MTCP2-002-3BD18(C) MTCP2-002-3BD36 MTSP-001-3BD12 MTSN-1P5-3BD18-14 MTSN-1P5-3BD18R-14 MTSP-1P5-3BD18-14 MTSP-1P5-3BD18R-14 MTSN-002-3BD18-14 MTSN-002-3BD18R-14 MTSN-002-3BD36-14 MTSP-002-3BD18-14 MTSP-002-3BD18R-14 MTSP-002-3BD36-14 MTSP-002-3BD36R-14	<a href="#">121866.00</a> <a href="#">121868.00</a> <a href="#">121870.00</a> <a href="#">122182.00</a> <a href="#">122184.00</a> <a href="#">122185.00</a> <a href="#">191490.00</a> <a href="#">191491.00</a> <a href="#">191570.00</a>	(...) <a href="#">145T-S</a> (...) <a href="#">145TC-S</a>	<a href="#">Y366</a> <a href="#">Y368</a> <a href="#">Y284</a> <a href="#">Y285</a> <a href="#">Y537</a> <a href="#">Y538(-A772)</a> <a href="#">Y551(-A772)</a>	<a href="#">E2002</a> <a href="#">E2004A</a> <a href="#">E2007A</a>	-	<a href="#">PDF</a>
<a href="#">W182T</a>	\$44.00	182T/ TC	9.2	MTCP2-1P5-3BD12 MTCP2-003-3BD18(C) MTCP2-003-3BD36 MTSP-1P5-3BD12 MTSN-003-3BD18-18 MTSN-003-3BD36-18 MTSP-003-3BD18-18 MTSP-003-3BD36-18			<a href="#">Y1999</a> <a href="#">Y286A</a> <a href="#">Y541A(-A772)</a>	-	<a href="#">GT0010A</a> <a href="#">GT1010A</a>	<a href="#">PDF</a>
<a href="#">W184T</a>	\$44.00	184T/ TC	10	MTCP2-002-3BD12 MTCP2-005-3BD18(C) MTCP2-005-3BD36 MTF-00x-1C18 MTSP-002-3BD12 MTSP-005-3BD18 MTSP-005-3BD36	<a href="#">132200.00</a> <a href="#">132440.00</a>		<a href="#">Y1372</a> <a href="#">Y540(-A772)</a> <a href="#">Y543A(-A772)</a> <a href="#">SY067</a>	-	<a href="#">GT0013A</a> <a href="#">GT1013A</a> <a href="#">GT1210A</a> <a href="#">GT1212A</a> <a href="#">GT1213A</a>	<a href="#">PDF</a>
<a href="#">W213T</a>	\$64.00	213T/ TC	13	MTCP2-003-3BD12 MTCP2-7P5-3BD18(C) MTCP2-7P5-3BD36 MTSP-003-3BD12 MTSP-7P5-3BD18	<a href="#">140819.00</a> <a href="#">140822.00</a> <a href="#">141266.00</a>		<a href="#">Y994</a> <a href="#">Y542(-A772)</a> <a href="#">Y545(-A772)</a> <a href="#">SY068</a>	-	<a href="#">GT0016A</a> <a href="#">GT1016A</a> <a href="#">GT1216A</a>	<a href="#">PDF</a>
<a href="#">W215T</a>	\$64.00	215T/ TC	15	MTCP2-005-3BD12 MTCP2-010-3BD18(C) MTCP2-010-3BD36 MTSP-005-3BD12 MTSP-010-3BD18	<a href="#">140820.00</a> <a href="#">140821.00</a>		<a href="#">Y996</a> <a href="#">Y544(-A772)</a> <a href="#">Y547(-A772)</a> <a href="#">SY069</a>	-	<a href="#">GT0019A</a> <a href="#">GT1019A</a> <a href="#">GT1218A</a> <a href="#">GT1219A</a>	<a href="#">PDF</a>
<a href="#">W254T</a>	\$86.00	254T/ TC	18	MTCP2-7P5-3BD12 MTCP2-015-3BD18(C) MTCP2-015-3BD36 MTSP-015-3BD18	-		<a href="#">Y546(-A772)</a> <a href="#">Y549(-A772)</a>	-	<a href="#">GT0059</a> <a href="#">GT1022A</a> <a href="#">GT1222A</a>	<a href="#">PDF</a>
<a href="#">W256T</a>	\$86.00	256T/ TC	19	MTCP2-010-3BD12 MTCP2-020-3BD18(C) MTCP2-020-3BD36 MTSP-020-3BD18	-		<a href="#">Y548(-A772)</a>	-	<a href="#">GT0062</a> <a href="#">GT1025A</a> <a href="#">GT1225A</a>	<a href="#">PDF</a>
<a href="#">W284T</a>	\$96.00	284T/ TC	20	MTCP2-015-3BD12 MTCP2-025-3BD18(C)	-		-	-	<a href="#">GT0065</a> <a href="#">GT1028A</a>	<a href="#">PDF</a>
<a href="#">W286T</a>	\$96.00	286T/ TC	21	MTCP2-020-3BD12 MTCP2-030-3BD18(C)	-		-	-	<a href="#">GT0067</a> <a href="#">GT1031A</a>	<a href="#">PDF</a>

\* IronHorse MTR2 56HC motors have double-punched bases to fit on slide base MTA-BASE-W56.

# STABLE™ Motor Slide Bases

STABLE Motor Slide Bases for 3-Phase Motors										
Part Number (MTA-BASE- xxx)	Price	Fits Frame Type	Product Wt. (lb)	Fits Motor						Drawing Links
				IronHorse	Leeson®	WEG (Part number ending in...)	Marathon			
					WashGuard®		microMAX, Max+, Black Max, Blue Max, SyMAX	XRI GP & NEMA Premium, Jet Pump	Globetrotter	
<a href="#">W324T</a>	\$140.00	324T/ TC	30	<a href="#">MTCP2-040-3BD18(C)</a>	-		<a href="#">Y571(-A774)</a> <a href="#">Y513(-A775)</a>	-	<a href="#">GT0073</a> <a href="#">GT1034A</a>	<a href="#">PDF</a>
<a href="#">W326T</a>	\$140.00	326T/ TC	31	<a href="#">MTCP2-050-3BD18(C)</a>	-		<a href="#">Y572(-A774)</a> <a href="#">Y514(-A775)</a>	-	<a href="#">GT0077</a> <a href="#">GT1037A</a>	<a href="#">PDF</a>
<a href="#">W364T</a>	\$190.00	364T/ TC	43	<a href="#">MTCP2-060-3BD18(C)</a>	-		<a href="#">Y573(-A774)</a> <a href="#">Y515(-A775)</a>	-	<a href="#">GT1040A</a>	<a href="#">PDF</a>
<a href="#">W365T</a>	\$190.00	365T/ TC	43	<a href="#">MTCP2-075-3BD18(C)</a>	-		<a href="#">Y574(-A774)</a> <a href="#">Y516(-A775)</a>	-	<a href="#">GT1043A</a>	<a href="#">PDF</a>
<a href="#">W404T</a>	\$232.00	404T/ TC	58	-	-		-	-	-	<a href="#">PDF</a>
<a href="#">W405T</a>	\$232.00	405T/ TC	60	<a href="#">MTCP2-100-3BD18(C)</a>	-		<a href="#">Y575(-A774)</a> <a href="#">Y517(-A775)</a>	-	<a href="#">GT1046A</a>	<a href="#">PDF</a>
<a href="#">W444T</a>	\$264.00	444T	63	<a href="#">MTCP2-125-3BD18</a>	-		-	-	-	<a href="#">PDF</a>
<a href="#">W445T</a>	\$264.00	445T	65	<a href="#">MTCP2-150-3BD18</a>	-		-	-	-	<a href="#">PDF</a>
<a href="#">W447T</a>	\$347.00	447T	89	<a href="#">MTCP2-200-3BD18</a>	-		-	-	-	<a href="#">PDF</a>
<a href="#">W449T</a>	\$347.00	449T	94	<a href="#">MTCP2-250-3D18</a> <a href="#">MTCP2-300-3D18</a>	-		-	-	-	<a href="#">PDF</a>

\* IronHorse MTR2 56HC motors have double-punched bases to fit on slide base [MTA-BASE-W56](#).

# STABLE™ Motor Slide Bases

## Mounting Slide Bases for 56 to 215T NEMA Motors Features

STABLE Motor Slide Bases for 1-phase Motors									
Part Number	Price	Fits Frame Type	Product Wt. (lb)	Fits Motor					
				IronHorse	Leeson®		Marathon		
					Washguard®	Marathon DP GP (NEMA Service Factor)	Marathon DP Air Compressor	Fan & Blower	Marathon TE GP 4-in-1
<a href="#"><u>MTA-BASE-W56</u></a>	\$18.50	56*	2.8	MTR2-xxx-1AB18 MTR2-xxx-1AB36 MTPM-xxx-1L18 MTPM-xxx-1M18	112431.00	G915A C167A C187A E261A E268A	D010	C216	G570
					112527.00			C1153	D311
					112528.00			C1155	G571
					112529.00			B319	D312
					113583.00			D118	G572
					114311.00			C1158	D313
					114313.00			C235	G573
					114317.00			D115	D314
					191475.00			C1160	G574
					191477.00			C1161	D315
		B352	G575						
			D316						
<a href="#"><u>MTA-BASE-W143T</u></a>	\$32.50	143T / TC	4.6	-	-	C188A	-	-	-
<a href="#"><u>MTA-BASE-W145T</u></a>	\$32.50	145TC / TC	5.1	-	-	I127	-	-	-
<a href="#"><u>MTA-BASE-W182T</u></a>	\$44.00	182T / TC	9.2	-	-	-	-	-	-
<a href="#"><u>MTA-BASE-W184T</u></a>	\$44.00	184 / TC	10	MTF-00x-1C18	-	-	-	-	-
<a href="#"><u>MTA-BASE-W213T</u></a>	\$64.00	213T / TC	13	-	-	-	-	-	-
<a href="#"><u>MTA-BASE-W215T</u></a>	\$64.00	215T T TC	15	-	-	-	-	-	-

\* IronHorse MTR2 56HC motors have double-punched bases to fit on slide base [MTA-BASE-W56](#).