



AC Inverter-Duty Motors

1000:1 Constant Torque (TENV), 20:1 Constant Torque (TEFC)



Features

- Constant torque operation from 0 to base speed (TENV ratings)
- Constant torque operation from 1/20 speed to base speed (TEFC ratings)
- Constant horsepower to twice base speed (RPM)
- Class H insulation with CR200 (corona-resistant) magnet wire
- Continuous duty at 40°C ambient
- C-Face with rigid base, except C-Face with removable rigid base as noted
- Service Factor: 1.0
- Utilizes double shielded ball bearings
- Exxon Polyrex® EM bearing grease
- Eliminates brush and commutator maintenance
- Electrically reversible
- UL Recognized, CSA Certified, and CE Mark
- Three year warranty

Applications

- Replaces 90 volt and 180 volt PMDC motors (when used with AC variable frequency drives)
- Typical uses include: machine tools, conveyors, packaging machines, batching machines, printing equipment, pumps and fans.

Motor Shipping Schedule *

Same or one day * Up to 7 days Up to 10 days

Color indicates shipping lead time in business days. Check stock status online.

* Certain heavy and oversized items can be shipped only via LTL. Check our website for current shipping method constraints by part number.

Motor Specifications

Part Number *	Price	HP	Base RPM	Volts	Encl.	NEMA Frame	Model No.	F.L. Amps	Weight (lb) *	Footnotes	Drawing Links		
Y500	\$316.00	1/4	1800	230	TENV	56C	56H17T2011	1.0	17	Q	PDF		
Y502	\$339.00	1/3					56H17T2013A	1.2	17	Q	PDF		
Y360	\$400.00	1/2					230/460	TEFC	56H17T2017	1.8 / 0.9	25	-	PDF
Y362	\$493.00	3/4							56H17F2017A	2.8 / 1.4	25	-	PDF
Y364	\$555.00	1		145TC	TENV	145THTR5329AA	4.8 / 2.4	45	6	PDF			
Y366	\$690.00	1-1/2			TEFC	145THFR5329	5.8 / 2.9	45	6	PDF			
Y368	\$915.00	2											

* Refer to the Motor Shipping Schedule table for shipping information.

Certain heavy and oversized items can be shipped only via LTL. Check our web site for current shipping method constraints by part number.

† Detailed information on the previous versions of these motors ([Y999](#) & [Y372](#)) can be found at www.AutomationDirect.com/Retired-Products.

Footnotes: Q = "Quick Connect" terminal board (1/4-in female spade lug) 6 = Bolt-on, removable base for footless mounting option

Note: Please review the AutomationDirect Terms & Conditions for warranty and service on this product.

Performance Data (460 Volt except as indicated)

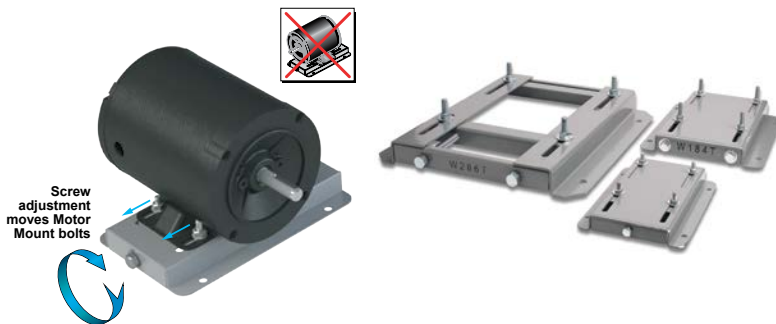
Part Number	HP	NEMA Design	F.L. RPM	Min. RPM	F.L. AMPS @460V	N.L. AMPS @460V	F.L. Torque (lb-ft)	B.D. Torque (lb-ft)	Max. CHP RPM*	Max. Safe RPM	F.L. Effic.	F.L. Power Factor	Rotor Inertia (lb-ft ²)
Y500	1/4 (230V)	B	1725	1.8	1.0 (230V)	0.7 (230V)	0.75	3.7	3520	5400	72.0	65.0	0.040
Y502	1/3 (230V)	A	1725	0	1.2 (230V)	0.9 (230V)	1.0	4.5	3450	5400	74.0	67.0	0.045
Y360	1/2	B	1725	1.8	0.9	0.5	1.5	6.8	3520	5400	80.0	72.0	0.075
Y362	3/4	A	1725	90	1.4	1.0	2.3	9.5	3520	4000	75.5	70.5	0.055
Y364	1	B	1725	90	1.6	0.9	3.0	12.0	3520	4000	78.5	77.5	0.090
Y366	1-1/2	A	1755	0	2.4	1.6	4.5	29.0	3500	5400	85.5	69.0	0.140
Y368	2	B	1740	90	2.9	1.6	6.0	29.0	3530	4000	82.5	77.0	0.140

* Maximum Constant HP RPM is for direct-coupled loads.

STABLE™ Motor Slide Bases

Mounting Slide Bases for 56 to 449T NEMA Motors Features

- Allows adjustment of motor mounting position
- Slide direction is perpendicular to motor shaft
- Double adjusting screws for frames 182T-449T
- Manufactured to precise dimensional standards
- Dimensionally interchangeable with existing major makes
- Heavy-duty steel construction
- Painted with oven-baked primer for better adhesion of customer's paint
- All "D" bolts (motor mounting bolts) are fixed to the exact motor foot pattern
- All "D" bolts are welded into position to prevent spinning and dropping from slots
- Nuts and washers are provided for securing the motor to the slide base



STABLE Motor Slide Bases for 3-Phase Motors

Part Number (MTA-BASE-xxx)	Price	Fits Frame Type	Product Wt. (lb)	Fits Motor					Drawing Links		
				IronHorse	Leeson®	WEG (Part number ending in...)	Marathon				
					WashGuard®		microMAX, Max +, Black Max, Blue Max, SyMAX	XRI GP & NEMA Premium, Jet Pump		Globetrotter	
W56	\$18.50	56*	2.8	MTPM-P3x-1x18							
				MTPM-P5x-1x18							
				MTPM-P7x-1x18							
				MTPM-0xx-1x18							
				MTPM-1xx-1x18							
				MTR(2)(P)-xxx-xxxxx*							
				MTRJ(P)-xxx-xxxxx							
				MTSN-P33-3BD18							
				<u>MTSN-P33-3BD18R</u>							
				MTSN-P33-3BD36	112427.00						
				<u>MTSP-P33-3BD18</u>	112428.00						
				MTSP-P33-3BD18R	112429.00						
				<u>MTSP-P33-3BD36</u>	112430.00						
				MTSP-P33-3BD36R	113019.00						
				<u>MTSN-P50-3BD18</u>	113023.00						
				MTSN-P50-3BD18R	113473.00						
				<u>MTSN-P50-3BD36</u>	113586.00						
				MTSP-P50-3BD12	113590.00						
				<u>MTSP-P50-3BD18</u>	113591.00				Y500		
				MTSP-P50-3BD18R	113649.00				Y502		
				<u>MTSP-P50-3BD36</u>	116644.00				Y360		
				MTSP-P50-3BD36R	116645.00				Y362		
				<u>MTSN-P75-3BD18</u>	119468.00				Y364		
				MTSN-P75-3BD18R	119469.00				Y280		
				<u>MTSN-P75-3BD36</u>	119471.00				Y281	G582	
				MTSP-P75-3BD12	119475.00			(...)56-S	Y282	K721A	
				<u>MTSP-P75-3BD18</u>	119476.00			(...)56C-S		J066A	
				MTSP-P75-3BD18R	119478.00				Y592(-A772)		
				<u>MTSP-P75-3BD36</u>	119480.00				Y534(-A772)		
				MTSP-P75-3BD36R	119482.00				Y535(-A772)		
				<u>MTSN-001-3BD18</u>	119483.00				SY001		
				MTSN-001-3BD18R	191202.00				SY003		
				<u>MTSN-001-3BD36</u>	191204.00				SY004		
				MTSP-001-3BD18	191205.00				SY005		
				<u>MTSP-001-3BD18R</u>	191206.00						
				MTSP-001-3BD36	191207.00						
				<u>MTSP-001-3BD36R</u>	191208.00						
				MTSN-1P5-3BD18	191560.00						
				<u>MTSN-1P5-3BD18R</u>	191561.00						
				MTSN-1P5-3BD36	191562.00						
<u>MTSP-1P5-3BD18</u>	191563.00										
MTSP-1P5-3BD18R	191569.00										
<u>MTSP-1P5-3BD36</u>											
MTSP-1P5-3BD36R											
<u>MTSN-002-3BD18</u>											
MTSN-002-3BD18R											
<u>MTSN-002-3BD36</u>											
MTSP-002-3BD18											
<u>MTSP-002-3BD18R</u>											
MTSP-002-3BD36											
<u>MTSP-002-3BD36R</u>											

* IronHorse MTR2 56HC motors have double-punched bases to fit on slide base MTA-BASE-W56.

STABLE™ Motor Slide Bases

STABLE Motor Slide Bases for 3-Phase Motors										
Part Number (MTA-BASE- xxx)	Price	Fits Frame Type	Product Wt. (lb)	Fits Motor						Drawing Links
				IronHorse	Leeson®	WEG (Part number ending in...)	Marathon			
					WashGuard®		microMAX, Max+, Black Max, Blue Max, SyMAX	XRI GP & NEMA Premium, Jet Pump	Globetrotter	
W143T	\$32.50	143T/ TC	4.6	MTCP2-001-3BD18(C) MTCP2-1P5-3BD36 MTSN-1P5-3BD36-14 MTSP-1P5-3BD36-14 MTSP-1P5-3BD36R-14	191487.00 191565.00		Y536(-A772)	E2001A	-	PDF
W145T	\$32.50	145T/ TC	5.1	MTCP2-001-3BD12 MTCP2-1P5-3BD18(C) MTCP2-002-3BD18(C) MTCP2-002-3BD36 MTSP-001-3BD12 MTSN-1P5-3BD18-14 MTSN-1P5-3BD18R-14 MTSP-1P5-3BD18-14 MTSP-1P5-3BD18R-14 MTSN-002-3BD18-14 MTSN-002-3BD18R-14 MTSN-002-3BD36-14 MTSP-002-3BD18-14 MTSP-002-3BD18R-14 MTSP-002-3BD36-14 MTSP-002-3BD36R-14	121866.00 121868.00 121870.00 122182.00 122184.00 122185.00 191490.00 191491.00 191570.00	(...)145T-S (...)145TC-S	Y366 Y368 Y284 Y285 Y537 Y538(-A772) Y551(-A772)	E2002 E2004A E2007A	-	PDF
W182T	\$44.00	182T/ TC	9.2	MTCP2-1P5-3BD12 MTCP2-003-3BD18(C) MTCP2-003-3BD36 MTSP-1P5-3BD12 MTSN-003-3BD18-18 MTSN-003-3BD36-18 MTSP-003-3BD18-18 MTSP-003-3BD36-18			Y1999 Y286A Y541A(-A772)	-	GT0010A GT1010A	PDF
W184T	\$44.00	184T/ TC	10	MTCP2-002-3BD12 MTCP2-005-3BD18(C) MTCP2-005-3BD36 MTF-00x-1C18 MTSP-002-3BD12 MTSP-005-3BD18 MTSP-005-3BD36	132200.00 132440.00		Y1372 Y540(-A772) Y543A(-A772) SY067	-	GT0013A GT1013A GT1210A GT1212A GT1213A	PDF
W213T	\$64.00	213T/ TC	13	MTCP2-003-3BD12 MTCP2-7P5-3BD18(C) MTCP2-7P5-3BD36 MTSP-003-3BD12 MTSP-7P5-3BD18	140819.00 140822.00 141266.00		Y994 Y542(-A772) Y545(-A772) SY068	-	GT0016A GT1016A GT1216A	PDF
W215T	\$64.00	215T/ TC	15	MTCP2-005-3BD12 MTCP2-010-3BD18(C) MTCP2-010-3BD36 MTSP-005-3BD12 MTSP-010-3BD18	140820.00 140821.00		Y996 Y544(-A772) Y547(-A772) SY069	-	GT0019A GT1019A GT1218A GT1219A	PDF
W254T	\$86.00	254T/ TC	18	MTCP2-7P5-3BD12 MTCP2-015-3BD18(C) MTCP2-015-3BD36 MTSP-015-3BD18	-		Y546(-A772) Y549(-A772)	-	GT0059 GT1022A GT1222A	PDF
W256T	\$86.00	256T/ TC	19	MTCP2-010-3BD12 MTCP2-020-3BD18(C) MTCP2-020-3BD36 MTSP-020-3BD18	-		Y548(-A772)	-	GT0062 GT1025A GT1225A	PDF
W284T	\$96.00	284T/ TC	20	MTCP2-015-3BD12 MTCP2-025-3BD18(C)	-		-	-	GT0065 GT1028A	PDF
W286T	\$96.00	286T/ TC	21	MTCP2-020-3BD12 MTCP2-030-3BD18(C)	-		-	-	GT0067 GT1031A	PDF

* IronHorse MTR2 56HC motors have double-punched bases to fit on slide base MTA-BASE-W56.

STABLE™ Motor Slide Bases

STABLE Motor Slide Bases for 3-Phase Motors										
Part Number (MTA-BASE- xxx)	Price	Fits Frame Type	Product Wt. (lb)	Fits Motor						Drawing Links
				IronHorse	Leeson®	WEG (Part number ending in...)	Marathon			
					WashGuard®		microMAX, Max+, Black Max, Blue Max, SyMAX	XRI GP & NEMA Premium, Jet Pump	Globetrotter	
W324T	\$140.00	324T/ TC	30	MTCP2-040-3BD18(C)	-		Y571(-A774) Y513(-A775)	-	GT0073 GT1034A	PDF
W326T	\$140.00	326T/ TC	31	MTCP2-050-3BD18(C)	-		Y572(-A774) Y514(-A775)	-	GT0077 GT1037A	PDF
W364T	\$190.00	364T/ TC	43	MTCP2-060-3BD18(C)	-		Y573(-A774) Y515(-A775)	-	GT1040A	PDF
W365T	\$190.00	365T/ TC	43	MTCP2-075-3BD18(C)	-		Y574(-A774) Y516(-A775)	-	GT1043A	PDF
W404T	\$232.00	404T/ TC	58	-	-		-	-	-	PDF
W405T	\$232.00	405T/ TC	60	MTCP2-100-3BD18(C)	-		Y575(-A774) Y517(-A775)	-	GT1046A	PDF
W444T	\$264.00	444T	63	MTCP2-125-3BD18	-		-	-	-	PDF
W445T	\$264.00	445T	65	MTCP2-150-3BD18	-		-	-	-	PDF
W447T	\$347.00	447T	89	MTCP2-200-3BD18	-		-	-	-	PDF
W449T	\$347.00	449T	94	MTCP2-250-3D18 MTCP2-300-3D18	-		-	-	-	PDF

* IronHorse MTR2 56HC motors have double-punched bases to fit on slide base [MTA-BASE-W56](#).

STABLE™ Motor Slide Bases

Mounting Slide Bases for 56 to 215T NEMA Motors Features

STABLE Motor Slide Bases for 1-phase Motors									
Part Number	Price	Fits Frame Type	Product Wt. (lb)	Fits Motor					
				IronHorse	Leeson®		Marathon		
					Washguard®	Marathon DP GP (NEMA Service Factor)	Marathon DP Air Compressor	Fan & Blower	Marathon TE GP 4-in-1
<u>MTA-BASE-W56</u>	\$18.50	56*	2.8	MTR2-xxx-1AB18 MTR2-xxx-1AB36 MTPM-xxx-1L18 MTPM-xxx-1M18	112431.00	G915A C167A C187A E261A E268A	D010	C216	G570
					112527.00			C1153	D311
					112528.00			C1155	G571
					112529.00			B319	D312
					113583.00			D118	G572
					114311.00			C1158	D313
					114313.00			C235	G573
					114317.00			D115	D314
					191475.00			C1160	G574
					191477.00			C1161	D315
		B352	G575						
			D316						
<u>MTA-BASE-W143T</u>	\$32.50	143T / TC	4.6	-	-	C188A	-	-	-
<u>MTA-BASE-W145T</u>	\$32.50	145TC / TC	5.1	-	-	I127	-	-	-
<u>MTA-BASE-W182T</u>	\$44.00	182T / TC	9.2	-	-	-	-	-	-
<u>MTA-BASE-W184T</u>	\$44.00	184 / TC	10	MTF-00x-1C18	-	-	-	-	-
<u>MTA-BASE-W213T</u>	\$64.00	213T / TC	13	-	-	-	-	-	-
<u>MTA-BASE-W215T</u>	\$64.00	215T T TC	15	-	-	-	-	-	-

* IronHorse MTR2 56HC motors have double-punched bases to fit on slide base [MTA-BASE-W56](#).