

Fan & Blower - Capacitor Start, Drip-proof Motors

Resilient Base



marathon[®]
Motors

Features

- Ball bearings
- Heavy gauge steel frame and base
- Service factor, as noted
- Capacitor start/capacitor run
- Thermal protection, as noted
- UL recognized and CSA certified

Applications

Typical uses include machine tools, conveyors, packaging machines, batching machines, food and beverage equipment, pumps, and fans.

Motor Shipping Schedule *

Same or one day * Up to 7 days Up to 10 days

Color indicates shipping lead time in business days. Check stock status online.

* Certain heavy and oversized items can be shipped only via LTL. Check our website for current shipping method constraints by part number.

Motor Specifications – Fan & Blower - Capacitor Start, One- and Two-Speed, Dripproof Motors

Part Number*	Price	HP	Base RPM	Volts	Service Factor	Encl.	NEMA Design	NEMA Frame	Model No.	Weight (lb)*	Notes	
G1115	\$143.00	1/4	1800	115 / 230	1.35	DP	N	48	5KC35JN7JX	16	Auto Overload	
C216	\$161.00	1/3	1800	115 / 208-230	1.35			56	5KC36LN1X	18		
C1152	\$144.00	1/2	3600	115 / 208-230	1.25			48	5KC39ON3220X	19		
C1153	\$228.00	1/2	1800	115 / 208-230	1.25			56	5KC49GN0022X	21		
C1155	\$178.00	3/4	3600	115 / 208-230	1.25				5KC38NN410X	17		
B319	\$240.00	3/4	1800	115 / 208-230	1.25				056C17D2074	23		
D118	\$221.00	1	3600	115 / 208-230	1.15				056C34D2106	25		
C1158	\$308.00	1	1800	115 / 208-230	1.15				5KC49PN0164X	29		
C235	\$254.00	1	1800	115 / 208-230	1.15				5KC49PN0155	31		No Overload
D115	\$306.00	1-1/2	3600	115 / 208-230	1.15				056B34D2027	28		
C1160	\$317.00	1-1/2	1800	115 / 208-230	1.15			56H	5KCR49SN0150X	35		Auto Overload
C1161	\$349.00	2	3600	115 / 208-230	1.2				5KCR49RN2148T	33		
B352	\$417.00	2	1800	115 / 208-230	1.15				056B17D5331	50		

* Refer to the Motor Shipping Schedule table for shipping information.

Certain heavy and oversized items can be shipped only via LTL. Check our website for current shipping method constraints by part number.

Note: Please review the AutomationDirect Terms & Conditions for warranty and service on this product. Warranty service can be arranged through numerous Marathon Electric service centers. See list of service centers on our website at www.automationdirect.com.

Fan & Blower - Capacitor Start, Drip-proof Motors

Resilient Base

Performance Data - Fan & Blower - Capacitor Start, One and Two-Speed, Drip-proof Motors											
Part Number	HP	F.L. RPM	Current @ 115V/230V (Amps)			Torque (lb-ft)			F.L. Effic. %	F.L. Power Factor	Rotor Inertia (lb-ft ²)
			No Load 230V	Full Load 115/230V	Locked Rotor	Full Load	Locked Rotor	Break-down			
G1115	1/4	1725	N/A*	5.2 / 2.6	24.8 / 12.4	0.76	2.91	2.13	52.5	58.0	N/A*
C216	1/3	1725	2.4	6.0 / 3.0	30.66 / 15.33	1.01	3.38	2.63	N/A*	N/A*	
C1152	1/2	3450	2.5	8.2 / 4.1	54.8 / 27.4	0.76	3.83	2.37			
C1153	1/2	1725	3.6	8.6 / 4.3	34.8 / 17.4	1.53	3.19	4.89			
C1155	3/4	3450	3.0	10.0 / 5.0	64 / 32	1.13	3.11	3.75			
B319	3/4	1725	3.2	10.0 / 5.0	N/A*	2.28	3.09	4.94	70.1	69.6	
D118	1	3450	3.8	12.0 / 6.0	44.2 / 22.1	3.04	4.69	8.20	72	76	
C1158	1	1725	5.3	14.7 / 7.4	71.8 / 35.9	3.04	4.69	8.20	N/A*	N/A*	
C235	1	1725	5.1	13.6 / 6.8	75.8 / 37.9	3.04	10.32	7.40			
D115	1-1/2	3450	1.6	13.0 / 6.5	83.6 / 41.8	2.25	3.63	5.20	95.8	N/A*	
C1160	1-1/2	1725	N/A*	16.4 / 8.2	N/A*	4.57	N/A*	N/A*			
C1161	2	3450	4.2	19.6 / 9.8	133 / 66.5	3.04	3.87	7.80			
B352	2	1725	5.4	21.0 / 10.5	131.8 / 65.9	6.03	19.50	15.70	78.6	78.3	

* Data not available from manufacturer

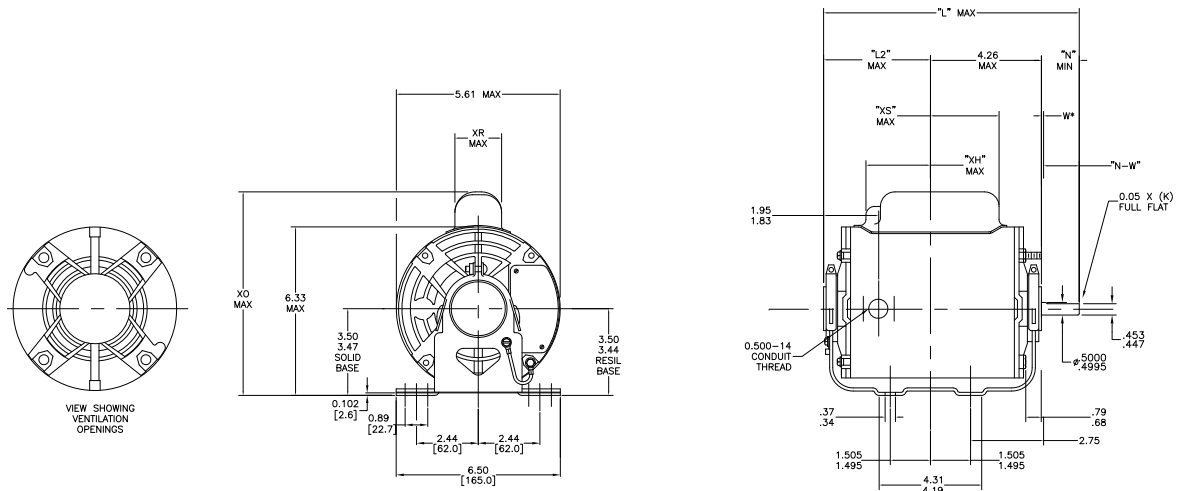
Dimensions

in [mm]

Resilient Base

Figure 1 - G1115

Motor Dimensions (inches)									
Part Number	L	L2	N	N-W	XH	XO	XR	XS	
G1115	9.57	4.77	1.50	1.63 / 1.41	2.59	7.31	1.60	1.97	



See our website: www.AutomationDirect.com for complete engineering drawings.

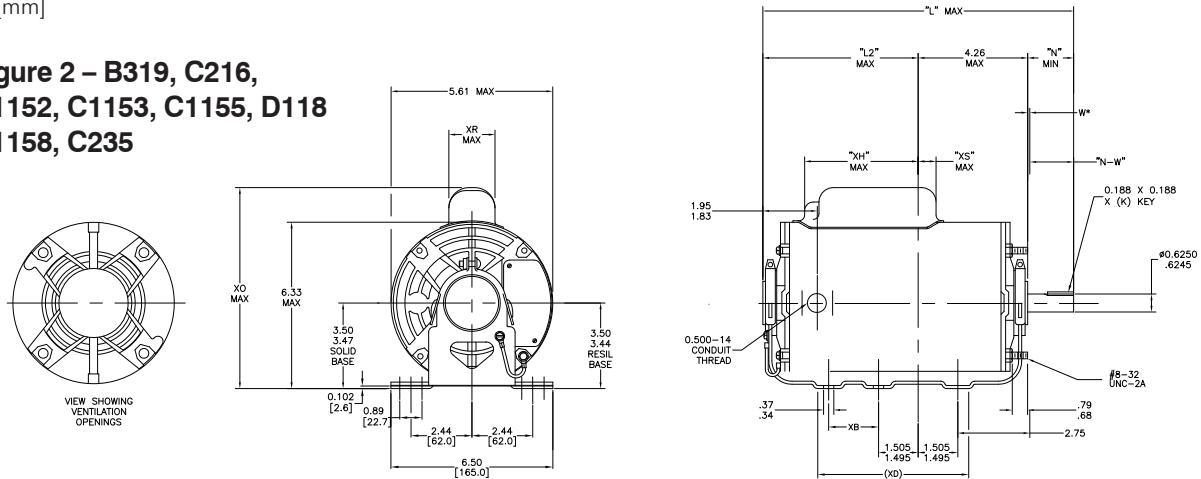
Fan & Blower - Capacitor Start, Drip-proof Motors

Dimensions

in [mm]

Resilient Base

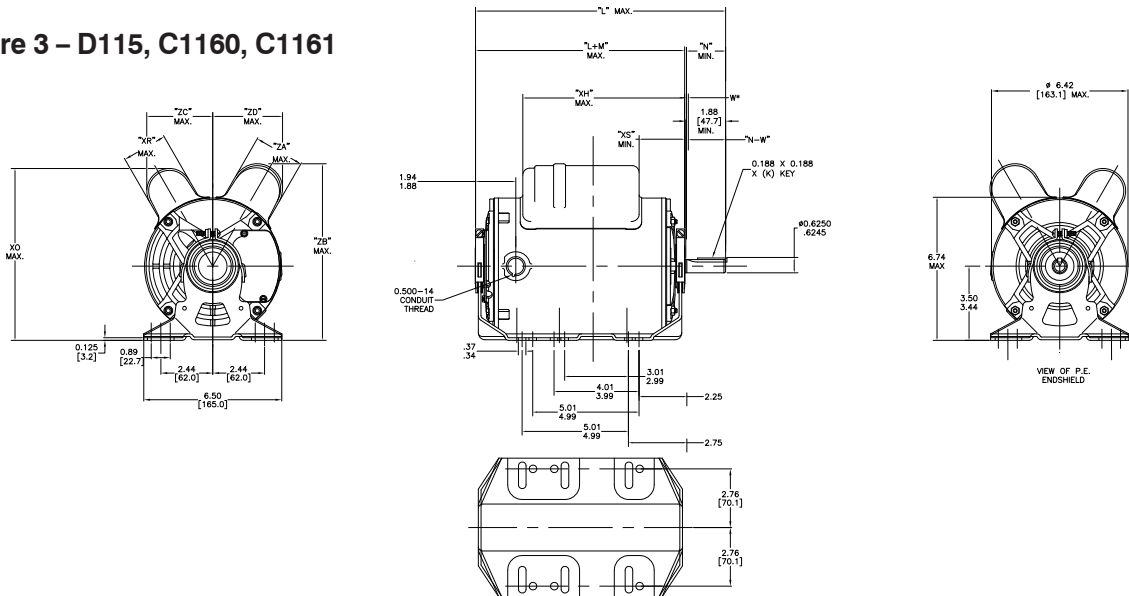
Figure 2 – B319, C216, C1152, C1153, C1155, D118, C1158, C235



Motor Dimensions (inches)								
Part Number	L	N	XB	XH	XO	XR	XS	K
B319	4.63	1.88	N/A*	3.88	7.85	1.60	2.70	1.38
C216	4.23	1.88		2.65	7.81		2.72	
C1152	5.65	1.50		4.02	7.31		1.75	1.16
C1153	4.22	N/A*		2.63	8.22		1.91	
C1155	5.23	1.88		3.65	7.88		2.12	
C1158	5.22	N/A*		2.63	8.22		2.12	
C235	5.22	N/A*	3.63	8.94	2.12	2.28		
D118	12.22	1.88	2.00	4.50	7.83		1.70	

Note: B319, C216, D1152, C1153, C1155, C1158 and C235 have a four-hole foot. XB dimension does not apply.
*Data not available from manufacturer.

Figure 3 – D115, C1160, C1161



Motor Dimensions (inches)										
Part Number	L	L+M	N	XH	XR	XS	ZA	ZB	ZC	ZD
D115	11.72	9.75	1.97	8.66	2.24	3.37	2.24	7.86	2.83	2.83
C1160 & C1161	11.91	10.01	1.97	7.76	2.15	2.01	1.60	7.81	3.20	3.07

See our website: www.AutomationDirect.com for complete engineering drawings.

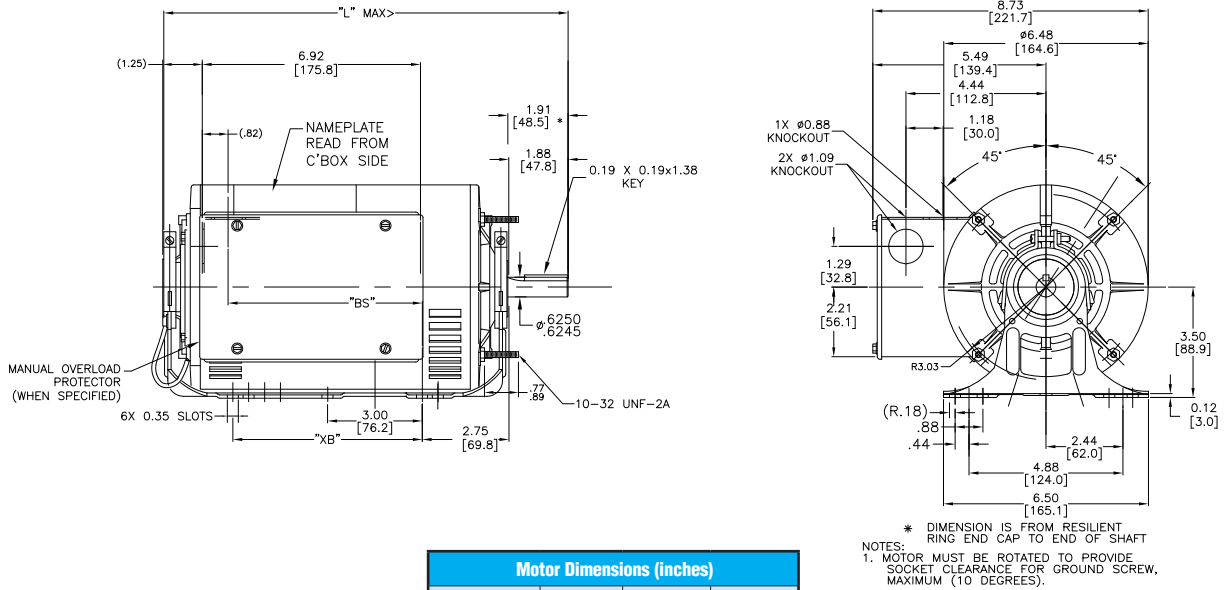
Fan & Blower - Capacitor Start, Drip-proof Motors

Dimensions

in [mm]

Resilient Base

Figure 4 - B352



See our website: www.AutomationDirect.com for complete engineering drawings.