

Air Compressor, Single-Phase, Drip-proof Motors



Rigid Base

Features

- Capacitor start/capacitor run design for low amps and high efficiency
- High starting and breakdown torque
- Heavy gauge steel frame and base
- Continuous duty at nameplate ratings
- Thermal protection, as noted
- UL recognized and CSA certified

Applications

- Typical uses include machine tools, conveyors, packaging machines, batching machines, food and beverage equipment, pumps, and fans

Motor Shipping Schedule *		
Same or one day *	Up to 7 days	Up to 10 days
Color indicates shipping lead time in business days. Check stock status online.		
* Certain heavy and oversized items can be shipped only via LTL. Check our website for current shipping method constraints by part number.		

Motor Specifications – Air Compressor, Single-Phase, Drip-proof Motors											
Part Number*	Price	HP	Base RPM	Volts	Service Factor	Encl.	NEMA Design	NEMA Frame	Model No.	Weight (lb)*	Notes
C169	\$237.00	1/2	1800	115 / 230	1.25	DP	N/A**	56	5KC49GN0010Y	21	Manual Overload
D010	\$262.00	1	3600	115 / 208-230	1.15		E	56	056B34D2029	23	Manual Overload
C704	\$254.00	1-1/2	3600	115 / 230			N/A**	56	5KC49PN2521Y	31	Manual Overload
Z502	\$530.00	3	1800	230			L	184T	184TBDR5326	51	No Overload
D017	\$628.00	5	3600	230			N/A**	56H	56B34D5302	55	Manual Overload
* Refer to the Motor Shipping Schedule table for shipping information. Certain heavy and oversized items can be shipped only via LTL. Check our website for current shipping method constraints by part number.											
** Data not available from manufacturer.											
Note: Please review the AutomationDirect Terms & Conditions for warranty and service on this product. Warranty service can be arranged through numerous Marathon Electric service centers. See list of service centers on our website at www.automationdirect.com .											

Air Compressor, Single-Phase, Drip-proof Motors

Rigid Base

Performance Data - Air Compressor, Single-Phase, Drip-proof Motors											
Part Number	HP	F.L. RPM	Current @ 115V/230V (Amps)			Torque (oz-ft)			F.L. Effic. %	F.L. Power Factor	Rotor Inertia (lb-ft ²)
			No Load 230V	Full Load 115/230V	Locked Rotor	Full Load	Locked Rotor	Break-down			
C169	1/2	1725	N/A*	8.8 / 4.4	46 / 23	24.4	89.8	68.2	60.9	N/A*	N/A*
D010	1	3450	3.2	10.6 / 5.3	74.6 / 37.3	23.9	56	65.7	72		
C704	1-1/2	3450	N/A*	21.3 / 10.6	N/A*	36.5	N/A*	N/A*	70		
Z502	3	1740	2.9	N/A / 12.1	83.6	144.8	387.2	318.4	82.5	96.5	
D017	5	3450	3.2	N/A / 20	135	121.8	220.8	316.8	84	98.6	

**Data not available from manufacturer.*

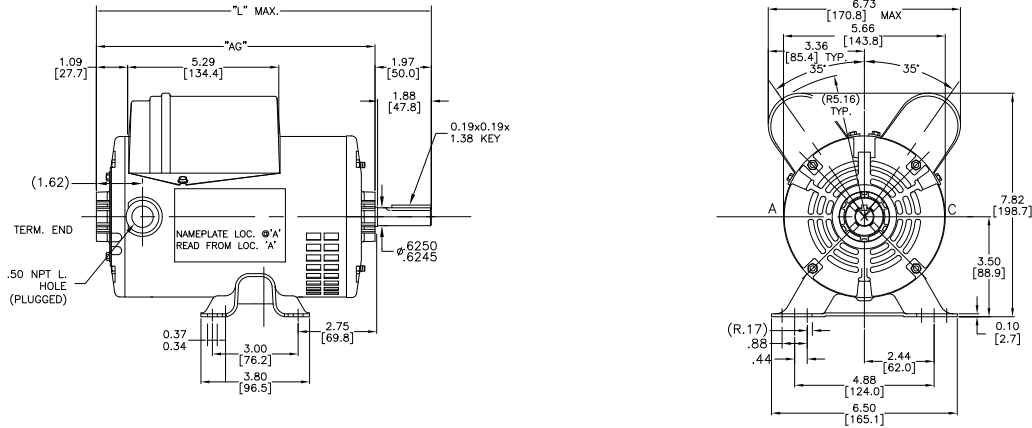
Air Compressor, Single-Phase, Drip-proof Motors

Dimensions

in [mm]

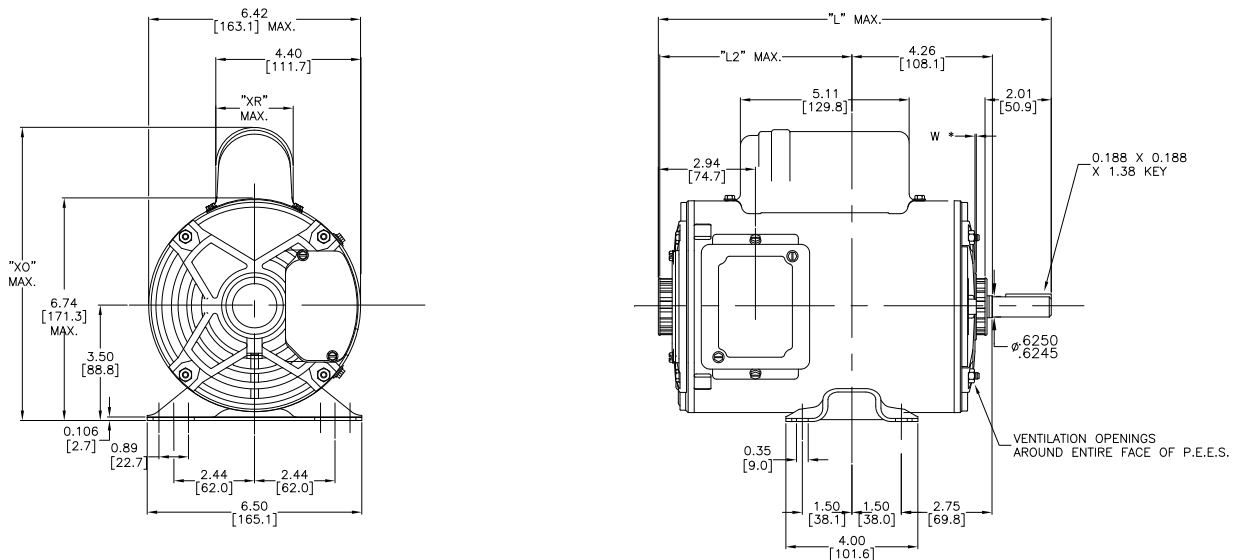
Rigid Base

Figure 1 – D010 Dimensions



Motor Dimensions (inches)		
Part Number	L	AG
D010	11.72	8.75

Figure 2 – C169, C704



Motor Dimensions (inches)				
Part Number	L	L2	X0	XR
C169	10.38	4.23 [107.44]	8.94	2.40
C704	11.91	5.75 [146.05]	8.63	2.10

See our website: www.AutomationDirect.com for complete engineering drawings.

Air Compressor, Single-Phase, Drip-proof Motors

Dimensions

in [mm]

Rigid Base

Figure 3 – Z502

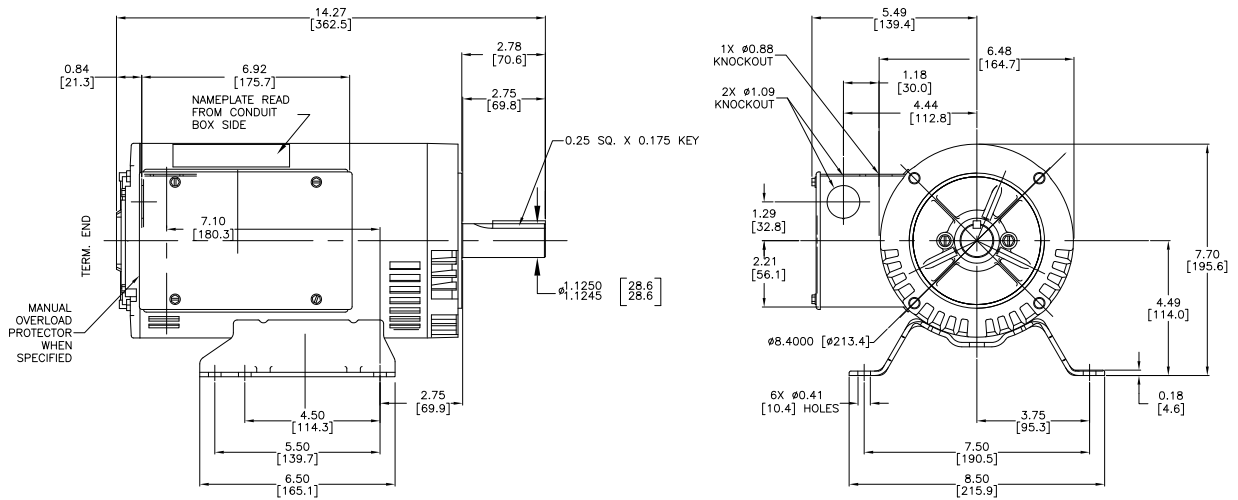
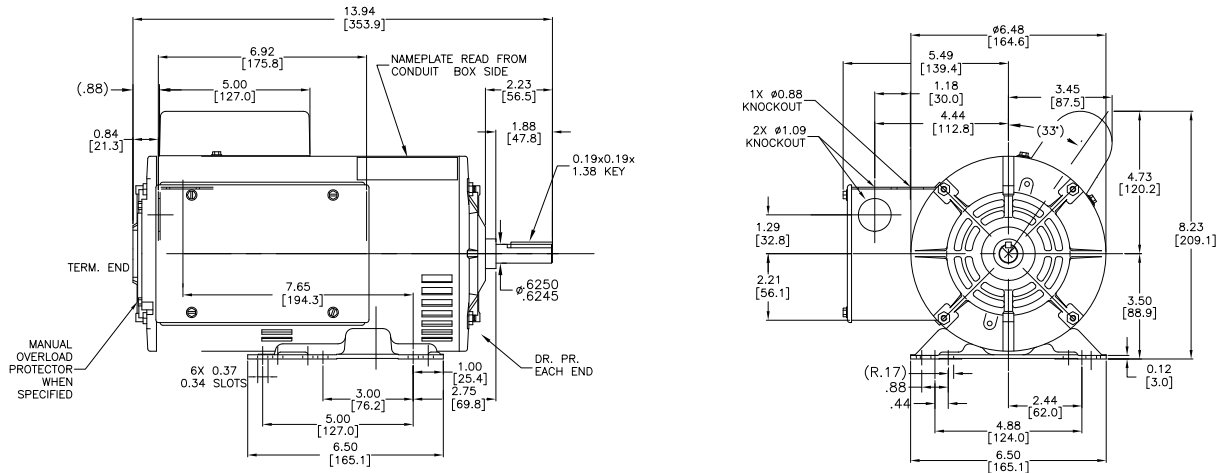


Figure 4 – D017



See our website: www.AutomationDirect.com for complete engineering drawings.