

## Features

- Available in 3A, 10A, 16A, 6B, 10B, 16B, 24B, and 32B sizes
- Heavy-duty metal housings in die-cast aluminum alloy with a polyester powder-coat finish or self-extinguishing thermoplastic housing
- Single locking system (one lever locked on two pegs) or double locking system (two levers locked on four pegs)
- Mechanical duration of 500 cycles
- Operating temperatures from -40 to +125 °C [-40 to +257 °F]
- IP65 degree of protection with enclosure when coupled
- Conforms with IEC 61984, VDE 0110, VDE 0627, and UL 1977 standards
- UL and CE approvals

## Housings

### Hoods

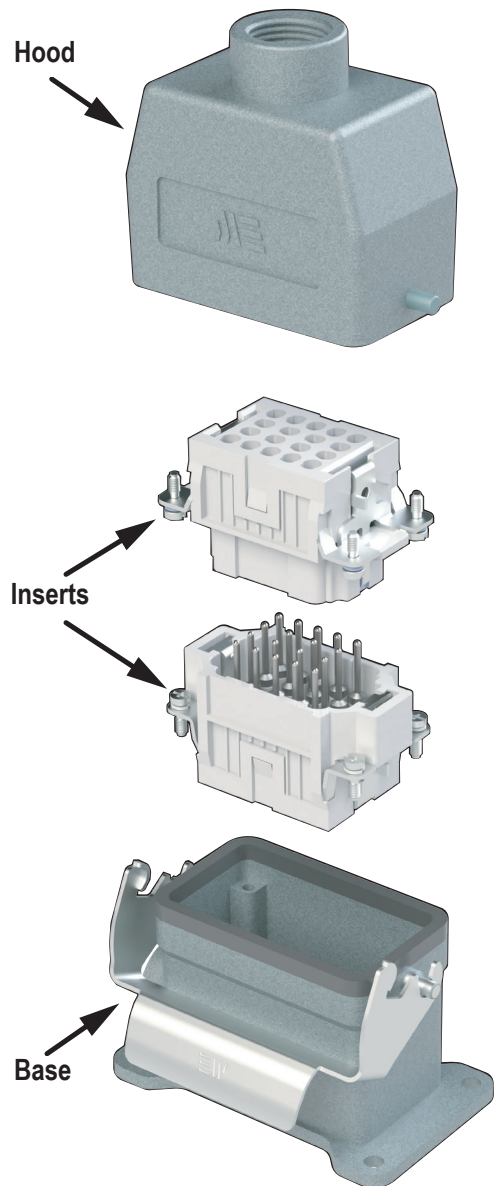
- Available with top entry and side entry cable passages
- Standard profiles
- Threaded cable passages with NPT threads
- Stainless steel or thermoplastic locking pegs

### Bases, Couplers, and Covers

- Surface- and bulkhead-mounted bases
- Seal gaskets made of anti-aging, oil-resistant and fuel-resistant vinyl nitrile elastomer
- Locking levers made of galvanized steel or self-extinguishing glass-filled thermoplastic; guarantees perfect closing and sealing

### Inserts

- Self-extinguishing thermoplastic reinforced with glass fibers
- Asymmetric guide rails prevent incorrect coupling
- Captive installation screws allow for easy and secure installation to bases and hoods
- Laser-printed or molded terminal/contact positions on both sides of insert
- Copper alloy contacts with hard silver-plating—available with stainless steel captive screw terminal or machined crimp contact
- Wide contact surface for ground terminals
- IP20 without enclosures
- Suitable for stranded and solid conductors



## Agency Approvals

- UL Recognized File Number E307105
- CE



To obtain the most current agency approval information, see the Agency Compliance & Certifications Checklist section on the specific part number's web page.

## General Characteristics

### Application Examples

- Electronic machinery
- Robots
- Control equipment
- Power connections
- Control and signal circuits
- Packaging machinery
- Theatrical applications
- Industrial equipment
- Electrical panels

### Inserts

METEcon multi-wire connectors require one male and one female insert. The inserts are available in multiple pole configurations from 2-poles plus ground up to 108-poles plus ground and with termination sizes ranging from 26 to 6 AWG, 10 to 80 Amps.

METEcon inserts are made of UL 94 V-0 self-extinguishing thermoplastic resin with a maximum temperature of 125 °C [257 °F]. The inserts are available in screw terminal and crimped contact block connections. The contacts are copper alloy with a hard silver-plating. The plastic insulators are numbered on both sides by laser printing or molding in accordance with EN 60068-2-70 (marking permanence standard).

- Suitable for use with alternating current (AC) or direct current (DC)
- Leading protective ground
- Polarized for correct mating
- Interchangeable for male and female inserts in hoods and bases
- Captive screws
- Exception: 3A has housing/hood specifically for female or for male

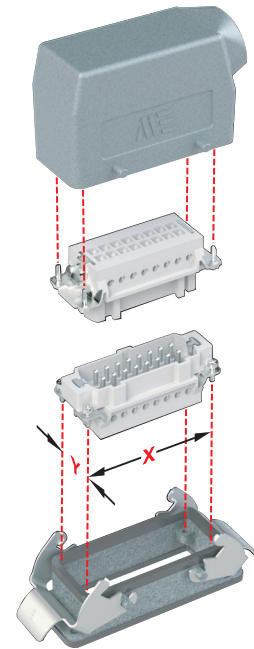
### Housings

The housings for the METEcon multi-wire connectors consist of a hood that mates with a base or a coupler.

They are made of die-cast aluminum with a polyester powder finish or from self-extinguishing thermoplastic and are suitable for use in industrial applications.

A single- or double-lever locking system assures coupling stability and protection against accidental opening. The locking system is comprised of stainless steel or glass-filled thermoplastic levers, with compatible interlocking pegs.

## Size and Identification



Size 16B

The size of each type of connector is determined by the distance between the center points of the four installation screws. These four points are common to both the insert and the housing. This is indicated by "X"-"Y" in the illustration above.

The table below lists the size identification and the actual X-Y distance for each type of connector offered.

Size	Distance X-Y
3A	21 x 21mm* [0.83 x 0.83in]
10A	49.5 x 16mm [1.95 x 0.63in]
16A	66 x 16mm [2.60 x 0.63in]
6B	44 x 27mm [1.73 x 1.06in]
10B	57 x 27mm [2.24 x 1.06in]
16B	77.5 x 27mm [3.05 x 1.06in]
24B	104 x 27mm [4.09 x 1.06in]
32B**	77.5 x 27mm [3.05 x 1.06in]

\* The center distance cannot be given because the 3A inserts have only one screw: 21 x 21 indicates the size of the sectioned insert.

\*\* Note: Size 32B requires 2 size 16B inserts.

## Conductor Termination

### Overview

Two types of conductor termination are available for METEcon inserts:

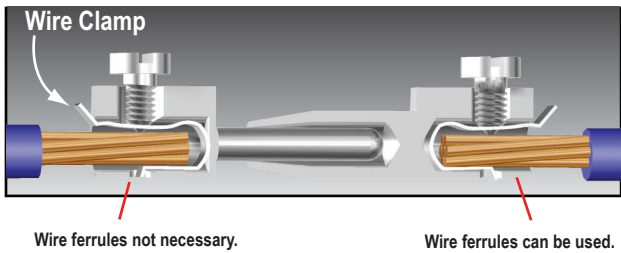
- Screw terminations
- Crimp terminations

### Screw Terminations

Screw terminations consist of contacts made of silver-plated copper alloy and are incorporated with a wire clamp (with the exception of the size 3A inserts and size 24B with 80A contacts) for firmly securing the conductors. The screw terminals use stainless steel captive screws and meet VDE 0609/EN 60999-1 standards.

Proper conductor installation requires no special preparation when using inserts with the wire clamp terminals (no wire ferrules). The table below lists the current rating, maximum wire gauge, and stripping lengths.

Current Rating	Max Wire Gauge		Stripping Length mm [in]
	mm <sup>2</sup>	AWG	
10A	2.5	14	7 [0.28]
16A	2.5	14	7 [0.28]
35A	6.0	10	7 [0.28]
16/80A	2.5/16	14/6	7.5 [0.3]/14 [0.55]



### Screw Terminals with Clamps

The value of tensile strength of conductors in accordance with the dimensions of the screws and the wires are shown in the following table:

Wire Gauge mm <sup>2</sup> [AWG]	1.5 [16]	2.5 [14]	4 [12]	6 [10]	10 [8]	16 [6]
Size of Screw	M3	M3	M3.5	M4	M4	M6
Tensile Strength of Stranded Wire (N)	40	50	60	80	90	100

Increasing the tightening torque does not necessarily improve the contact resistance. The screw torques are selected according to standard EN 60999-1, to provide excellent mechanical, thermal, and electrical behavior. The conductor or terminal may be damaged if the recommended values are significantly exceeded.

Insert Screw Specifications						
Insert Size	Screw Type	Screw Size	Tightening Torque N-m [in-lb]	Recommended Screwdriver Size	Recommended Screwdriver Part Number	
3A	10 Amp Terminal	M3	0.50 [4.4]	0.4 x 2.5	<a href="#">TW-SD-VSL-2</a>	
	Installation	M3				
	Ground	M3.5				
10A, 16A	16 Amp Terminal	M3	0.50 [4.4]	0.5 x 3.0	<a href="#">TW-SD-SL-1</a>	
	Installation	M3				
	Ground	M4				
6B, 10B	16 Amp Terminal	M3	0.50 [4.4]	Ph 0 - 0.8 x 4	<a href="#">TW-SD-VSL-3</a>	
	Installation	M3				
	Ground	M4		Ph 2 1.0 x 5.5	<a href="#">TW-SD-VSL-4</a>	
16B	35 Amp Terminal	M4	1.2 [10.6]	Ph 1 - 0.8 x 4	<a href="#">TW-SD-VSL-3</a>	
	16 Amp Terminal	M3				
	Installation	M3	0.50 [4.4]	Ph 0 - 0.8 x 4		
	Ground	M4	1.2 [10.6]	Ph 2 1.0 x 5.5		
24B	80 Amp Terminal	M6	1.5 mm <sup>2</sup> [16 AWG] 1.2 [10.6]	1.0 x 5.5	<a href="#">TW-SD-VSL-4</a>	
			2.5 mm <sup>2</sup> [14 AWG] 2 [17.7]			
			4-16 mm <sup>2</sup> [12-6 AWG] 3 [26.6]			
	16 Amp Terminal	M3	0.50 [4.4]	Ph 0 - 0.8 x 4		<a href="#">TW-SD-VSL-3</a>
	Installation					
Ground	M4	1.2 [10.6]	Ph 2 1.0 x 5.5	<a href="#">TW-SD-VSL-4</a>		
32B	35 Amp Terminal	M4	1.2 [10.6]	Ph 1 - 0.8 x 4	<a href="#">TW-SD-VSL-3</a>	
	16 Amp Terminal	M3				0.50 [4.4]
	Installation		M3			
	Ground	M4	1.2 [10.6]	Ph 2 1.0 x 5.5		<a href="#">TW-SD-VSL-4</a>

## Crimp Terminations

Crimp terminations consist of contacts made of silver-plated copper alloy. Crimp terminations are accomplished by applying a crimp contact to the conductor by means of a crimping tool. Crimp contacts are available in several sizes:

10 amp, 26–14 AWG; 16 amp, 26–12 AWG

A perfect crimp connection is gas-tight, corrosion-free, and is equal to a cold weld of the parts being connected. Wires to be connected must be carefully matched with the correct wire size of crimp contacts.

The requirements for crimp connectors are depicted in IEC 60352, part 2.

## Note: Low currents and voltages:

METEcon standard contacts (screw and crimp) have a silver-plated surface. This metal has excellent conductive properties. During the contact's lifetime, the silver surface generates a black oxide layer due to its affinity to sulfur (always present in the atmosphere). This layer is conductively smooth and very thin and is partly interrupted when the contacts are mated and non-mated, thus guaranteeing very low contact resistances. In the case of very low current or voltage, small changes to the transmitted signal may be encountered.



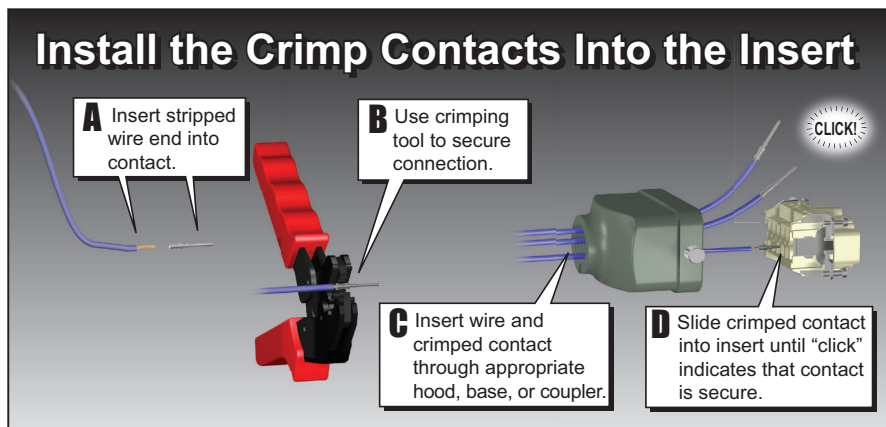
**WARNING - ACCORDING TO EN 61984, CONNECTORS SHOULD NOT BE COUPLED AND DECOUPLED UNDER ELECTRICAL LOAD.**

## Crimp Contact to Insert Installation

Proper installation of the crimp contacts is important for a good electrical and mechanical connection. The following steps will ensure correct installation.

### Step 1: Select the Crimp Contacts

Select a crimp contact based on the rating of the Insert you are using; 10 or 16 amps; the gender (male or female), and the gauge of wire being used.

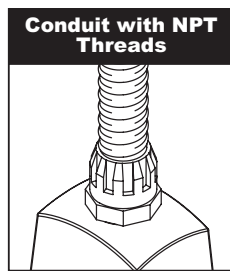


### Step 2: Install the Insert Into the Housing

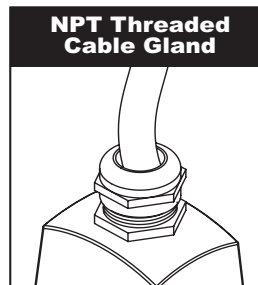
Now that the crimp contacts are installed, the Insert can be placed into the housing by aligning the corner installation screws of the insert with the screw holes located in the corners of the housing. Tighten the screws according to the tightening torques listed in the Insert Screw Specifications table in this document.

## Wire Entry Connection

METEcon provides openings for easy conduit and cable terminations. The openings come in NPT threaded sizes 3/8in, 1/2in, or 3/4in.



Secures NPT threaded flexible conduit directly to the housing.

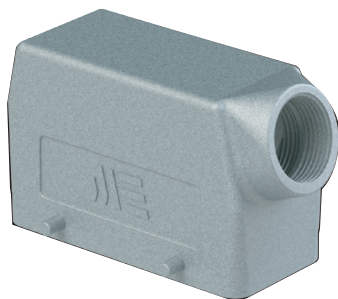


For securing a cable to the housing, use an NPT threaded cable gland.

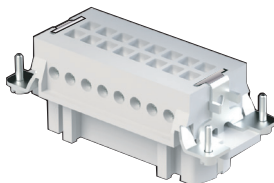
# Multi-Wire Connectors

## Screw Terminal Basic Assembly

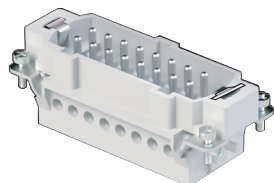
Housing  
(Size 16B Hood)



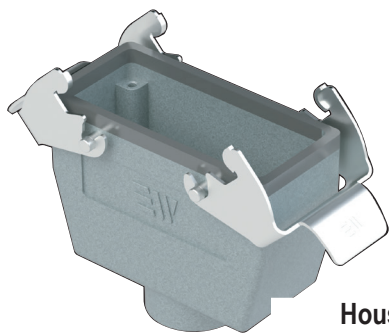
Strain Relief  
(Cable Gland  
Optional)



Female Insert  
(Screw Type)



Male Insert  
(Screw Type)



Housing  
(Size 16B Coupler)

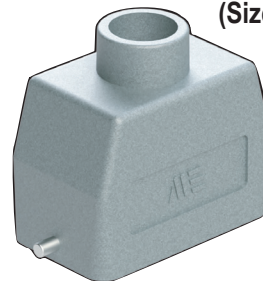


Strain Relief  
(Cable Gland  
Optional)

## Crimp Contact Basic Assembly



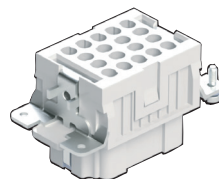
Strain Relief  
(Cable Gland  
Optional)



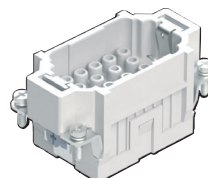
Housing  
(Size 10B Hood)



Crimp Contacts  
(Female Contact)



Female Insert  
(Crimp Type)

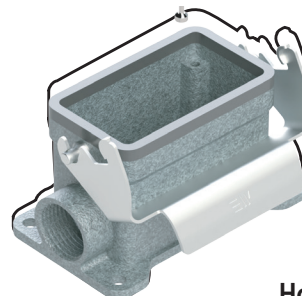


Male Insert  
(Crimp Type)



Crimp Contacts  
(Male Contact)

Strain Relief  
(Cable Gland  
Optional)



Housing  
(Size 10B Surface  
Mount)

## Standards

The Inserts are designed and manufactured to conform with, IEC 61984, VDE 0627, and UL 1977/CSA C22.2 182.3 standards. They are certified and labeled with the cULus and CE marks. The connectors are therefore in conformance with both European/International and American systems. This permits them to be used in a wider range of applications worldwide.

• EN 61984	Connectors safety requirements and tests
• VDE 0627	Connectors (DIN VDE 0627)
• EN 60664-1	Insulation coordination for equipment within low-voltage systems
• VDE 0110	Table 4 concerning clearance and creepage distances
• EN 60512	Connectors for electronic equipment, tests, and measurements
• UL 1977	Component connectors for use in data, signal, control, and power applications
• CSA.C22.2 No. 182.3	Special use attachment, plugs, receptacles, and connectors
• EN 60529	Degree of protection provided by enclosures (IP degree)
• EN 60423	Conduits for electrical purposes. Outside diameters of conduits for electrical installations and thread for conduits and fittings

## Directives and Declarations

### **LVD Directive**

Directive 2006/95/EC of the European Parliament and of the council of 12 December 2006 on the harmonization of the laws of Members States relating to electrical equipment designed for use within certain voltage limits.

### **RoHS Directive**

Directive 2011/65/EU and amendment (EU) 2015/863 restricts the use of the following ten substances:

Lead (Pb)

Mercury (Hg)

Cadmium (Cd)

Hexavalent chromium (Cr6+)

Polybrominated biphenyls (PBB)

Polybrominated diphenyl ether (PBDE)

Bis(2-ethylhexyl) phthalate (DEHP)

Butyl benzyl phthalate (BBP)

Dibutyl phthalate (DBP)

Diisobutyl phthalate (DIBP)

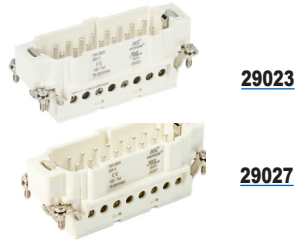
Regulation (EC) No 1907/2006 of the European Parliament and of the Council of 18 December 2006 concerning the Registration Evaluation, Authorization and Restriction of Chemicals (REACH), establishing a European Chemicals Agency, amending Directive 1999/45/EC and repealing Council Regulation (EEC) No 793/93 and Commission Regulation (EC) No 1488/94 as well as Council Directive 76/769/EEC and Commission Directives 91/155/EEC, 93/67/EEC, 93/105/EEC and 2000/21/EC.



# Multi-Wire Connectors Size 32B

## Size 32B Inserts

### Male Inserts



### Female Inserts



32B Inserts							
<b>Insert Type</b>	<b>No. of Poles</b>	6+PE		16+PE		16+PE	
	<b>Rated Voltage</b>	600 VAC/VDC		600 VAC/VDC		600 VAC/VDC	
	<b>Max. Rated Current</b>	35 amp		16 amp		16 amp	
	<b>Termination Type</b>	Screw terminals		Screw terminals		Crimped contact	
	<b>Pole Numbering Sequence</b>	Numbered 1 to 6	Numbered 7 to 12	Numbered 1 to 16	Numbered 17 to 32	Numbered 1 to 16	Numbered 17 to 32
<b>Male</b>	<b>Part Number</b>	<a href="#"><u>29125</u></a>	<a href="#"><u>29129</u></a>	<a href="#"><u>29023</u></a>	<a href="#"><u>29027</u></a>	<a href="#"><u>290233016</u></a>	<a href="#"><u>290273032</u></a>
	<b>Price</b>	\$19.50	\$20.00	\$11.50	\$12.50	\$9.00	\$8.00
	<b>Drawing Link</b>	<a href="#"><u>PDF</u></a>	<a href="#"><u>PDF</u></a>	<a href="#"><u>PDF</u></a>	<a href="#"><u>PDF</u></a>	<a href="#"><u>PDF</u></a>	<a href="#"><u>PDF</u></a>
	<b>Crimp Contact Size*</b>	—		—		16 amp male contacts METE 14106xxx	
	<b>Weight g [oz]</b>	80.74 [2.85]	80.00 [2.82]	92.99 [3.28]	91.00 [3.21]	91.00 [3.21]	91.00 [3.21]
<b>Female</b>	<b>Part Number</b>	<a href="#"><u>29124</u></a>	<a href="#"><u>29128</u></a>	<a href="#"><u>29022</u></a>	<a href="#"><u>29026</u></a>	<a href="#"><u>290223016</u></a>	<a href="#"><u>290263032</u></a>
	<b>Price</b>	\$20.50	\$20.00	\$11.50	\$12.50	\$9.00	\$9.00
	<b>Drawing Link</b>	<a href="#"><u>PDF</u></a>	<a href="#"><u>PDF</u></a>	<a href="#"><u>PDF</u></a>	<a href="#"><u>PDF</u></a>	<a href="#"><u>PDF</u></a>	<a href="#"><u>PDF</u></a>
	<b>Crimp Contact Size*</b>	—		—		16 amp female contacts METE 14105xxx	
	<b>Weight g [oz]</b>	86.68 [3.06]	80.00 [2.82]	99.88 [3.52]	98.00 [3.46]	98.00 [3.46]	98.00 [3.46]

Note: Each Insert only takes up half of the 32B housings. 2 inserts are required per housing to fill the 32B housings.

Crimp Contacts must be purchased separately. The xxx represents wire AWG. See Accessories at the end of this section for complete part numbers.

Continued on the following page.

## Size 32B Inserts

### Male Inserts

**290233032****290233072****290273064****290273144**

### Female Inserts

**290223032****290223072****290263064****290263144**

32B Inserts					
<b>Insert Type</b>	<b>No. of Poles</b>	32+PE		72+PE	
	<b>Rated Voltage</b>	600 VAC/VDC		600 VAC/VDC	
	<b>Max. Rated Current</b>	16 amp		10 amp	
	<b>Termination Type</b>	Crimped contact		Crimped contact	
	<b>Pole Numbering Sequence</b>	Numbered 1 to 32	Numbered 33 to 64	Numbered 1 to 72	Numbered 73 to 144
<b>Male</b>	<b>Part Number</b>	<b><u>290233032</u></b>	<b><u>290273064</u></b>	<b><u>290233072</u></b>	<b><u>290273144</u></b>
	<b>Price</b>	\$18.00	\$20.00	\$24.50:	\$26.50
	<b>Drawing Link</b>	<a href="#">PDF</a>	<a href="#">PDF</a>	<a href="#">PDF</a>	<a href="#">PDF</a>
	<b>Crimp Contact Size*</b>	16 amp male contacts METE 14106xxx		10 amp male contacts METE 14104xxx	
	<b>Weight g [oz]</b>	58.51 [2.06]	59.60 [2.10]	56.88 [2.01]	57.60 [2.03]
<b>Female</b>	<b>Part Number</b>	<b><u>290223032</u></b>	<b><u>290263064</u></b>	<b><u>290223072</u></b>	<b><u>290263144</u></b>
	<b>Price</b>	\$19.00	\$20.00	\$25.00	\$26.50
	<b>Drawing Link</b>	<a href="#">PDF</a>	<a href="#">PDF</a>	<a href="#">PDF</a>	<a href="#">PDF</a>
	<b>Crimp Contact Size*</b>	16 amp female contacts METE 14105xxx		10 amp female contacts METE 14103xxx	
	<b>Weight g [oz]</b>	68.63 [2.42]	69.80 [2.46]	61.10 [2.16]	62.00 [2.19]

Note: Each Insert only takes up half of the 32B housings. 2 inserts are required per housing to fill the 32B housings.\*

Crimp Contacts must be purchased separately. The xxx represents wire AWG. See Accessories at the end of this section for complete part numbers.

# Multi-Wire Connectors Size 32B

## Size 32B Double-Lever Housings

**290612805****290822805S****29046S**

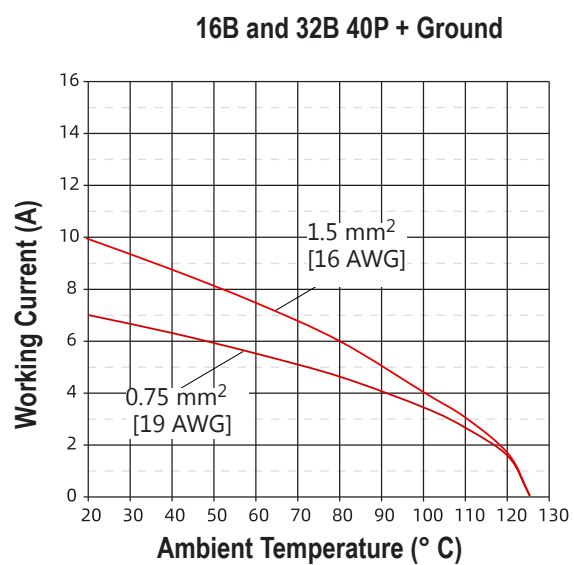
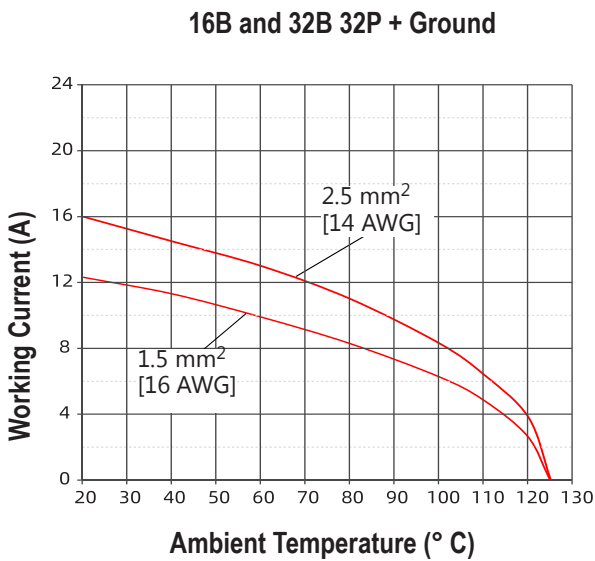
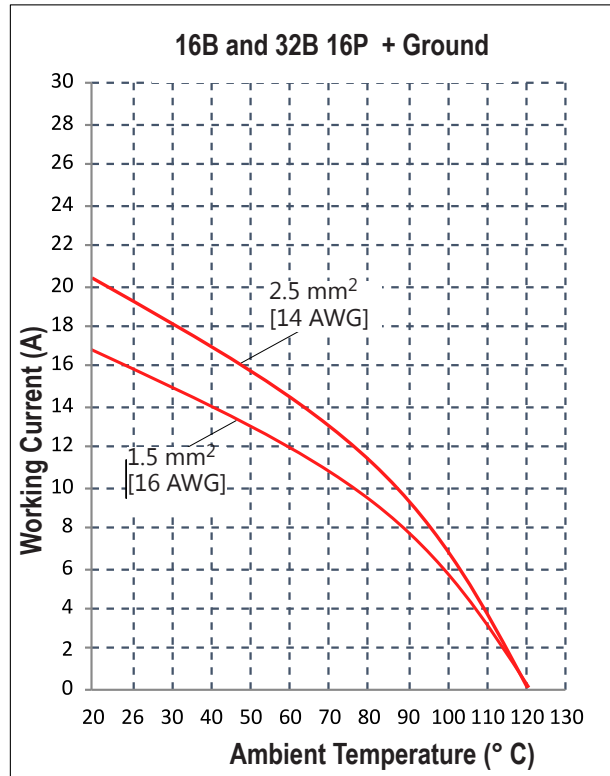
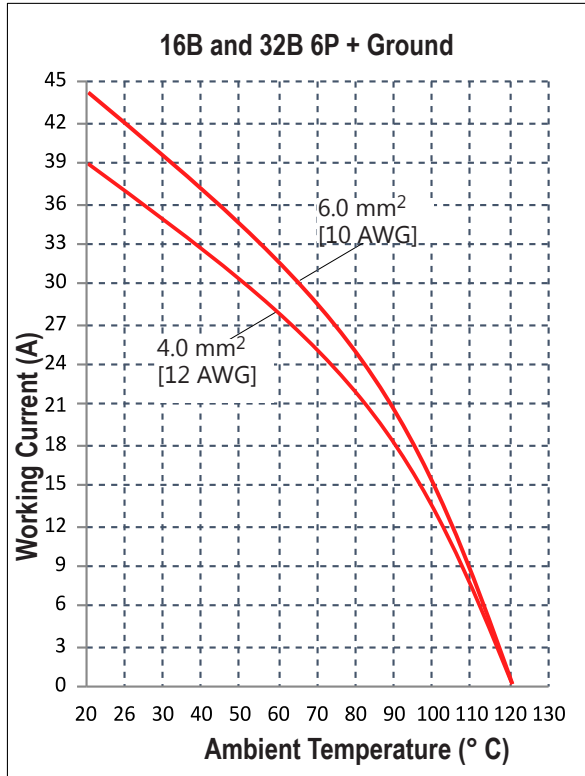
32B Double-Lever/4-Peg Housing								
Housing Component	Threaded Opening	Part Number	Price	Material	Works With	Color	Weight g [oz]	Drawing Link
<b>Hood, 4-Peg, Side Entry</b>	(1) 1 NPT threaded hole	<b><u>290612805</u></b>	\$22.00	Heavy-duty die cast aluminum	METE size 32B double lever connector housings	Gray	266.00 [9.38]	<a href="#">PDF</a>
<b>Surface Mount, Double-Lever, Side Entry</b>	(2) 1 NPT threaded hole	<b><u>290822805S</u></b>	\$48.00		METE size 32B 4-peg connector housings		595.00 [20.99]	<a href="#">PDF</a>
<b>Bulkhead Base, Double-Lever</b>	—	<b><u>29046S</u></b>	\$19.00				159.00 [5.60]	<a href="#">PDF</a>

## Size 32B Specifications

Specifications								
Connector Size		32B						
Inserts	Number of Poles		6+PE	16+PE	16+PE	32+PE	72+PE	
	UL/CSA Rated Voltage*		600 VAC/VDC					
	Maximum Rated Current		35 amp	16 amp	16 amp	16 amp	10 amp	
	EN 61984 (2001-11) Pollution Degree 3	Rated Voltage AC/DC		400/690V	400V		500V	250V
		Impulse Withstand Voltage		6 kV				4 kV
	Continuous Current Carrying Capacity		Refer to Electrical Engineering section charts					
	Insulation Resistance		≥10 <sup>10</sup> Ω					
	Housing Material		Polycarbonate					
	Temperature Range		-40 to +125 °C [-40 to +257 °F]					
	Flammability		UL 94 V-0					
	Degree Protection	With Housing		IP65				
		Without Housing		IP20				
	Mechanical Working Life		≥ 500 Cycles					
	Contact Material		Brass (silver-plated)					
	Minimum Recommended Load (voltage & current)		5V / 5 mA AC/DC					
	Contact Resistance		≤1 mΩ				≤3 mΩ	
	Screw Terminal Wire Size	mm <sup>2</sup>		1.5–6	1.0–2.5	—		
		AWG		16–10	18–14	—		
	Screw Terminal Tightening Test Torque N·m [in·lb]		1.2 [10.6]	0.5 [4.4]	—			
	Screw Terminal Stripping Length (mm)		7			—		
Crimp Terminal Wire Size	mm <sup>2</sup>		—	0.5–4.0	0.37–4.0	0.14–2.5		
	AWG		—	20–12	26–12	26–14		
Crimp Terminal Stripping Length (mm)		—	7.5	7.5	0.14–1.5mm <sup>2</sup> : 8mm 2.5 mm <sup>2</sup> : 6mm			
Aluminum Hoods/Surface Mount/Bulkhead	Material		Die cast aluminum alloy					
	Locking Element		Steel plate					
	Housings Seal		Nitrile butadiene rubber (NBR)					
	Degree of Protection Acc. to EN 60529 (coupled)		IP65					
	Temperature Range		-40 to +125 °C [-40 to +257 °F]					
	Thread		NPT ASME B1.20.1					

\* Connectors should not be coupled and decoupled under electrical load.

## Electrical Engineering Data - Load Diagrams

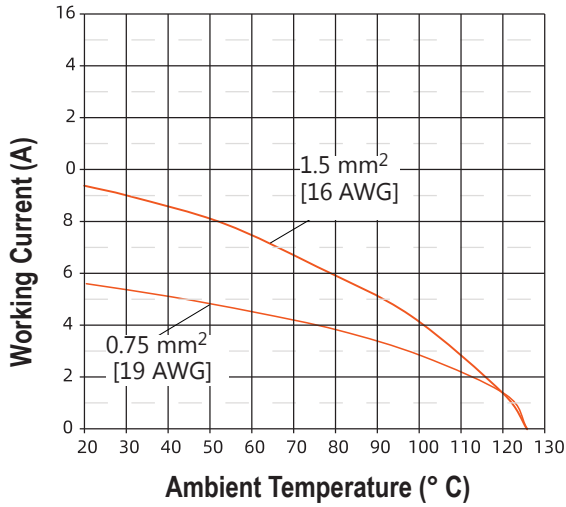




# Multi-Wire Connectors

## Electrical Engineering Data - Load Diagrams

16B and 32B 72P + Ground





# Multi-Wire Connectors Accessories

## Crimp Contacts - 10 and 16 Amp

Crimp contacts are made of hard silver-plated alloy. Wires to be connected must be carefully matched with the correct wire size of crimp contacts. Crimp contacts should be installed using a crimping tool.

10 Amp Crimp Contacts - 100/Pack							
Male	Price	Weight g [oz]	Female	Price	Weight g [oz]	Wire Gauge mm <sup>2</sup> [AWG]	Stripping Length
<a href="#">14104164</a>	\$55.00	71.67 [2.53]	<a href="#">14103164</a>	\$62.00	68.95 [2.43]	0.14-0.37 [26-22]	8mm [0.31in]
<a href="#">14104264</a>	\$55.00	70.31 [2.48]	<a href="#">14103264</a>	\$62.00	68.49 [2.42]	0.5 [20]	
<a href="#">14104364</a>	\$55.00	67.59 [2.38]	<a href="#">14103364</a>	\$62.00	67.13 [2.37]	0.75 [18]	
<a href="#">14104564</a>	\$55.00	66.23 [2.34]	<a href="#">14103564</a>	\$62.00	66.68 [2.35]	1.5 [16]	
<a href="#">14104664</a>	\$55.00	61.60 [2.17]	<a href="#">14103664</a>	\$62.00	62.60 [2.21]	2.5 [14]	



Male Crimp Contact



Female Crimp Contact



Male Crimp Contact



Female Crimp Contact

16 Amp Crimp Contacts - 100/Pack							
Male	Price	Weight g [oz]	Female	Price	Weight g [oz]	Wire Gauge mm <sup>2</sup> [AWG]	Stripping Length
<a href="#">14106164</a>	\$47.00	120.43 [4.25]	<a href="#">14105164</a>	\$53.00	156.95 [5.54]	0.14-0.37 [26-22]	7.5mm [0.29in]
<a href="#">14106264</a>	\$47.00	135.17 [4.77]	<a href="#">14105264</a>	\$53.00	162.84 [5.74]	0.5 [20]	
<a href="#">14106364</a>	\$47.00	131.09 [4.62]	<a href="#">14105364</a>	\$53.00	146.51 [5.17]	0.75 [18]	
<a href="#">14106564</a>	\$47.00	131.32 [4.63]	<a href="#">14105564</a>	\$53.00	152.86 [5.39]	1.5 [16]	
<a href="#">14106664</a>	\$47.00	139.71 [4.93]	<a href="#">14105664</a>	\$53.00	166.47 [5.87]	2.5 [14]	
<a href="#">14106864</a>	\$47.00	136.53 [4.82]	<a href="#">14105864</a>	\$53.00	154.68 [5.46]	4.0 [12]	

Crimp Contact Tools				
Part Number	Price	Qty	Description	Weight [lb]
<a href="#">ZP-MC-CT1</a>	\$912.00	1	Crimping tool w/die set and locator	1.593
<a href="#">ZP-MC-CT2</a>	\$137.00		Crimping tool w/die set only, no locator	0.814
<a href="#">ZP-MC-RT1</a>	\$136.00		Removal tool for 10A contacts	0.081
<a href="#">ZP-MC-RT2</a>	\$124.00		Removal tool for 16A contacts	0.086



[ZP-MC-CT1](#)



[ZP-MC-CT2](#)



[ZP-MC-RT1](#)



[ZP-MC-RT2](#)